

F.A.U. RTE.	SECTION	COUNTY	TOTAL SHEETS	SHEET NO.
2561	11-00237-12-SP	DUPAGE/COOK	24	1
ILLINOIS CONTRACT NO. 63821				

**STATE OF ILLINOIS**  
**DEPARTMENT OF TRANSPORTATION**  
**DIVISION OF HIGHWAYS**

**PLANS FOR PROPOSED  
FEDERAL AID HIGHWAY**  
**DISTRICT 1**

**F.A.U. ROUTE 2561 (GARY AVENUE - C.H. 23)  
AT TRAVIS PARKWAY  
LEAD AGENCY DUPAGE COUNTY  
SAFETY IMPROVEMENTS  
SECTION: 11-00237-12-SP  
PROJECT NO. HSIP - 0043 (029)  
COOK AND DUPAGE COUNTIES  
C-91-540-12**

**INDEX OF SHEETS**

SHEET NO.	DESCRIPTION
1	COVER SHEET
2	GENERAL NOTES
3	SUMMARY OF QUANTITIES
4 - 5	TRAFFIC SIGNAL PLANS
6	CABLE PLANS, PHASING, AND SCHEDULE OF QUANTITIES
7	LIGHTING NOTES AND LEGEND
8 - 9	DUPAGE COUNTY LIGHTING PLANS
10	IDOT LIGHTING PLANS
11	DUPAGE COUNTY WIRING DIAGRAM
12	IDOT WIRING DIAGRAM
13 - 16	LIGHTING DETAILS
19 - 23	DISTRICT ONE STANDARD TRAFFIC SIGNAL DESIGN DETAILS
24	DUPAGE COUNTY STANDARD DETAILS

**HIGHWAY STANDARDS**

000001-06	001006	424001-07	424021-01
606306-03	701006-04	701101-03	701301-04
701421-05	701501-06	701601-08	701701-08
701801-05	701901-02	720001-01	720006-03
814001-02	814006-02	857001-01	862001-01
873001-02	877001-05	878001-09	880001-01
880006-01	886001-01		

**IDOT DISTRICT ONE DETAILS**

TS-05	BE-220	BE-410	BE-701
-------	--------	--------	--------

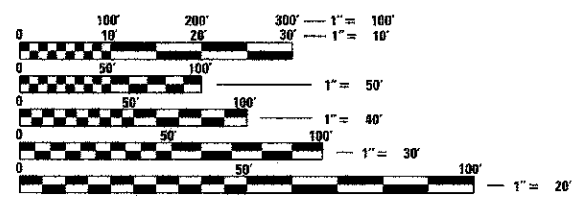
**DUPAGE COUNTY STANDARD**

**DETAIL: TRAFFIC SIGNAL CABINET - TYPE IV (DUPAGE)**

NOTE: STANDARD DRAWINGS REQUIRED (CIRCLED).

THIS PROJECT IS LOCATED IN THE CITY OF ROSELLE.

	48 HOURS BEFORE CONSTRUCTION	
	SECTION(S): N. 1/2 SEC. 5	S. 1/2 SEC. 32
	TOWNSHIP: 40 NORTH	41 NORTH
	RANGE: 10 EAST OF 3RD P.M.	



FULL SIZE PLANS HAVE BEEN PREPARED USING STANDARD ENGINEERING SCALES. REDUCED SIZED PLANS WILL NOT CONFORM TO STANDARD SCALES. IN MAKING MEASUREMENTS ON REDUCED PLANS, THE ABOVE SCALES MAY BE USED.

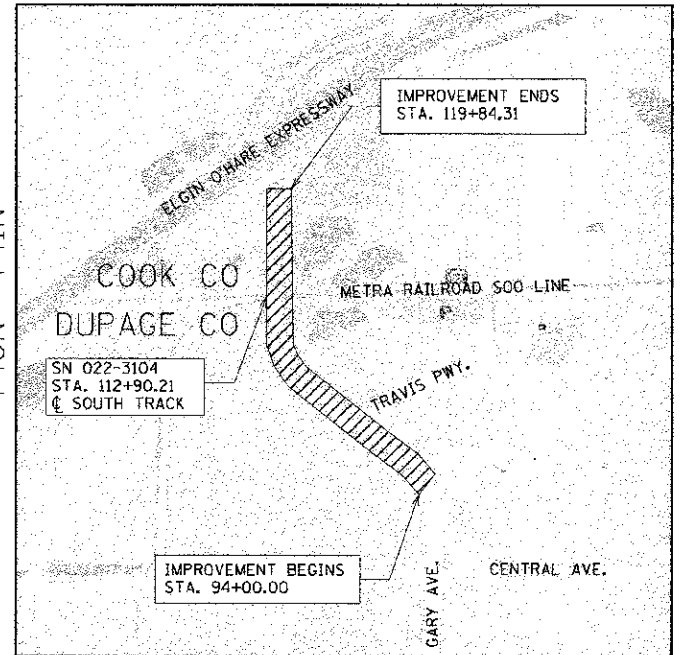
J.U.L.I.E.  
JOINT UTILITY LOCATION INFORMATION FOR EXCAVATION  
1-800-892-0123 OR 811

**PROJECT ENGINEER: STEPHEN ZULKOWSKI**  
**PROJECT MANAGER: JOHN CLARK**

**CONTRACT NO. 63821**



R10E, 3RD PM



BLOOMINGDALE TOWNSHIP  
LOCATION MAP

LOCATION MAP SCALE: N.T.S.

GROSS LENGTH OF IMPROVEMENT: 2584.31 LIN. FT. = 0.49 MILES  
OMISSIONS: NONE  
NET LENGTH OF IMPROVEMENT: 2584.31 LIN. FT. = 0.49 MILES

DESIGN DESIGNATION:  
MAJOR COLLECTOR/  
MINOR ARTERIAL

POSTED SPEED LIMIT:  
45 MPH

TRAFFIC VOLUME:  
18,100 ADT



*John A. Clark*  
JOHN A. CLARK, P.E.  
NO. 062-055684  
EXP. DATE: 11/30/2013  
SHEETS 1 - 6  
19 - 24



*Syed Ali*  
SYED ALI, P.E.  
NO. 062-044196  
EXP. DATE: 11/30/2013  
SHEETS 7 - 18

**STATE OF ILLINOIS**  
DEPARTMENT OF TRANSPORTATION  
DIVISION OF HIGHWAYS

APPROVED *Christopher Snyder*  
April 5<sup>th</sup> 2013  
COUNTY ENGINEER, DUPAGE COUNTY

PASSED April 9, 2013  
*C. Holt* c.j. Holt  
DISTRICT ONE ENGINEER OF LOCAL ROADS & STREETS

RELEASING FOR BID  
BASED ON LIMITED  
REVIEW April 10, 2013  
*John Fortman*  
DEPUTY DIRECTOR OF HIGHWAYS, REGION ONE ENGINEER

**STV Incorporated**  
engineers/architects/scientists/construction managers  
200 W. Monroe - Suite 1650  
Chicago, Illinois 60606  
(312) 553-0655  
FAX: (312) 553-0661

**PRINTED BY THE AUTHORITY  
OF THE STATE OF ILLINOIS**

PROGRAM AND OFFICE ENGINEER CHARLES F. RIDDLE, P.E. (847)-705-4406 SCHAUMBURG, IL