

**STATE OF ILLINOIS
DEPARTMENT OF TRANSPORTATION
DIVISION OF HIGHWAYS**

**PLANS FOR PROPOSED
FEDERAL AID HIGHWAY
FAU ROUTE 2615 (MAIN STREET)
FAU 1504 (55TH STREET) TO FAU 1487 (MAPLE AVENUE)
RESURFACING
SECTION: 12-00106-00-RS
PROJECT: M-4003 (130)
JOB: C-91-138-13
VILLAGE OF DOWNERS GROVE
DU PAGE COUNTY**

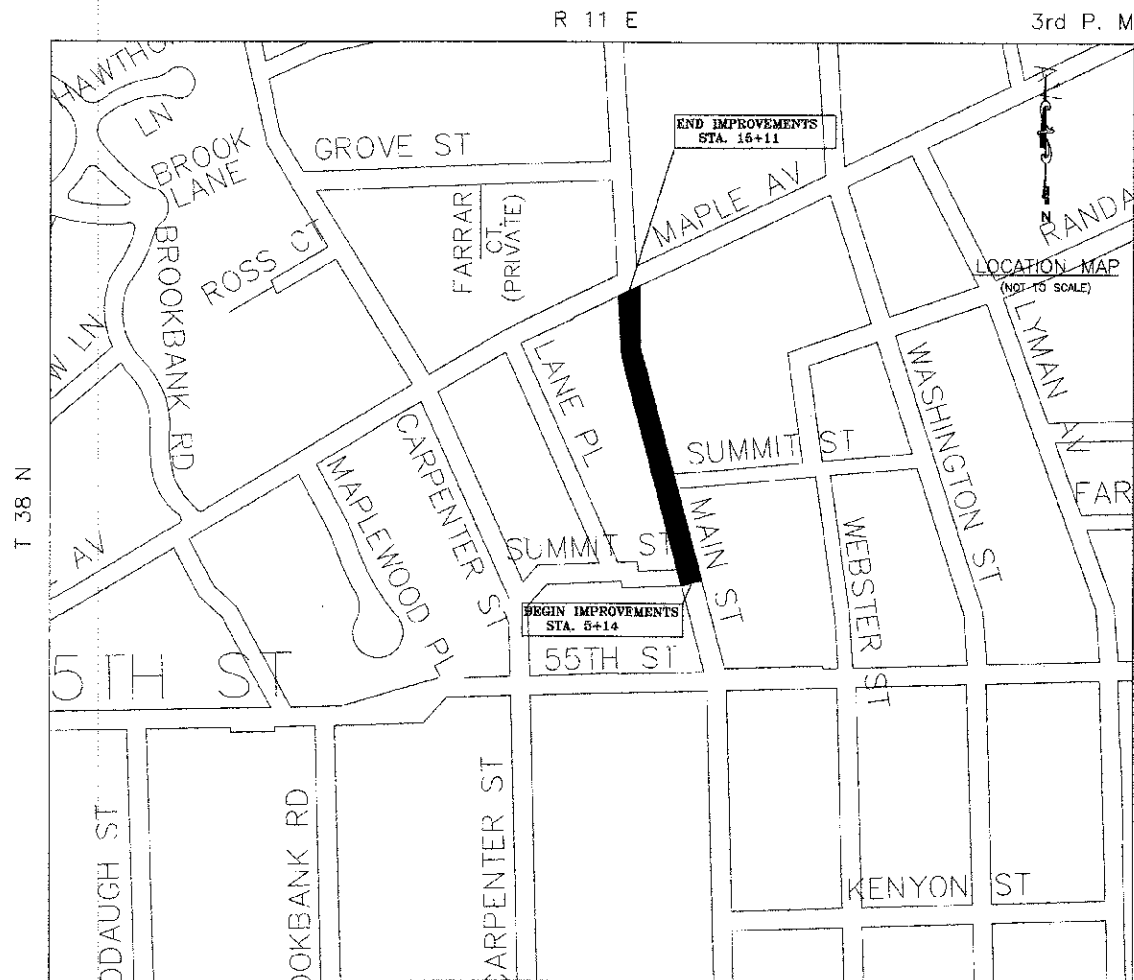
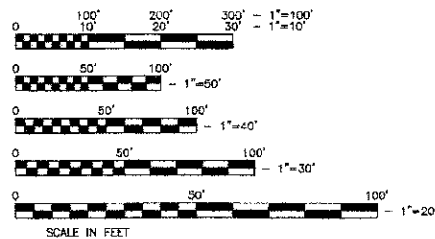
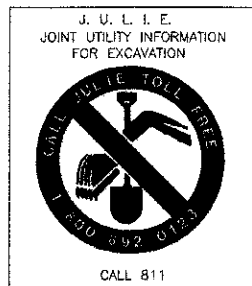
F.A.D. NO.	SECTION	COUNTY	TOTAL SHEETS	SHEET NO.
2615	12-00106-00-RS	DU PAGE	14	1
FED. ROAD DIST. NO. 1		ILLINOIS	FED. AID PROJECT	
CONTRACT NO. 63822				

INDEX OF SHEETS

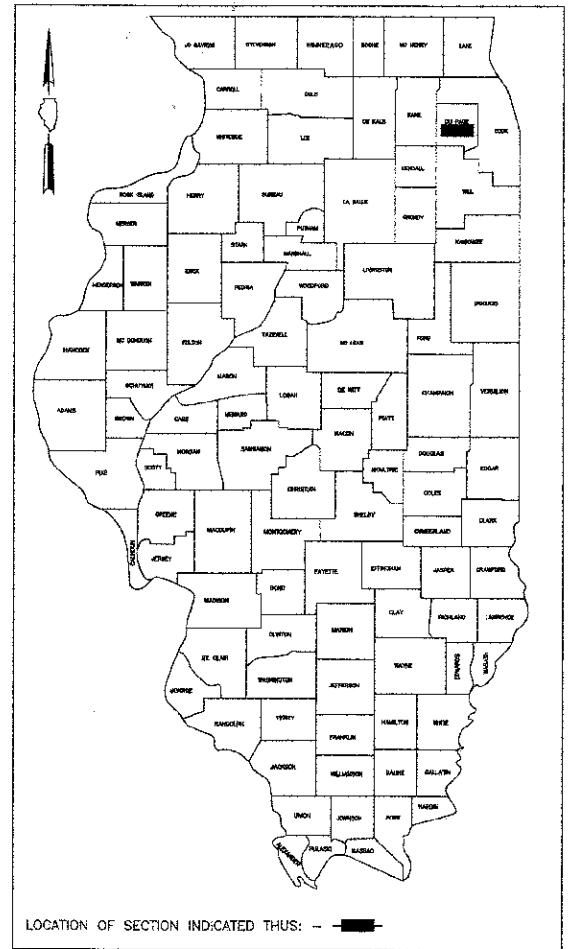
SHEET NO.	DESCRIPTION
1	COVER SHEET & LOCATION MAP
2	GENERAL NOTES & IDOT STANDARDS
3	SUMMARY OF QUANTITIES
4	TYPICAL SECTIONS
5	PLAN SHEET (STA 1+91 TO STA 7+00)
6	PLAN SHEET (STA 7+00 TO STA 13+00)
7	PLAN SHEET (STA 13+00 TO STA 18+41)
8	VILLAGE DETAILS
9	BD-32 BUTT JOINT AND HMA TAPER DETAILS
10	TC-13 IDOT DISTRICT ONE TYPICAL PAVEMENT MARKINGS DETAIL
11	BD-08 FRAMES AND LIDS ADJUSTMENT WITH MILLING
12	RD-22 PAVEMENT PATCHING FOR HMA SURFACED PAVEMENT
13	TC-10 TRAFFIC CONTROL AND PROTECTION FOR SIDE ROADS, INTERSECTIONS AND DRIVEWAYS
14	TC-16 PAVEMENT MARKING LETTERS & SYMBOLS FOR TRAFFIC STAGING

PROJECT LOCATED IN THE
VILLAGE OF DOWNERS GROVE

MAIN STREET DESIGN DESIGNATION
MINOR ARTERIAL
DESIGN SPEED: 35 MPH
ADT: 16,000



PROJECT LENGTH (GROSS AND NET)
997 FT = 0.19 MILE



STATE OF ILLINOIS
DEPARTMENT OF TRANSPORTATION
DIVISION OF HIGHWAYS

APPROVED Nancy Nelson 2013
DIRECTOR OF PUBLIC WORKS, VILLAGE OF DOWNERS GROVE

PASSED April 11 2013
C. Holt C. Hoer
DIVISION 1 ENGINEER OF LOCAL ROADS AND STREETS

RELEASING FOR BID
BASED ON LIMITED
REVIEW April 12 2013
John Fortson
DEPUTY DIRECTOR OF HIGHWAYS, REGION ONE ENGINEER



Andrew J. Sikich, P.E.
#062-051270
My License Expires 11/30/13

PRINTED BY THE AUTHORITY
OF THE STATE OF ILLINOIS

PROGRAM AND OFFICE ENGINEER: CHARLES F. RIDDLE, P. E. 847-705-4406 SCHAUMBURG, IL

FULL SIZE PLANS HAVE BEEN PREPARED USING STANDARD ENGINEERING SCALES. REDUCED SIZE PLANS WILL NOT CONFORM TO STANDARD SCALES. IN MAKING MEASUREMENTS ON REDUCED PLANS, THE ABOVE SCALES CAN BE USED

Contract No. 63822