

F.A.P. RTE.	SECTION	COUNTY	TOTAL SHEETS	SHEET NO.
326	11-00001-00-CH	KANE	55	1
		ILLINOIS	CONTRACT NO. 63829	

FOR INDEX OF SHEETS, SEE SHEET NO. 2

HIGHWAY CLASSIFICATION

OTHER PRINCIPAL ARTERIAL

ILLINOIS ROUTE 47 TRAFFIC DATA

2010 ADT = 11,640

2013 ADT = 11,940

POSTED SPEED = 55 MPH

DESIGN SPEED = 60 MPH

PROJECT LOCATED IN UNINCORPORATED SUGAR GROVE

STATE OF ILLINOIS
DEPARTMENT OF TRANSPORTATION
DIVISION OF HIGHWAYS
PROPOSED PLANS
FOR FEDERAL AID HIGHWAY
FAP 326 (ILLINOIS ROUTE 47)
AT WAUBONSEE DRIVE
TRAFFIC SIGNAL INSTALLATION, LEFT
TURN LANE ADDITIONS, REALIGNMENT
SECTION 11-00001-00-CH
PROJECT NO. HSIP-4003(011)
KANE COUNTY

C-91-372-12

R 7 E

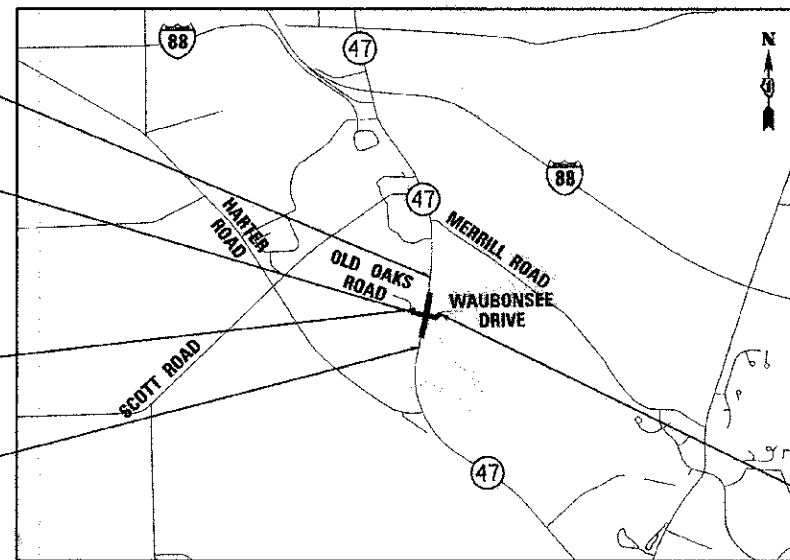
3RD PM

PROJECT ENDS
STA. 116 + 70

☐ INTERSECTION
STA. 110 + 22.43 IL RT 47 =
STA. 15 + 53.82 WAUBONSEE DR =
STA. 15 + 53.82 OLD OAKS RD

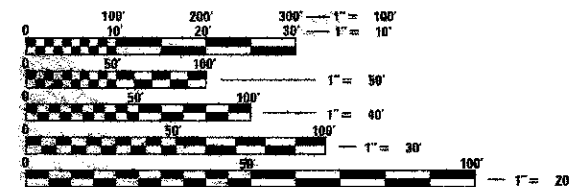
PROJECT BEGINS
STA. 11 + 17.65

PROJECT BEGINS
STA. 104 + 30



SUGAR GROVE TOWNSHIP
LOCATION MAP

GROSS AND NET LENGTH = 1,240 FEET = 0.24 MILE

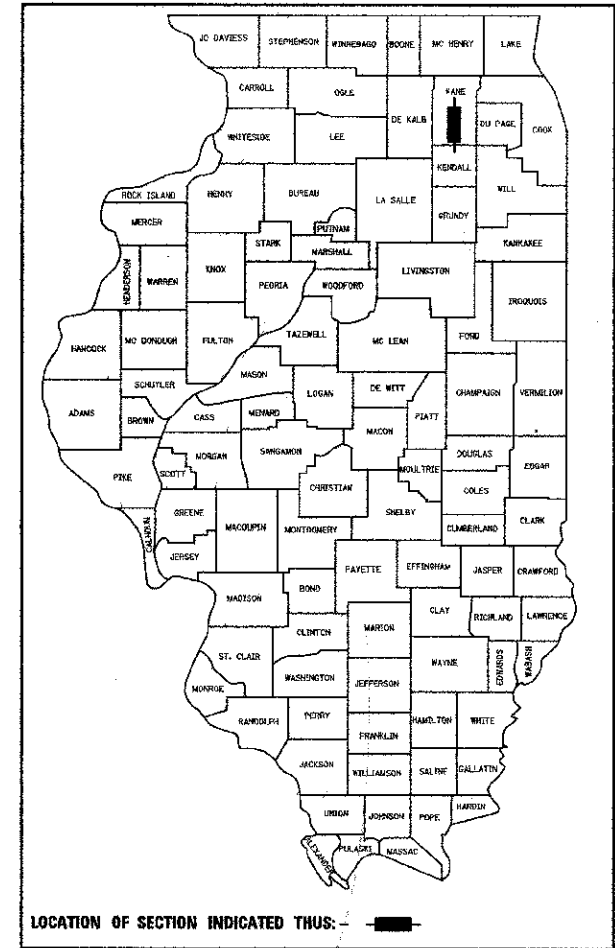


FULL SIZE PLANS HAVE BEEN PREPARED USING STANDARD ENGINEERING SCALES. REDUCED SIZED PLANS WILL NOT CONFORM TO STANDARD SCALES. IN MAKING MEASUREMENTS ON REDUCED PLANS, THE ABOVE SCALES MAY BE USED.

J.U.L.I.E.
JOINT UTILITY LOCATION INFORMATION FOR EXCAVATION
1-800-892-0123
OR 811

PLANS PREPARED BY:
PATRICK ENGINEERING, INC.

CONTRACT NO. 63829



STATE OF ILLINOIS
DEPARTMENT OF TRANSPORTATION
DIVISION OF HIGHWAYS

APPROVED March 25, 2013 2013
David Quillen, Exec. V.P.
WAUBONSEE COMMUNITY COLLEGE

PASSED APRIL 15, 2013 2013
CHUCK C. HOLT
DISTRICT 1 ENGINEER OF LOCAL ROADS & STREETS

RELEASING FOR BID
BASED ON LIMITED
REVIEW: April 15 2013
John F. ...
DEPUTY DIRECTOR OF HIGHWAYS, REGION 1 ENGINEER

PRINTED BY THE AUTHORITY
OF THE STATE OF ILLINOIS

<p>PATRICK ENGINEERING, INC.</p> <p>JOHN A. HEIM, P.E. NO. 062-058117 EXP. DATE: 11/30/13 APPLY TO DRAWINGS: 1-14; 17-22; 36-55</p>	<p>PATRICK ENGINEERING, INC.</p> <p>ERIC Y. CHOW, P.E. NO. 062-060334 EXP. DATE: 11/30/13 APPLY TO DRAWINGS: 15-16; 23-25</p>	<p>PATRICK ENGINEERING, INC.</p> <p>TIMOTHY W. REESMAN, P.E. NO. 062-061731 EXP. DATE: 11/30/13 APPLY TO DRAWINGS: 27-35</p>
---	--	---

PROGRAM AND OFFICE ENGINEER: CHARLES F. RIDDLE, P.E. (847) 705-4406 SCHAUMBURG, IL