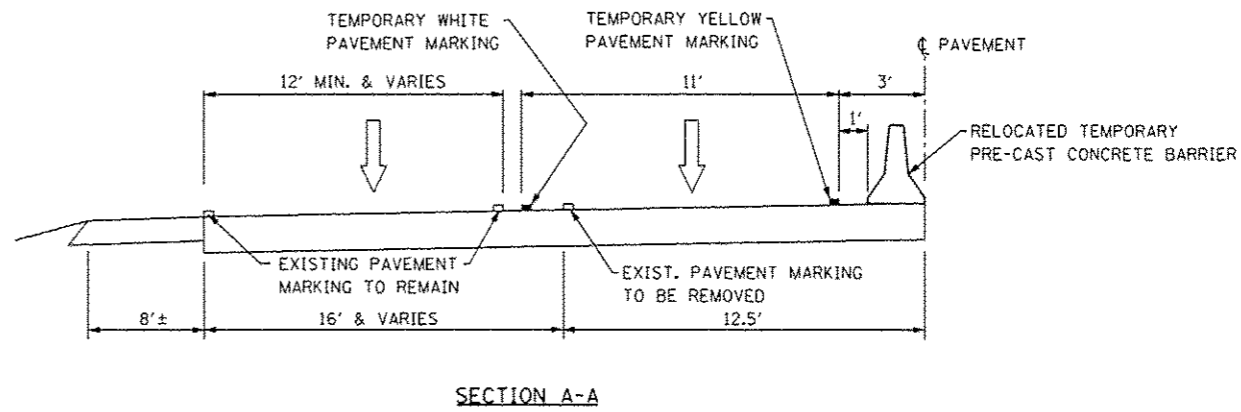
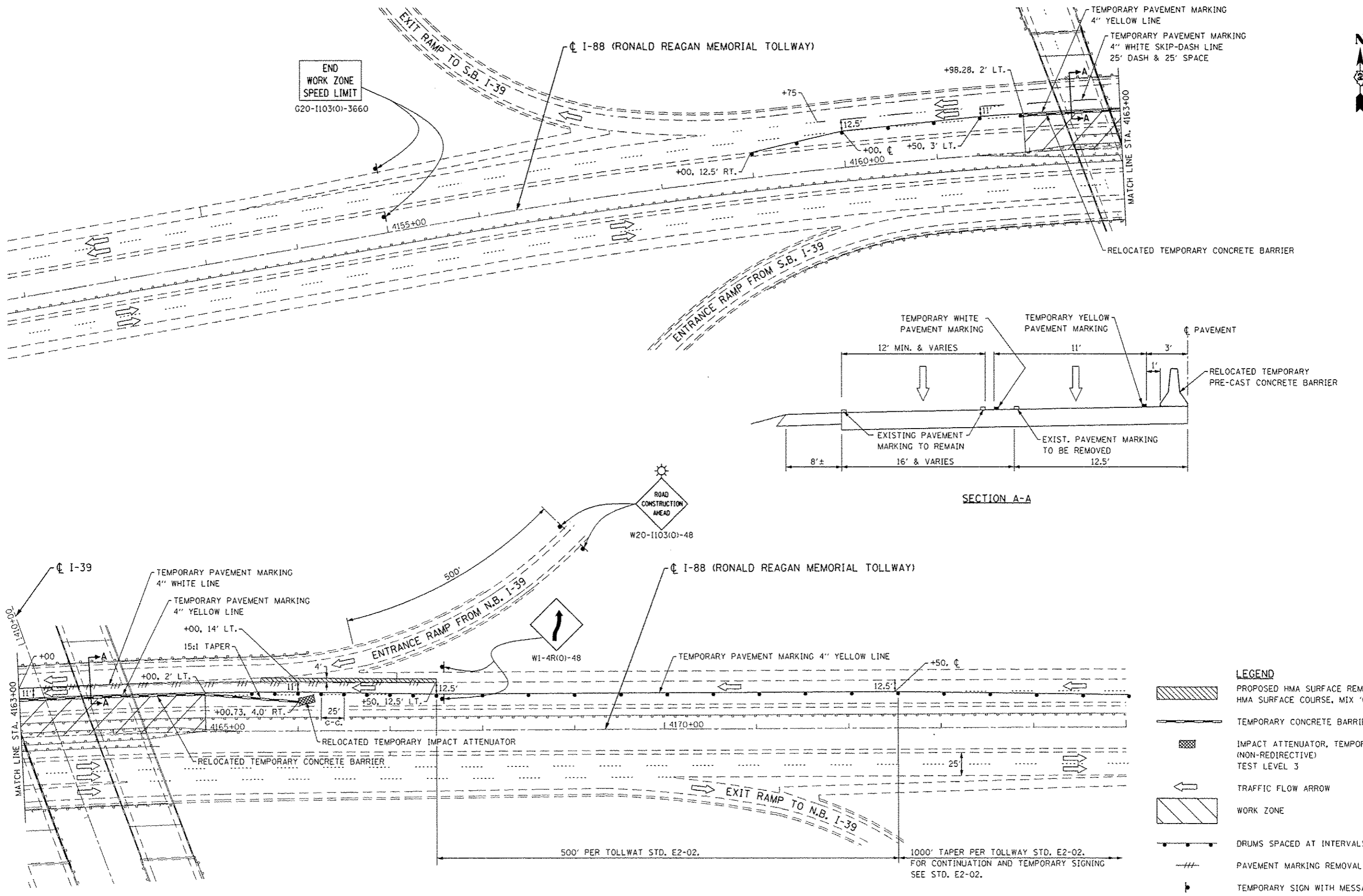


DATE	
BY	
REVISIONS	
1	
2	
3	
4	
5	
6	
7	
8	
9	
10	
11	
12	
13	
14	
15	
16	
17	
18	
19	
20	
21	
22	
23	
24	
25	
26	
27	
28	
29	
30	
31	
32	
33	
34	
35	
36	
37	
38	
39	
40	
41	
42	
43	
44	
45	
46	
47	
48	
49	
50	
51	
52	
53	
54	
55	
56	
57	
58	
59	
60	
61	
62	
63	
64	
65	
66	
67	
68	
69	
70	
71	
72	
73	
74	
75	
76	
77	
78	
79	
80	
81	
82	
83	
84	
85	
86	
87	
88	
89	
90	
91	
92	
93	
94	
95	
96	
97	
98	
99	
100	

DATE	
BY	
REVISIONS	
1	
2	
3	
4	
5	
6	
7	
8	
9	
10	
11	
12	
13	
14	
15	
16	
17	
18	
19	
20	
21	
22	
23	
24	
25	
26	
27	
28	
29	
30	
31	
32	
33	
34	
35	
36	
37	
38	
39	
40	
41	
42	
43	
44	
45	
46	
47	
48	
49	
50	
51	
52	
53	
54	
55	
56	
57	
58	
59	
60	
61	
62	
63	
64	
65	
66	
67	
68	
69	
70	
71	
72	
73	
74	
75	
76	
77	
78	
79	
80	
81	
82	
83	
84	
85	
86	
87	
88	
89	
90	
91	
92	
93	
94	
95	
96	
97	
98	
99	
100	



LEGEND

- PROPOSED HMA SURFACE REMOVAL, 2" HMA SURFACE COURSE, MIX 'C', N50, 2"
- TEMPORARY CONCRETE BARRIER
- IMPACT ATTENUATOR, TEMPORARY (NON-REDIRECTIVE) TEST LEVEL 3
- TRAFFIC FLOW ARROW
- WORK ZONE
- DRUMS SPACED AT INTERVALS AS NOTED
- PAVEMENT MARKING REMOVAL
- TEMPORARY SIGN WITH MESSAGE

FILE NAME: sht-stage3_01 I-88.dgn	CHRISTIAN-ROGE & ASSOCIATES, INC. ENGINEERS-PLANNERS-SURVEYORS 211 WEST WACKER DRIVE CHICAGO, ILLINOIS 60606 PHONE: (312)372-2023 FAX: (312)372-8274	DESIGNED - E.M.	REVISED -	STATE OF ILLINOIS DEPARTMENT OF TRANSPORTATION	TRAFFIC CONTROL AND PROTECTION I-88 UNDER I-39 STAGE III		F.A.I. RTE.	SECTION	COUNTY	TOTAL SHEETS	SHEET NO.
PLOT DATE: 9/6/2012		DRAWN - B.K.	REVISED -				39	02 BRIDGE PAINTING 2013-2	OGLE	26	12
PLOT SCALE: 100.0000 / IN.		CHECKED - G.F.L.	REVISED -				CONTRACT NO. 64J27		FED. ROAD DIST. NO. 1 ILLINOIS FED. AID PROJECT		
		DATE - JULY 2012	REVISED -		SCALE:	SHEET NO.	OF SHEETS	STA.	TO STA.		