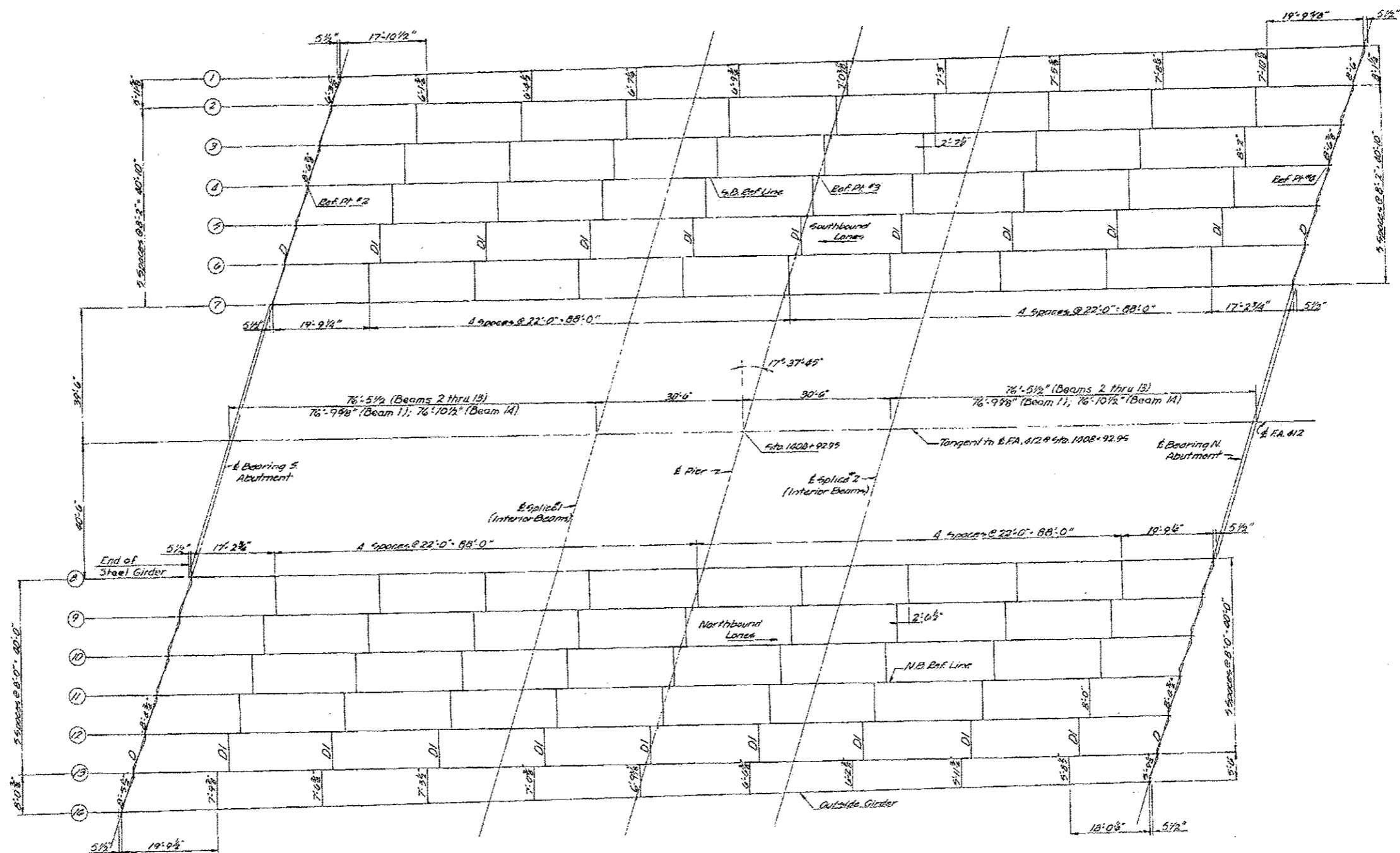


FOR INFORMATION ONLY

STATE OF ILLINOIS
DEPARTMENT OF TRANSPORTATION

ROUTE NO. 141	SECTION 141-1A	COUNTY OGLE	TOTAL SHEETS 200	SHEET NO. 14
FED. ROAD DIST. NO. 1 ILLINOIS PROJECT				28 SHEETS



* Dimensions Given Represent Length of Diaphragm & to E Girder.

FRAMING PLAN

Designed	M.V.M.
Checked	H.M.W.
Drawn	W.A.J.
Checked	H.M.W.

FRAMING PLAN
F.A. RTE. 412 SEC. 141-1HB-1
OGLE COUNTY
STA. 1408 + 92.95 (F.A. RTE. 412)

DATE	BY

DATE	BY

FILE NAME: 0264J27-shr-FramingPlan.dgn
PLOT DATE: 9/6/2012
PLOT SCALE: 100.0000 / 1 IN.

CR & A
CHRISTIAN-ROGE & ASSOCIATES, INC.
ENGINEERS-PLANNERS-SURVEYORS
211 WEST WACKER DRIVE
CHICAGO, ILLINOIS 60606
PHONE: (312)372-2023 FAX: (312)372-5274

DESIGNED	G.F.L.	REVISED	-
DRAWN	K.R.K.	REVISED	-
CHECKED	E.J.M.	REVISED	-
DATE	JULY 2012	REVISED	-

STATE OF ILLINOIS
DEPARTMENT OF TRANSPORTATION

SCALE:	SHEET NO.	OF	SHEETS	STA.	TO	STA.
--------	-----------	----	--------	------	----	------

F.A.I. RTE.	SECTION	COUNTY	TOTAL SHEETS	SHEET NO.
39	D2 BRIDGE PAINTING 2013-2	OGLE	26	20
FED. ROAD DIST. NO. 1 ILLINOIS PROJECT			CONTRACT NO. 64J27	