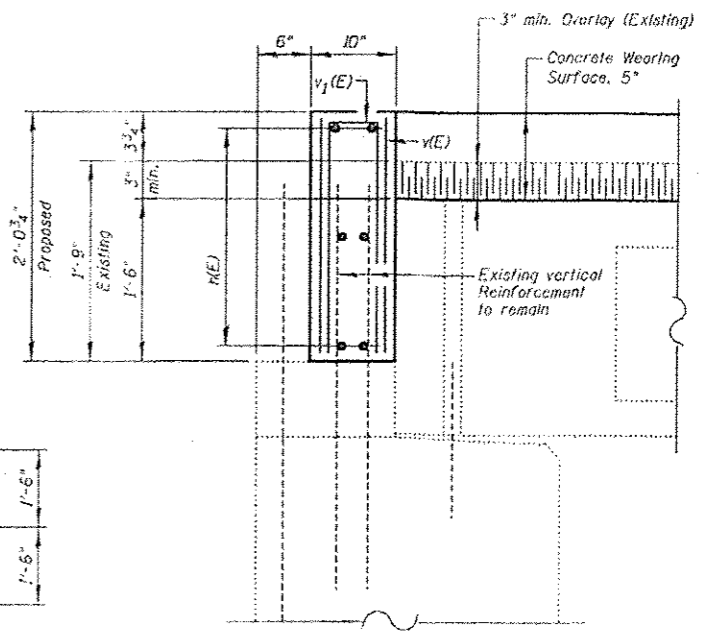
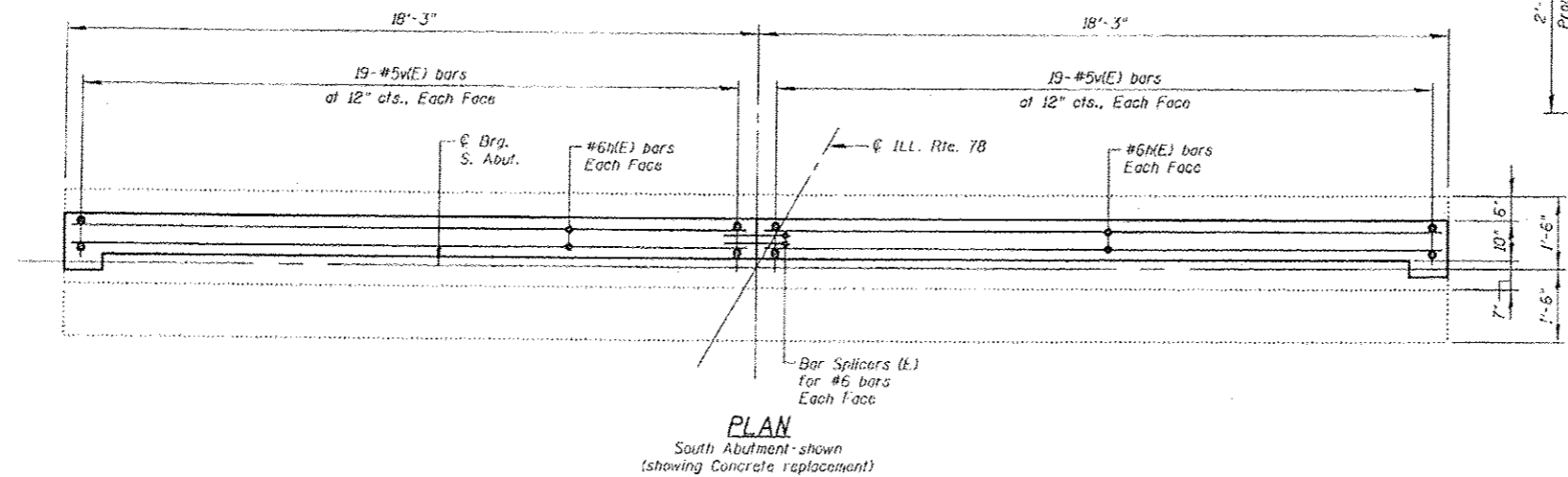
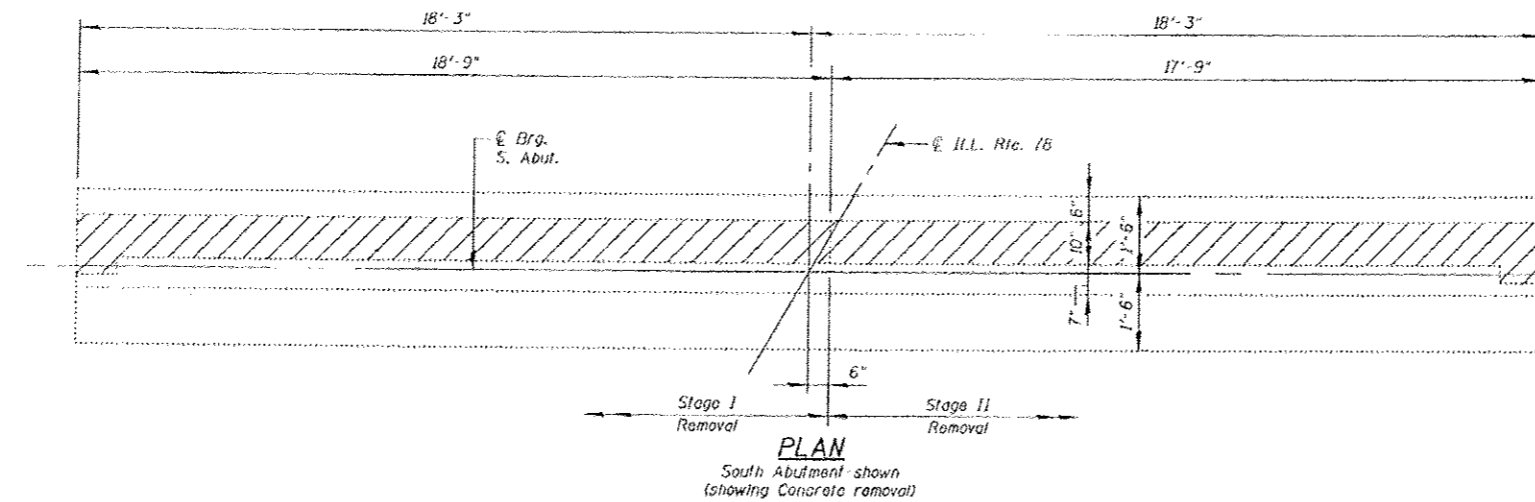
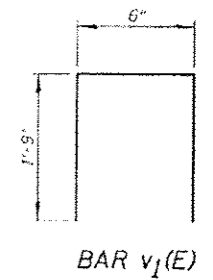
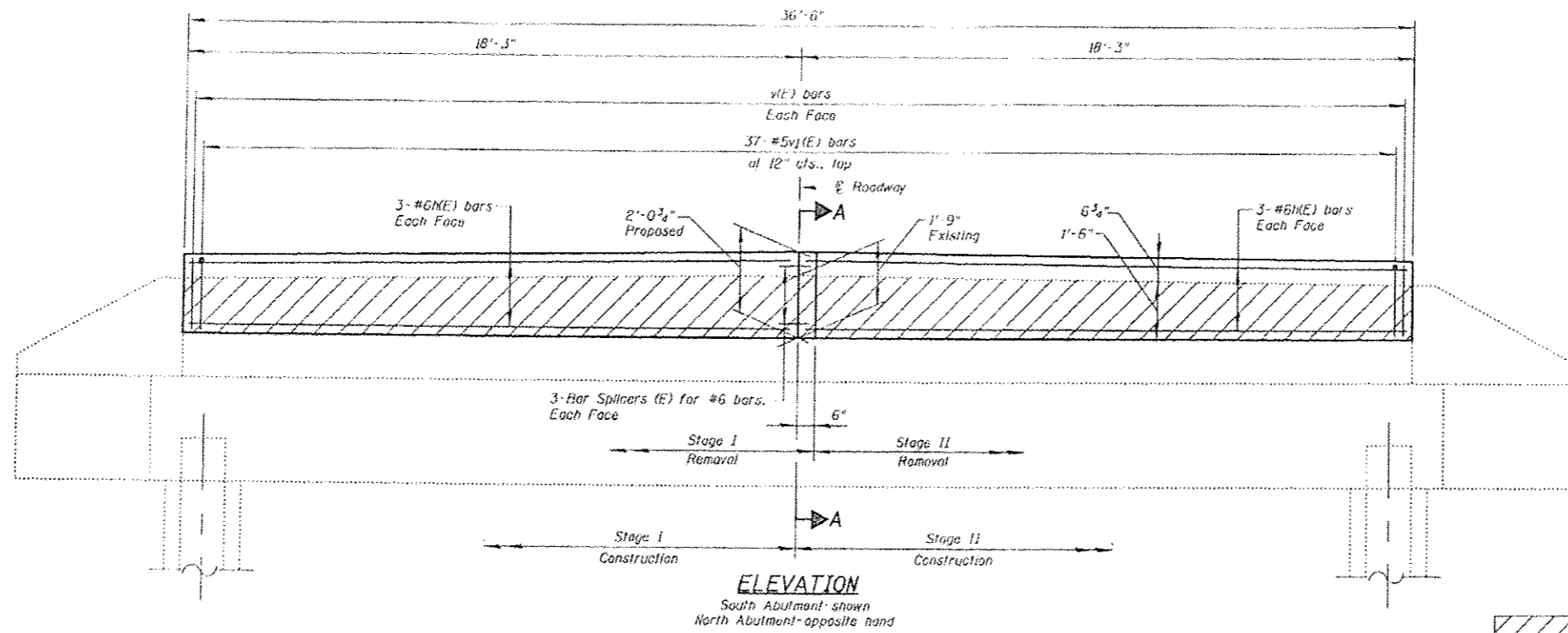


**BILL OF MATERIAL  
(TWO ABUTMENTS)**

Bar	No.	Size	Length	Shape	
v(E)	24	#6	18'-0"	—	
v(E)	152	#5	1'-9"	—	
vj(E)	74	#4	4'-0"	□	
Concrete Structures				Cu Yd	4.7
Reinforcement Bars, Epoxy Coated				Pound	920
Concrete Removal				Cu Yd	4.0



FILE NAME = I:\102709\Plan River\Structural\CADD Shueta\264355-05-abut\_details.dgn

**CHRISTIAN-ROGE & ASSOCIATES, INC.**

USER NAME = IDOT  
 PLOT SCALE = 5/8" = 1'-0"  
 PLOT DATE = 5/8/2013

DESIGNED - B.N.S./J.W./H.S.J.  
 CHECKED - B.N.S./H.S.J./J.W.  
 DRAWN - F.M.  
 DATE - MARCH, 2013

REVISED -  
 REVISED -  
 REVISED -  
 REVISED -

**STATE OF ILLINOIS  
 DEPARTMENT OF TRANSPORTATION**

**ABUTMENT DETAILS  
 STRUCTURE NO. 008-0035**

SHEET NO. 55 OF 57 SHEETS

F.A.P. RTE.	SECTION	COUNTY	TOTAL SHEETS	SHEET NO.
642	D2 DECK REPAIR 2013-4	CARROLL	25	18

CONTRACT NO. 64J55

ILLINOIS FED. AID PROJECT