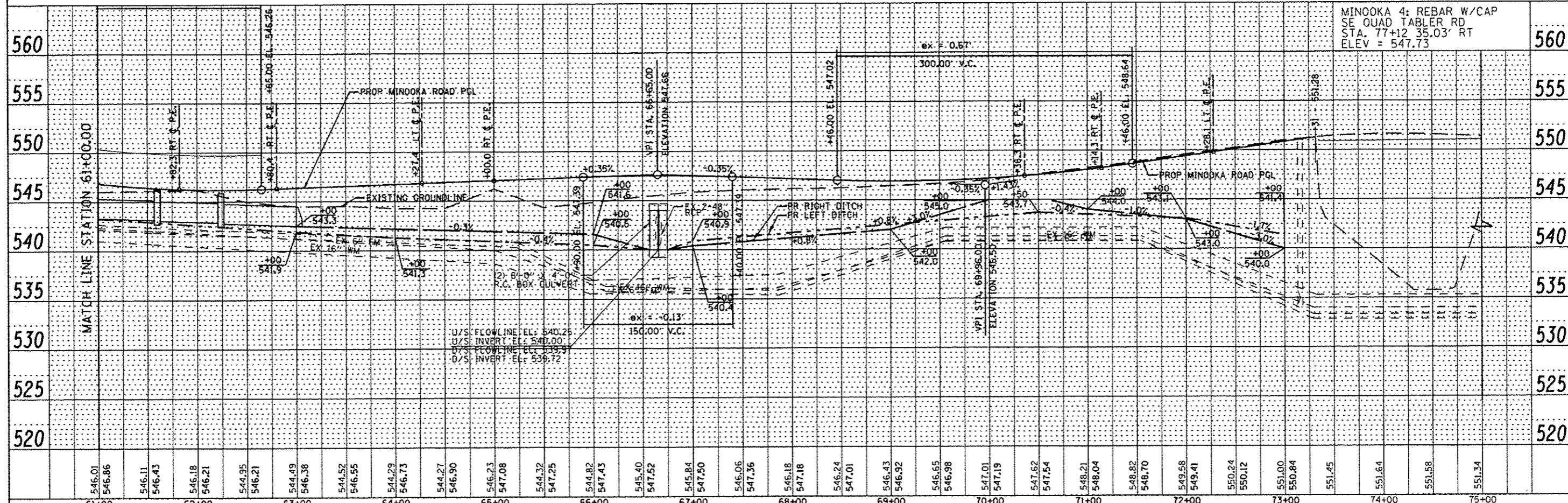
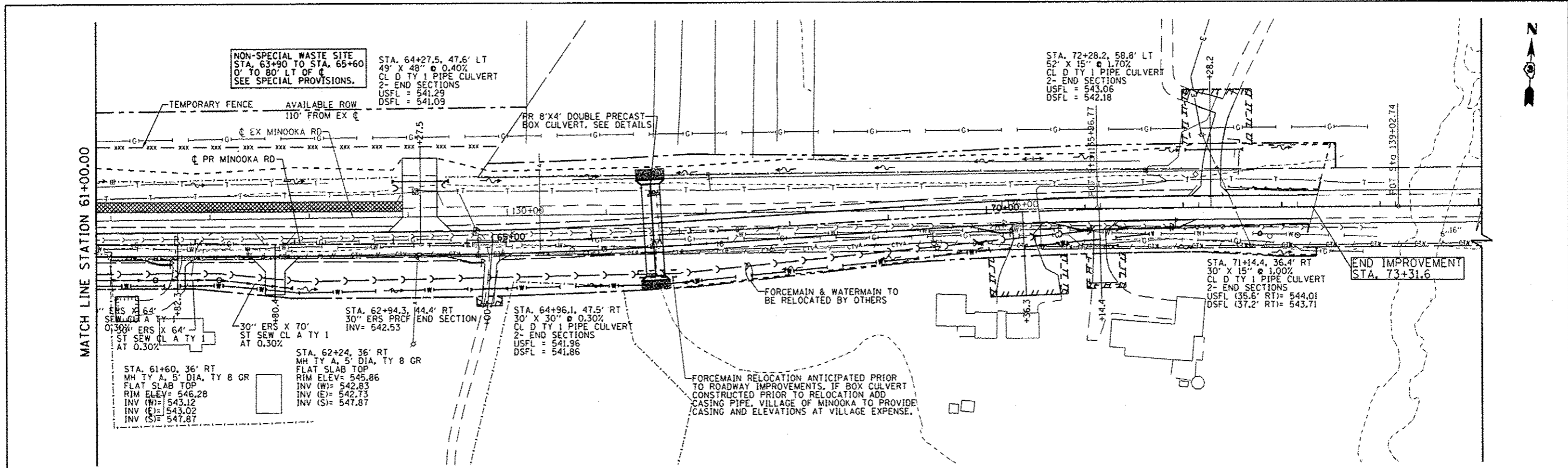


DATE	
BY	
REVISIONS	
NO.	
DATE	
BY	
REVISIONS	
NO.	
DATE	
BY	
REVISIONS	
NO.	

DATE	
BY	
REVISIONS	
NO.	
DATE	
BY	
REVISIONS	
NO.	



61+00	62+00	63+00	64+00	65+00	66+00	67+00	68+00	69+00	70+00	71+00	72+00	73+00	74+00	75+00
546.01	546.86	546.11	546.43	546.18	546.21	544.95	546.21	544.49	546.38	544.52	546.55	544.29	546.73	544.27
546.23	546.08	544.32	547.25	544.82	547.43	545.40	547.52	545.84	547.50	546.06	547.36	546.18	547.18	546.24
547.01	546.43	546.92	546.65	546.98	547.01	547.19	547.62	547.54	548.21	548.04	548.82	548.70	549.58	549.41
550.24	550.12	551.00	550.84	551.45	551.64	551.58	551.34							

FILE NAME =	USER NAME = duncanbd	DESIGNED -	REVISED - BDD 5/14/2013	MINOOKA ROAD		F.A.I. RTE.	SECTION	COUNTY	TOTAL SHEETS	SHEET NO.
cr:\p\work\p\dot\duncanbd\dms58037\ep0194-SM1-MINOOKA-DRAINPS.P.dgn		DRAWN -	REVISED -	DRAINAGE PLAN AND PROFILE		80	(32, 47-4HBR-2	GRUNDY	143	48
PLOT SCALE = 1/80.000 / in.		CHECKED -	REVISED -	STATE OF ILLINOIS		SCALE: 1/50		SHEET NO. 3 OF 3 SHEETS		STA. 61+00 TO STA. 75+00
PLOT DATE = 5/14/2013		DATE -	REVISED -	DEPARTMENT OF TRANSPORTATION		CONTRACT NO. 66873		ILLINOIS FED. AID PROJECT		

Rev. 6-3-13