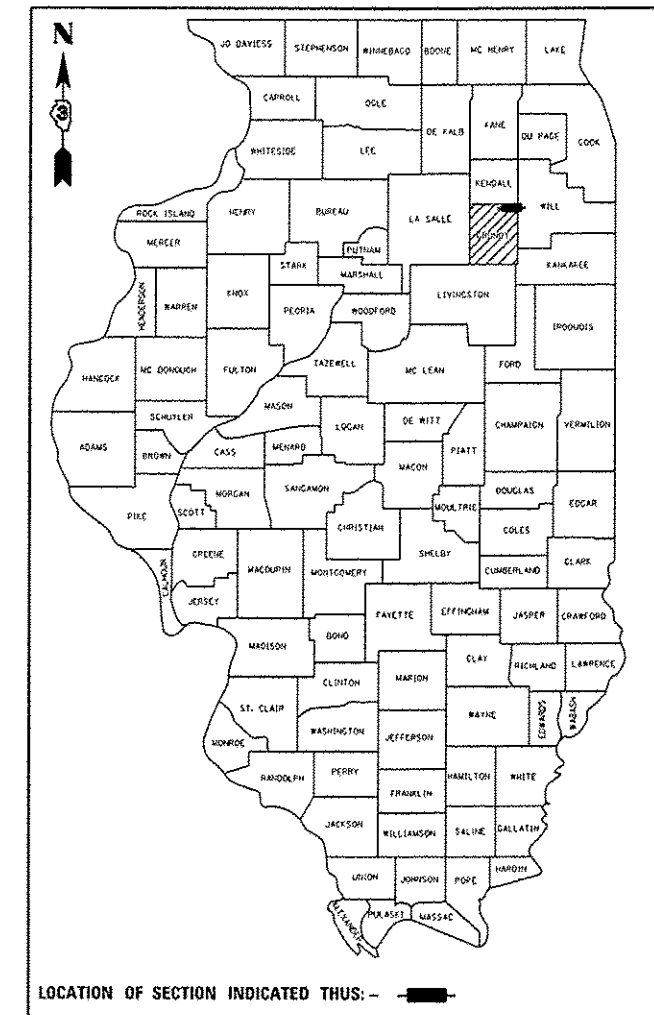


F.A.I. RTE.	SECTION	COUNTY	TOTAL SHEETS	SHEET NO.
80	(32,47-4)HBR-2	GRUNDY	143	1
		ILLINOIS		CONTRACT NO. 66873

P-93-019-04
D-93-010-09



I-80 - INTERSTATE
2010 ADT = 38500
PV = 75.7% SU = 6.1% MU = 18.2%

MINOOKA RD - MAJOR COLLECTOR
2010 ADT = 2800
PV = 92.5% SU = 5.2% MU = 2.3%

STATE OF ILLINOIS
DEPARTMENT OF TRANSPORTATION
DIVISION OF HIGHWAYS

SUBMITTED March 19 2013
Paul A. Loche
DEPUTY DIRECTOR OF HIGHWAYS, REGION ENGINEER

May 10 2013
John D. Baranzoli, P.E.
ENGINEER OF DESIGN AND ENVIRONMENT

May 10 2013
OMER OSMAN, P.E.
DIRECTOR OF HIGHWAYS, CHIEF ENGINEER

STATE OF ILLINOIS
DEPARTMENT OF TRANSPORTATION
DIVISION OF HIGHWAYS
**PROPOSED
HIGHWAY PLANS**

FAI ROUTE 80 (I-80)
SECTION (32,47-4)HBR-2
PROJECT: NHPP-0080(400)
STRUCTURE REPLACEMENT &
MINOOKA RD REALIGNMENT
GRUNDY COUNTY

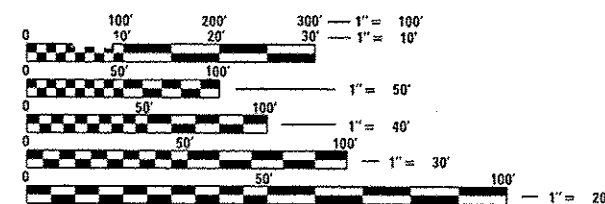
C-93-021-09

INDEX OF SHEETS

- 1 COVERSHEET
- 2 HIGHWAY STANDARDS, GENERAL NOTES & COMMITMENTS
- 3-14 SUMMARY OF QUANTITIES
- 15-17 TYPICAL SECTIONS
- 18-22 SCHEDULE OF QUANTITIES
- 23-25 ALIGNMENT, TIES & BENCHMARKS
- 26-29 PLAN AND PROFILE
- 30-45 SUGGESTED MAINTENANCE OF TRAFFIC & TRAFFIC CONTROL
- 46-48 DRAINAGE PLAN AND PROFILE
- 49-52 SUE INFORMATION
- 53-55 RIGHT OF WAY
- 56-57 EROSION CONTROL & LANDSCAPING
- 58-61 STRUCTURE INFORMATION - BOX CULVERT
- 62-94 STRUCTURE INFORMATION - SN 032-0119
- 95-101 EXISTING STRUCTURE - FOR INFORMATION ONLY
- 102-106 DETAILS
- 107-110 PAVEMENT BORING LOGS
- 111-143 CROSS SECTIONS

FOR LIST OF HIGHWAY STANDARDS, SEE SHEET 2

MICROFILMED _____
REEL NUMBER _____
AWARDED _____
RESIDENT ENGINEER _____
AS BUILT CHANGES WERE MADE
ON THE FOLLOWING SHEETS _____

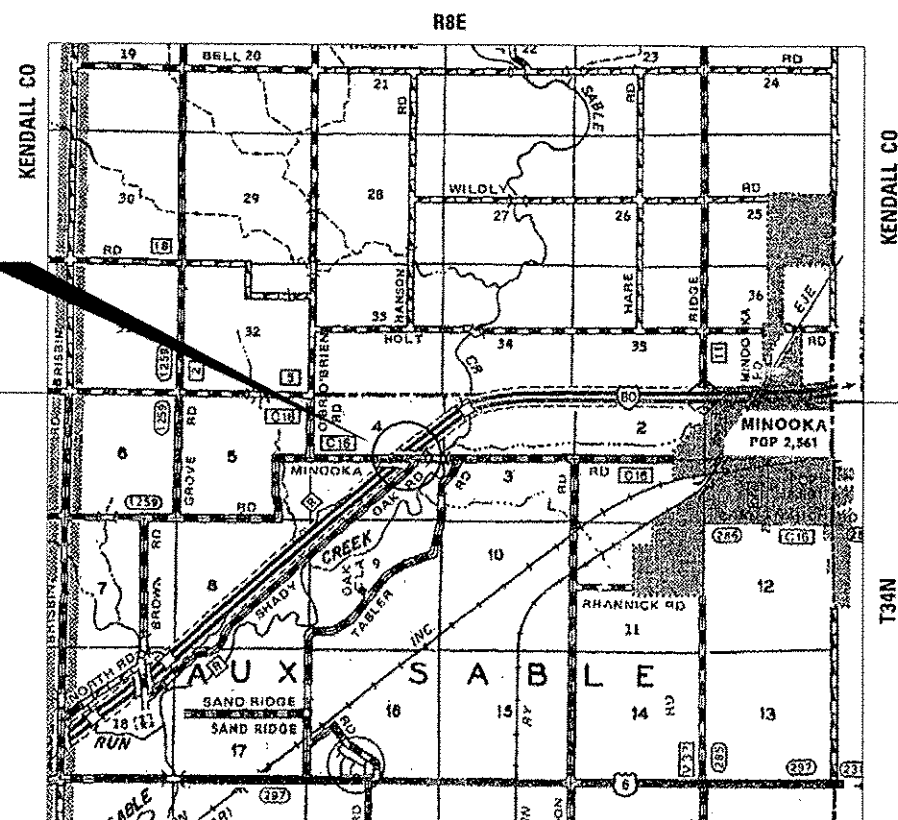


FULL SIZE PLANS HAVE BEEN PREPARED USING STANDARD ENGINEERING SCALES. REDUCED SIZED PLANS WILL NOT CONFORM TO STANDARD SCALES. IN MAKING MEASUREMENTS ON REDUCED PLANS, THE ABOVE SCALES MAY BE USED.

J.U.L.I.E.
JOINT UTILITY LOCATION INFORMATION FOR EXCAVATION
1-800-892-0123
OR 811

PROJECT ENGINEER: CRAIG REED, P.E.
UNIT CHIEF: BRAD DUNCAN, P.E.
TOWNSHIP: AUX SABLE
CONTRACT NO. 66873

STRUCTURE REPLACEMENT
EX. SN 032-0046
PROP. SN 032-0119



GROSS LENGTH & NET LENGTH = 3674.6 FT = 0.696 MI

PRINTED BY THE AUTHORITY
OF THE STATE OF ILLINOIS