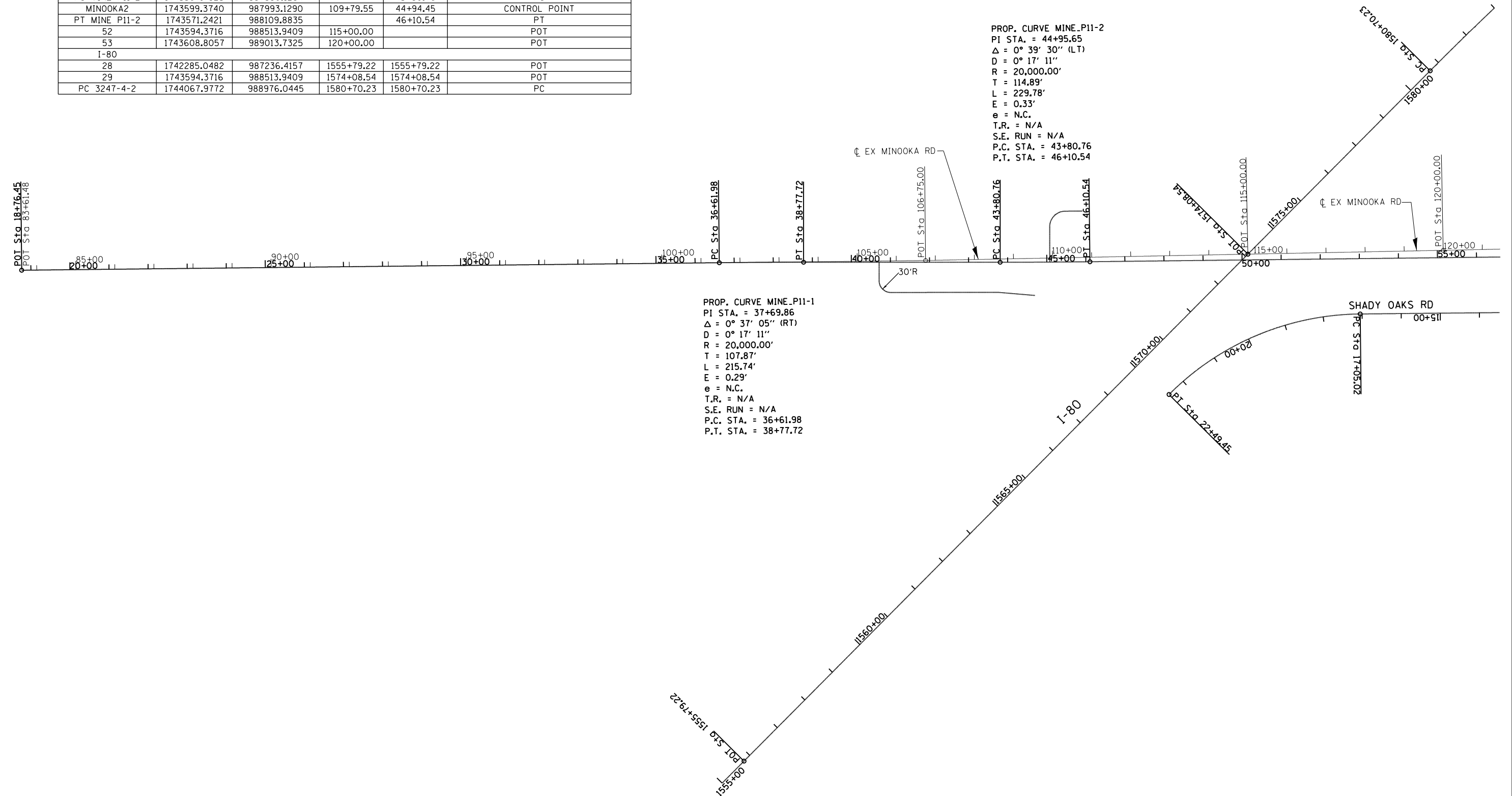


HORIZONTAL CONTROL POINTS					
POINT	NORTHING	EASTING	STATION EXISTING ALIGNMENT	STATION PROPOSED ALIGNMENT	DESCRIPTION
MINOOKA ROAD					
MINOOKA1	1743497.1060	985316.7020	83+01.39		CONTROL POINT
50	1743524.1580	985376.2280	83+61.48	18+76.45	POT
PC MINE P11-1	1743559.9665	987161.4016		36+61.98	PC
PT MINE P11-1	1743563.1297	987377.1175		38+77.72	PT
51	1743570.5552	987689.2847	106+75.00		POT
PC MINE P11-2	1743567.7923	987880.1284		43+80.76	PC
MINOOKA2	1743599.3740	987993.1290	109+79.55	44+94.45	CONTROL POINT
PT MINE P11-2	1743571.2421	988109.8835		46+10.54	PT
52	1743594.3716	988513.9409	115+00.00		POT
53	1743608.8057	989013.7325	120+00.00		POT
I-80					
28	1742285.0482	987236.4157	1555+79.22	1555+79.22	POT
29	1743594.3716	988513.9409	1574+08.54	1574+08.54	POT
PC 3247-4-2	1744067.9772	988976.0445	1580+70.23	1580+70.23	PC



PROP. CURVE MINE_P11-2
 PI STA. = 44+95.65
 Δ = 0° 39' 30" (LT)
 D = 0° 17' 11"
 R = 20,000.00'
 T = 114.89'
 L = 229.78'
 E = 0.33'
 e = N.C.
 T.R. = N/A
 S.E. RUN = N/A
 P.C. STA. = 43+80.76
 P.T. STA. = 46+10.54

PROP. CURVE MINE_P11-1
 PI STA. = 37+69.86
 Δ = 0° 37' 05" (RT)
 D = 0° 17' 11"
 R = 20,000.00'
 T = 107.87'
 L = 215.74'
 E = 0.29'
 e = N.C.
 T.R. = N/A
 S.E. RUN = N/A
 P.C. STA. = 36+61.98
 P.T. STA. = 38+77.72



FILE NAME =	USER NAME = duncanbd	DESIGNED -	REVISED -
et:\pwork\pwork\dot\duncanbd\dms58037\ep01904-sht-ATB.dgn		DRAWN -	REVISED -
Default	PLOT SCALE = 250.0000' / in.	CHECKED -	REVISED -
	PLOT DATE = 3/15/2013	DATE -	REVISED -

**STATE OF ILLINOIS
DEPARTMENT OF TRANSPORTATION**

**ALIGNMENT, TIES &
BENCHMARKS**

SCALE: 1"=125' SHEET 1 OF 3 SHEETS STA. TO STA.

F.A.I. RTE.	SECTION	COUNTY	TOTAL SHEETS	SHEET NO.
80	(32,47-4)HBR-2	GRUNDY	143	23
CONTRACT NO. 66873				
ILLINOIS FED. AID PROJECT				