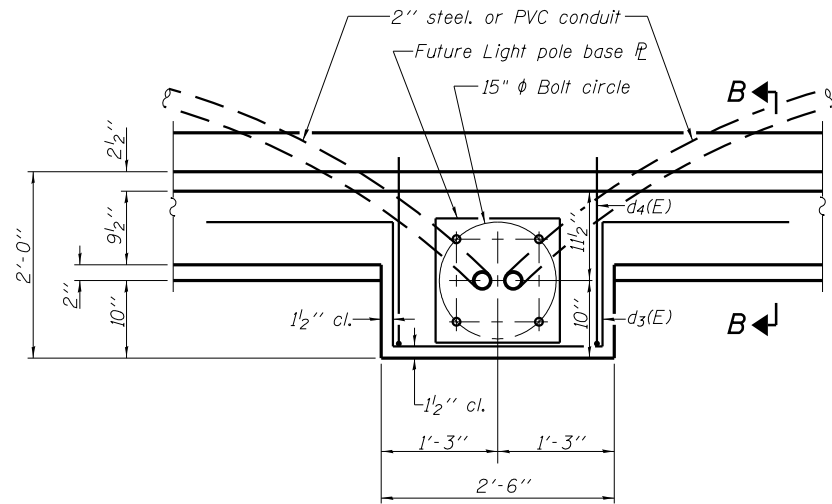
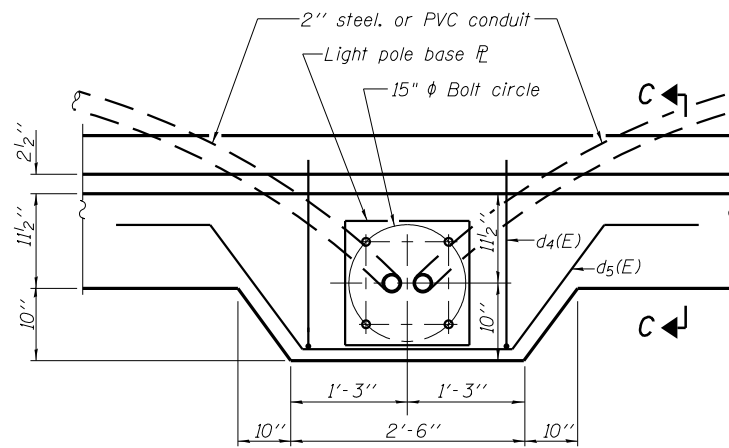


STATE OF ILLINOIS  
DEPARTMENT OF TRANSPORTATION



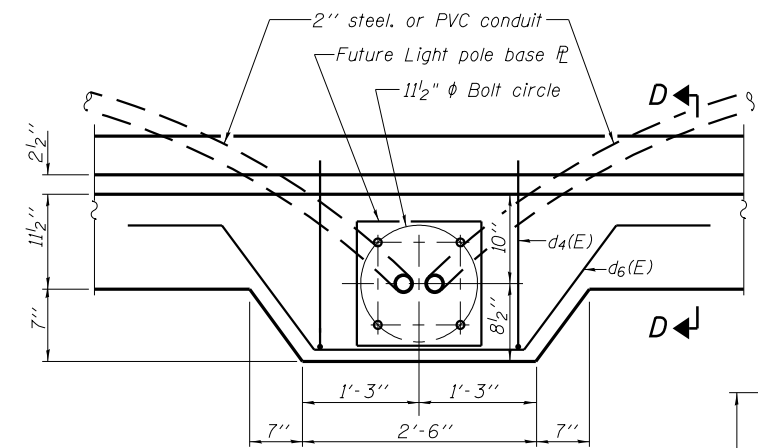
**VIEW OF LIGHT POLE MOUNTED ON CONCRETE PARAPET SOUTH SIDE**

**TYPE 1**  
(2 Required)



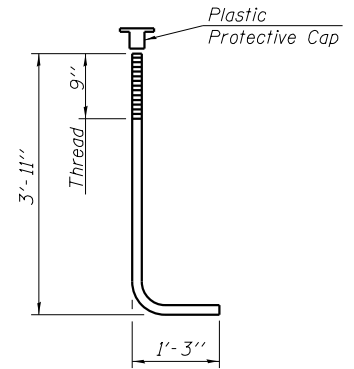
**VIEW OF LIGHT POLE MOUNTED ON CONCRETE PARAPET NORTH SIDE**

**TYPE 2**  
(2 Required)



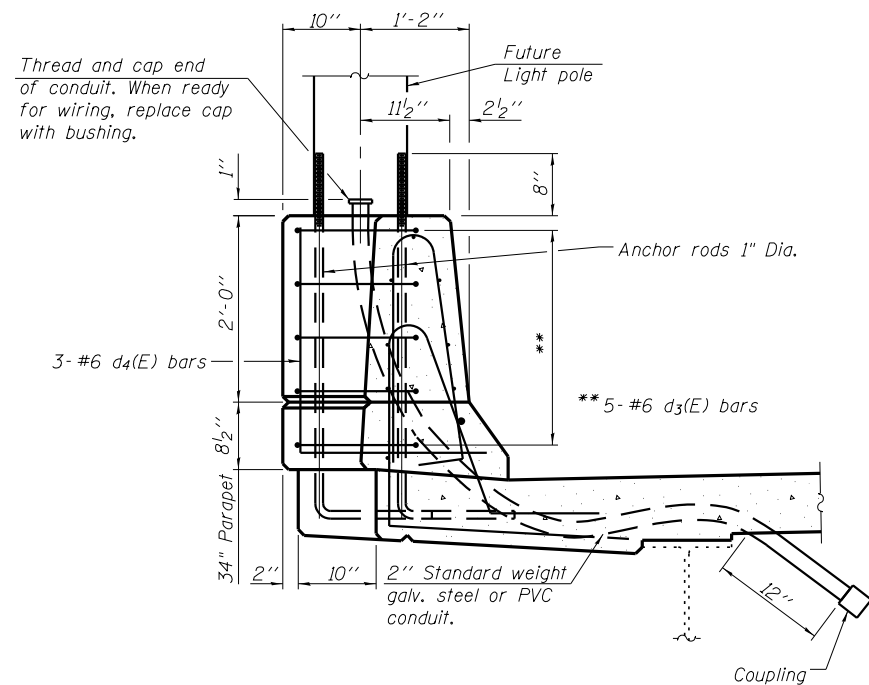
**VIEW OF LIGHT POLE MOUNTED ON CONCRETE PARAPET NORTH SIDE**

**TYPE 3**  
(7 Required)

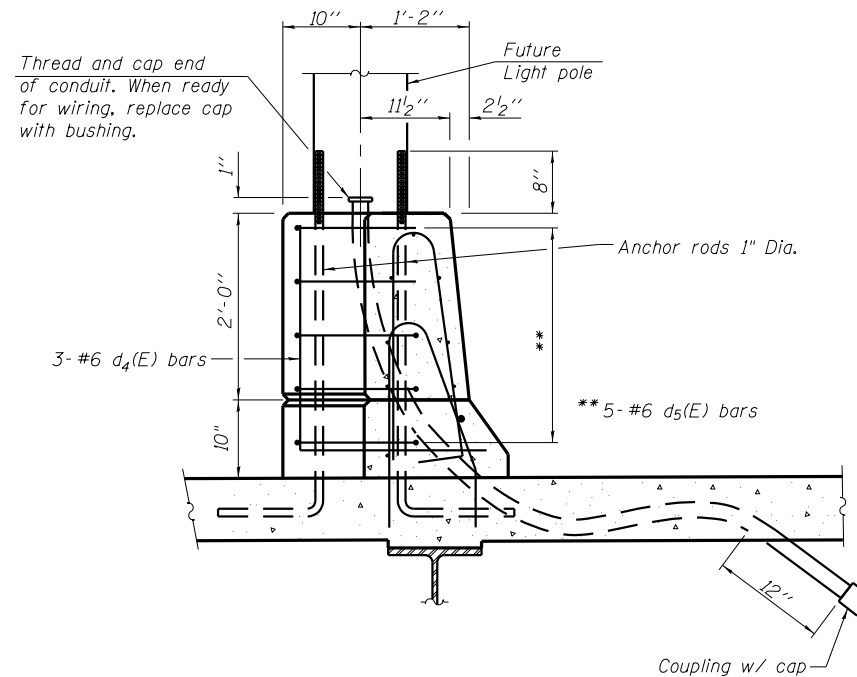


**ANCHOR ROD**  
Dia. as specified for light poles.  
(ASTM F 1554 Grade 105)

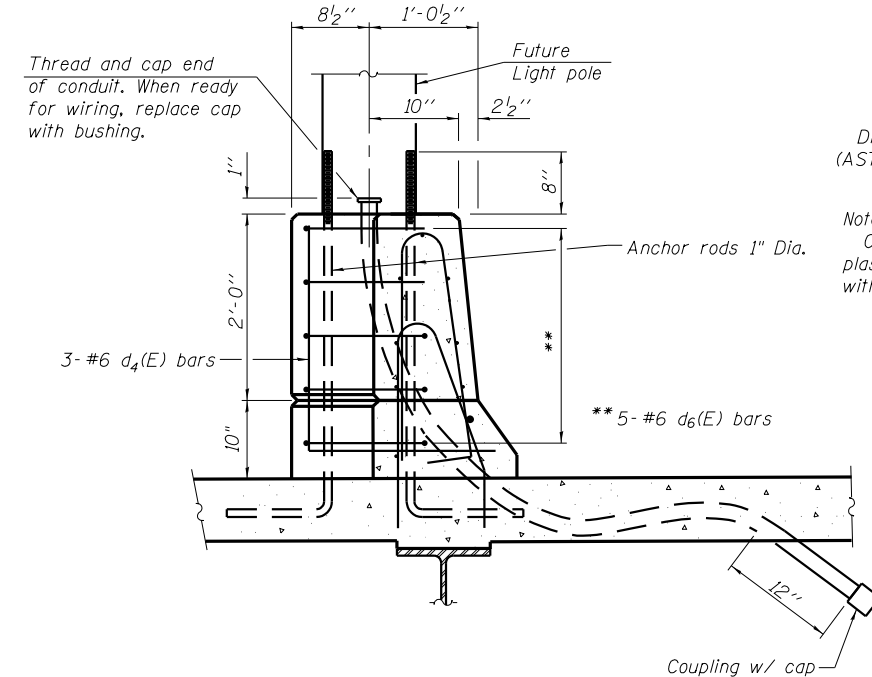
Note:  
Cost of anchor rods, protective plastic caps and conduit is included with Concrete Superstructure.



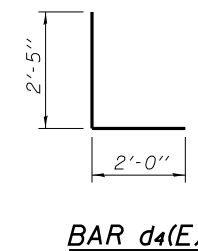
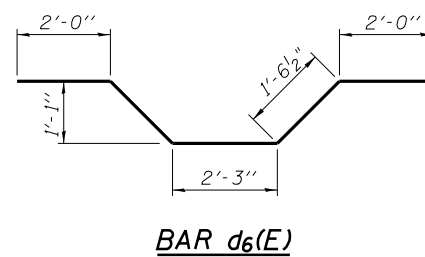
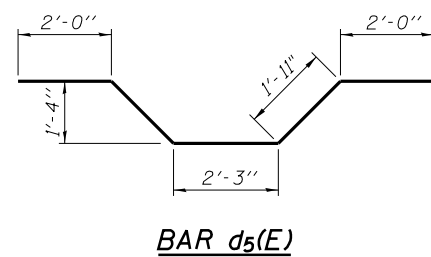
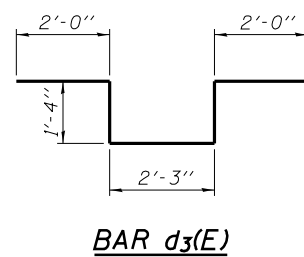
**SECTION B-B**



**SECTION C-C**



**SECTION D-D**



DESIGNED - JSI/MAJ/JFS
CHECKED - JFS/MJB
DRAWN - MLB/JLP
CHECKED - JFS/MJB

**SUPERSTRUCTURE DETAILS**  
**STRUCTURE NO. 032-0119**

**Foth**  
Foth Infrastructure & Environment, LLC  
7500 North Harker Drive  
Peoria, IL 61615  
Phone: 309-691-5300 Fax: 309-691-1892  
Illinois Registration Number 184,004913

SHEET NO. 13 33 SHEETS	F.A.U RTE.	SECTION	COUNTY	TOTAL SHEETS	SHEET NO.
	400	(32,47-4) HBR-2	GRUNDY	143	74
S.N. 032-0119			CONTRACT NO. 66873		
FED. ROAD DIST. NO.		ILLINOIS FED. AID PROJECT			

c:\pw\work\dotduncan\bd0181369113-SUPERSTRUCTURE DETAILS.dgn