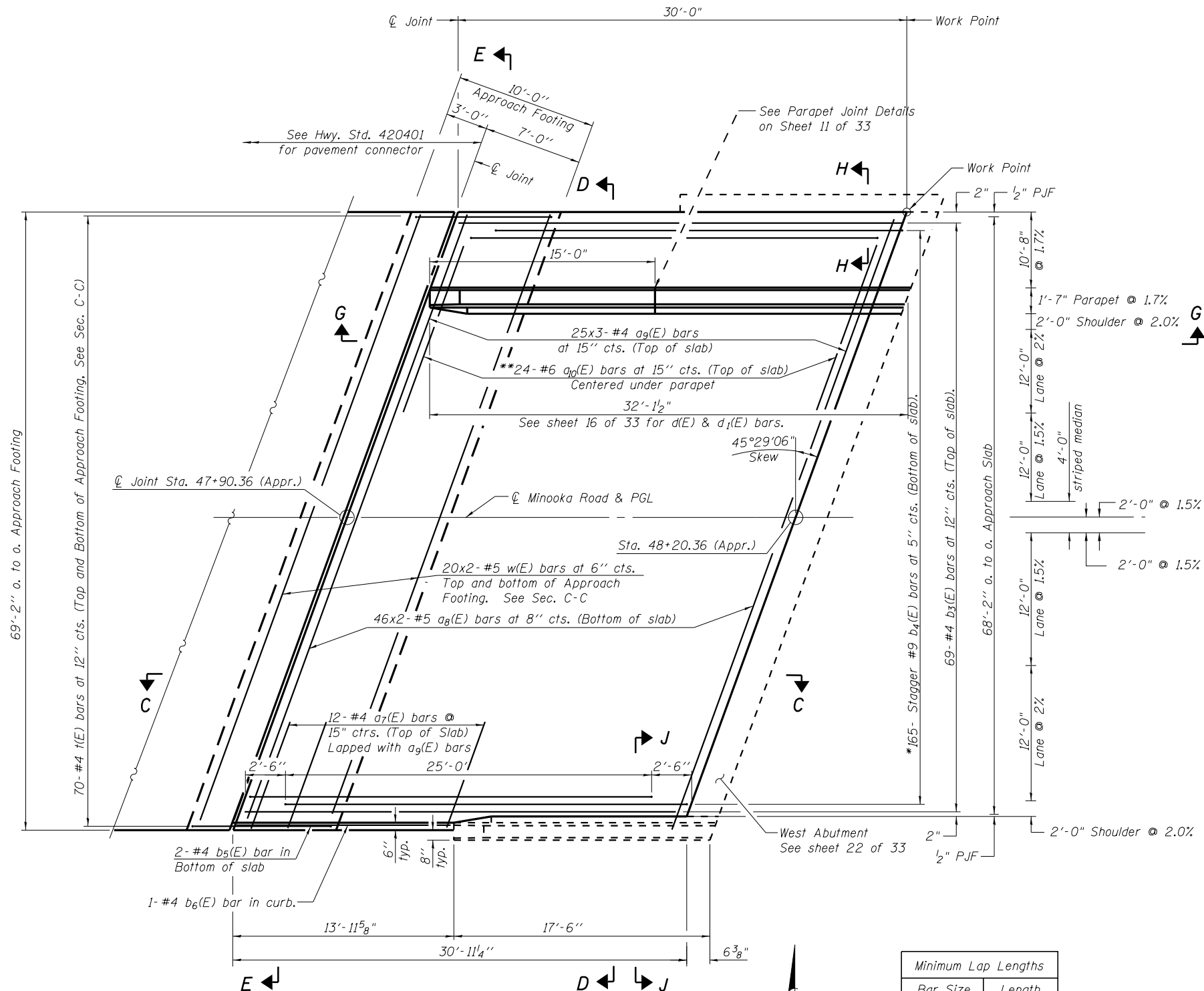


STATE OF ILLINOIS
DEPARTMENT OF TRANSPORTATION

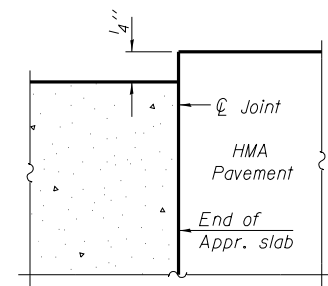


PLAN - WEST APPROACH PAVEMENT

* Tilt #9 b₄(E) bars as required to maintain clearance.
** Alternate with a₉(E) bars

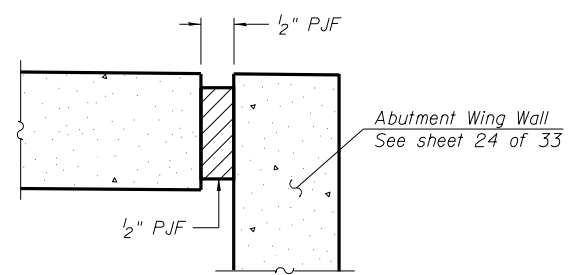
Minimum Lap Lengths	
Bar Size	Length
#4	1'-4"
#5	1'-8"

Notes:
See sheet 16 of 33 for Sections C-C, D-D, E-E and View G-G.
a₇(E), a₈(E), a₉(E), and w(E) bar spacings measured parallel to \bar{C} Rdwy.



FLEXIBLE PAVEMENT

DETAIL A



VIEW H-H

View J-J similar

(Sheet 1 of 3)

BRIDGE APPROACH SLAB DETAILS
STRUCTURE NO. 032-0119

DESIGNED	- JSI/MAJ/JFS
CHECKED	- JFS/MJB
DRAWN	- MLB/JLP
CHECKED	- JFS/MJB

Foth
Foth Infrastructure & Environment, LLC
7500 North Harker Drive
Peoria, IL 61615
Phone: 309-691-5300 Fax: 309-691-1892
Illinois Registration Number 184.004913

SHEET NO. 14 33 SHEETS	F.A.U. RTE.	SECTION	COUNTY	TOTAL SHEETS	SHEET NO.
	400	(32,47-4) HBR-2	GRUNDY	143	75
S.N. 032-0119			CONTRACT NO. 66873		
FED. ROAD DIST. NO. - ILLINOIS FED. AID PROJECT					

c:\pwwork\widot\duncanbd\0181369114-BRIDGE APPROACH SLAB DETAILS.dgn