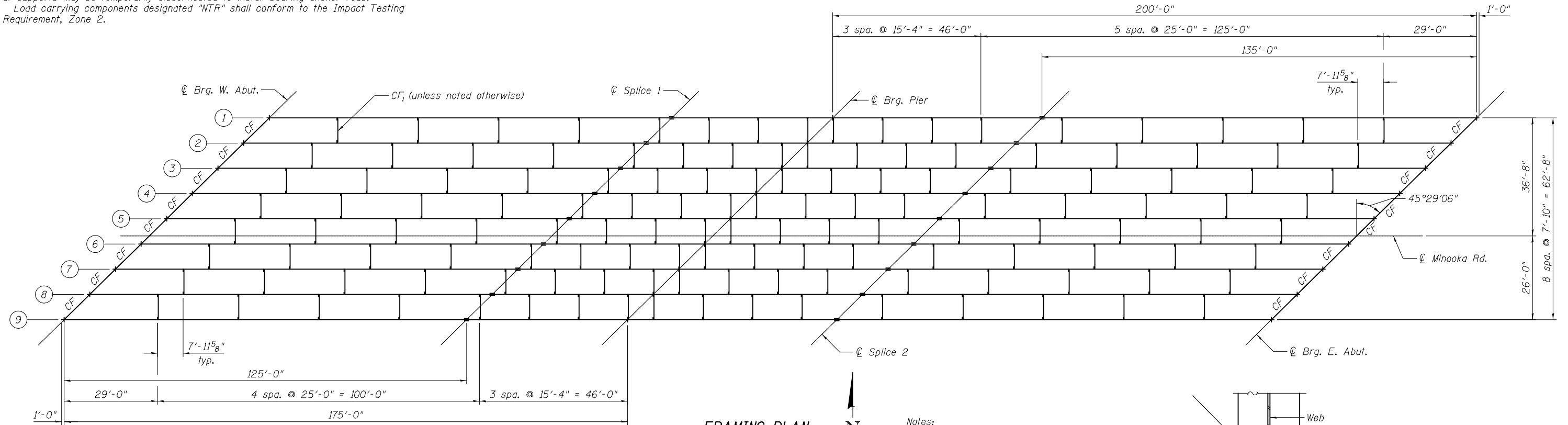


STATE OF ILLINOIS
DEPARTMENT OF TRANSPORTATION

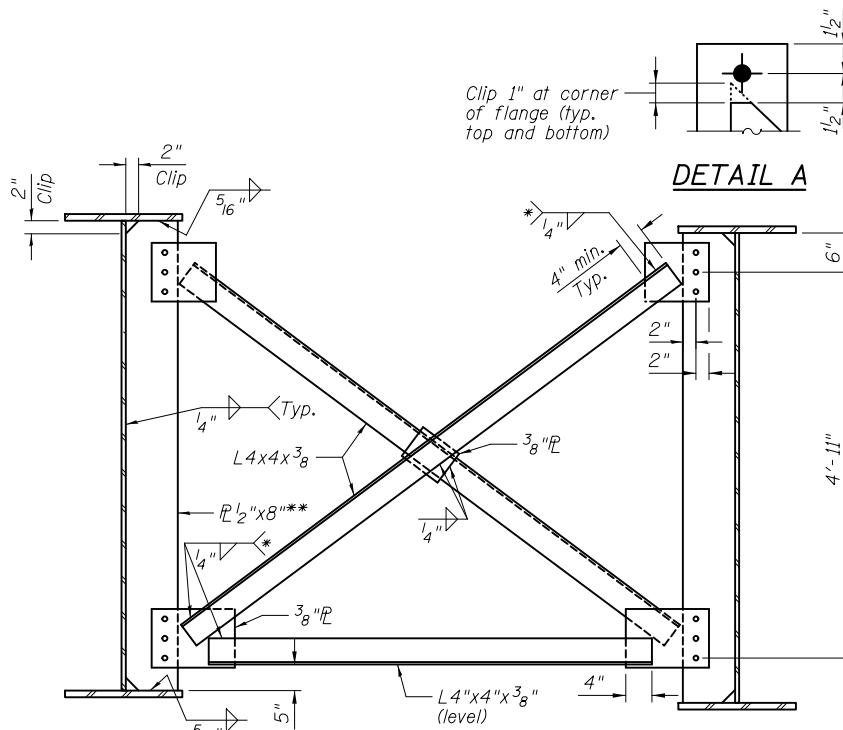
General Notes:

All cross frames or diaphragms shall be installed as steel is erected and secured with erection pins and bolts except as otherwise noted. Individual cross frames or diaphragms at supports may be temporarily disconnected to install bearing anchor rods.
Load carrying components designated "NTR" shall conform to the Impact Testing Requirement, Zone 2.

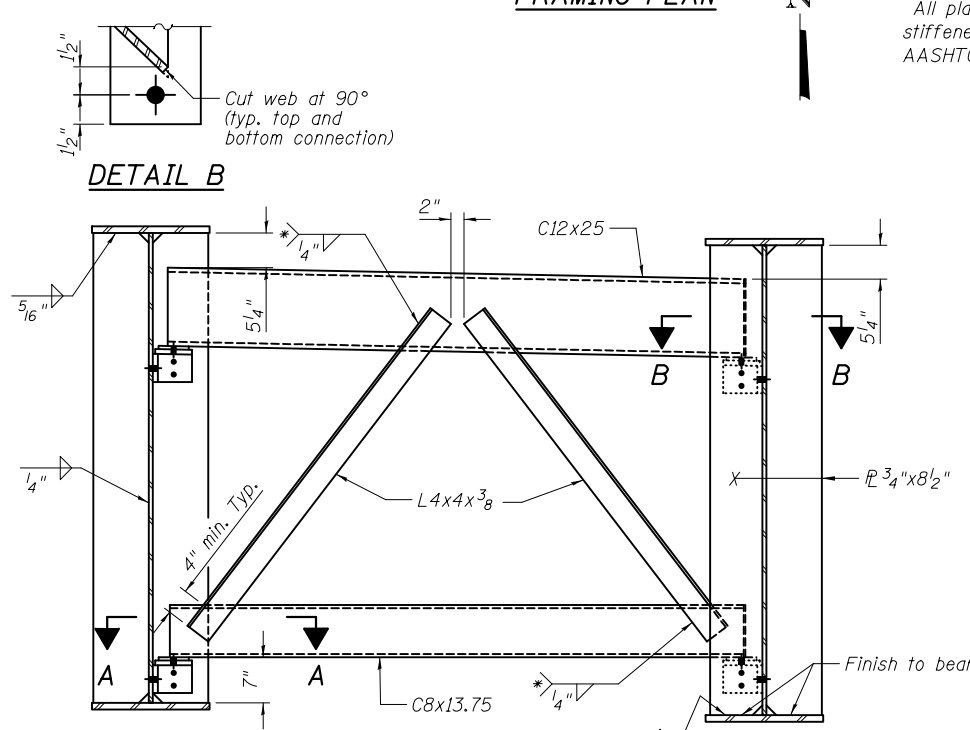


FRAMING PLAN

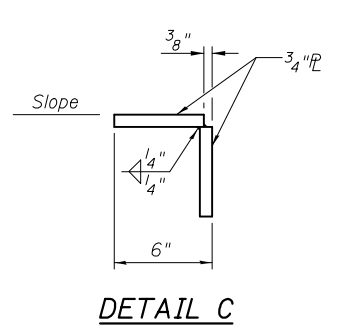
Notes:
All plates of the girders, including bearing stiffeners and splice plates, shall be AASHTO M270, Grade 50.



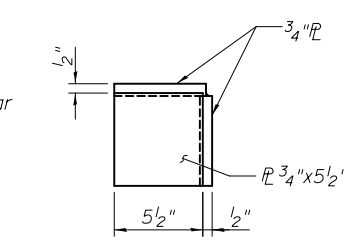
INTERIOR CROSS FRAME CF
(136 Required)



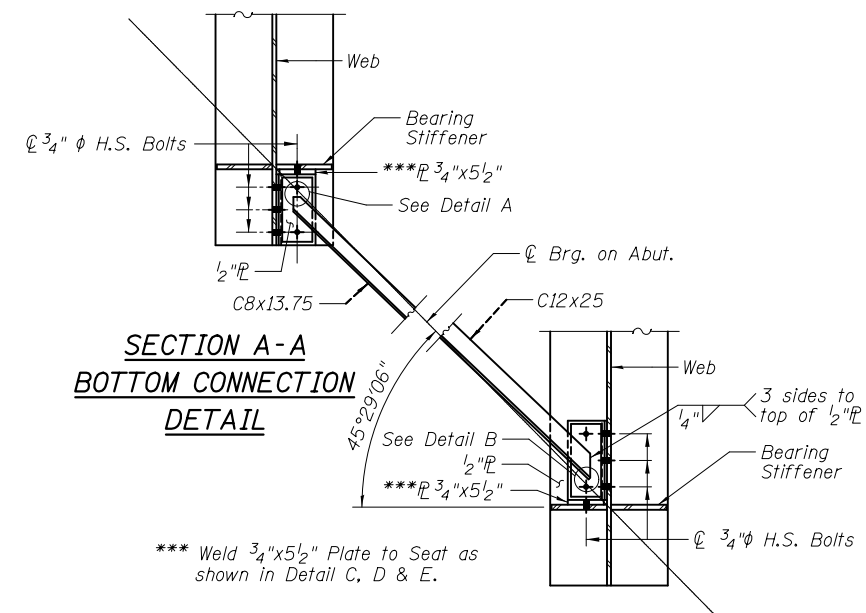
END CROSS FRAME CF
(16 Required)



DETAIL C



DETAIL D



SECTION A-A
BOTTOM CONNECTION
DETAIL

SECTION B-B
TOP CONNECTION
DETAIL

*** Weld 3/4"x5 1/2" Plate to Seat as shown in Detail C, D & E.

FRAMING PLAN
STRUCTURE NO. 032-0119

DESIGNED	- JSI/MAJ/JFS
CHECKED	- JFS/MJB
DRAWN	- MLB/JLP
CHECKED	- JFS/MJB

**Connection Plate size typical at all locations except at \odot Brg. Pier.
See "Girder Elevation" for connection plate size at \odot Brg. Pier.

General Cross Frame notes:
Use 3/4" H.S. Bolts for cross frame connections.
Detail 1/8" ϕ holes for all 3/4" ϕ Bolts.
Two hardened washers required for each set of oversized holes.

* Fillet weld angles along 3 sides on one face of Gusset Plate or Channel.

Foth
Foth Infrastructure & Environment, LLC
7500 North Harker Drive
Peoria, IL 61615
Phone: 309-691-5300 Fax: 309-691-1892
Illinois Registration Number 184.004913

SHEET NO. 18 33 SHEETS	F.A.U. RTE.	SECTION	COUNTY	TOTAL SHEETS	SHEET NO.
	400	(32,47-4) HBR-2	GRUNDY	143	79
FED. ROAD DIST. NO.		ILLINOIS	FED. AID PROJECT		
		S.N. 032-0119	CONTRACT NO. 66873		