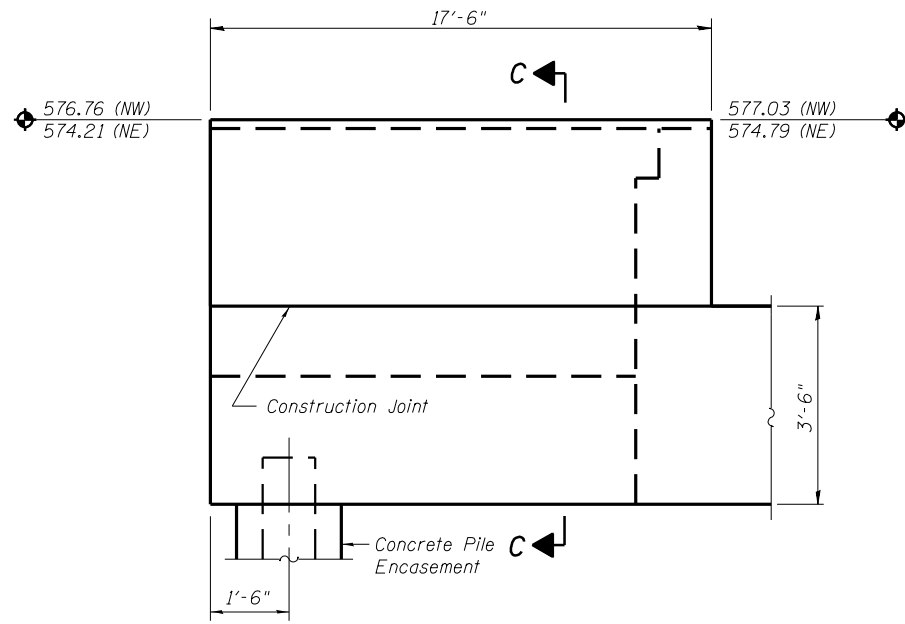
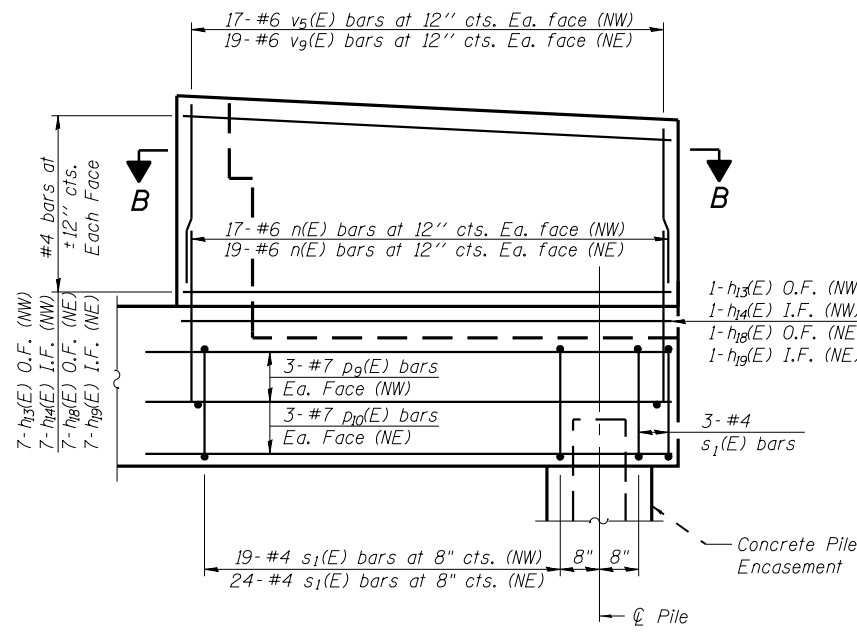


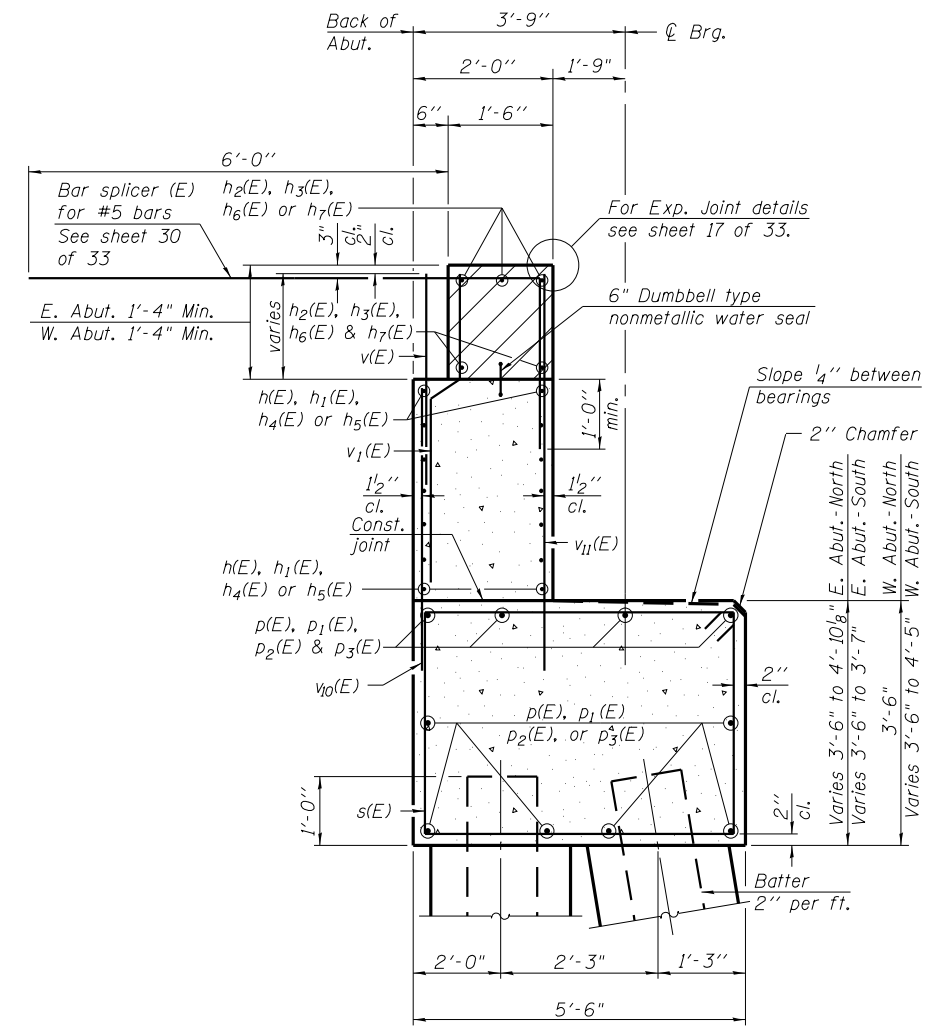
STATE OF ILLINOIS
DEPARTMENT OF TRANSPORTATION



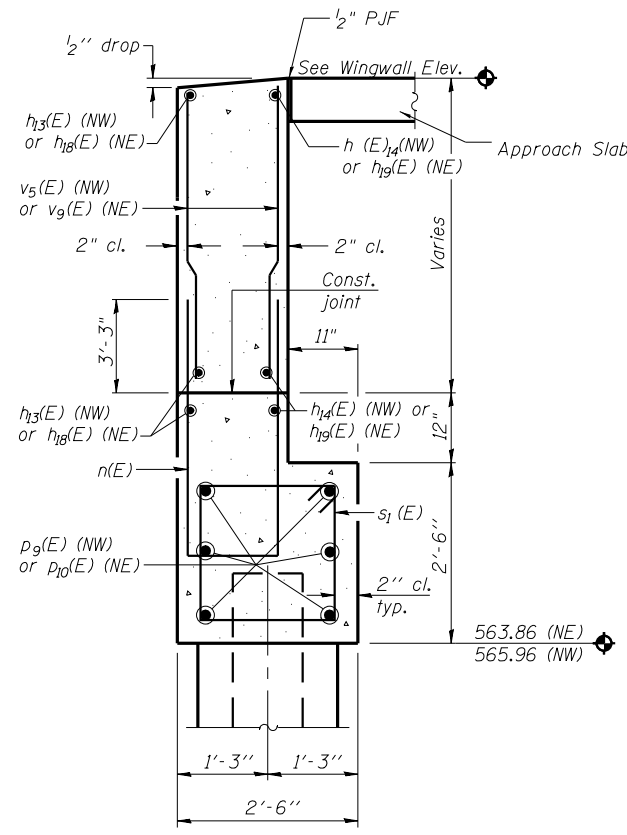
NORTHEAST WING WALL ELEVATION (SHOWN)
NORTHWEST WING WALL ELEVATION (SIMILAR)
Showing Dimensions



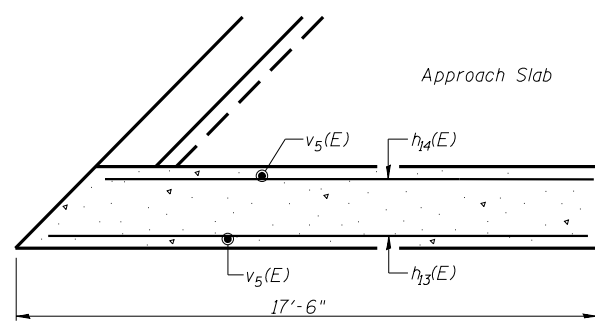
NORTHWEST WING WALL ELEVATION (SHOWN)
NORTHEAST WING WALL ELEVATION (SIMILAR)
Showing Reinforcement



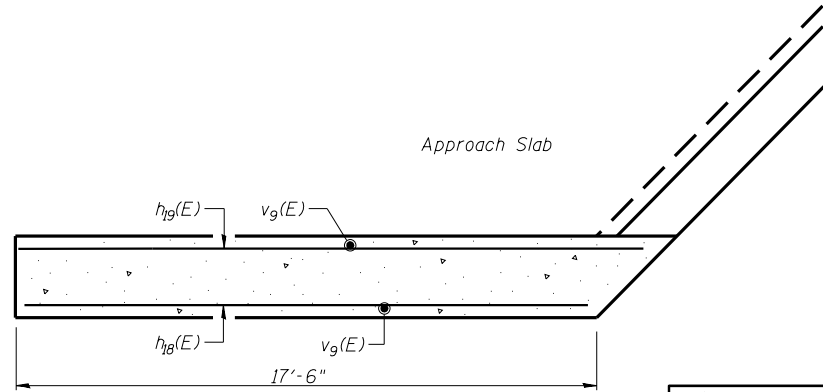
SEC. THRU ABUT.



SECTION C-C



SECTION B-B
NORTHWEST WINGWALL



SECTION B-B
NORTHEAST WINGWALL

Notes:
Hatched area to be poured after superstructure false work has been removed. Quantity of concrete included with Concrete Superstructure on sheet 16 of 33.
Space reinforcement in cap to miss anchor bolts. Pour steps monolithically with cap.
For Concrete Encasement details, see sheet 31 of 33.
NW = North Wingwall, West Abutment
NE = North Wingwall, East Abutment

ABUTMENT SECTIONS AND NORTH WING WALLS
STRUCTURE NO. 032-0119

DESIGNED	- JSI/MAJ/JFS
CHECKED	- JFS/MJB
DRAWN	- MLB/JLP
CHECKED	- JFS/MJB

Foth
Foth Infrastructure & Environment, LLC
7500 North Harker Drive
Peoria, IL 61615
Phone: 309-691-5300 Fax: 309-691-1892
Illinois Registration Number 184,004913

SHEET NO. 24 33 SHEETS	F.A.U RTE.	SECTION	COUNTY	TOTAL SHEETS	SHEET NO.
	400	(32,47-4) HBR-2	GRUNDY	143	85
S.N. 032-0119			CONTRACT NO. 66873		
FED. ROAD DIST. NO.		ILLINOIS FED. AID PROJECT			

c:\pwwork\pwwork\duncanbd\181369124-ABUT-EAST A-1-D.dgn