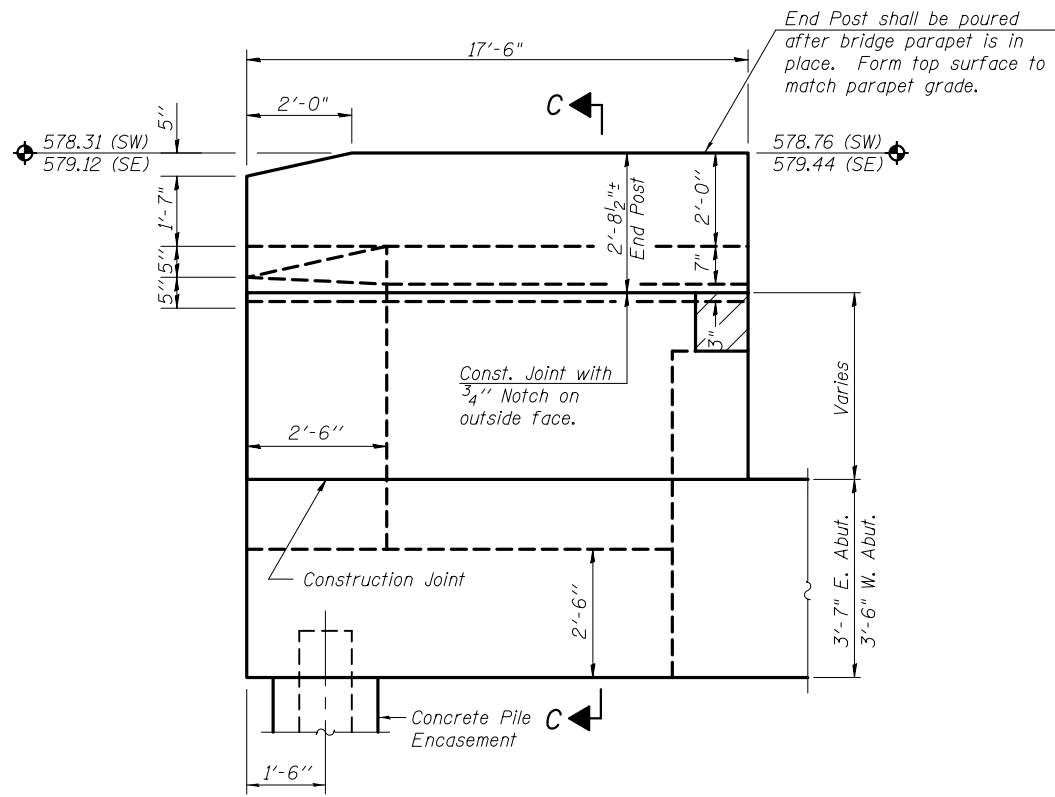
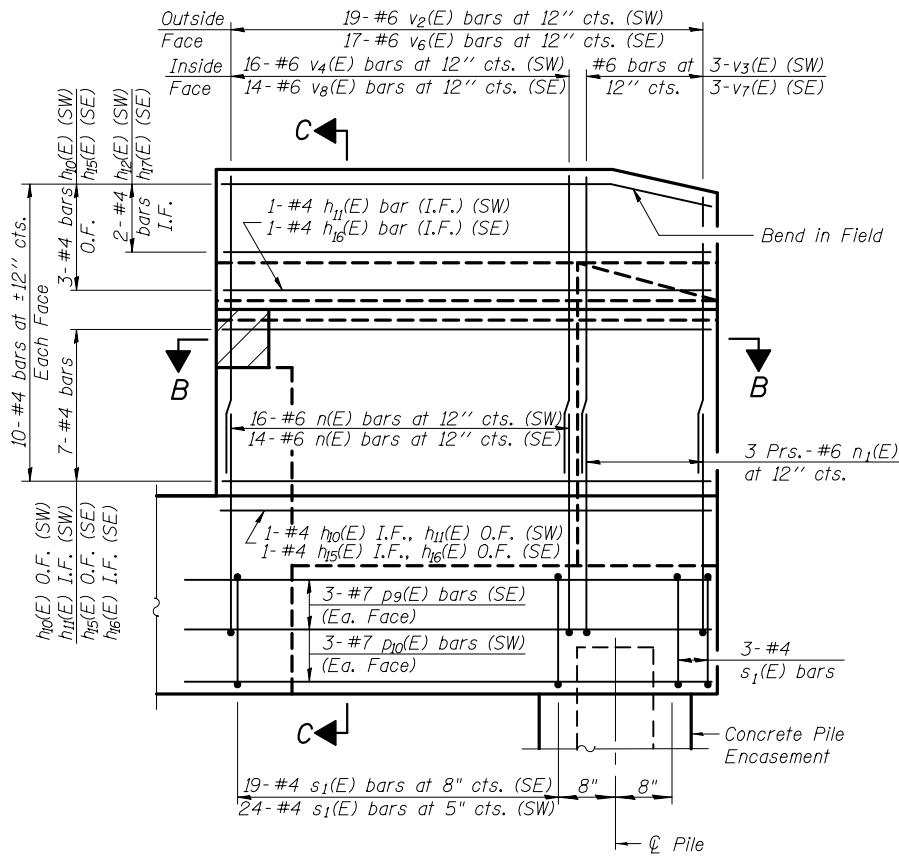


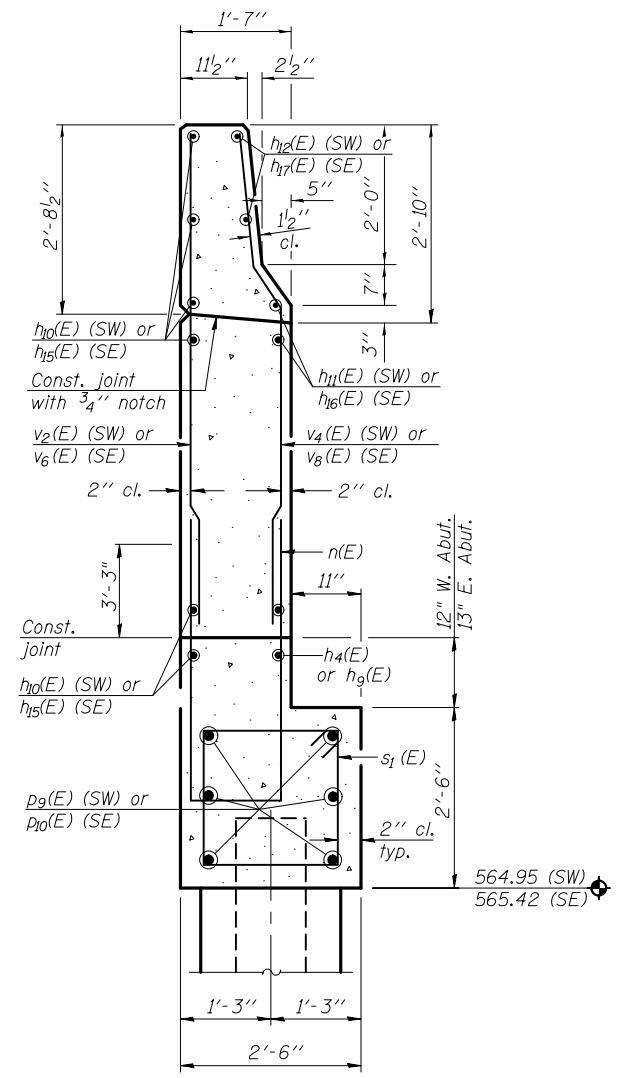
STATE OF ILLINOIS
DEPARTMENT OF TRANSPORTATION



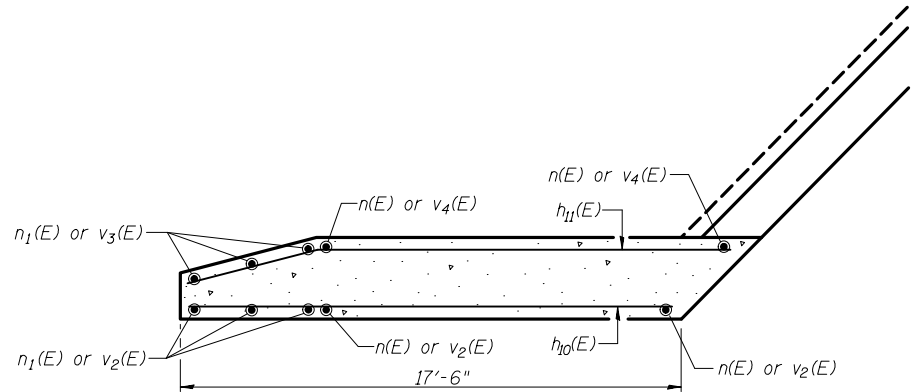
SOUTHWEST WINGWALL ELEVATION (SHOWN)
SOUTHEAST WINGWALL ELEVATION (SIMILAR)
Showing Dimensions



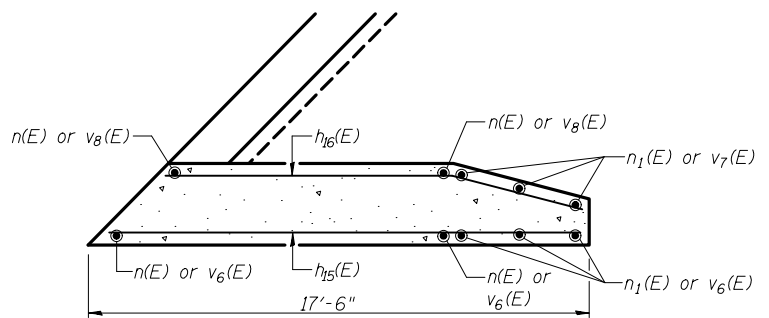
SOUTHEAST WING WALL ELEVATION (SHOWN)
SOUTHWEST WING WALL ELEVATION (SIMILAR)
Showing Reinforcement



SECTION C-C



SECTION B-B



SECTION B-B

Notes:
Quantity of concrete in end post included with Concrete Superstructure on sheet 11 of 33.
For Concrete Encasement details, see sheet 31 of 33.

ABUTMENT
SOUTH WING WALLS
STRUCTURE NO. 032-0119

DESIGNED	- JSI/MAJ/JFS
CHECKED	- JFS/MJB
DRAWN	- MLB/JLP
CHECKED	- JFS/MJB

Foth
Foth Infrastructure & Environment, LLC
7500 North Harker Drive
Peoria, IL 61615
Phone: 309-691-5300 Fax: 309-691-1892
Illinois Registration Number 184.004913

SHEET NO. 25 33 SHEETS	F.A.U. RTE.	SECTION	COUNTY	TOTAL SHEETS	SHEET NO.
	400	(32,47-4) HBR-2	GRUNDY	143	86
S.N. 032-0119			CONTRACT NO. 66873		
FED. ROAD DIST. NO.		ILLINOIS FED. AID PROJECT			

FILES