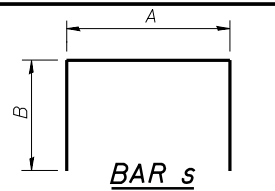


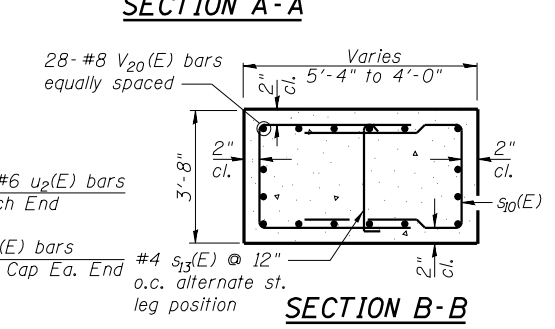
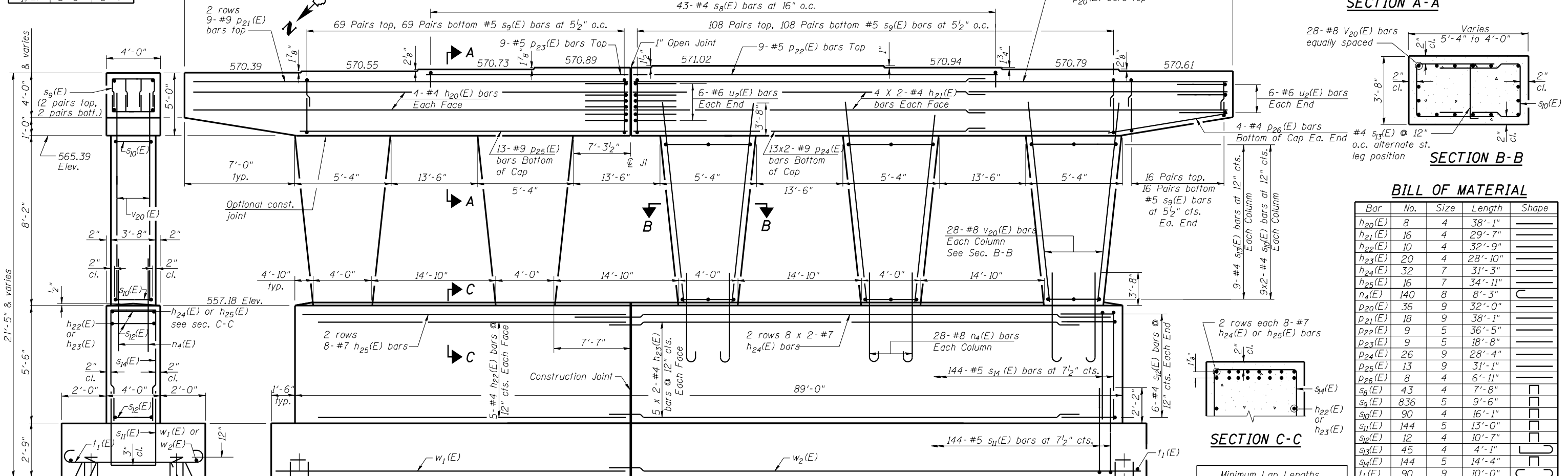
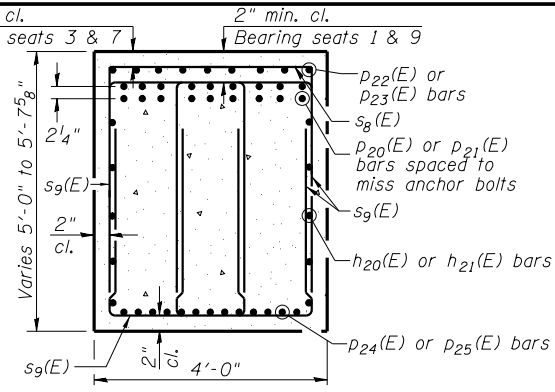
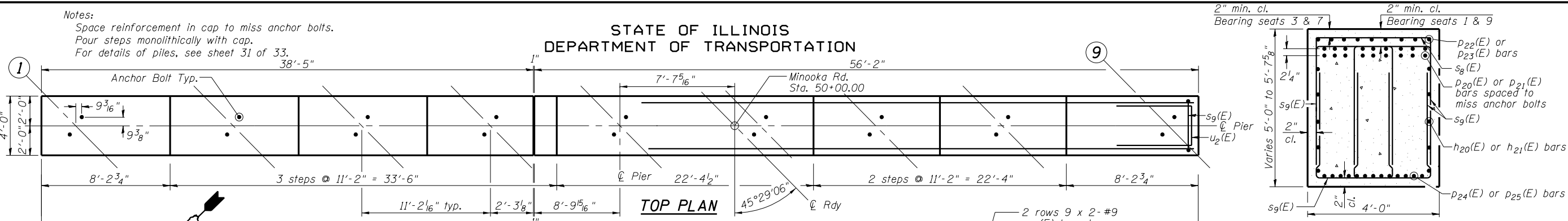
STATE OF ILLINOIS
DEPARTMENT OF TRANSPORTATION

Notes:
Space reinforcement in cap to miss anchor bolts.
Pour steps monolithically with cap.
For details of piles, see sheet 31 of 33.



BAR S
A & B DIMENSIONS

Bar	A	B
s ₈ (E)	3'-8"	2'-0"
s ₉ (E)	2'-6"	3'-6"
s ₁₀ (E)	3'-4"	3'-7"
s ₁₁ (E)	3'-8"	4'-8"
s ₁₂ (E)	3'-7"	3'-6"
s ₁₄ (E)	3'-8"	5'-4"



BILL OF MATERIAL

Bar	No.	Size	Length	Shape
h ₂₀ (E)	8	4	38'-1"	
h ₂₁ (E)	16	4	29'-7"	
h ₂₂ (E)	10	4	32'-9"	
h ₂₃ (E)	20	4	28'-10"	
h ₂₄ (E)	32	7	31'-3"	
h ₂₅ (E)	16	7	34'-11"	
n ₄ (E)	140	8	8'-3"	
p ₂₀ (E)	36	9	32'-0"	
p ₂₁ (E)	18	9	38'-1"	
p ₂₂ (E)	9	5	36'-5"	
p ₂₃ (E)	9	5	18'-8"	
p ₂₄ (E)	26	9	28'-4"	
p ₂₅ (E)	13	9	31'-1"	
p ₂₆ (E)	8	4	6'-11"	
s ₈ (E)	43	4	7'-8"	
s ₉ (E)	836	5	9'-6"	
s ₁₀ (E)	90	4	16'-1"	
s ₁₁ (E)	144	5	13'-0"	
s ₁₂ (E)	12	4	10'-7"	
s ₁₃ (E)	45	4	4'-1"	
s ₁₄ (E)	144	5	14'-4"	
t ₁ (E)	90	9	10'-0"	
u ₂ (E)	24	6	10'-9"	
v ₂₀ (E)	140	8	11'-10"	
w ₁ (E)	18	6	36'-5"	
w ₂ (E)	36	6	29'-8"	
Braced Excavation		Cu. Yd.	349	
Concrete Structures		Cu. Yd.	248.1	
Reinforcement Bars, Epoxy Coated		Pound	42,320	
Furnishing Steel Piles HP 10 x 42		Foot	1003	
Driving Piles		Foot	1003	
Test Pile Steel HP 10 x 42		Each	1	

SECTION C-C

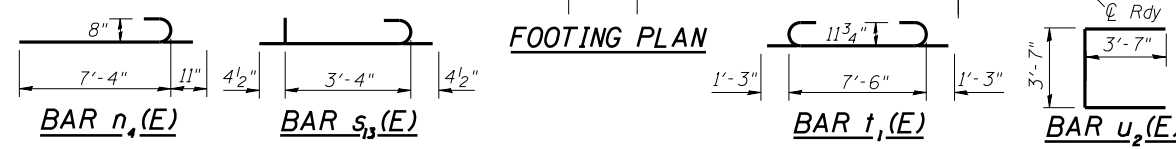
2 rows each 8-#7 h₂₄(E) or h₂₅(E) bars

Minimum Lap Lengths		
Bar Size	Length	Top Bar
#4	1'-8"	
#4 Top Bar	2'-5"	h ₂₁ , h ₂₃
#5	2'-2"	
#6	2'-7"	
#7	3'-5"	
#7 Top Bar	4'-10"	h ₂₄
#8	4'-6"	
#9	5'-9"	
#9 Top Bar	8'-1"	p ₂₀

END VIEW PILE DATA
Type: HP10X42
Nominal Required Bearing: 282 k
Factored Resistance Available: 141 k
Est. Length: 17'
No. Production Piles: 59
No. Test Piles: 1**

DESIGNED	- JSI/MAJ/JFS
CHECKED	- JFS/MJB
DRAWN	- MLB/JLP
CHECKED	- JFS/MJB

**Test pile must be one of the 24 north most piles.



Foth
Foth Infrastructure & Environment, LLC
7500 North Harker Drive
Peoria, IL 61615
Phone: 309-691-5300 Fax: 309-691-1892
Illinois Registration Number 184,004913

SHEET NO. 26
33 SHEETS

F.A.U RTE.	SECTION	COUNTY	TOTAL SHEETS	SHEET NO.
400	(32,47-4) HBR-2	GRUNDY	143	87
S.N. 032-0119		CONTRACT NO. 66873		
FED. ROAD DIST. NO.		ILLINOIS FED. AID PROJECT		

**PIER
STRUCTURE NO. 032-0119**