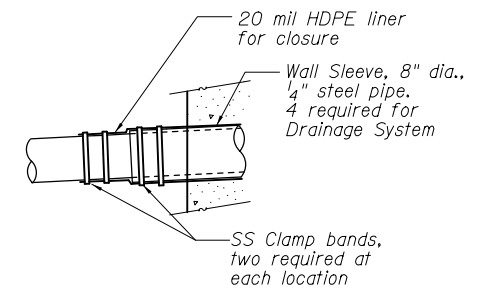
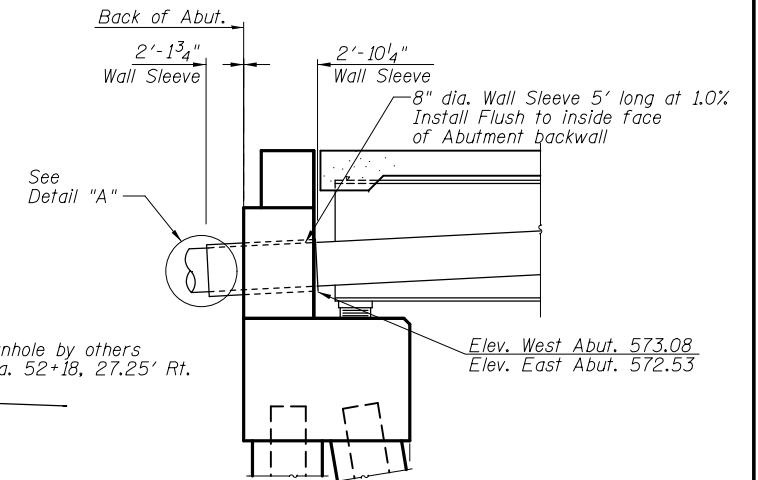
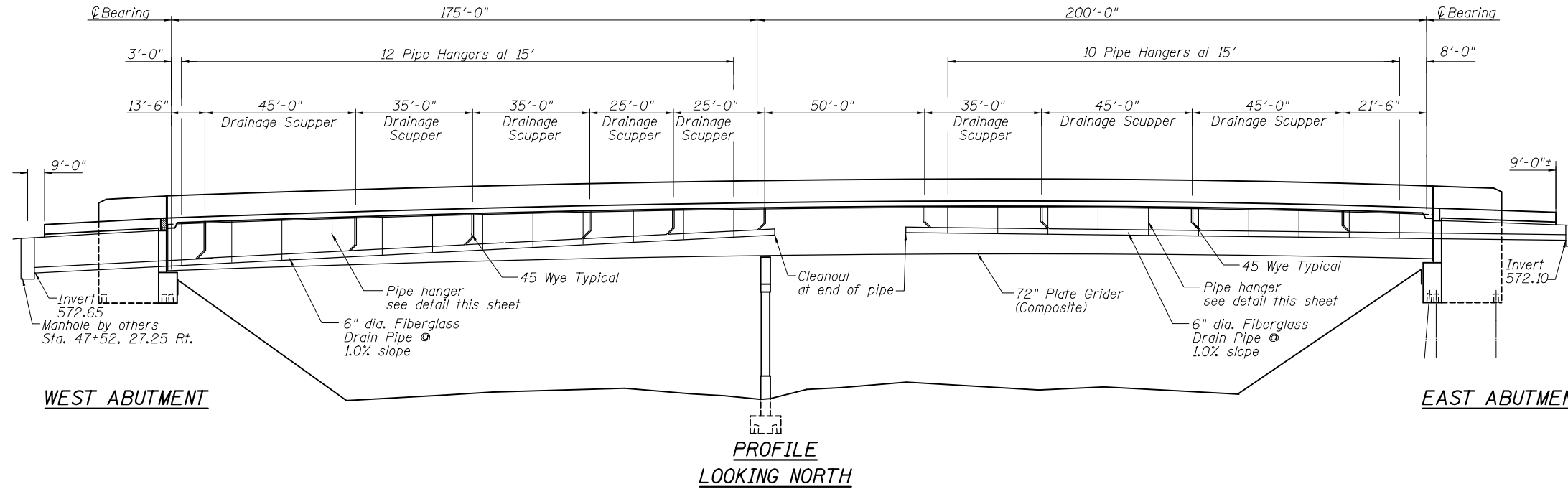
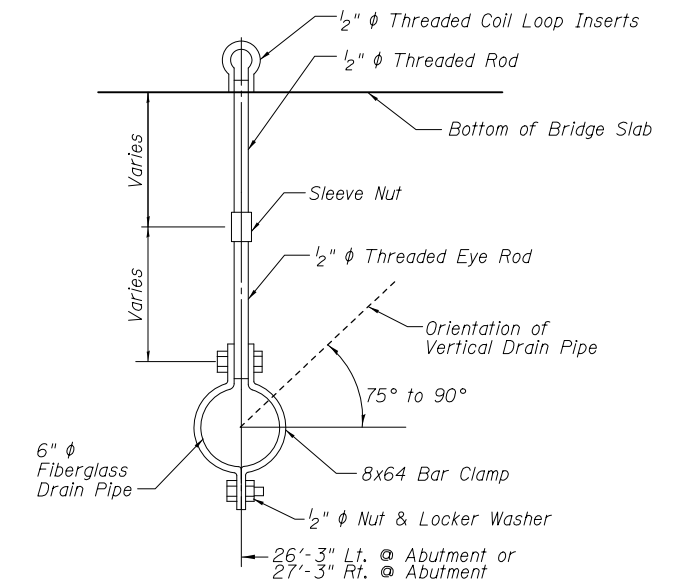
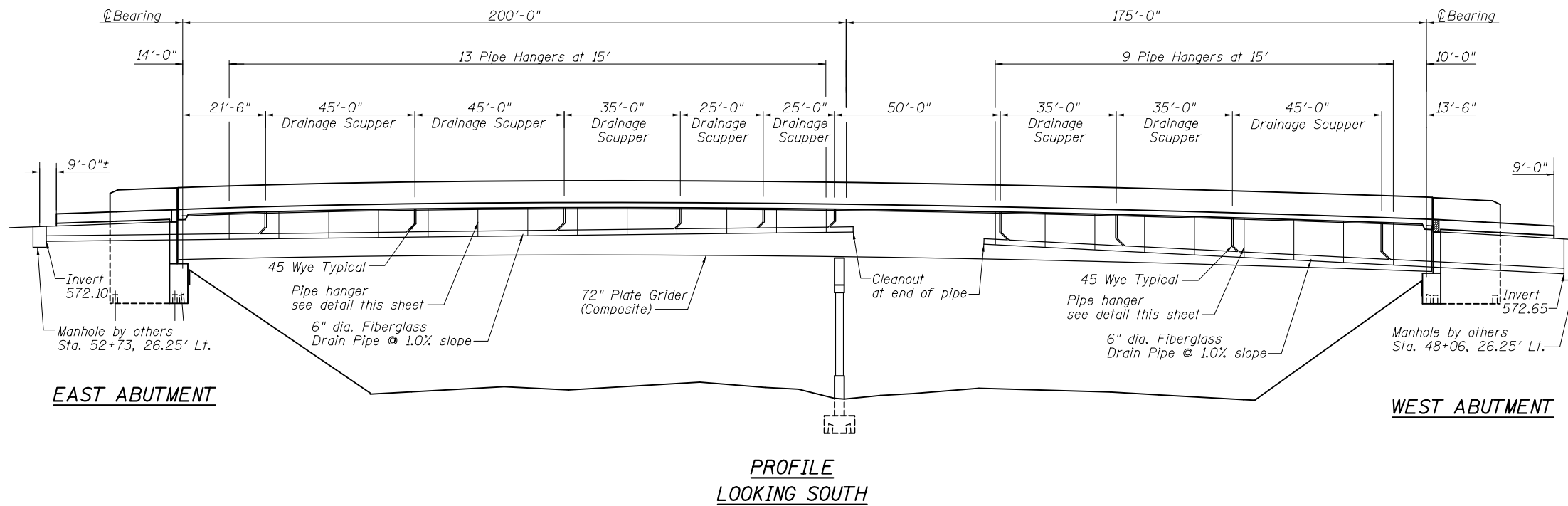


STATE OF ILLINOIS
DEPARTMENT OF TRANSPORTATION



DETAIL "A"
HDPE LINER CLOSURE DETAIL



PIPE HANGER DETAIL

- Notes:
1. See General Plan and Elevation sheet for plan dimensions and locations of scuppers.
 2. The cost of coil loop inserts and rebar is included in the price of Pay Item "Drainage System".
 3. The drainage pipe layout shown is only schematic (not to scale) and the contractor shall submit a detailed layout to the engineer for approval. The layout shall not interfere with minimum vertical clearance or with pipe hangers.
 4. The exterior surfaces of the pipe drain shall be painted according to Section 506 of the Standard Specifications. The exterior surfaces of the drain pipe shall be cleaned and given a washcoat pretreatment in accordance with Steel Structures Painting Council's Specification SSPC-SP1 & SSPC Paint 21 prior to painting. Fiberglass pipe shall conform to ASTM D2996, with short-time rupture strength hoop tensile stress of 200 MPa minimum. The surface of the fiberglass pipe shall be free of bond inhibiting agents.
 5. Backfill excavation for the 6" drain pipe under the Bridge Approach slab with CLSM from the face of the manhole to the Porous Granular Embankment (Special) behind the abutment. Cost of pipe, excavation and CLSM included in the Pay Item "Drainage System."

BILL OF MATERIAL

Item	Unit	Total
Drainage System	L. Sum	1

DRAINAGE SYSTEM
STRUCTURE NO. 032-0119

DESIGNED	- JSI/MAJ/JFS
CHECKED	- JFS/MJB
DRAWN	- MLB/JLP
CHECKED	- JFS/MJB

Foth
Foth Infrastructure & Environment, LLC
7500 North Harker Drive
Peoria, IL 61615
Phone: 309-691-5300 Fax: 309-691-1892
Illinois Registration Number 184.004913

SHEET NO. 29 33 SHEETS	F.A.U. RTE.	SECTION	COUNTY	TOTAL SHEETS	SHEET NO.
	400	(32,47-4) HBR-2	GRUNDY	143	90
		S.N. 032-0119	CONTRACT NO. 66873		
FED. ROAD DIST. NO.		ILLINOIS FED. AID PROJECT			

\$FILES