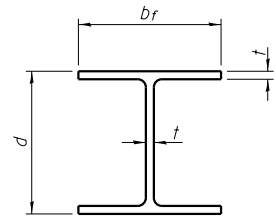
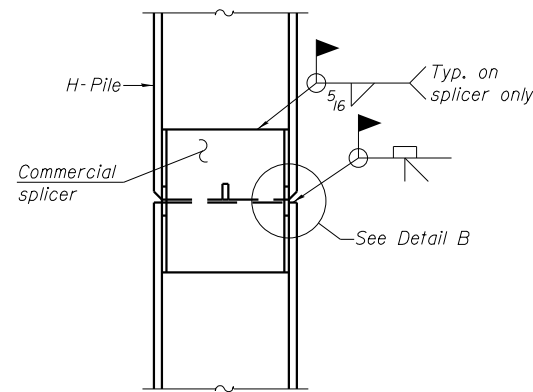


STATE OF ILLINOIS  
DEPARTMENT OF TRANSPORTATION

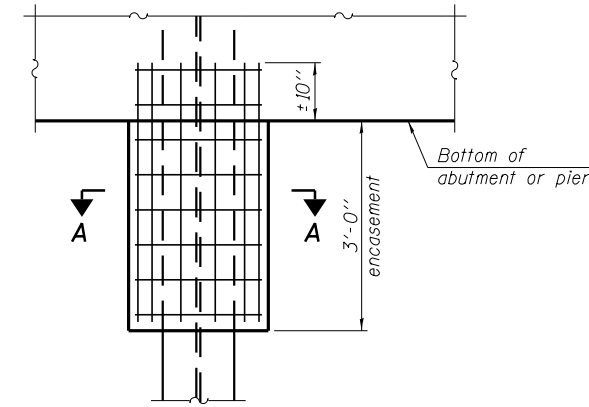


**STEEL PILE TABLE**

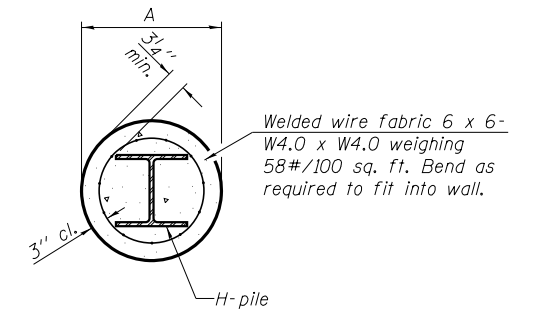
Designation	Depth d	Flange width b <sub>f</sub>	Web and Flange thickness t	Encasement diameter A
HP 14x117	14 1/4"	14 7/8"	13/16"	30"
x102	14"	14 3/4"	1/16"	30"
x89	13 7/8"	14 3/4"	5/8"	30"
x73	13 5/8"	14 5/8"	1/2"	30"
HP 12x84	12 1/4"	12 1/4"	1/16"	24"
x74	12 3/8"	12 1/4"	5/8"	24"
x63	12"	12 1/8"	1/2"	24"
x53	11 3/4"	12"	7/16"	24"
HP 10x57	10"	10 1/4"	9/16"	24"
x42	9 3/4"	10 1/8"	7/16"	24"
HP 8x36	8"	8 1/8"	7/16"	18"



**ELEVATION**



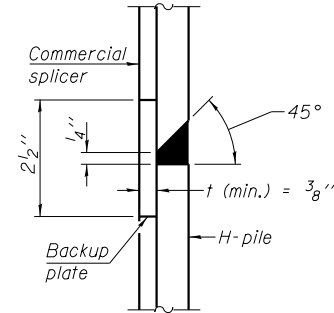
**ELEVATION**



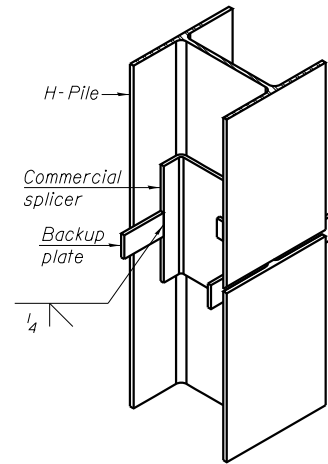
**SECTION A-A**

Note:  
Forms for encasement may be omitted when soil conditions permit.

**PILE ENCASEMENT**

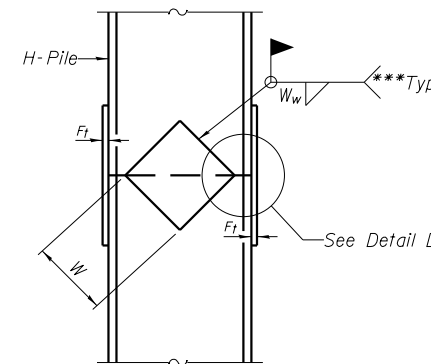


**DETAIL "B"**

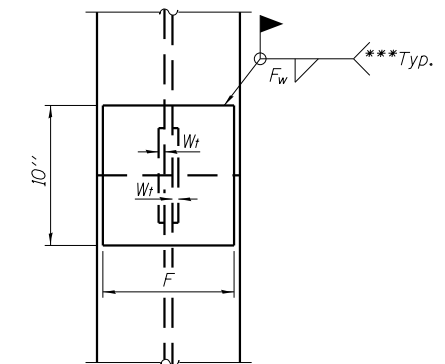


**ISOMETRIC VIEW**

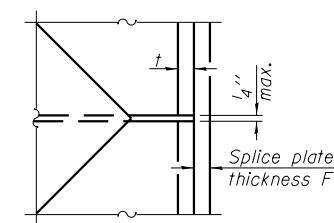
**WELDED COMMERCIAL SPLICE**



**ELEVATION**



**END VIEW**



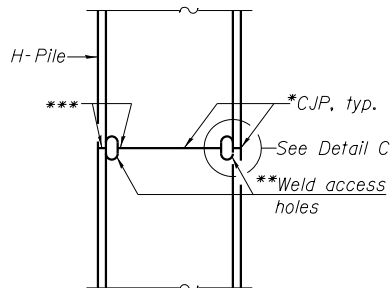
**DETAIL D**

Designation	F	F <sub>t</sub>	F <sub>w</sub>	W	W <sub>t</sub>	W <sub>w</sub>
HP 14x117	12 1/2"	1"	7/8"	7 3/4"	5 1/2"	1/2"
x102	12 1/2"	7/8"	3/4"	7 3/4"	5 1/2"	1/2"
x89	12 1/2"	3/4"	1/16"	7 3/4"	5 1/2"	1/2"
x73	12 1/2"	5/8"	9/16"	7 3/4"	5 1/2"	1/2"
HP 12x84	10"	7/8"	1/16"	6 1/2"	5 1/2"	1/2"
x74	10"	7/8"	1/16"	6 1/2"	5 1/2"	1/2"
x63	10"	5/8"	1/2"	6 1/2"	1/2"	3/8"
x53	10"	5/8"	1/2"	6 1/2"	1/2"	3/8"
HP 10x57	8"	3/4"	9/16"	5 1/4"	1/2"	3/8"
x42	8"	5/8"	9/16"	5 1/4"	1/2"	3/8"
HP 8x36	7"	5/8"	7/16"	4 1/4"	1/2"	3/8"

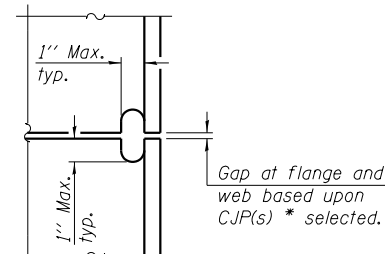
**WELDED PLATE FIELD SPLICE**

**HP PILE DETAILS  
STRUCTURE NO. 032-0119**

Note:  
The steel H-piles shall be according to AASHTO M270 Grade 50.



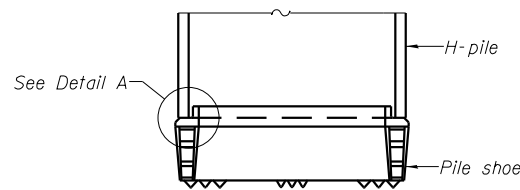
**ELEVATION**



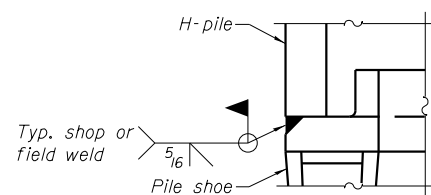
**DETAIL C**

**COMPLETE PENETRATION WELD SPLICE**

- \* Use joint conforming to Figure 3.4 in AWS D1.1, Structure Welding Code - Steel.
- \*\* Preparation per Fig. 5.2 in AWS D1.1, Structure Welding Code - Steel.
- \*\*\* Interrupt welds 1/4" from end of each pile.



**ELEVATION**



**DETAIL A**

**H-PILE SHOE ATTACHMENT**

DESIGNED - JSI/MAJ/JFS
CHECKED - JFS/MJB
DRAWN - MLB/JLP
CHECKED - JFS/MJB

F-HP 10-1-08

c:\pwworking\dwg\duncan\bd018136933-HP PILE DETAILS.dwg

**Foth**  
Foth Infrastructure & Environment, LLC  
7500 North Harker Drive  
Peoria, IL 61615  
Phone: 309-691-5300 Fax: 309-691-1892  
Illinois Registration Number 184,004913

SHEET NO. 31 33 SHEETS	F.A.U RTE.	SECTION	COUNTY	TOTAL SHEETS	SHEET NO.
	400	(32,47-4) HBR-2	GRUNDY	143	92
S.N. 032-0119		CONTRACT NO. 66873			
FED. ROAD DIST. NO.		ILLINOIS FED. AID PROJECT			