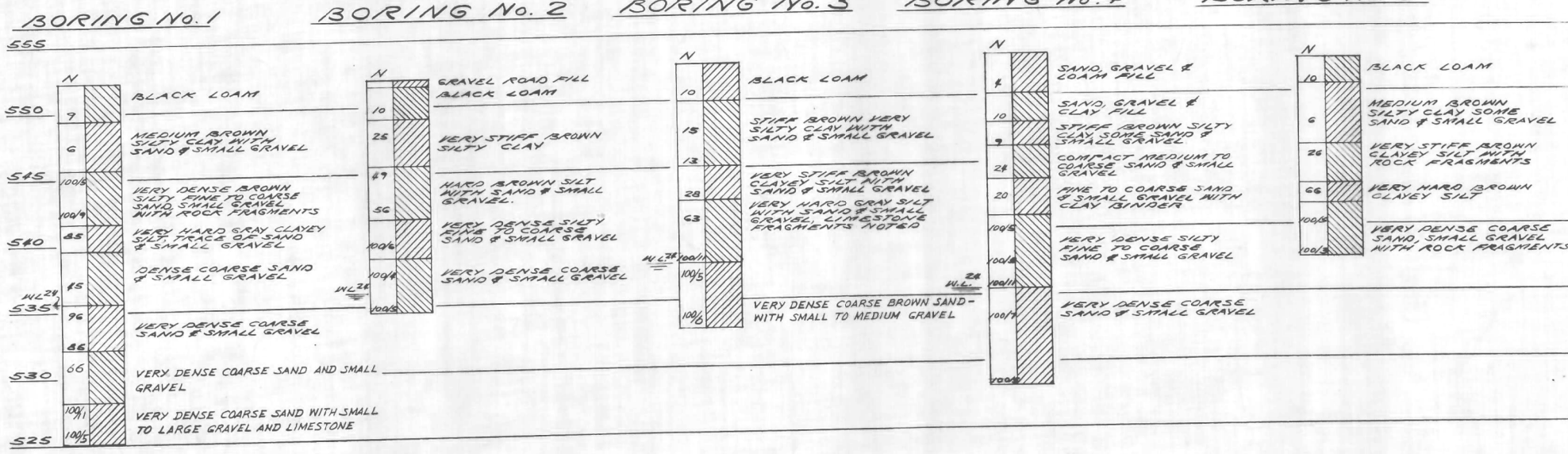


SOIL TEST BORINGS

BILL OF MATERIAL- STATION 1574+07.48



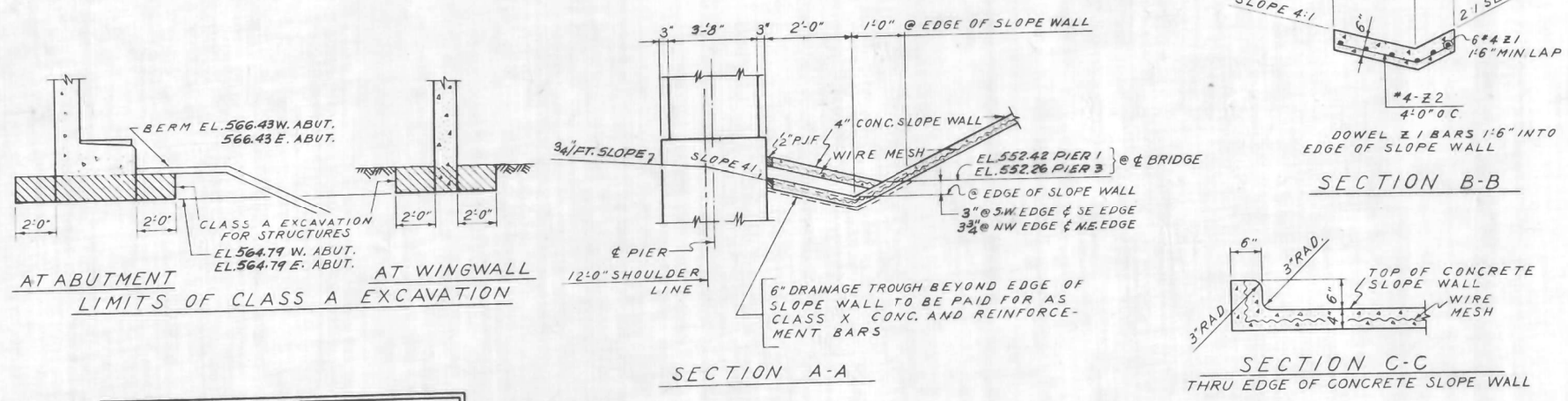
ITEM	UNIT	QUANTITY		
		SUPER	SUB	TOTAL
CLASS X CONCRETE, STRUCTURES	CU YDS	275.7	413.6	698.9
HANDRAIL CONCRETE	CU YDS.	—	2.0	2.0
REINFORCEMENT BARS	LBS.	52,180	45,820	98,000
FURNISHING AND ERECTING STRUCTURAL STEEL	LBS.	12,850	—	12,850
FURNISHING AND ERECTING METAL HANDRAIL	LIN. FT.	591	—	591
NAME PLATES	EACH	—	2	2
FURNISHING AND ERECTING PRECAST PRESTRESSED CONCRETE I-BEAMS, 48 IN.	LIN. FT.	1,534	—	1,534
TEST PILES (CONCRETE)	EACH	—	2	2
FURNISHING CONCRETE PILES	LIN. FT.	—	312	312
DRIVING CONCRETE PILES	LIN. FT.	—	312	312
CLASS A EXCAVATION FOR STRUCTURES	CU YDS	—	650	650
DRIVING TIMBER PILES	LIN. FT.	—	96	96
FURNISHING CREOSOTED PILES, 20' TO 38'	LIN. FT.	—	96	96
SLOPE WALL, 4 IN.	SQ. YD.	—	420	420
METAL SHOES FOR TIMBER PILES	EACH	—	4	4

NOTE: THESE ITEMS MARKED THUS * INCLUDE 9.6 CU YDS. CLASS X CONCRETE AND 830 LBS. REINFORCEMENT BARS FOR DRAINAGE TROUGH.

GENERAL NOTES

CLASS X CONCRETE SHALL BE USED THROUGHOUT EXCEPT FOR CONCRETE IN HANDRAILS AND PRECAST I-BEAMS.
 HANDRAIL CONCRETE SHALL BE USED IN HANDRAIL PORTION OF WINGWALLS AS SHOWN. FOR CONCRETE IN PRECAST I-BEAMS SEE SPECIAL PROVISIONS.
 ALL CONCRETE SHALL BE CAST IN PLACE EXCEPT FOR THE PRECAST PRESTRESSED CONCRETE I-BEAMS.
 THE CONCRETE FLOOR SLAB FOR EACH SPAN SHALL BE PLACED IN ONE CONTINUOUS OPERATION BETWEEN CONSTRUCTION JOINTS SHOWN AND SHALL BE FINISHED IN ACCORDANCE WITH ARTICLE 51.17 OF THE STANDARD SPECIFICATIONS.
 ALL STEEL SHALL BE STRUCTURAL STEEL EXCEPT AS OTHERWISE NOTED.
 BRONZE EXPANSION PLATES SHALL CONFORM TO A.S.T.M. SPECIFICATION B100, ALLOY 1, AND SHALL HAVE GRAPHITE INSERTS INSTALLED IN THE SLIDING SURFACE AS MANUFACTURED BY MERRIMAN BROS. INC., BOSTON, MASS., OR EQUAL.
 ALL STEEL BEARING PLATES, GRAPHITE BRONZE EXPANSION PLATES, LEAD PLATES AND ANCHOR BOLTS SHALL BE FABRICATED AND SET IN ACCORDANCE WITH ARTICLE 51.15 OF THE STANDARD SPECIFICATION AND ARE INCLUDED IN QUANTITY OF STRUCTURAL STEEL. ESTIMATED WEIGHT = 5,700 LBS.
 STEEL EXPANSION DEVICES AT THE PIER AND ABUTMENTS SHALL BE FABRICATED AND SET IN ACCORDANCE WITH ARTICLE 51.13 (G) OF THE STANDARD SPECIFICATIONS AND ARE INCLUDED IN QUANTITY OF STRUCTURAL STEEL. ESTIMATED WEIGHT = 7,150 LBS.
 STRUCTURAL STEEL SHALL BE PAINTED ONE SHOP COAT OF RED LEAD PAINT AND TWO FIELD COATS OF ALUMINUM PAINT IN ACCORDANCE WITH SECTION 56 OF THE STANDARD SPECIFICATIONS EXCEPT AS OTHERWISE SPECIFIED ON THE PLANS. ALL PAINT SHALL BE FURNISHED AND APPLIED BY THE CONTRACTOR.
 THE CONTRACTOR SHALL DRIVE ONE CONCRETE TEST PILE IN A PERMANENT LOCATION AT EACH ABUTMENT AS DIRECTED BY THE ENGINEER BEFORE ORDERING THE REMAINDER OF THE CONCRETE PILES.
 PIER FOOTING TO BE FOUNDED ON THE VERY DENSE COARSE SAND STRATA, OR UPON A MATERIAL HAVING A SAFE BEARING CAPACITY OF 7,000 LBS. PER SQ. FT.
 JOINTS IN DECK SLAB NOTED ON PLANS TO BE FILLED WITH "PARA-PLASTIC OR EQUAL" SHALL BE FILLED WITH JOINT SEALER CONFORMING TO FEDERAL SPECIFICATION FOR SEALER; HOT POURED TYPE.
 FOR JOINTS IN CONCRETE SS-S-164," SHOP INSPECTION OF STRUCTURAL STEEL AND PRECAST PRESTRESSED I-BEAMS BY ILLINOIS DIVISION OF HIGHWAYS

- NOTE:
- WATER LEVELS (N.L.). FIGURE INDICATES TIME OF READING (HOURS) AFTER COMPLETION OF BORING. WATER LEVELS INDICATED ARE THOSE OBSERVED WHEN BORINGS WERE MADE, OR AS NOTED. POROSITY OF THE SOIL STRATA, VARIATIONS OF RAINFALL, SITE TOPOGRAPHY, ETC., MAY CAUSE CHANGES IN THESE LEVELS.
 - FIGURES IN COLUMN MARKED "N" INDICATE NUMBER OF BLOWS REQUIRED TO DRIVE SAMPLING PIPE ONE FOOT USING 140 LBS. WEIGHT FALLING 30 INCHES.
 - BORING DATA ARE SHOWN ONLY AS A GUIDE FOR BIDDERS IN ESTIMATING SOIL CONDITIONS WHICH MAY BE ENCOUNTERED IN THE WORK. FOR LOCATION OF BORINGS SEE SHEET 1.



STATION 1574+07.48
 BUILT 195 BY
 STATE OF ILLINOIS
 F.A.I. RT. 80 SEC. (32,47)-4
 F.A. PROJ. I-80-4(2)
 LOADING H15-S12

SEE STATE OF ILLINOIS STD-2113
 NAME PLATES EACH 2
 LETTERING FOR NAME PLATES

BILL OF MATERIAL-DRAINAGE TROUGHS

ITEM	UNIT	TOTAL
CLASS X CONCRETE	CU YDS	9.6
REINFORCEMENT BARS	LBS	830

BORINGS, NAME PLATES, GENERAL NOTES,
 QUANTITIES AND EXCAVATION
 GRADE SEPARATION
 CROSS ROAD
 OVER FAI ROUTE 80
 F.A. PROJECT
 F.A.I. ROUTE 80 SECTION (32,47)-4
 GRUNDY-KENDALL COUNTY
 STATION 1574+07.48

ALFRED BENESCH & ASSOCIATES CONSULTING ENGINEERS
 10 SOUTH WABASH AVENUE 632 CHICAGO, ILLINOIS