

STATE OF ILLINOIS
DEPARTMENT OF TRANSPORTATION
DIVISION OF HIGHWAYS

**PROPOSED
HIGHWAY PLANS**

F.A.I. ROUTE 57 (I-57)
SECTION (140)BR, BR-1 & I (1) I
PROJECT: NHPP-0057(305)
ROADWAY CROSSOVERS
KANKAKEE COUNTY

C-93-059-12

F.A.I. RTE.	SECTION	COUNTY	TOTAL SHEETS	SHEET NO.
57	[(140)BR, BR-1 & I (1) I]	KANKAKEE	33	1
ILLINOIS			CONTRACT NO. 66B90	

#3341=34

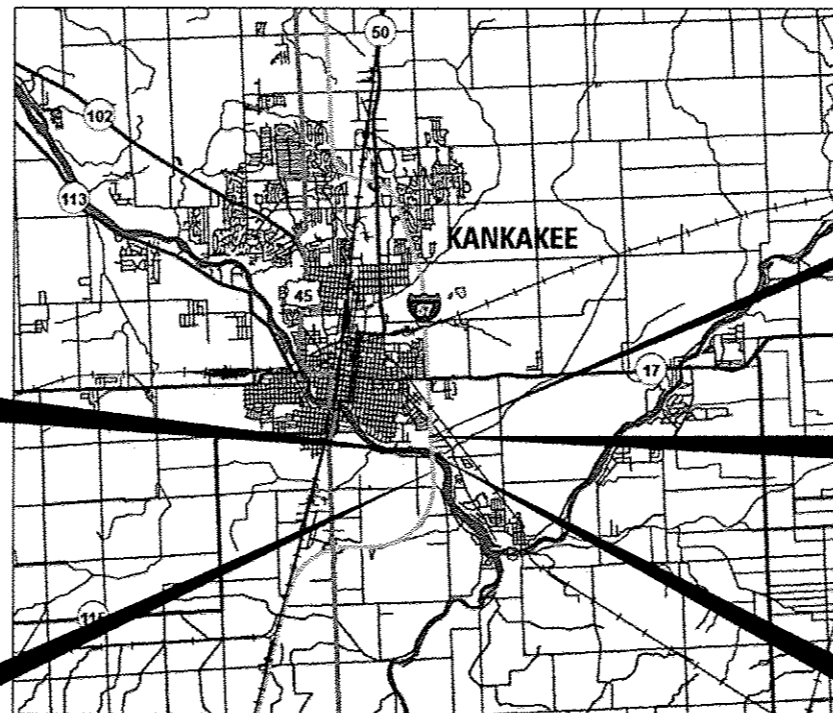
D-93-032-12

INDEX OF SHEETS

- 1 COVER SHEET
- 2 GENERAL NOTES, STANDARDS
- 3-5 SUMMARY OF QUANTITIES
- 6-8 TYPICAL SECTIONS
- 9 SCHEDULES
- 10 ALIGNMENT TIES & BENCHMARKS
- 11-14 PLAN SHEETS
- 15-16 PAVEMENT JOINT DETAILS
- 17-20 PROFILE SHEETS
- 21-21A DETAILS
- 22-23 CROSS SECTIONS



ROAD CLASSIFICATION: INTERSTATE
2012 ADT = 21500
P.V. = 70.4% S.U. = 3.1% M.U. = 26.5%



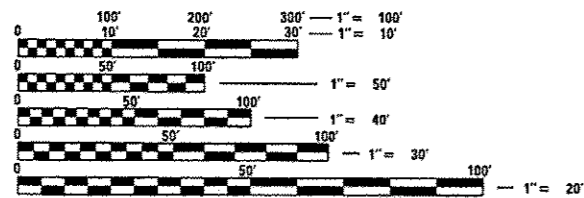
BEGIN PROJECT
STA. 235 + 04

CROSSOVER #2
BEGIN STA. 273 + 74
END STA. 280 + 66.88

CROSSOVER #1
BEGIN STA. 235 + 04
END STA. 242 + 76

END PROJECT
STA. 281 + 38

BRIDGE OMISSION
S.N. 046-0003 NB
S.N. 046-0004 SB



FULL SIZE PLANS HAVE BEEN PREPARED USING STANDARD ENGINEERING SCALES. REDUCED SIZED PLANS WILL NOT CONFORM TO STANDARD SCALES. IN MAKING MEASUREMENTS ON REDUCED PLANS, THE ABOVE SCALES MAY BE USED.

J.U.L.I.E.
JOINT UTILITY LOCATION INFORMATION FOR EXCAVATION
1-800-892-0123
OR 811

PROJECT ENGINEER: JOE KANNEL, P.E.
UNIT CHIEF: SCOTT A. FERGUSON, P.E.

CONTRACT NO. 66B90

GROSS LENGTH = 4678 FT. = .89 MILE
NET LENGTH = 3801 FT. = .72 MILE

STATE OF ILLINOIS
DEPARTMENT OF TRANSPORTATION
DIVISION OF HIGHWAYS

SUBMITTED 3-22 2013
Paul A. Laeber
DEPUTY DIRECTOR OF HIGHWAYS, REGION ENGINEER

May 10 2013
John D. Baranzelli, P.E.
ENGINEER OF DESIGN AND ENVIRONMENT

May 10 2013
Orner Osman, P.E.
DIRECTOR OF HIGHWAYS, CHIEF ENGINEER

PRINTED BY THE AUTHORITY
OF THE STATE OF ILLINOIS

Rev.