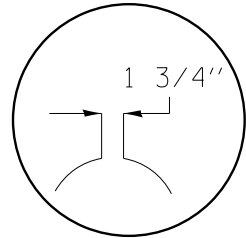
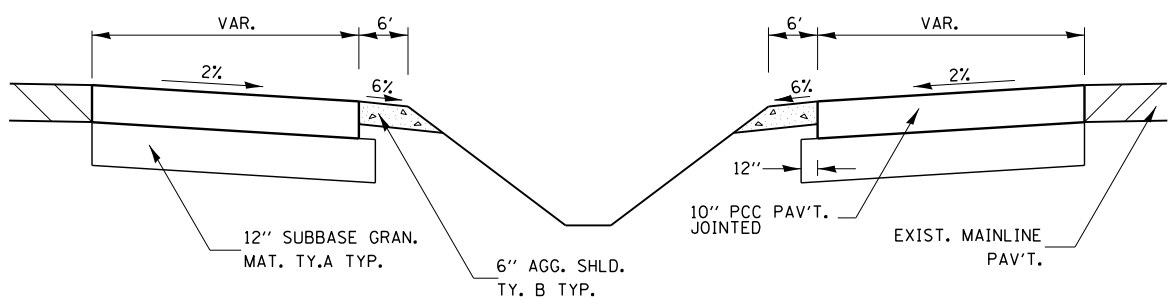


SECTION A-A

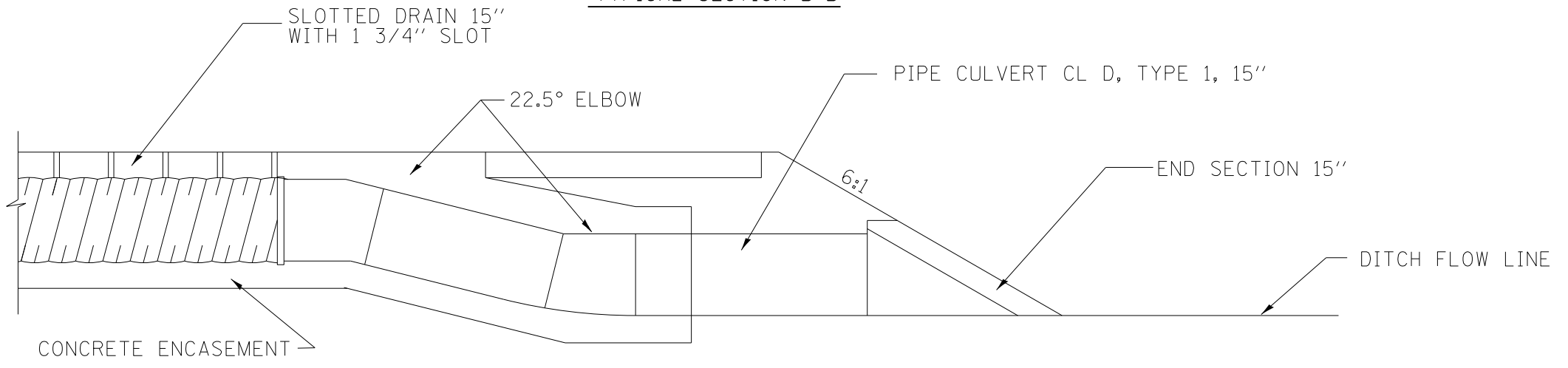


DETAIL A

NOTE: ALL BARS TO BE EPOXY COATED. SEE PLANS FOR DRAIN INVERTS. SEE SPECIAL PROVISIONS FOR MATERIAL AND CONSTRUCTION REQUIREMENTS.

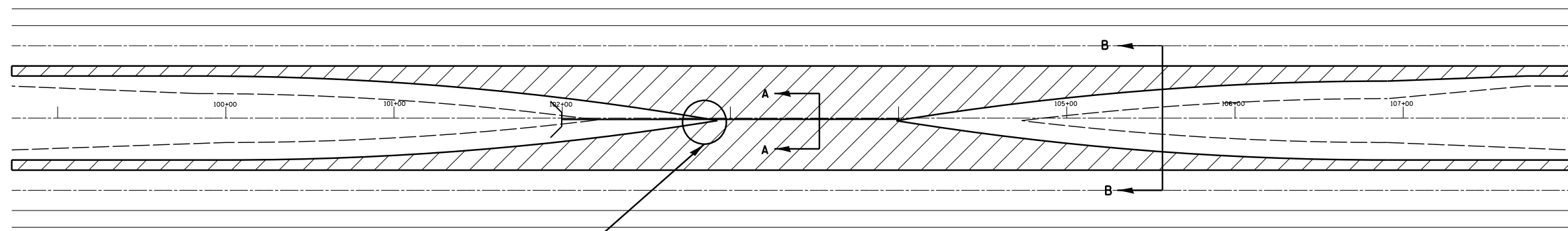


TYPICAL SECTION B-B



SLOTTED DRAIN TRANSITION DETAIL

(SEE SPECIAL PROVISION FOR BASIS OF PAYMENT)



SEE TRANSITION DETAIL

SOUTH CROSSOVER DETAIL

GENERAL NOTES:

CONSTRUCTION OF MEDIAN CROSSOVER SHALL CONFORM TO THE REQUIREMENTS OF CURRENT STANDARD SPECIFICATIONS.

PRICE BID FOR CONTRACT ITEMS SHALL BE CONSIDERED FULL COMPENSATION FOR FURNISHING ALL NECESSARY MATERIALS AND LABOR TO CONSTRUCT THE MEDIAN CROSSOVER AS DETAILED.

THIS WORK WILL BE PAID FOR AT THE CONTRACT UNIT PRICE PER FOOT FOR "SLOTTED DRAIN 15" WITH 1 3/4" SLOT", AND SHALL INCLUDE ELBOWS, DRILLING HOLES IN GRATING, SUPPLYING AND PLACING A1 BARS, CONCRETE, GRATING AND END SECTIONS AS SPECIFIED ON PLANS.

FILE NAME =	USER NAME = mcfaddenka	DESIGNED -	REVISED -	STATE OF ILLINOIS DEPARTMENT OF TRANSPORTATION	MEDIAN CROSSOVER			F.A.I. RTE.	SECTION	COUNTY	TOTAL SHEETS	SHEET NO.
c:\pw\work\p1dot\mcfaddenka\0288989\0366890-shd-details.dgn		DRAWN -	REVISED -		57	[(140)BR, BR-1 & I(1)]	KANKAKEE	33	21			
PLOT SCALE = 100.0000' / in.		CHECKED -	REVISED -		CONTRACT NO. 66B90							
PLOT DATE = 3/22/2013		DATE -	REVISED -		SCALE:	SHEET NO. OF SHEETS	STA. TO STA.	FED. ROAD DIST. NO.	ILLINOIS FED. AID PROJECT			