

**STATE OF ILLINOIS**  
**DEPARTMENT OF TRANSPORTATION**  
**DIVISION OF HIGHWAYS**

**PROPOSED**  
**HIGHWAY PLANS**

**FAP ROUTE 311 (IL 71)**  
**D3 WING WALL REPAIR 2014-1**

**HEADWALL & WINGWALL REPLACEMENT**  
**KENDALL & LASALLE COUNTIES**

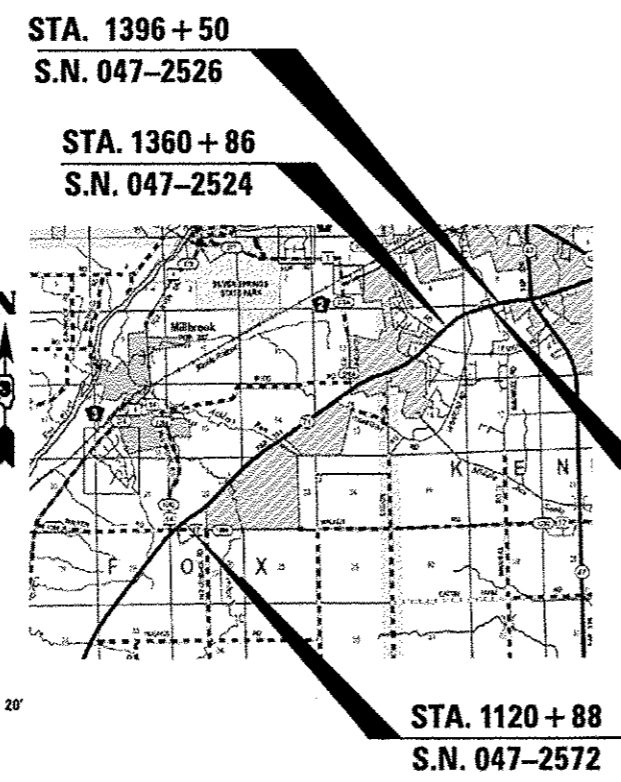
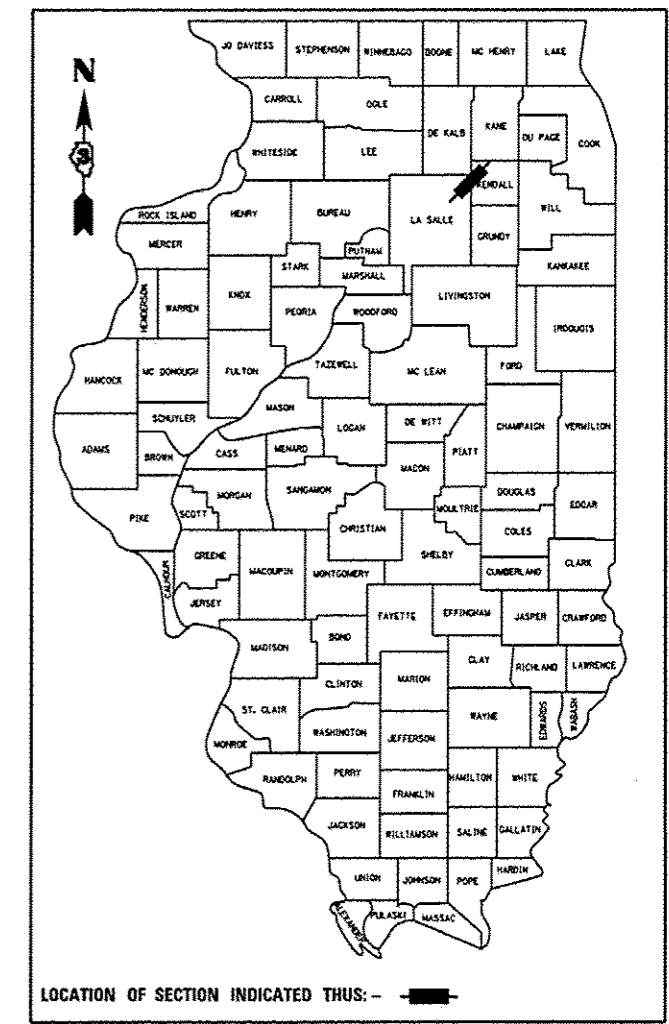
C-93-139-12

**INDEX**

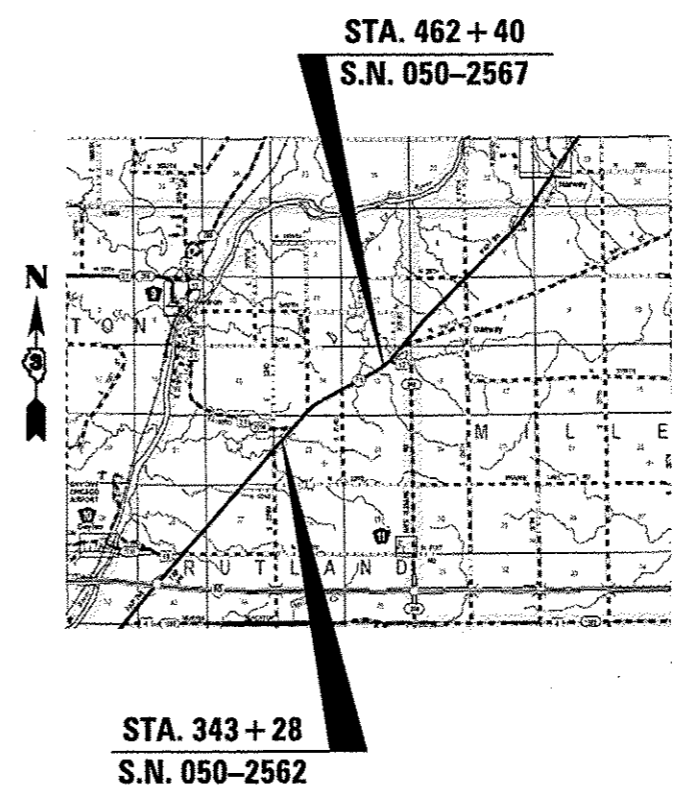
1. COVER SHEET
2. GENERAL NOTES
3. SUMMARY OF QUANTITIES
4. TYPICAL SECTIONS
- 5 - 6. SCHEDULES
- 7 - 11. LOCATION 1: S.N. 050-2562 AT STA. 343+28
- 12 - 17. LOCATION 2: S.N. 050-2567 AT STA. 462+40
- 18 - 23. LOCATION 3: S.N. 047-2572 AT STA. 1120+88
- 24 - 29. LOCATION 4: S.N. 047-2524 AT STA. 1360+86
- 30 - 35. LOCATION 5: S.N. 047-2525 AT STA. 1391+30
- 36 - 41. LOCATION 6: S.N. 047-2526 AT STA. 1396+50

**STANDARDS**

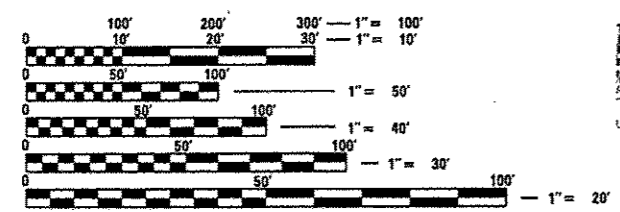
- 000001-06 STANDARD SYMBOLS, ABBREVIATIONS AND PATTERNS
- 001006 DECIMAL OF AN INCH AND OF A FOOT
- 01 - 630106 LONG-SPAN GUARDRAIL OVER CULVERT
- 280001-07 TEMPORARY EROSION CONTROL BARRIERS
- 635006-03 REFLECTOR AND TERMINAL MARKER PLACEMENT
- 635011-02 REFLECTOR MARKER AND MOUNTING DETAILS
- 701001-02 OFF-ROAD OPERATIONS, MULTILANE, MORE THAN 15' (4.5 M) AWAY FROM PAVEMENT EDGE
- 701006-04 OFF-ROAD OPERATIONS, MULTILANE, 15' (4.5 M) TO 24' (600 MM) FROM PAVEMENT EDGE
- 701201-04 LANE CLOSURE, 2L, 2W, DAY ONLY, FOR SPEEDS ≥ 45 MPH
- 701901-02 TRAFFIC CONTROL DEVICES
- 704001-07 TEMPORARY CONCRETE BARRIER



**KENDALL COUNTY**



**LASALLE COUNTY**



FULL SIZE PLANS HAVE BEEN PREPARED USING STANDARD ENGINEERING SCALES. REDUCED SIZED PLANS WILL NOT CONFORM TO STANDARD SCALES. IN MAKING MEASUREMENTS ON REDUCED PLANS, THE ABOVE SCALES MAY BE USED.

J.U.L.I.E.  
 JOINT UTILITY LOCATION INFORMATION FOR EXCAVATION  
 1-800-892-0123  
 OR 811

**PROJECT ENGINEER JOE KANNEL, P.E.**  
**UNIT CHEIF RON WOODSHANK**  
**TOWNSHIP VARIOUS**  
**CONTRACT NO. 66C40**

MINOR	
ARTERIAL	
FAP 311 (IL 71)	
2011	
ADT	6425
P.V.	90%
S.U.	3%
M.U.	7%

STATE OF ILLINOIS  
 DEPARTMENT OF TRANSPORTATION  
 DIVISION OF HIGHWAYS

SUBMITTED Paul A. Carter 4-3-2013  
 DEPUTY DIRECTOR OF HIGHWAYS, REGION ENGINEER

May 10 2013  
John D. Baranzelli, P.E.  
 acting ENGINEER OF DESIGN AND ENVIRONMENT

May 10 2013  
Omer Osman, P.E.  
 DIRECTOR OF HIGHWAYS, CHIEF ENGINEER

**PRINTED BY THE AUTHORITY**  
**OF THE STATE OF ILLINOIS**