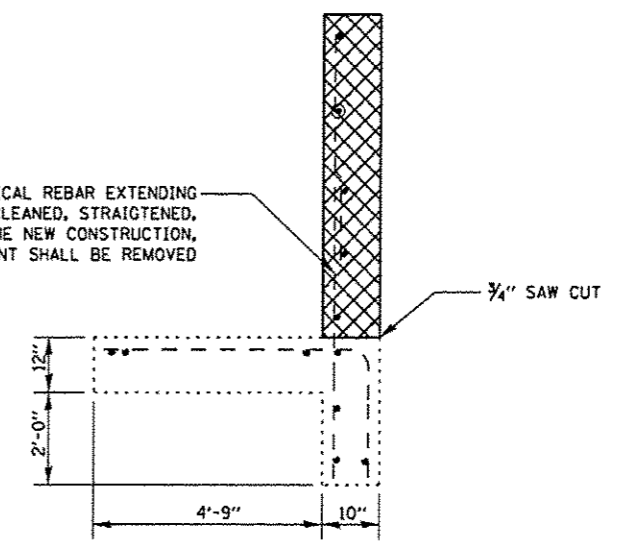
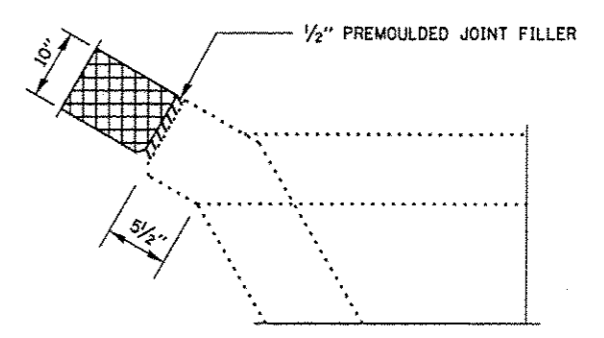


EXISTING VERTICAL REBAR EXTENDING INTO REMOVAL AREA SHALL BE CLEANED, STRAIGHTENED, AND INCORPORATED INTO THE NEW CONSTRUCTION. ALL OTHER REINFORCEMENT SHALL BE REMOVED



SECTION A-A



CORNER DETAIL (TYPICAL)

BILL OF MATERIAL

| ITEM | UNIT | TOTAL |
|------------------|-------|-------|
| CONCRETE REMOVAL | CU YD | 10.2 |