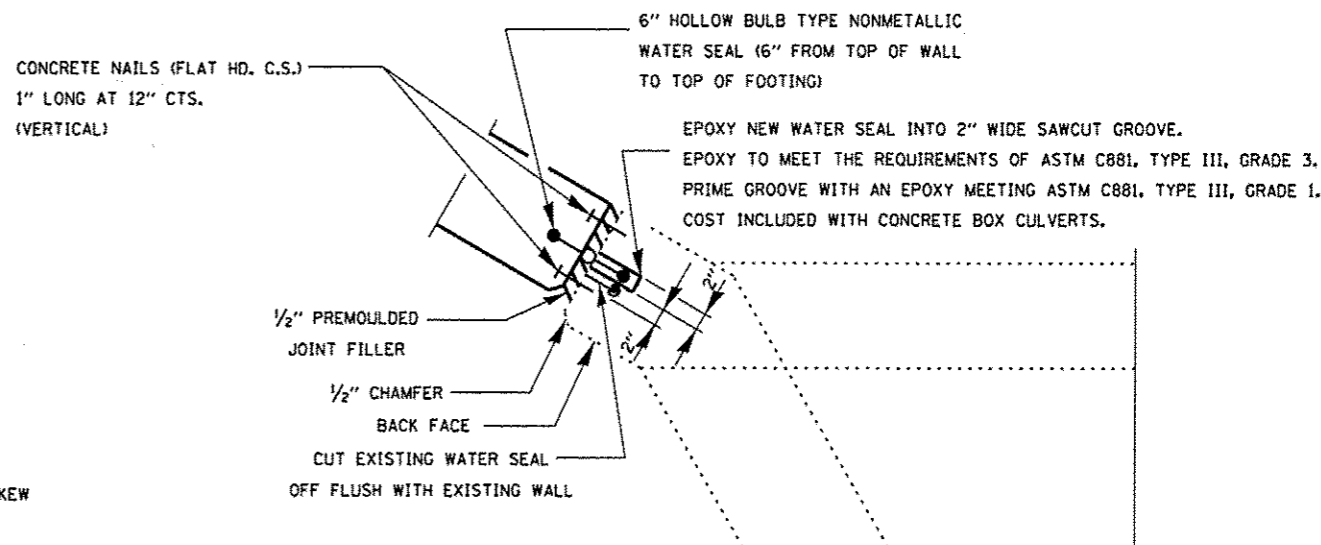


HALF ELEVATION

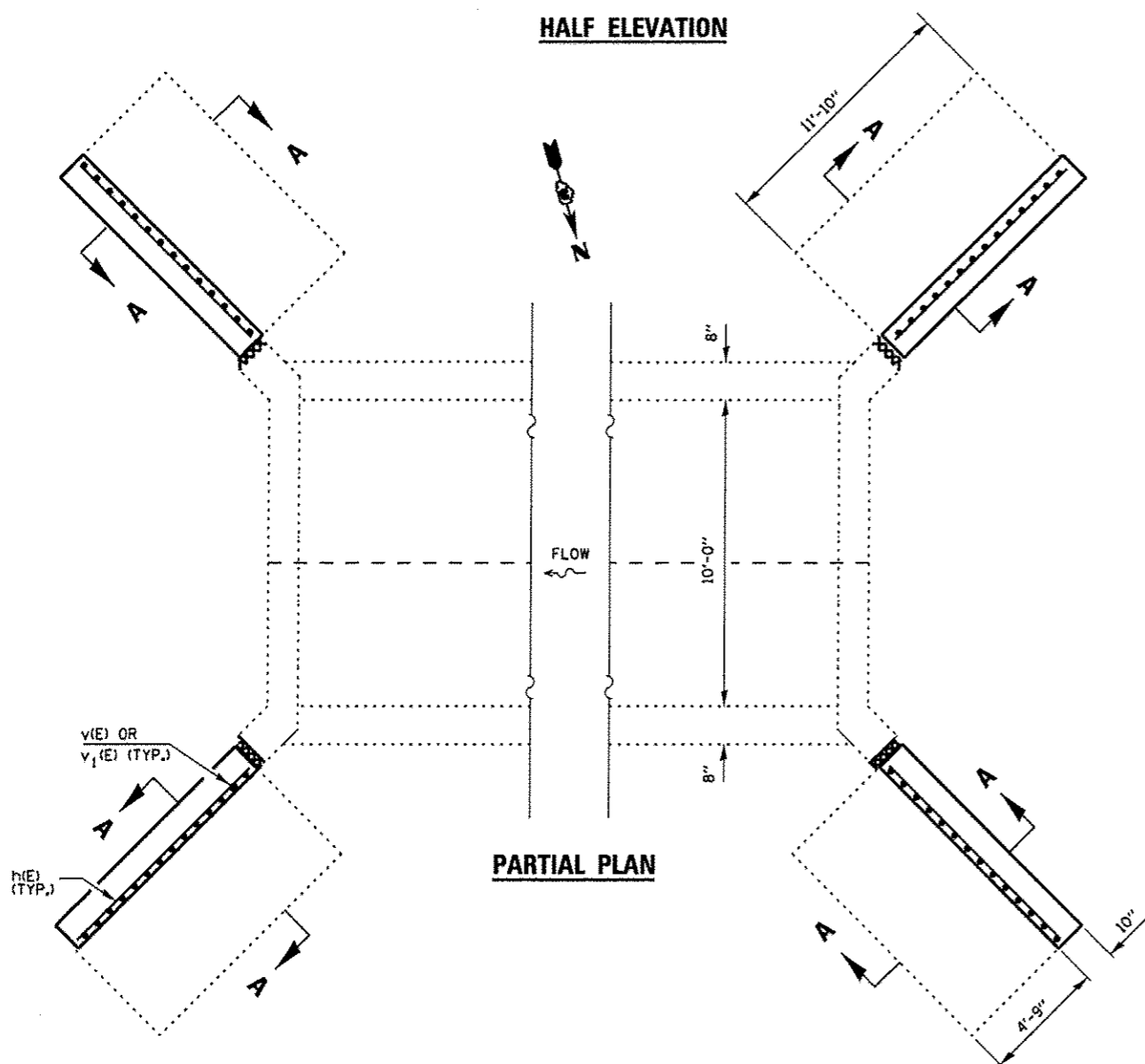
LAP LENGTH

BAR SIZE TO BE SPLICED	MIN. LAP LENGTH
#3	2'-1"
#4	2'-1"
#5	2'-7"
#6	3'-1"

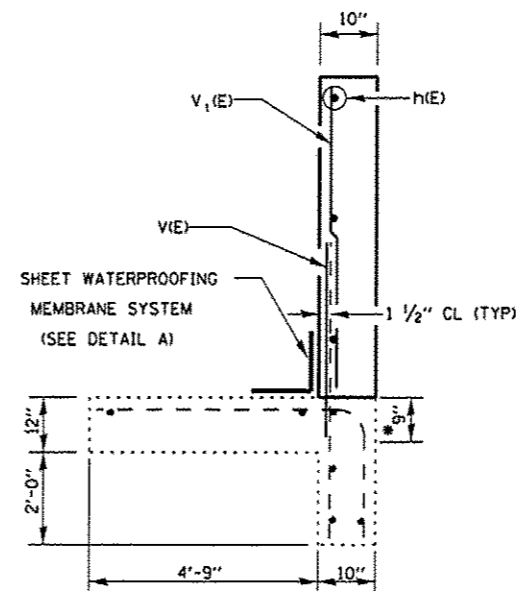
**ORDER V1(E) BAR FULL LENGTH AND CUT TO FIT SKEW



CORNER DETAIL

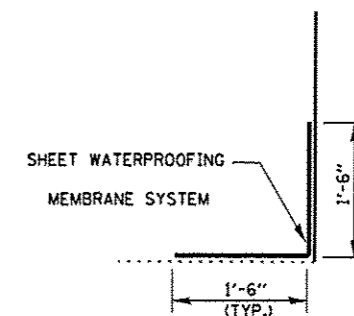


PARTIAL PLAN



SECTION A-A

* DRILL AND GROUT #5 V(E) BAR INTO EXISTING FOOTING AT SPECIFIED SPACING AND DEPTH IN ACCORDANCE WITH ART. 584 OF THE STANDARD SPECS.



DETAIL A

BILL OF MATERIAL

BAR	NO.	SIZE	LENGTH	SHAPE
h(E)	32	#4	11'-6"	—
v(E)	64	#5	4'-0"	—
v1(E)	64	#4	8'-9"	—
CONCRETE REMOVAL			CU. YD.	10.2
CONCRETE BOX CULVERTS			CU. YD.	10.2
SHEET WATERPROOFING MEMBRANE SYSTEM			SO. YD.	15.8
REINFORCEMENT BARS, EPOXY COATED			LBS.	890

FILE NAME *	USER NAME * pntalyj	DESIGNED - RS	REVISED -
o:\p\work\pntalyj\0311733\0366C	B-shr-details.dgn	DRAWN - RS	REVISED -
PLOT SCALE * 1/8"=1'-0"	CHECKED - RW	REVISIONS -	REVISIONS -
PLOT DATE * 4/3/2013	DATE -	REVISIONS -	REVISIONS -

**STATE OF ILLINOIS
DEPARTMENT OF TRANSPORTATION**

**RECONSTRUCTION DETAILS
LOCATION 1: SN 050-2562**

SCALE: SHEET 4 OF 5 SHEETS STA. 343+28

F.A.P. RTE.	SECTION	COUNTY	TOTAL SHEETS	SHEET NO.
311	D3 WW REPAIR 2014-1	*	41	10
* KENDALL & LASALLE		CONTRACT NO. 66C40		
[ILLINOIS] FED. AID PROJECT				