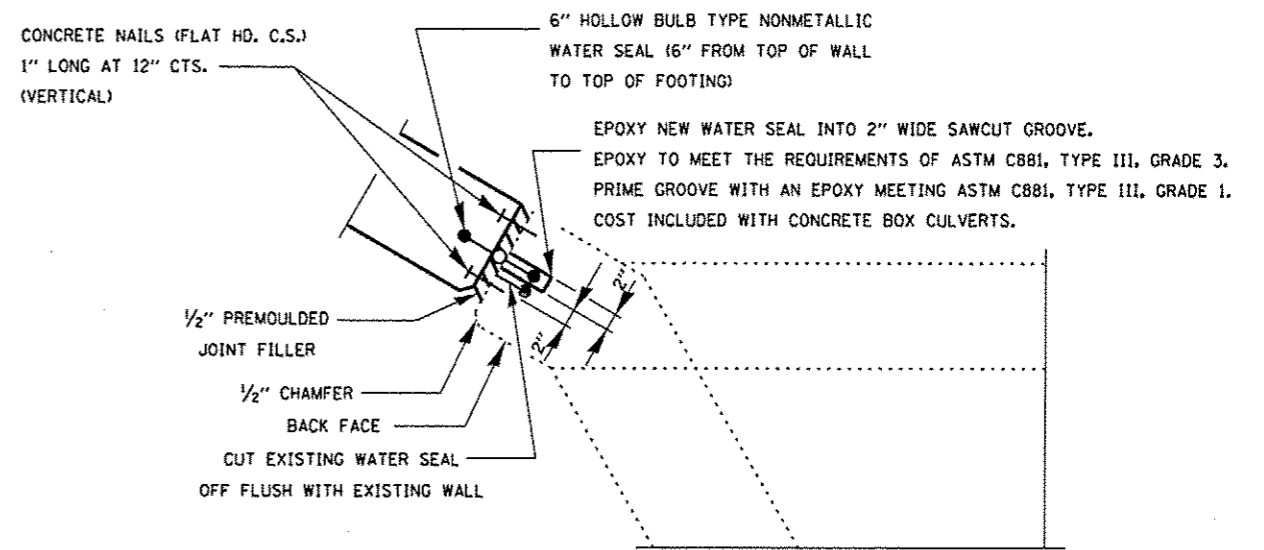


HALF ELEVATION

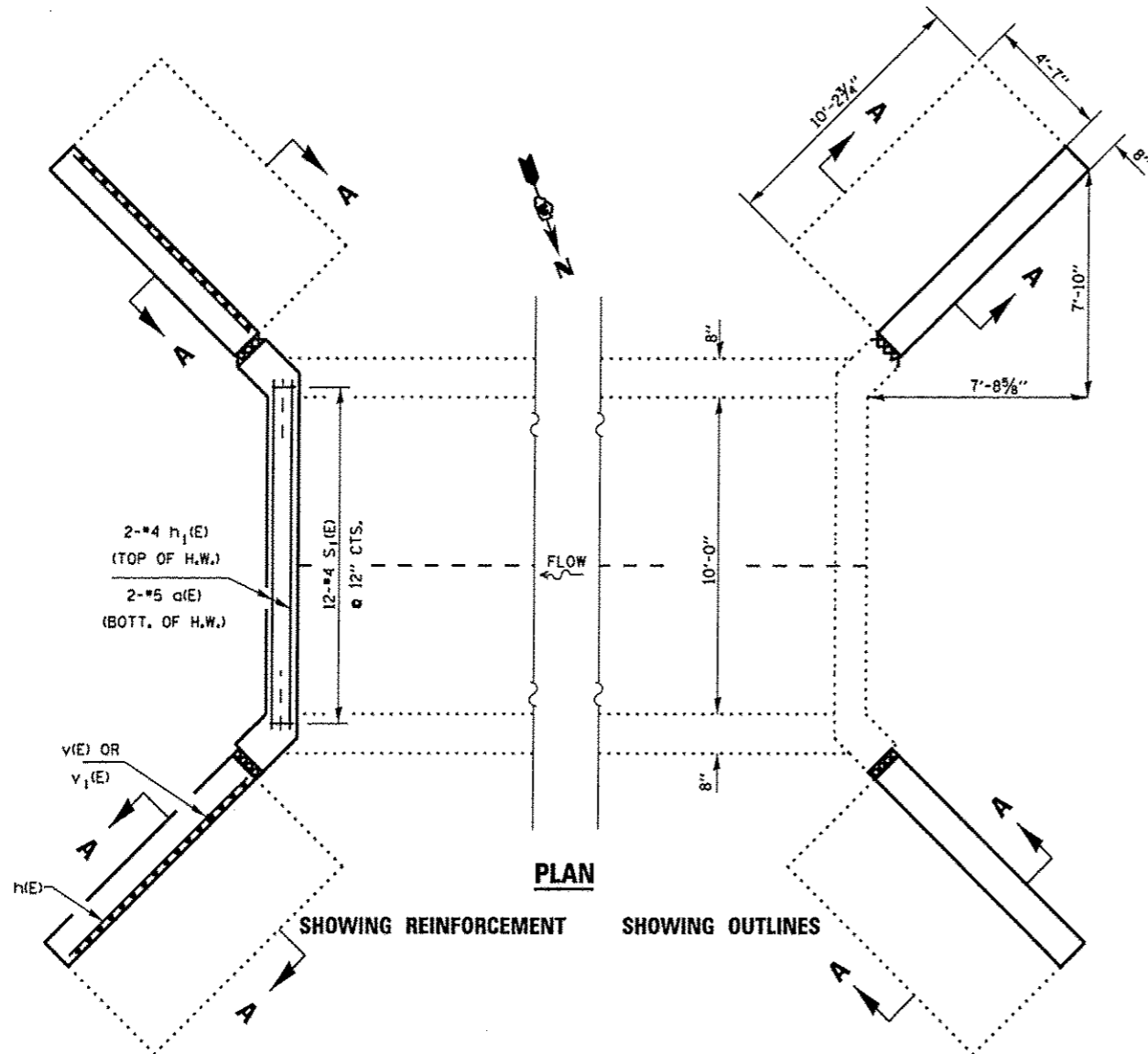
LAP LENGTH

BAR SIZE TO BE SPLICED	MIN. LAP LENGTH
#3	2'-1"
#4	2'-1"
#5	2'-7"
#6	3'-1"

** ORDER V₁(E) BAR FULL LENGTH AND CUT TO FIT SKEW

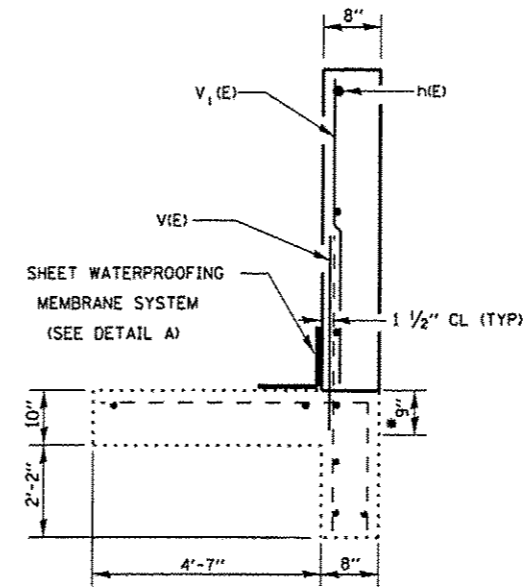


CORNER DETAIL



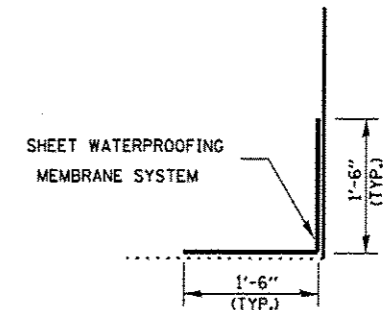
PLAN

SHOWING REINFORCEMENT SHOWING OUTLINES



SECTION A-A

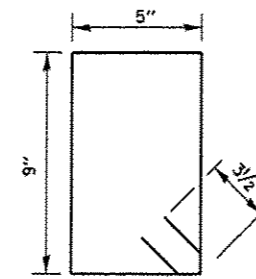
* DRILL AND GROUT #5 V₁(E) BAR INTO EXISTING FOOTING AT SPECIFIED SPACING AND DEPTH IN ACCORDANCE WITH ART. 584 OF THE STANDARD SPECS.



DETAIL A

BILL OF MATERIAL

BAR	NO.	SIZE	LENGTH	SHAPE
a(E)	2	#5	10'-6"	—
h(E)	32	#4	9'-10"	—
h1(E)	2	#4	10'-3"	—
s1(E)	12	#4	2'-11"	□
v(E)	64	#5	4'-0"	—
v1(E)	64	#4	7'-10"	—
CONCRETE REMOVAL			CU. YD.	7.0
CONCRETE BOX CULVERTS			CU. YD.	7.0
SHEET WATERPROOFING MEMBRANE SYSTEM			SQ. YD.	13.7
REINFORCEMENT BARS, EPOXY COATED			LBS.	880



**S₁ BAR
DOWNSTREAM**

FILE NAME *	USER NAME * pntalyj	DESIGNED - RS	REVISED -
0:\pwork\pntdot\pntalyj\08311733\03660	08-sht-details.dgn	DRAWN - RS	REVISED -
	PLOT SCALE * 1/8"=1'-0"	CHECKED - RW	REVISED -
	PLOT DATE * 4/3/2013	DATE -	REVISED -

**STATE OF ILLINOIS
DEPARTMENT OF TRANSPORTATION**

**RECONSTRUCTION DETAILS
FOR LOCATION 4: SN 047-2524**

SCALE: SHEET 5 OF 6 SHEETS STA. 1360+86

F.A.P. RTE.	SECTION	COUNTY	TOTAL SHEETS	SHEET NO.
311	D3 WW REPAIR 2014-1	*	41	28
*KENDALL & LASALLE			CONTRACT NO. 66C40	
ILLINOIS FED. AID PROJECT				