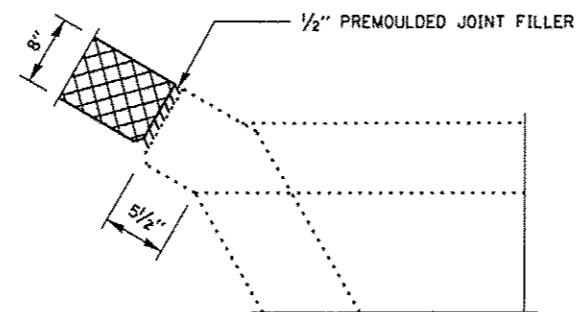
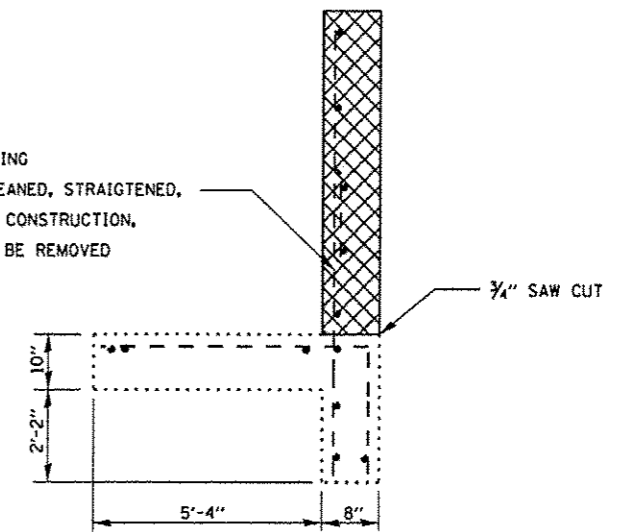


**PLAN**

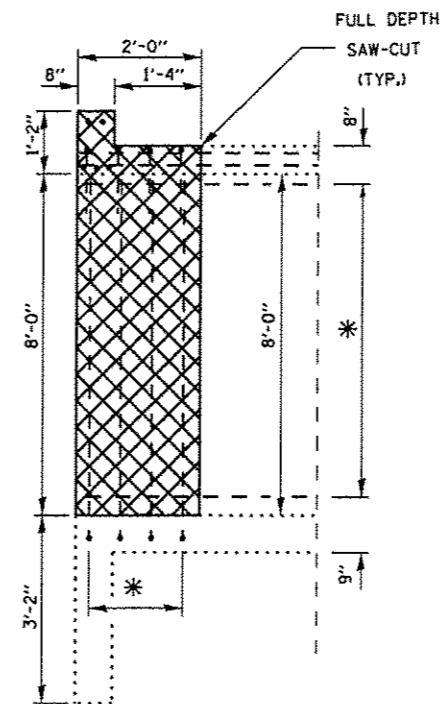


**CORNER DETAIL  
(TYPICAL)**

EXISTING VERTICAL REBAR EXTENDING INTO REMOVAL AREA SHALL BE CLEANED, STRAIGHTENED, AND INCORPORATED INTO THE NEW CONSTRUCTION. ALL OTHER REINFORCEMENT SHALL BE REMOVED



**SECTION A-A**



**HEADWALL /BARREL REMOVAL DETAIL**

\* EXIST. REINFORCEMENT BARS IN BARREL SHALL BE CUT OFF FLUSH WITH REMAINING CONCRETE FACE WITH THE EXCEPTION OF SKEWED (d)E) BARS. (SEE NOTE ON RECONSTRUCTION DETAIL SHEET)

 **CONCRETE REMOVAL**

**BILL OF MATERIAL**

ITEM	UNIT	TOTAL
CONCRETE REMOVAL	CU YD	10.6

FILE NAME *	USER NAME = pateluj	DESIGNED - RS	REVISED -
o:\pwork\puidos\pateluj\d0311733\03660	0-ah-t-detail.dgn	DRAWN - RS	REVISED -
	PLOT SCALE = 100.0000 1 / in	CHECKED - RW	REVISED -
	PLOT DATE = 4/3/2013	DATE -	REVISED -

STATE OF ILLINOIS  
DEPARTMENT OF TRANSPORTATION

**CONCRETE REMOVAL AND REPAIR DETAILS  
FOR LOCATION 6: SN 047-2526**

SCALE: SHEET 4 OF 6 SHEETS STA. 1396+50

F.A.P. RTE.	SECTION	COUNTY	TOTAL SHEETS	SHEET NO.
311	D3 WW REPAIR 2014-1	*	41	39
* KENDALL & LASALLE			CONTRACT NO. 66C40	
ILLINOIS FED. AID PROJECT				