

ELECTRICAL LOAD FOR INTERSECTION

STREET NAME	COMPONENT	NUMBER	WATTAGE EACH	BURNTIME %
US 6/ FIFTH STREET	RED	4	11	50
	YELLOW	4	22	25
	GREEN	4	15	25
	LED	4	20	100
IL 351/ JOLIET STREET	RED	5	11	50
	YELLOW	5	22	25
	GREEN	5	15	25
	YELLOW ARROW LT.	2	10	10
	GREEN ARROW LT.	2	11	10
	LED	4	20	100
TRAFFIC SIGNAL CABINET	CONTROLLER	1	6	100
	UPS	1	50	100

AGENCY RESPONSIBLE FOR TRAFFIC SIGNAL ENERGY CHARGES:
CITY OF LASALLE

THERE MAY BE ADDITIONAL ENERGY CHARGES DUE TO
LIGHTING OR EMERGENCY VEHICLE DETECTION EQUIPMENT.

TRAFFIC SIGNALS LEGEND

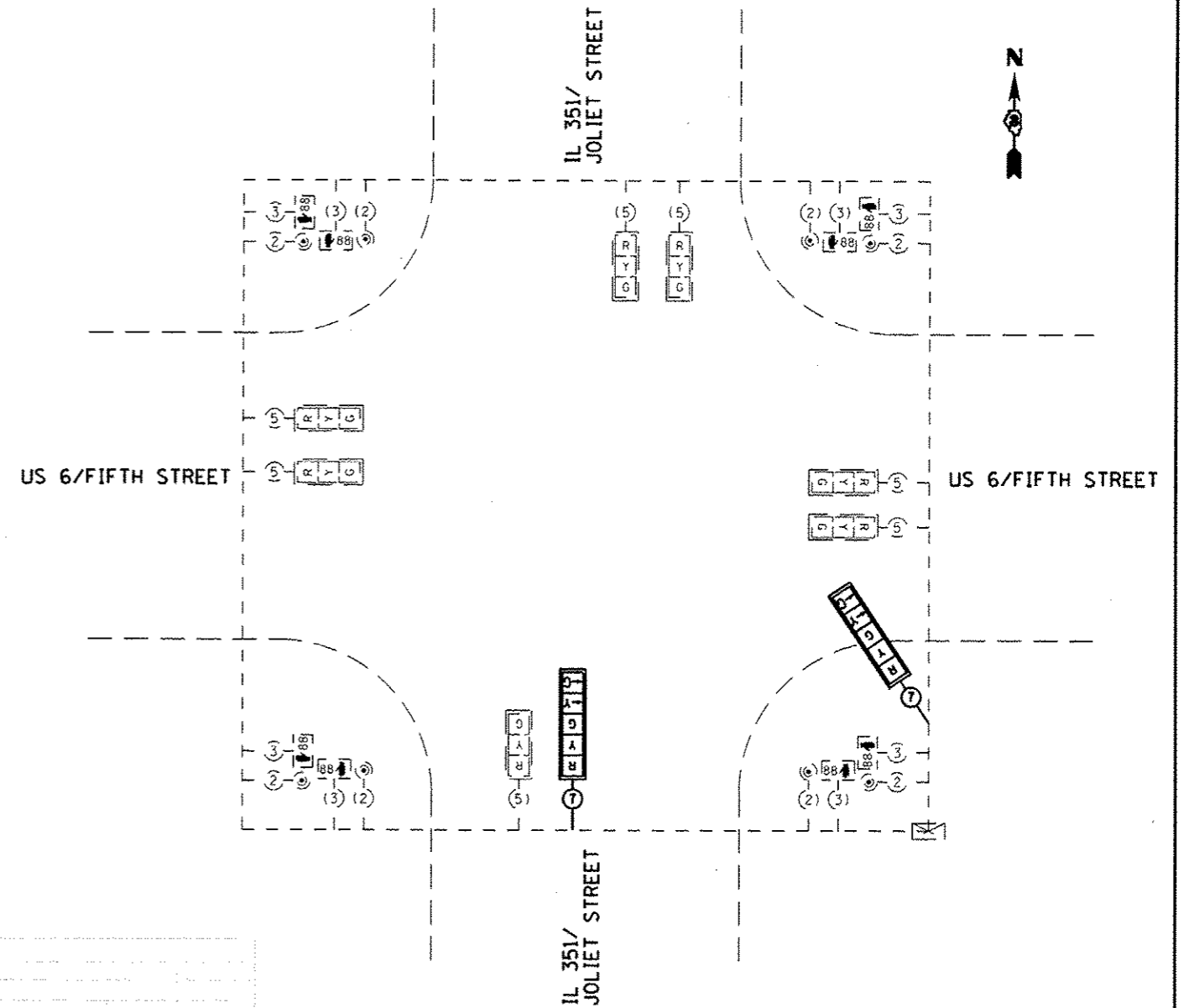
	DENOTES NUMBER OF EXISTING CONDUCTORS
	DENOTES NUMBER OF PROPOSED CONDUCTORS
	EXISTING CONTROLLER AND CABINET
	EXISTING SIGNAL SECTION 12"
	SIGNAL SECTION 12"
	LEFT TURN GREEN
	LEFT TURN YELLOW
	EXISTING PEDESTRIAN PUSH BUTTON
	EXISTING WALK/DON'T WALK WITH COUNT DOWN TIMER
	EXISTING TRAFFIC SIGNAL BACKPLATE
	PROPOSED TRAFFIC SIGNAL BACKPLATE

CONSTRUCTION NOTES:

REMOVAL OF THE FOLLOWING ITEMS SHALL BE PAID FOR AS REMOVE EXISTING TRAFFIC SIGNAL EQUIPMENT:
1 EACH - SIGNAL HEAD, 1-FACE, 4-SECTION, BRACKET MOUNTED
1 EACH - SIGNAL HEAD, 1-FACE, 4-SECTION, MAST ARM MOUNTED

HOLES IN TRAFFIC SIGNAL POSTS OR MAST ARM POLES RESULTING FROM REMOVAL OF SIGNAL HEADS SHALL BE COVERED WITH STAINLESS STEEL PLATES AND MOUNTING HARDWARE. THIS WORK SHALL BE CONSIDERED INCLUDED IN THE COST OF REMOVE EXISTING TRAFFIC SIGNAL EQUIPMENT.

REMOVE AND REPLACE TWO (2) 4-SECTION HEADS WITH LED 5-SECTION HEADS.



SCHEDULE OF QUANTITIES (97.5% STATE / 2.5% CITY)

LASALLE IL 351 (JOLIET ST) & US 6 (FIFTH ST)			
ITEM NO.	DESCRIPTION	UNIT	TOTAL QUANTITY
85000200	MAINTENANCE OF EXISTING TRAFFIC SIGNAL INSTALLATION	EACH	1
88040150	SIGNAL HEAD, POLYCARBONATE, LED, 1-FACE, 5-SECTION, BRACKET MOUNTED	EACH	1
88040160	SIGNAL HEAD, POLYCARBONATE, LED, 1-FACE, 5-SECTION, MAST ARM MOUNTED	EACH	1
88200410	TRAFFIC SIGNAL BACKPLATE, LOUVERED, FORMED PLASTIC	EACH	2
89502375	REMOVE EXISTING TRAFFIC SIGNAL EQUIPMENT	EACH	1

PROPOSED CABLE PLAN
NOT TO SCALE

FILE NAME : 036067-SHT-TS-C-1-IL 351-US6.DGN	USER NAME : ---	DESIGNED - ---	REVISED - ---	STATE OF ILLINOIS DEPARTMENT OF TRANSPORTATION	TRAFFIC SIGNAL CABLE PLAN LASALLE - IL 351 (JOLIET STREET) & US 6 (FIFTH STREET)		F.A. - RTE. -	SECTION	COUNTY	TOTAL SHEETS	SHEET NO.	
PL01 SCALE : 1" = 20'	CHECKED - PM	REVISOR - ---	REVISOR - ---		---	D-3 LED RETROFIT 2013-1	*	38	28	CONTRACT NO. 66C67		
PL01 DATE : 03/13	DATE - 03/13	REVISOR - ---	REVISOR - ---		SCALE: 1" = 20'	SHEET NO. ___ OF ___ SHEETS	STA. _____ TO STA. _____	ILLINOIS FED. AID PROJECT				
* DEKALB, GRUNDY, KANKAKEE & LASALLE												