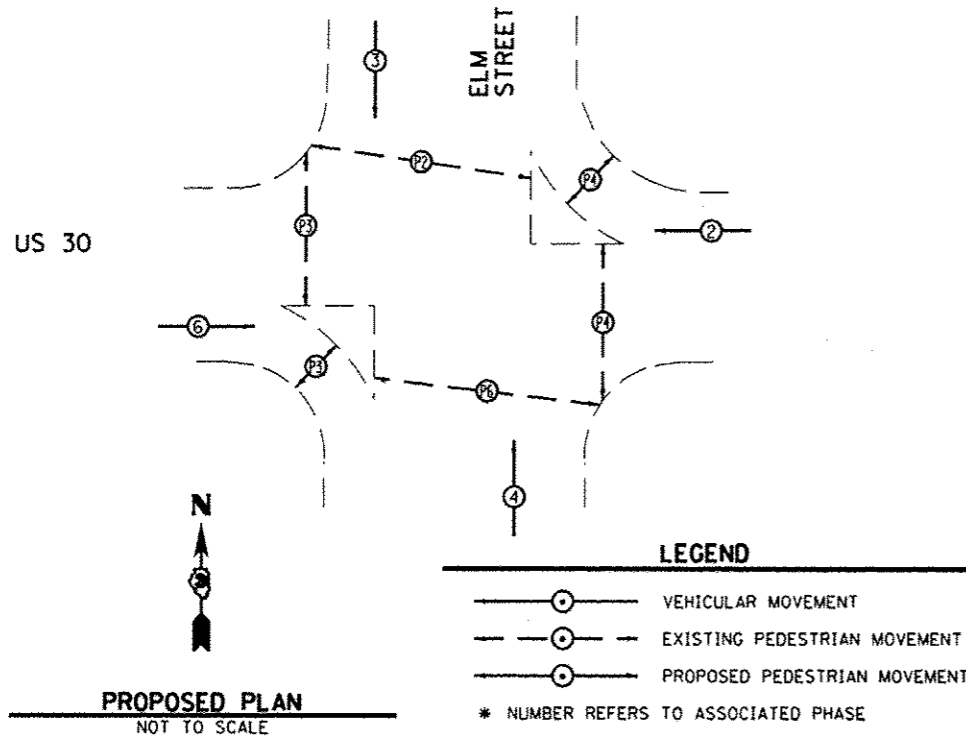


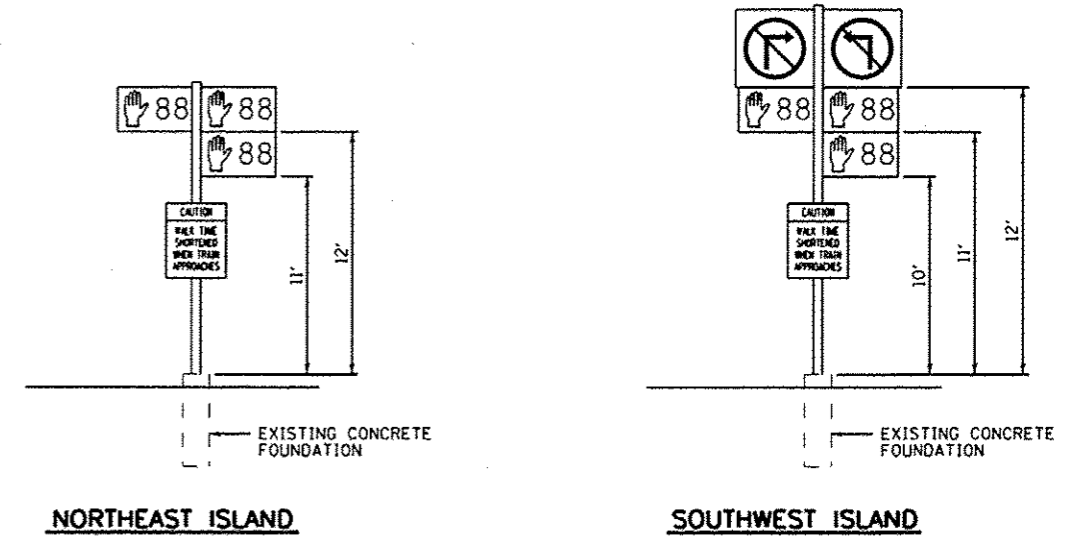
CONTROLLER SEQUENCE

NAME OF INTERSECTION: US 30 & ELM STREET
SEE HIGHWAY STANDARD 857001 FOR PHASE DESIGNATIONS



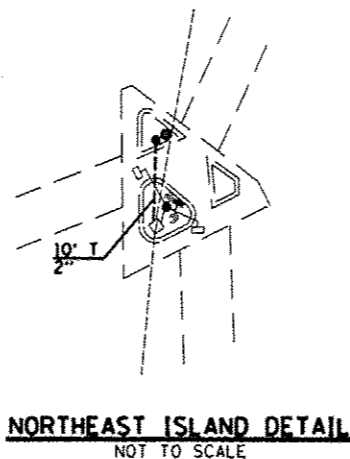
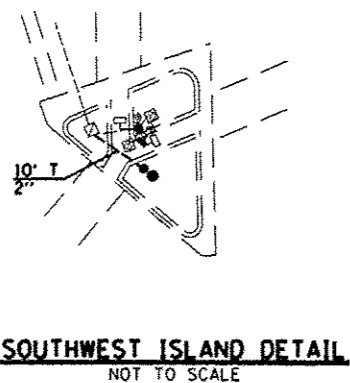
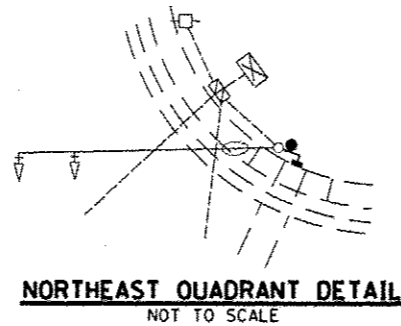
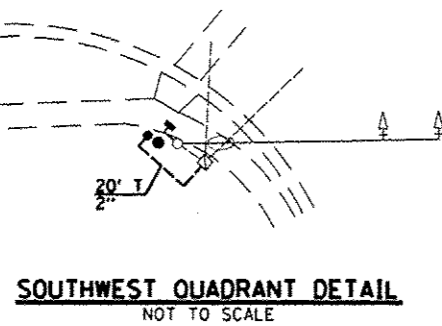
TRAFFIC SIGNALS LEGEND

	EXISTING CONTROLLER AND CABINET
	EXISTING SERVICE INSTALLATION
	EXISTING PEDESTRIAN PUSH BUTTON
	PROPOSED PEDESTRIAN PUSH BUTTON
	EXISTING TRAFFIC SIGNAL POST
	PROPOSED TRAFFIC SIGNAL POST
	EXISTING PEDESTRIAN SIGNAL HEAD
	PROPOSED PEDESTRIAN SIGNAL HEAD
	EXISTING SIGNAL HEAD WITH BACKPLATE
	EXISTING ILLUMINATED SIGN
	EXISTING HANDHOLE
	EXISTING DOUBLE HANDHOLE



SCHEDULE OF QUANTITIES (95% STATE / 5% CITY)

ITEM NO.	DESCRIPTION	UNIT	TOTAL QUANTITY
81028350	UNDERGROUND CONDUIT, PVC, 2" DIA.	FOOT	44
85000200	MAINTENANCE OF EXISTING TRAFFIC SIGNAL INSTALLATION	EACH	1
87301215	ELECTRIC CABLE IN CONDUIT, SIGNAL NO. 14 2C	FOOT	917
87301225	ELECTRIC CABLE IN CONDUIT, SIGNAL NO. 14 3C	FOOT	946
87301900	ELECTRIC CABLE IN CONDUIT, EQUIPMENT GROUNDING CONDUCTOR, NO. 6 1C	FOOT	650
87502470	TRAFFIC SIGNAL POST, GALVANIZED STEEL 13 FT.	EACH	1
87502490	TRAFFIC SIGNAL POST, GALVANIZED STEEL 15 FT.	EACH	1
87601200	PEDESTRIAN PUSH-BUTTON POST, GALVANIZED STEEL, TYPE II	EACH	3
87900200	DRILL EXISTING HANDHOLE	EACH	3
88102825	PEDESTRIAN SIGNAL HEAD, POLYCARBONATE, LED, 1-FACE, BRACKET MOUNTED WITH COUNT DOWN TIMER	EACH	4
88800100	PEDESTRIAN PUSH BUTTON	EACH	4
89500200	RELOCATE EXISTING PEDESTRIAN SIGNAL HEAD	EACH	4
89500300	RELOCATE EXISTING ILLUMINATED SIGN	EACH	2
89500400	RELOCATE EXISTING PEDESTRIAN PUSH-BUTTON	EACH	4
89502210	MODIFY EXISTING CONTROLLER CABINET	EACH	1
X4402815	ISLAND PAVEMENT REMOVAL AND REPLACEMENT	SQ FT	20
X7240600	REMOVE AND RE-ERECT EXISTING SIGN	EACH	3
X8140102	GROUND EXISTING HANDHOLE	EACH	6



FILE NAME : 0366C67-SHT-TS-C-W-US30-ELMST-2.DGN	USER NAME : --	DESIGNED - --	REVISED - ---
		DRAWN - ARR/NV	REVISED - ---
	PLOT SCALE : 1" = 20'	CHECKED - PM	REVISED - ---
	PLOT DATE : 03/13	DATE - 03/13	REVISED - ---

STATE OF ILLINOIS
DEPARTMENT OF TRANSPORTATION

TRAFFIC SIGNAL CABLE PLAN
WATERMAN - US 30 & ELM STREET
SCALE: 1" = 20' SHEET NO. ___ OF ___ SHEETS STA. _____ TO STA. _____

F.A. RTE.:	SECTION	COUNTY	TOTAL SHEETS	SHEET NO.
--	D-3 LED RETROFIT 2013-1		38	36
			CONTRACT NO. 66C67	
ILLINOIS FED. AID PROJECT				

* DEKALB, GRUNDY, KANKAKEE & LASALLE