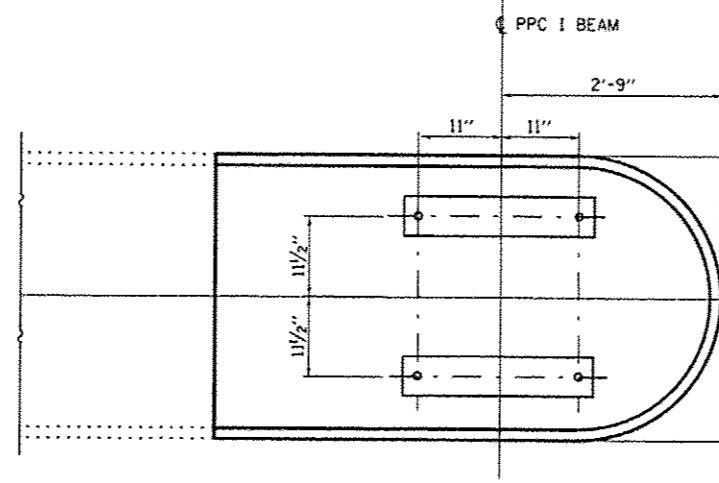


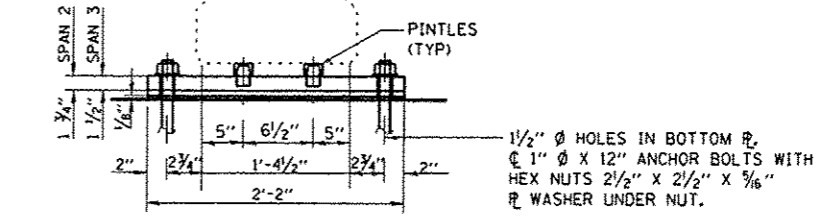
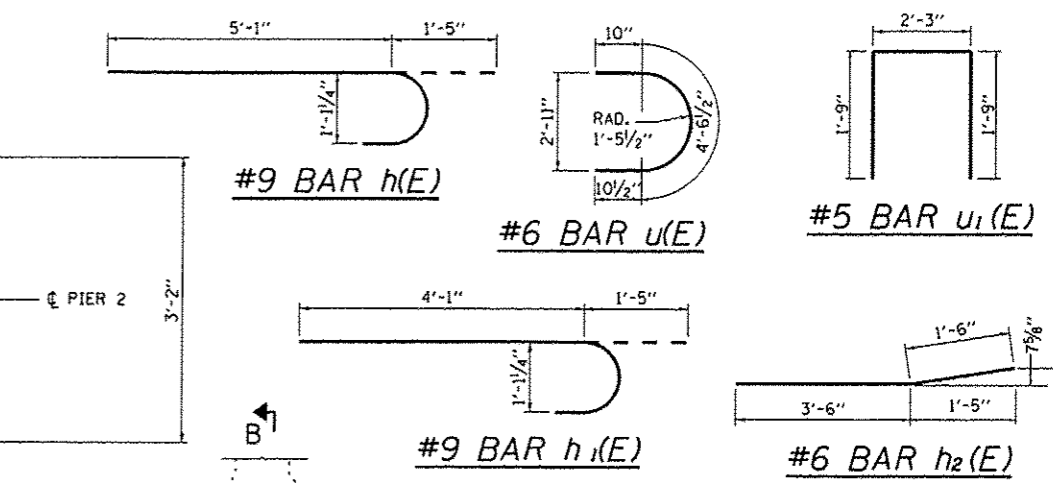
TOP PLAN

SUGGESTED SEQUENCE FOR NEW BEARING INSTALLATION

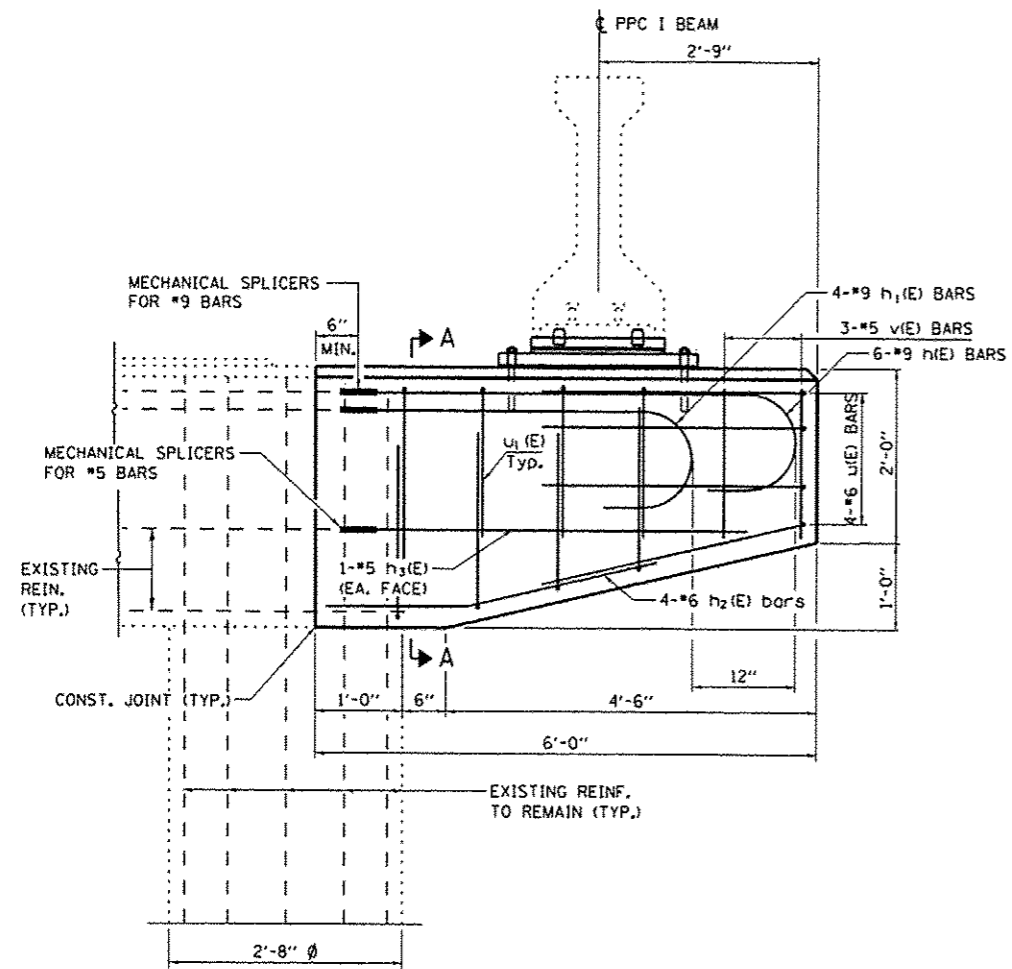
1. ALLOW CONCRETE PIER REPAIRS TO CURE.
2. INSTALL PL A WITH PINTLE UNDER PPC I-BEAM.
3. SLIDE PL B BETWEEN PL A AND BEARING SEAT.
4. INSTALL ANCHOR BOLTS.



ANCHOR BOLTS LAYOUT

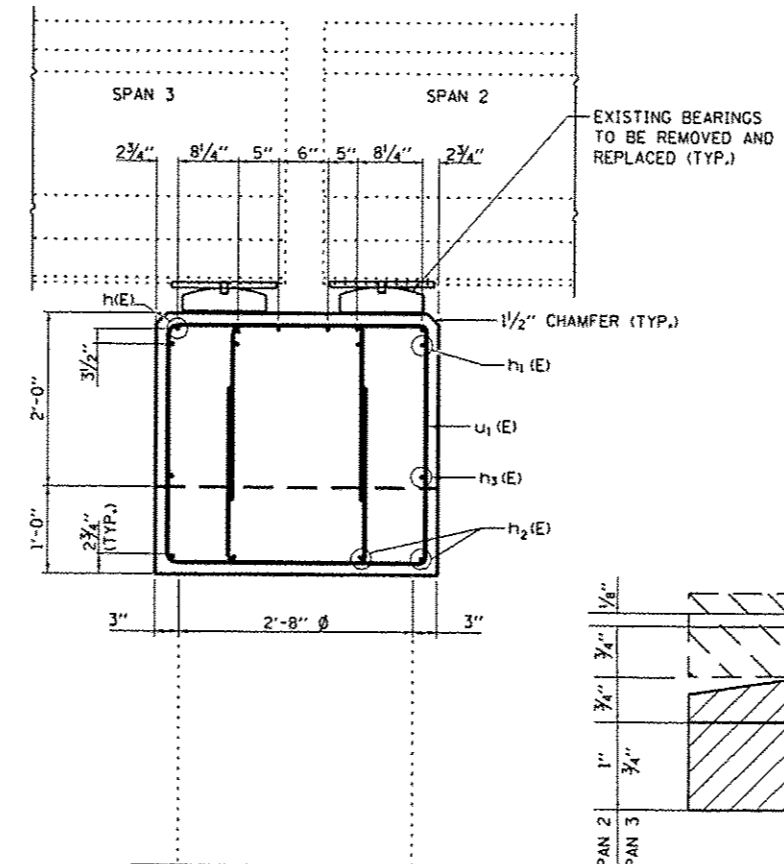


EXISTING FIXED BEARING TO BE REMOVED AND REPLACED

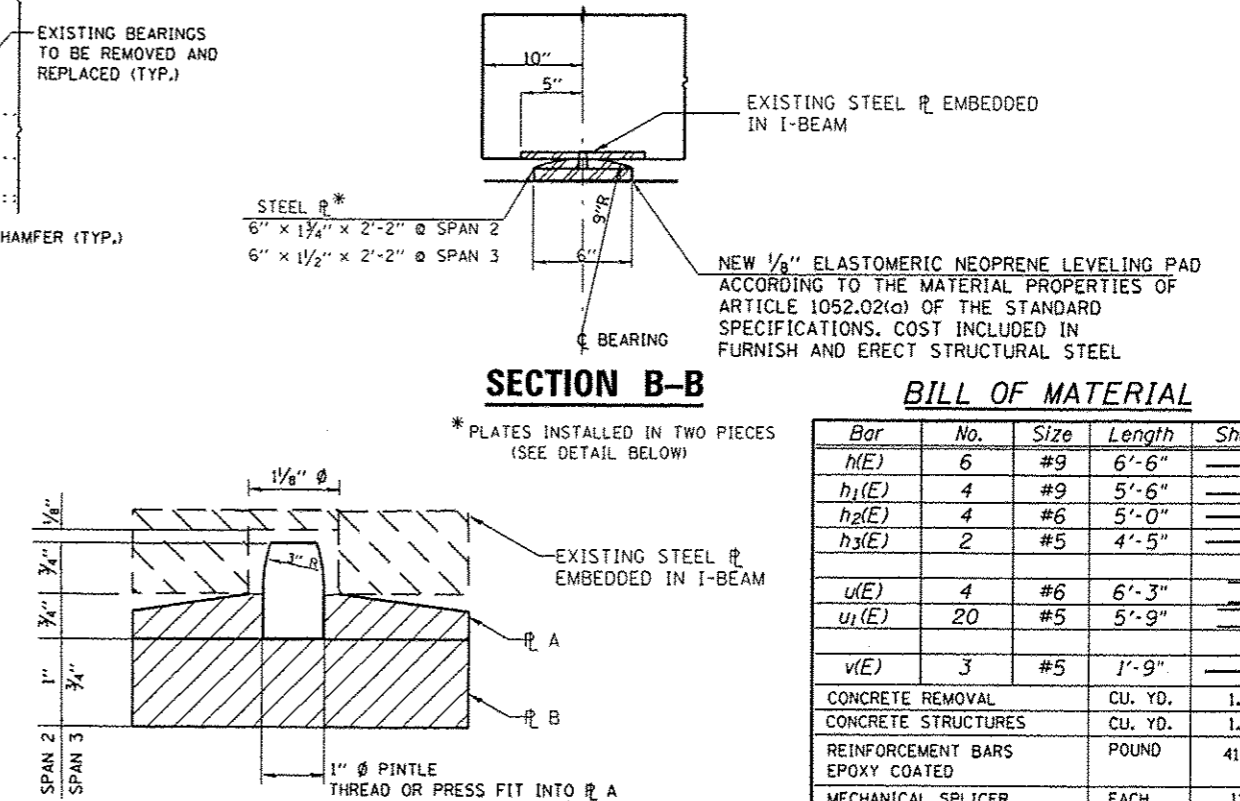


ELEVATION

PIER 2 EAST END - LOOKING NORTH



SECTION A-A



PROPOSED BEARING DETAIL

BILL OF MATERIAL

Bar	No.	Size	Length	Shape
h(E)	6	#9	6'-6"	
h1(E)	4	#9	5'-6"	
h2(E)	4	#6	5'-0"	
h3(E)	2	#5	4'-5"	
u(E)	4	#6	6'-3"	
u1(E)	20	#5	5'-9"	
v(E)	3	#5	1'-9"	
CONCRETE REMOVAL			CU. YD.	1.9
CONCRETE STRUCTURES			CU. YD.	1.9
REINFORCEMENT BARS EPOXY COATED			POUND	410
MECHANICAL SPLICER			EACH	12
FURNISH AND ERECT STRUCTURAL STEEL			POUND	133
TEMPORARY SHORING AND CRIBBING			EACH	2

FILE NAME =	USER NAME = pately	DESIGNED - YOGESH PATEL	REVISED -
c:\pvc\work\pvc\pately\10320332\036671-sht-details.dgn		DRAWN - YOGESH PATEL	REVISED -
		CHECKED - RON WOODSHARK	REVISED -
		DATE -	REVISED -

STATE OF ILLINOIS
DEPARTMENT OF TRANSPORTATION

PIER 2 REPAIR DETAILS
SN: 050-0133

F.A.I. RTE.	SECTION	COUNTY	TOTAL SHEETS	SHEET NO.
80	03 PIER CAP REPAIR 2014-I	LASALLE	25	19
			CONTRACT NO. 66C71	