

STATE OF ILLINOIS
DEPARTMENT OF TRANSPORTATION
DIVISION OF HIGHWAYS
PROPOSED
HIGHWAY PLANS

F.A.I. RTE.	SECTION	COUNTY	TOTAL SHEETS	SHEET NO.
55	(32-1) I	GRUNDY	7	1
		ILLINOIS	CONTRACT NO. 66C73	

INDEX OF SHEETS

1	COVER SHEET
2	GENERAL NOTES
3	SUMMARY OF QUANTITIES
4	TYPICAL SECTION
5	SCHEDULE OF QUANTITIES
6 - 7	DETAILS

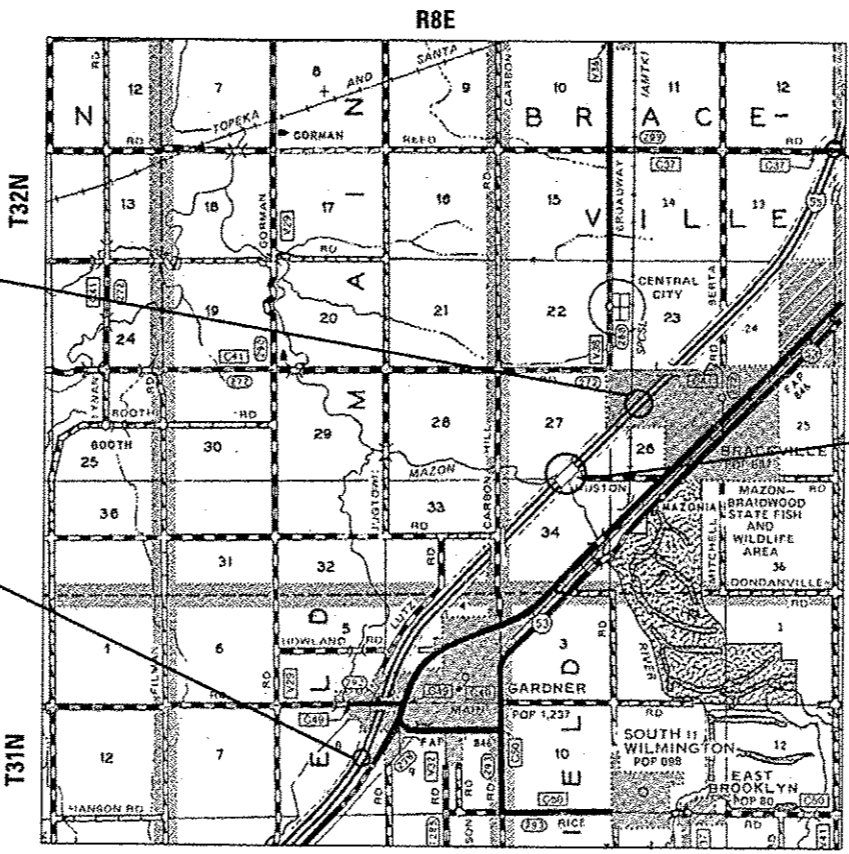
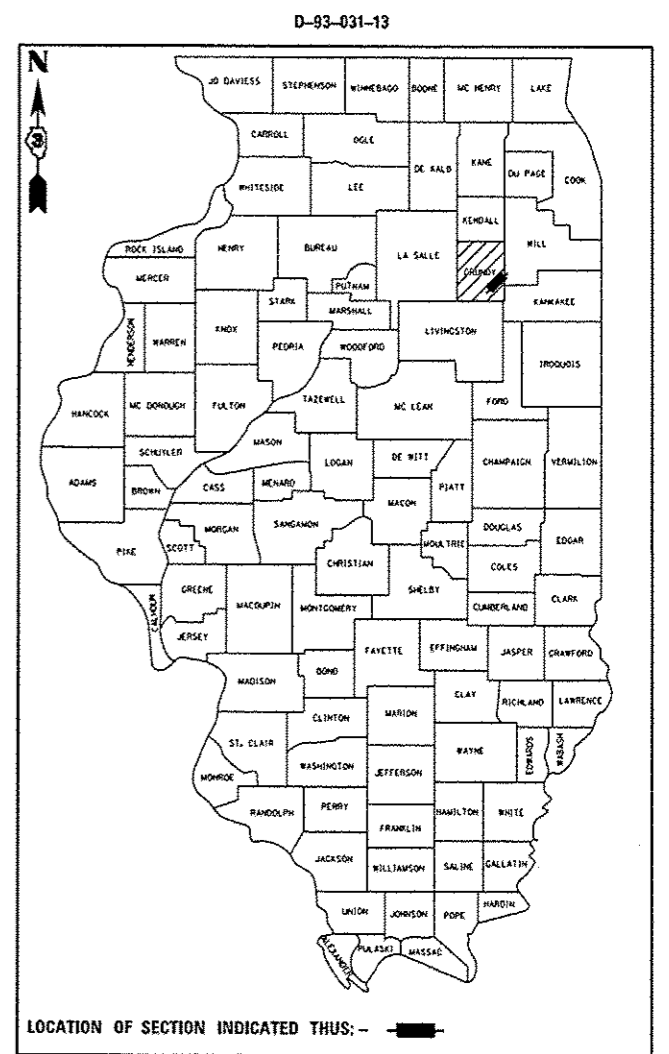
STANDARDS

000001-06	STANDARD SYMBOLS, ABBREVIATIONS AND PATTERNS
001006	DECIMAL OF AN INCH AND OF A FOOT
701101-03	OFF-ROAD OPERATIONS MULTILANE, 15' (4.5 m) TO 24" (600 mm) FROM PAVEMENT EDGE
701106-02	OFF-ROAD OPERATIONS, MULTILANE, MORE THAN 15' (4.5 m) AWAY
701400-06	APPROACH TO LANE CLOSURE, FREEWAY/EXPRESSWAY
701401-07	LANE CLOSURE, FREEWAY/EXPRESSWAY
701426-05	LANE CLOSURE, MULTILANE INTERMITTENT OR MOVING OPERATION, FOR SPEEDS ≥ 45 MPH
701901-02	TRAFFIC CONTROL DEVICES

F.A.I. ROUTE 55 (I-55)
SECTION (32-1) I

CENTERLINE MICRO-SURFACING
GRUNDY COUNTY

C-93-036-13



BRIDGE OMISSION S.I.C.S.L. RAILROAD
 S.B. STA: 961 + 58.00 TO STA. 964 + 65.80
 N.B. STA. 962 + 23.20 TO STA. 965 + 31.00
 S.N. 032-0007 & 032-0008

BEGIN IMPROVEMENT
 STA: 797 + 93

BRIDGE OMISSION MAZON RIVER
 STA. 1005 + 05.17 TO STA. 1007 + 78.83
 S.N. 032-0005 & 032-0006

END IMPROVEMENT
 STA. 1167 + 53.53

INTERSTATE
 2012 ADT = 24800
 PV = 75.1% SU = 2.32% MU = 27.58%

MICROFILMED _____
 REEL NUMBER _____
 AWARDED _____
 RESIDENT ENGINEER _____
 AS BUILT CHANGES WERE MADE
 ON THE FOLLOWING SHEETS _____

FULL SIZE PLANS HAVE BEEN PREPARED USING STANDARD ENGINEERING SCALES. REDUCED SIZED PLANS WILL NOT CONFORM TO STANDARD SCALES. IN MAKING MEASUREMENTS ON REDUCED PLANS, THE ABOVE SCALES MAY BE USED.

J.U.L.I.E.
 JOINT UTILITY LOCATION INFORMATION FOR EXCAVATION
 1-800-892-0123
 OR 811

PROJECT ENGINEER: CRAIG REED, P.E.
UNIT CHEIF: BRAD DUNCAN, P.E.
 DISTRICT NO. (815)-434-6131
 CONTRACT NO. 66C73

GROSS LENGTH = 36960.53 FT. = 7.0 MILE
 BRIDGE OMISSIONS = 581.46 = 0.11 MILE
 NET LENGTH = 36379.07 FT. = 6.89 MILE

STATE OF ILLINOIS
 DEPARTMENT OF TRANSPORTATION
 DIVISION OF HIGHWAYS

SUBMITTED March 27 2013
Paul A. Costanzo
 DEPUTY DIRECTOR OF HIGHWAYS, REGION ENGINEER

May 10 2013
John D. Baranzelli, P.E.
 ENGINEER OF DESIGN AND ENVIRONMENT

May 10 2013
Osman Osman, P.E.
 DIRECTOR OF HIGHWAYS, CHIEF ENGINEER

PRINTED BY THE AUTHORITY
OF THE STATE OF ILLINOIS