

STATE OF ILLINOIS
DEPARTMENT OF TRANSPORTATION
DIVISION OF HIGHWAYS

**PROPOSED
HIGHWAY PLANS**

FAI ROUTE 57 (I-57)
SECTION (38-5)I-2

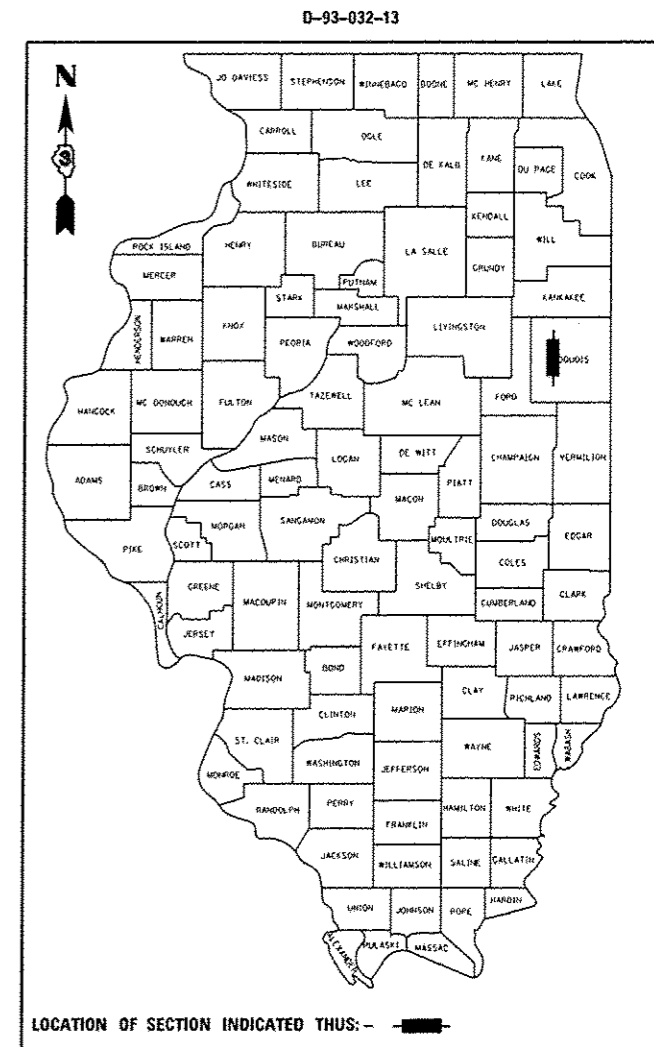
**CENTERLINE MICRO-SURFACING (JOINT REPAIR)
IROQUOIS COUNTY**

C-93-037-13

F.A.I. RTE.	SECTION	COUNTY	TOTAL SHEETS	SHEET NO.
57	(38-5)I-2	IROQUOIS	7	1
		ILLINOIS	CONTRACT NO. 66C74	

INDEX

- 1 COVER SHEET
- 2 GENERAL NOTES
- 3 SUMMARY OF QUANTITIES
- 4 TYPICAL SECTION
- 5 SCHEDULE OF QUANTITIES
- 6 DETAILS
- 7 STANDARD 701400 (SPECIAL)



PROJECT BEGINS
STA. 520+62

1.2 MILES NORTH OF IL 54 IN ONARGA TO 2.4 MILES NORTH OF US 24

S.N. 038-0007 N.B.
S.N. 038-0008 S.B.
STA. 585+10.21

S.N. 038-0004 N.B.
S.N. 038-0003 S.B.
STA. 604+54.72

S.N. 038-0129
STA. 707+86.74

PROJECT ENDS
STA. 740+50

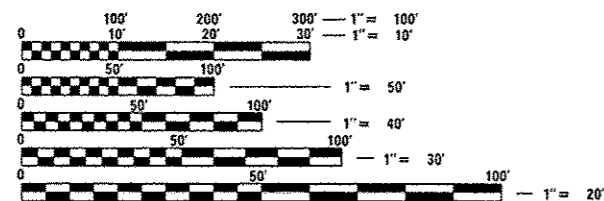
S.N. 038-0086
STA. 541+66.36

S.N. 038-0005 N.B.
S.N. 038-0006 S.B.
STA. 592+63.65

S.N. 038-0031
STA. 647+32.20 =
STA. 20+00.00 US 24

S.N. 038-0002 N.B.
S.N. 038-0001 S.B.
STA. 697+75.00

LOCATION OF SECTION INDICATED THUS: - [Symbol] -



FULL SIZE PLANS HAVE BEEN PREPARED USING STANDARD ENGINEERING SCALES. REDUCED SIZED PLANS WILL NOT CONFORM TO STANDARD SCALES. IN MAKING MEASUREMENTS ON REDUCED PLANS, THE ABOVE SCALES MAY BE USED.

J.U.L.I.E.
JOINT UTILITY LOCATION INFORMATION FOR EXCAVATION
1-800-892-0123
OR 811

PROJECT ENGINEER: JOE KANNEL, P.E.
UNIT CHIEF: SCOTT FERGUSON, P.E.
DISTRICT NO. (815)-434-6131
CONTRACT NO. 66C74

GROSS LENGTH = 24,014 FT. = 4.55 MILE
NET LENGTH = 21,389 FT. = 4.05 MILE

DESIGN DESIGNATION: INTERSTATE
ADT 18200 (2011)
PV = 74.2% SU = 4.7% MU = 21.1%

STATE OF ILLINOIS
DEPARTMENT OF TRANSPORTATION
DIVISION OF HIGHWAYS

SUBMITTED 03-29-13
[Signature]
DEPUTY DIRECTOR OF HIGHWAYS, REGION ENGINEER

May 10 2013
[Signature]
ENGINEER OF DESIGN AND ENVIRONMENT

May 10 2013
[Signature]
DIRECTOR OF HIGHWAYS, CHIEF ENGINEER

PRINTED BY THE AUTHORITY
OF THE STATE OF ILLINOIS

STANDARDS

- 000001-06 STANDARD SYMBOLS, ABBREVIATIONS AND PATTERNS
- 001006 DECIMAL OF AN INCH AND OF A FOOT
- 701400-06 APPROACH TO LANE CLOSURE, FREEWAY/EXPRESSWAY
- 701401-07 LANE CLOSURE, FREEWAY/ EXPRESSWAY
- 701901-02 TRAFFIC CONTROL DEVICES
- 780001-03 TYPICAL PAVEMENT MARKINGS

GENERAL NOTES

THE ENGINEER WILL BE THE SOLE JUDGE CONCERNING CURING TIME FOR THE MICROSURFACING AND WHEN THE ROADWAY WILL BE OPENED TO TRAFFIC.

SHORT TERM PAVEMENT MARKING SHALL BE USED TO OUTLINE EXIT AND ENTRANCE RAMPS FOR THE PRIME COAT APPLICATION AND EACH RESURFACING LIFT.

ANY REFERENCE TO A STANDARD IN THESE PLANS SHALL BE INTERPRETED TO MEAN THE EDITION AS INDICATED BY THE SUBNUMBER SHOWN IN THE LIST OF STANDARDS OR THE COPY INCLUDED IN THESE PLANS.

THE FOLLOWING RATES OF APPLICATION HAVE BEEN USED IN CALCULATING PLAN QUANTITIES:

SHORT TERM PAVEMENT MARKING	10	FT /100 FT OF APPLICATION
MIX FOR CRACKS, JTS & FLGWYS	0.0003	TONS / SQ YD
MICROSURFACING, SINGLE PASS	20	POUNDS/SQ YARD

BITUMINOUS MATERIALS (PRIME COAT) RATES	
TYPE OF SURFACE TO BE PRIMED	RESIDUAL ASPHALT RATE LB/SQ FT (KG/SQ M)
MILLED HMA, AGED NON-MILLED HMA, MILLED CONCRETE, NON-MILLED CONCRETE & TINED CONCRETE	0.05
FOG COAT BWTWEEN HMA LIFTS, IL-4.75 & BRICK	0.025

RUT DEPTH OF EXISTING PAVEMENT	NUMBER OF PASSES	AGGREGATE GRADATION	APPLICATION RATE PER PASS
<0.35 INCH	1	TYPE II	20LBS/SQ YD

THE CONTRACTOR SHALL CONTACT JULIE AT LEAST 48 HOURS PRIOR TO EXCAVATION TO DETERMINE WHICH UTILITIES ARE IN THE AREA.

THE TEMPORARY PAVEMENT MARKING SHALL BE PLACED PRIOR TO MICRO-SURFACING.

STATE OF ILLINOIS
DEPARTMENT OF TRANSPORTATION
DISTRICT THREE

PREPARED BY: Don Brown
DISTRICT STUDIES & PLANS ENGINEER

DATE: 3-29-13

EXAMINED BY: Harold Quigg
DISTRICT CONSTRUCTION ENGINEER

Wayne Phillips
DISTRICT MATERIALS ENGINEER

Bruce A. Huber
DISTRICT OPERATIONS ENGINEER

FILE NAME : c:\pwwork\p\d0328501\mc fadden\66674-sh.t-cover.dgn	USER NAME : mc fadden	DESIGNED : -	REVISED : -	STATE OF ILLINOIS DEPARTMENT OF TRANSPORTATION	GENERAL NOTES	F.A.I. RTE. 57	SECTION (38-5)1-2	COUNTY IROQUOIS	TOTAL SHEETS 7	SHEET NO. 2	
PLOT SCALE : 100.0000' / 1" =	CHECKED : -	REVISED : -	SCALE:			SHEET	OF	SHEETS	STA.	TO STA.	CONTRACT NO. 66674
PLOT DATE : 3/19/2013	DATE : -	REVISED : -	ILLINOIS FED. AID PROJECT								

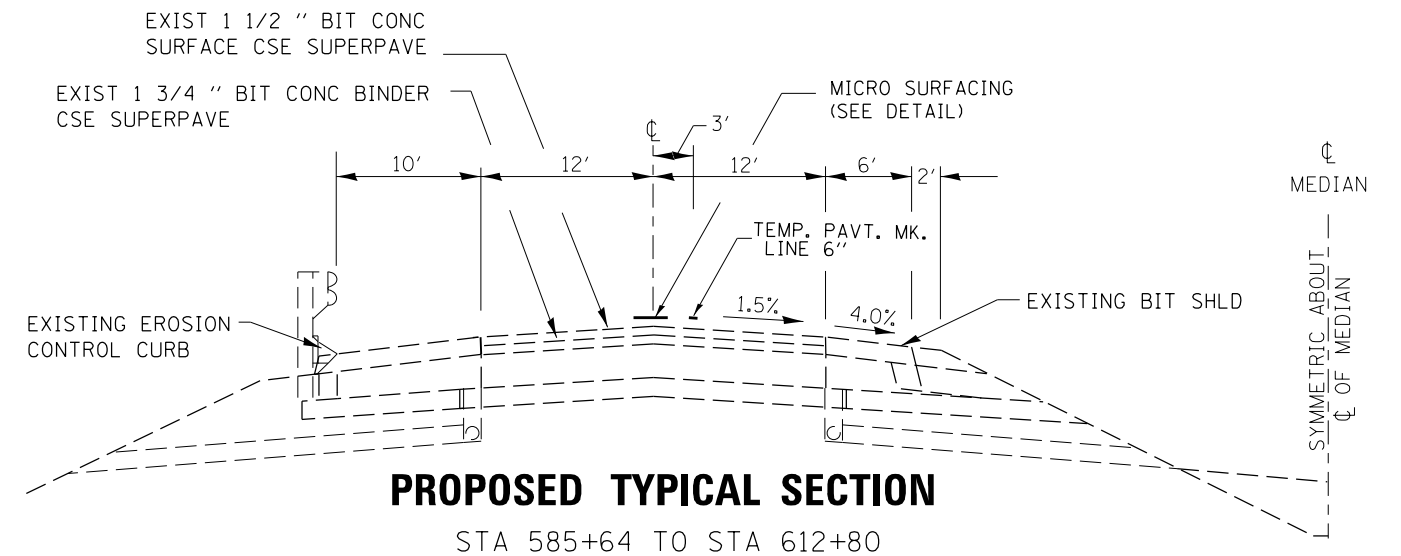
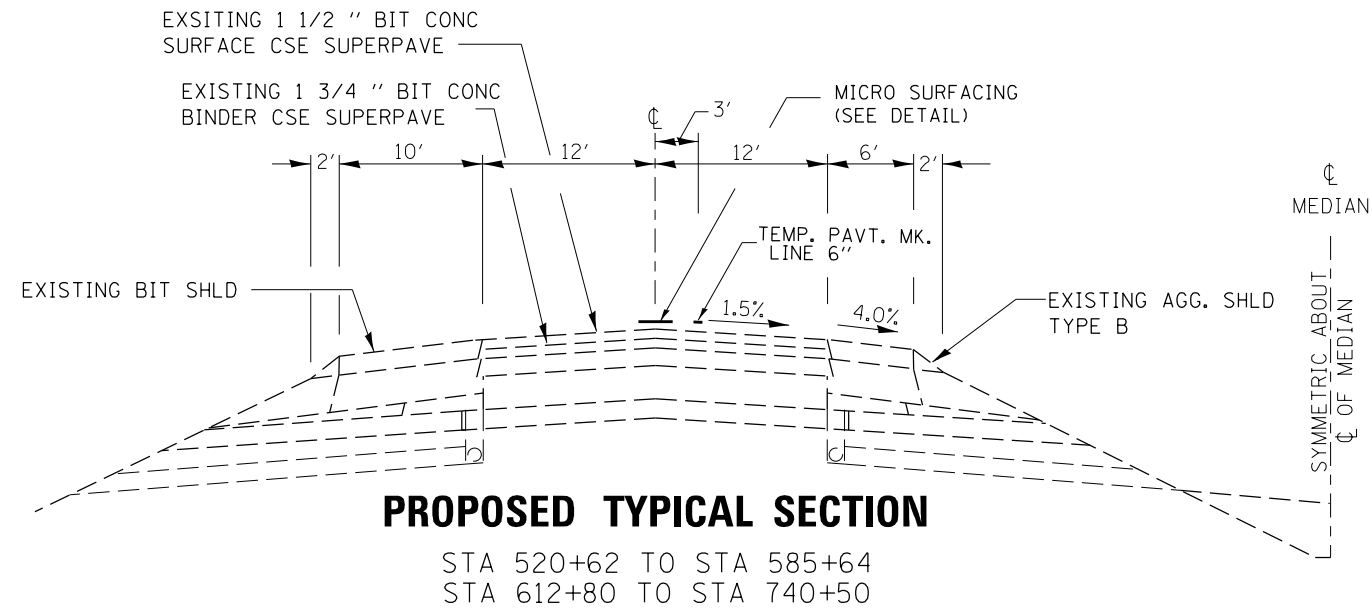
100% STATE

SUMMARY OF QUANTITIES				
CODE NO	ITEM	UNIT	TOTAL QUANTITY	CONSTRUCTION TYPE CODE
				RDWY 0005 RURAL
40600400	MIXTURE FOR CRACKS, JOINTS, AND FLANGWAYS	TON	2.3	2.3
67100100	MOBILIZATION	LSUM	1	1
70106800	CHANGEABLE MESSAGE SIGN	CAL MO	2	2
70300240	TEMPORARY PAVEMENT MARKING - LINE 6"	FOOT	10994	10994
70301000	WORK ZONE PAVEMENT MARKING REMOVAL	SQ FT	10994	10994
* 78005130	EPOXY PAVEMENT MARKING - LINE 6"	FOOT	10994	10994
* 78100100	RAISED REFLECTIVE PAVEMENT MARKER	EACH	1069	1069
78300200	RAISED REFLECTIVE PAVEMENT MARKING REMOVAL	EACH	1069	1069
X0326218	FIBER-MODIFIED ASPHALT CRACK SEALING	FOOT	42078	42078
X0326867	RADAR SPEED TRAILER	CAL MO	2	2
X0326880	MESSAGE BOARD VEHICLE DRIVER	HOUR	40	40
x4060100	BITUMINOUS MATERIALS (PRIME COAT), SPECIAL	POUND	381	381
X7010805	TRAFFIC CONTROL PROTECTION, STANDARD 701401 (SPECIAL)	LSUM	1	1
Z0063804	MICRO-SURFACING, SINGLE PASS TYPE II, MIXTURE D	SQ YD	7626	7626

14

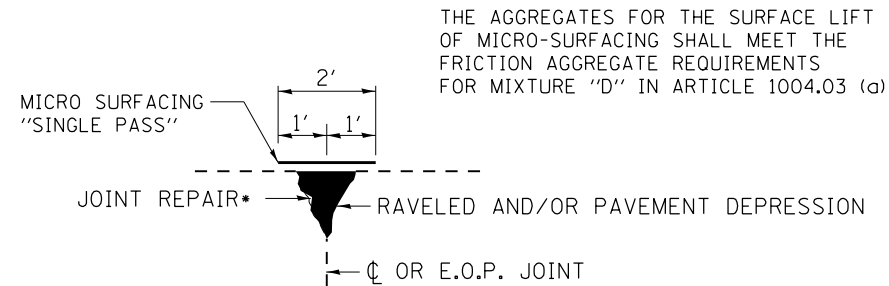
* Specialty Items

FILE NAME : c:\p\work\p\idot\mofaddenka\09328581\	USER NAME : mofaddenka 66C74-sh1-S00.dgn	DESIGNED - DRAWN -	REVISED - REVISED -	STATE OF ILLINOIS DEPARTMENT OF TRANSPORTATION	SUMMARY OF QUANTITIES				F.A.I. RTE. 57	SECTION (38-511-2	COUNTY IROQUOIS	TOTAL SHEETS 7	SHEET NO. 3
					SCALE:	SHEET NO.	OF	SHEETS	STA.	TO STA.	CONTRACT NO. 66C74		
					ILLINOIS/REG. AID PROJECT								



NOTES

- 1) MICRO-SURFACING SHALL BE LOCATED AT THE CENTERLINE OF PAVEMENT JOINT. ACTUAL LOCATIONS SHALL BE FIELD DETERMINED BY THE ENGINEER PRIOR TO THE CONTRACTOR BEGINNING HIS/HER CONSTRUCTION OPERATIONS.
- 2) THE TEMPORARY STRIPING SHALL BE OFFSET 3' FROM THE CENTERLINE. IN THE DRIVING LANE FIRST, PRIOR TO REMOVING EXISTING LANE.
- 3) OFFSET OF THE PERMANENT CENTERLINE PAVEMENT STRIPING AND RAISED REFLECTIVE PAVEMENT MARKERS SHALL BE FIELD DETERMINED BY THE ENGINEER.
- 4) ONLY THE PASSING LANE WILL BE CLOSED FOR CENTERLINE WORK.



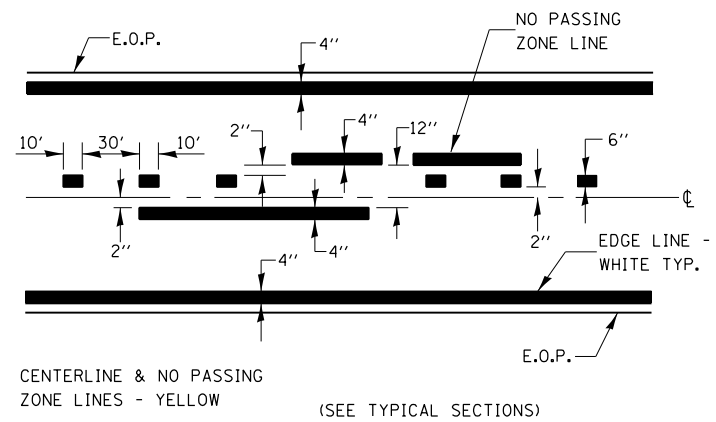
MICRO-SURFACING DETAIL

* MIXTURE FOR CRACKS, JOINTS, AND FLANGWAYS

FILE NAME =	USER NAME = mcfaddenka	DESIGNED -	REVISED -	STATE OF ILLINOIS DEPARTMENT OF TRANSPORTATION	TYPICAL SECTIONS			F.A.I. RTE.	SECTION	COUNTY	TOTAL SHEETS	SHEET NO.
c:\pw\work\p\dot\mcfaddenka\032858\0366C74-sht-schedule.dgn		DRAWN -	REVISED -		57	(38-5)1-2	IRROUOIS	7	4			
PLOT SCALE = 100.0000' / 1in.		CHECKED -	REVISED -		CONTRACT NO. 66C74							
PLOT DATE = 3/19/2013		DATE -	REVISED -		SCALE:	SHEET	OF	SHEETS	STA.	TO	STA.	ILLINOIS FED. AID PROJECT

MAINLINE SCHEDULE						
LOCATION I-57	SIDE	DESCRIPTION	LENGTH	MICROSURFACING SINGLE PASS TYPE II	BITUMINOUS MATERIAL PRIME COAT	MIXTURE FOR CRACKS, JOINTS, AND FLANGWAYS
			FOOT	SQ YD	POUND	TON
BEGIN PROJECT 1.2 MILES NORTH OF IL-54						
RURAL						
		BEGIN PROJECT	6395	2842	142	0.9
		STA. 520+62 TO 584+56.71				
		SN 050-0007/0008	107			
		STA. 584+56.71 TO 585+63.71				
		NB & SB	613	272	14	0.1
		STA. 585+63.71 TO 591+76.65				
		NB & SB	174			
		SN 050-0005/0006	991	440	22	0.1
		STA. 591+76.65 TO 593+50.65				
		NB & SB	227			
		SN 050-0003/0004	9161	4072	204	1.2
		STA. 603+41.22 TO 605+68.22				
		NB & SB	91			
		SN 050-0001/0002	845	375	19	0.1
		STA. 605+68.22 TO 697+29.50				
		NB & SB	740	329	16	0.1
		STA. 697+29.50 TO 698+20.50				
		NB	350			
		SB	350			
		STA. 698+20.50 TO 706+65				
		NB	350			
		SB	350			
		STA. 706+65 TO 710+15				
		NB	3035	1349	67	0.4
		SB	3035	1396	70	0.4
		CONCRETE PATCH	3140			
		END PROJECT				
		STA. 710+15 TO 740+50.00				
		NB				
		SB				
		STA. 709+10 TO 740+50.00				
		NB				
		SB				
		PROJECT TOTAL		7626	381	2.3

PAVEMENT MARKING SCHEDULE									
LOCATION I-57	SIDE	DESCRIPTION	LENGTH	EPOXY PAVT MK WHITE LINE 6''	SHORT TERM PAVT MK	TEMPORARY PAVT MK	WORK ZONE PAVT MK REMOVAL TEMP AND EX	RAISED REFLECTIVE PAVT MK	RAISED REFLECTIVE PAVT MK REMOVAL
			FOOT	FOOT	FOOT	FOOT	SQ FT	EACH	EACH
BEGIN PROJECT 1.2 MILES NORTH OF IL-54									
RURAL									
		BEGIN PROJECT	6395	3197	1279	3197	3197	320	320
		STA. 520+62 TO 584+56.71							
		NB & SB	107	54	21	54	54		
		SN 050-0007/0008	613	306	123	306	306	31	31
		STA. 584+56.71 TO 585+63.71							
		NB & SB	174	87	35	87	87		
		SN 050-0005/0006	991	495	198	495	495	50	50
		STA. 585+63.71 TO 591+76.65							
		NB & SB	227	114	45	114	114		
		SN 050-0003/0004	9161	4581	1832	4581	4581	458	458
		STA. 591+76.65 TO 593+50.65							
		NB & SB	91	46	18	46	46		
		SN 050-0001/0002	845	2115	846	2115	2115	211	211
		STA. 593+50.65 TO 603+41.22							
		NB & SB	4230	10994	4398	10994	10994	1069	1069
		END PROJECT							
		STA. 603+41.22 TO 605+68.22							
		NB & SB							
		STA. 605+68.22 TO 697+29.50							
		NB & SB							
		STA. 697+29.50 TO 698+20.50							
		NB & SB							
		STA. 698+20.50 TO 740+50.00							
		NB & SB							
		PROJECT TOTAL		10994	4398	10994	10994	1069	1069



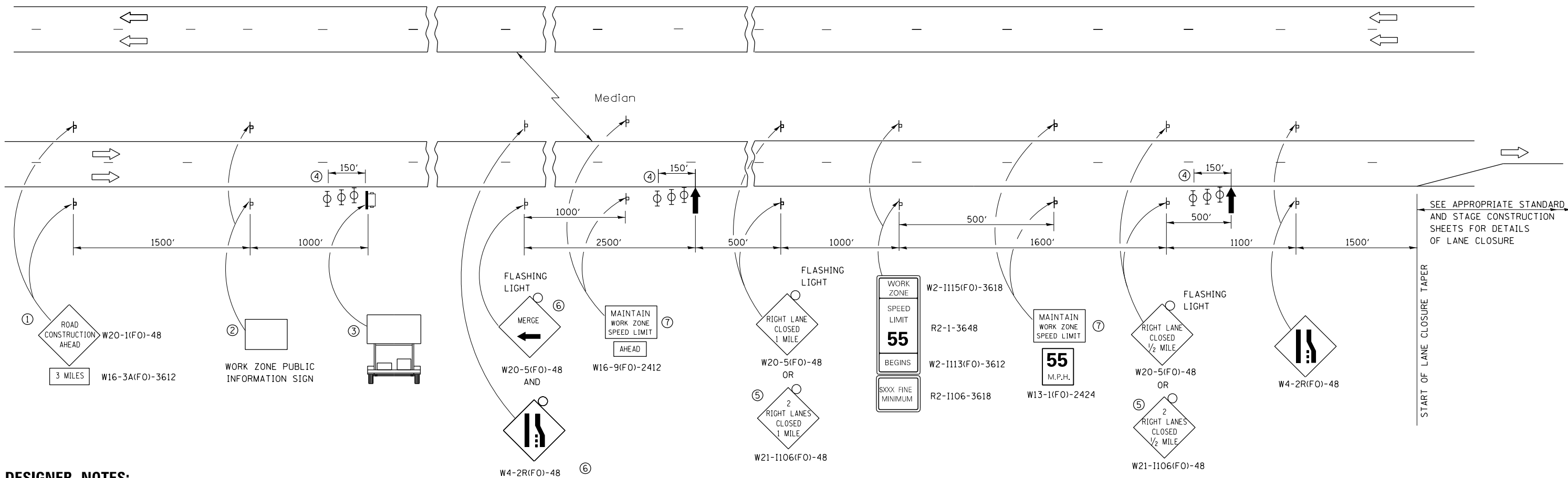
PAVEMENT MARKING

FILE NAME =	USER NAME = mcfaddenka	DESIGNED -	REVISED -
ct:\pw\work\p\dot\mcfaddenka\0328581\0366C74-sht-schedule.dgn		DRAWN -	REVISED -
	PLOT SCALE = 100.0000' / 1in.	CHECKED -	REVISED -
	PLOT DATE = 3/19/2013	DATE -	REVISED -

**STATE OF ILLINOIS
DEPARTMENT OF TRANSPORTATION**

DETAILS			
SCALE:	SHEET NO.	OF SHEETS	STA. TO STA.

F.A.I. RTE.	SECTION	COUNTY	TOTAL SHEETS	SHEET NO.
57	(38-5)1-2	IROQUOIS	7	6
CONTRACT NO. 66C74				
FED. ROAD DIST. NO. ILLINOIS FED. AID PROJECT				



DESIGNER NOTES:

DETAIL 701-10 IS TO BE USED ON ALL INTERSTATE PROJECTS. THE BUREAU OF CONSTRUCTION SHALL DETERMINE EITHER OPTION 1 OR 2.

ASK BUREAU OF CONSTRUCTION ON THE OFF-PEAK HOUR USAGE FOR PROJECT

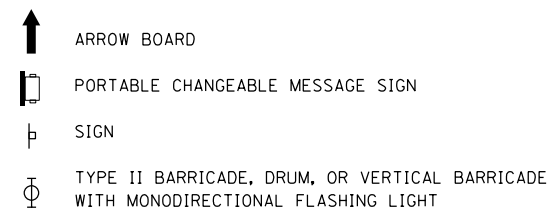
INCLUDE EXTRA MESSAGE BOARDS WHEN NEAR MAJOR INTERCHANGES

USE DISTRICT 3 SPECIAL PROVISION FOR TRAFFIC CONTROL AND PROTECTION, STANDARD 701400 (SPECIAL) AND 701401 (SPECIAL)

USE DISTRICT 3 SPECIAL PROVISION FOR PORTABLE VEHICLE MOUNTED CHANGEABLE MESSAGE SIGN

INCLUDE AN ALTERNATE ROUTE SIGNING DETOUR DETAIL IN PLANS

- ① THE ROAD CONSTRUCTION AHEAD SIGN SHALL BE LOCATED 3 MILES IN ADVANCE OF THE PROJECT LIMITS.
- ② THE MESSAGE AND SIZE OF THE WORK ZONE PUBLIC INFORMATION SIGN SHALL BE AS SPECIFIED BY THE DEPARTMENT.
- ③ TO BE PLACED IN THE MEDIAN WHEN FEASIBLE. THE MESSAGE BOARD SHALL BE USED TO DISPLAY STATUS OF LANES WITHIN THE PROJECT. THE PRIMARY MESSAGES SHALL BE:
"RIGHT LANE CLOSED" / " x MILES AHEAD"
"LEFT LANE CLOSED" / " x MILES AHEAD"
"ALL LANES OPEN"
- ④ THREE, TYPE II BARRICADES, DRUMS, OR VERTICAL BARRICADES AT 50' CENTERS.
- ⑤ THIS SIGN SHALL BE USED WHEN 2 LANES ARE CLOSED.
- ⑥ WHEN THE LEFT LANE IS CLOSED, SWITCH THESE TWO SIGNS AND THE DIRECTION OF THE MERGE ARROW.
- ⑦ 48"x36" FLUORESCENT ORANGE SIGN WITH BLACK LETTERS.
48"
36" MAINTAIN WORK ZONE SPEED LIMIT 8" 6" 6"



GENERAL NOTE:

THIS STANDARD IS USED WHERE AT ANY TIME A LANE IS CLOSED ON A FREEWAY/EXPRESSWAY.
WHEN THE LEFT LANE IS CLOSED, LEFT LANE CLOSED SIGNS SHALL BE SUBSTITUTED FOR THE RIGHT LANE CLOSED SIGNS.
THE FIRST TWO SIGNS AND THE MESSAGE BOARD ARE STATIONARY. THE OTHER SIGNS AND ARROWBOARDS SHALL BE MOVED AS NECESSARY TO MAINTAIN THE REQUIRED DISTANCE FROM THE START OF THE LANE CLOSURE TAPER(S).
SEE SPECIAL PROVISIONS.

ALL DIMENSIONS ARE IN INCHES UNLESS OTHERWISE SHOWN.

FILE NAME =	USER NAME = mcfaddenka	DESIGNED -	REVISED -	STATE OF ILLINOIS DEPARTMENT OF TRANSPORTATION	STANDARD 701400 (SPECIAL)	F.A.I. RTE.	SECTION	COUNTY	TOTAL SHEETS	SHEET NO.	
es:\pw\work\p\idot\mcfaddenka\0328581\0366C74-sht-schedule.dgn		DRAWN -	REVISED -			57	(38-5)1-2	IRROUOIS	7	7	
PLOT SCALE = 100.0000' / 1"		CHECKED -	REVISED -			CONTRACT NO. 66C74					
PLOT DATE = 3/19/2013		DATE -	REVISED -			FED. ROAD DIST. NO. ILLINOIS FED. AID PROJECT					