

F.A.S. RTE.	SECTION	COUNTY	TOTAL SHEETS	SHEET NO.
1252	(24)T	BUREAU	7	1
		ILLINOIS	CONTRACT NO. 66C75	

*7+1=8

D-93-002-13

STATE OF ILLINOIS
DEPARTMENT OF TRANSPORTATION
DIVISION OF HIGHWAYS
**PROPOSED
HIGHWAY PLANS**

FAS ROUTE 1252 (IL 29)
SECTION (24)T

PIPE CULVERT REPAIR
BUREAU COUNTY

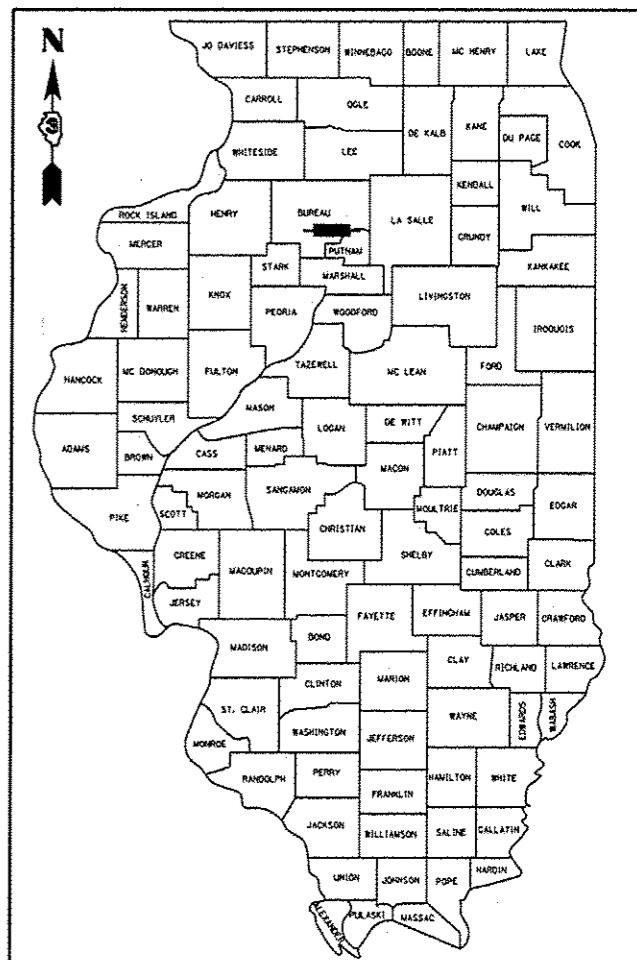
C-93-045-13

INDEX OF SHEETS

- COVER SHEET
- GENERAL NOTES
- SUMMARY OF QUANTITIES
- TYPICAL SECTION
- GENERAL ROADWAY PLAN
- EXISTING DETAILS
- RECONSTRUCTION DETAILS
- CONCRETE COLLAR DETAILS

STANDARDS

- | | |
|-----------|--|
| 000001-06 | STANDARD SYMBOLS, ABBREVIATIONS AND PATTERNS |
| 001001-02 | AREAS OF REINFORCEMENT BARS |
| 001006 | DECIMAL OF AN INCH AND OF A FOOT |
| 280001-07 | TEMPORARY EROSION CONTROL SYSTEMS |
| 542401-01 | METAL END SECTION FOR PIPE CULVERTS |
| 630106-01 | LONG-SPAN GUARDRAIL OVER CULVERT |
| 701001-02 | OFF-ROAD OPERATIONS 2L, 2W, MORE THAN 15' (4.5 m) AWAY |
| 701006-04 | OFF-ROAD OPERATIONS 2L, 2W, 15' (4.5 m) TO 24" (600 mm) FROM PAVEMENT EDGE |
| 701201-04 | LANE CLOSURE, 2L, 2W, DAY ONLY, FOR SPEEDS **e** 45 MPH |
| 701301-04 | LANE CLOSURE, 2L, 2W, SHORT TIME OPERATIONS |
| 701901-02 | TRAFFIC CONTROL DEVICES |



LOCATION OF SECTION INDICATED THIS: -- [black bar] --

MAJOR COLLECTOR	
FAS 1252 (IL 29)	
2011	
ADT	1150
P.V.	95%
S.U.	3.5%
M.U.	1.5%

STATE OF ILLINOIS
DEPARTMENT OF TRANSPORTATION
DIVISION OF HIGHWAYS

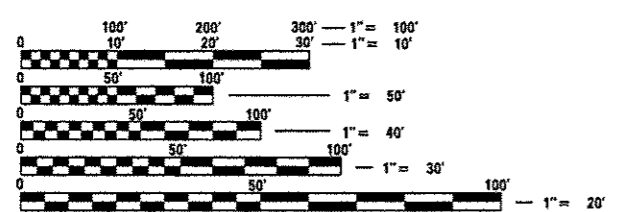
SUBMITTED 4-3-23
Paul A. Carlson
DEPUTY DIRECTOR OF HIGHWAYS, REGION ENGINEER

May 10 2013
John D. Baramelli PE, EIT
ENGINEER OF DESIGN AND ENVIRONMENT

May 10 2013
Omair Osman PE, EIT
DIRECTOR OF HIGHWAYS, CHIEF ENGINEER

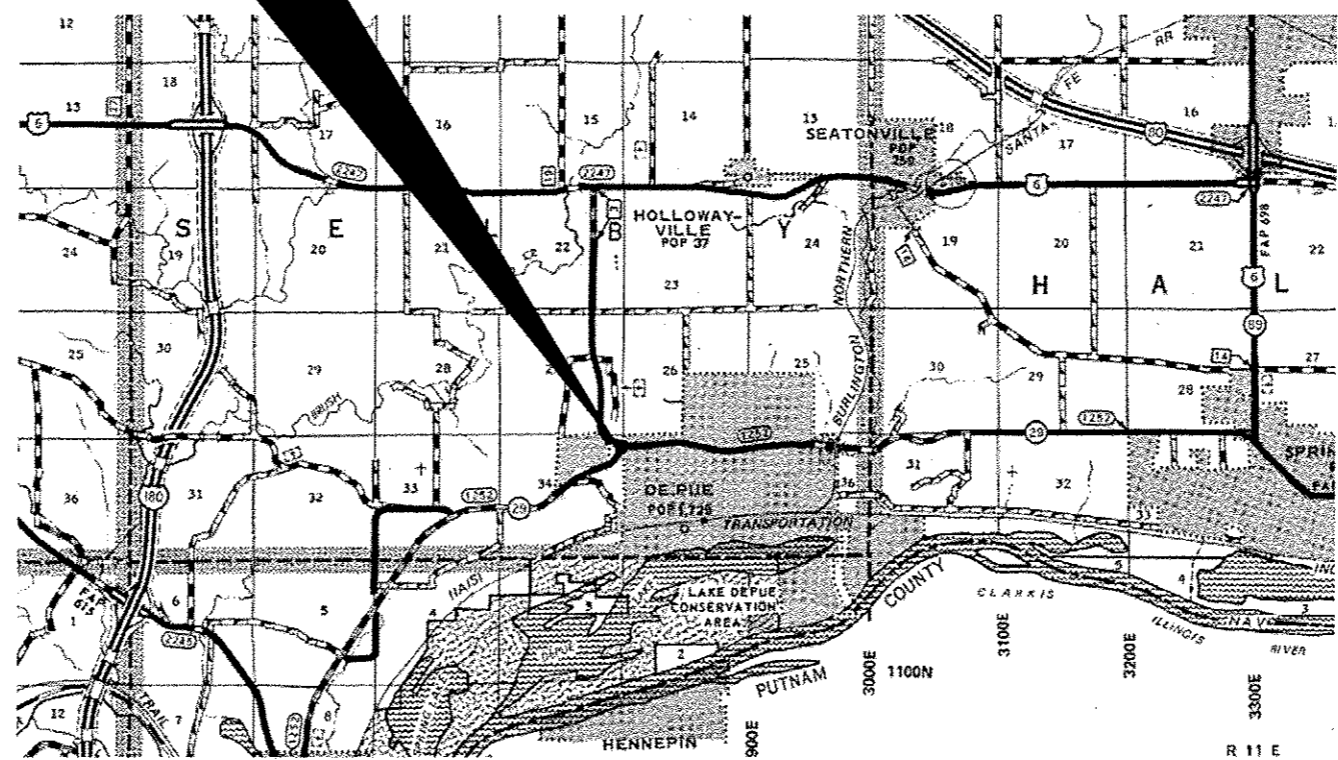
PROJECT LOCATION
STA. 72 + 50

36" CMP OVER
2' X 2' CONCRETE
BOX CULVERT
JUST WEST OF IL-29 &
DEPUE SPUR INTERSECTION



FULL SIZE PLANS HAVE BEEN PREPARED USING STANDARD ENGINEERING SCALES. REDUCED SIZED PLANS WILL NOT CONFORM TO STANDARD SCALES. IN MAKING MEASUREMENTS ON REDUCED PLANS, THE ABOVE SCALES MAY BE USED.

J.U.L.I.E.
JOINT UTILITY LOCATION INFORMATION FOR EXCAVATION
1-800-892-0123
OR 811



LOCATION MAP
NOT TO SCALE
POINT LOCATION

PROJECT ENGINEER JOE KANNEL, PE
PROJECT MANAGER RON WOODSHANK
TOWNSHIP SELBY
CONTRACT NO. 66C75

PRINTED BY THE AUTHORITY
OF THE STATE OF ILLINOIS