

INDEX OF SHEETS

1. COVER SHEET
2. GENERAL NOTES
3. SUMMARY OF QUANTITIES
4. TYPICAL SECTION
5. GENERAL ROADWAY PLAN
6. EXISTING DETAILS
7. RECONSTRUCTION DETAILS
8. CONCRETE COLLAR DETAILS

STANDARDS

- |           |  |
|-----------|--|
| 000001-06 | STANDARD SYMBOLS, ABBREVIATIONS AND PATTERNS                               |
| 001001-02 | AREAS OF REINFORCEMENT BARS  |
| 001006    | DECIMAL OF AN INCH AND OF A FOOT   |
| 280001-07 | TEMPORARY EROSION CONTROL SYSTEMS  |
| 542401-01 | METAL END SECTION FOR PIPE CULVERTS  |
| 630106-01 | LONG-SPAN GUARDRAIL OVER CULVERT   |
| 701001-02 | OFF-ROAD OPERATIONS 2L, 2W, MORE THAN 15' (4.5 m) AWAY                     |
| 701006-04 | OFF-ROAD OPERATIONS 2L, 2W, 15' (4.5 m) TO 24" (600 mm) FROM PAVEMENT EDGE |
| 701201-04 | LANE CLOSURE, 2L, 2W, DAY ONLY, FOR SPEEDS **e** 45 MPH                    |
| 701301-04 | LANE CLOSURE, 2L, 2W, SHORT TIME OPERATIONS                                |
| 701901-02 | TRAFFIC CONTROL DEVICES  |

STATE OF ILLINOIS  
DEPARTMENT OF TRANSPORTATION  
DIVISION OF HIGHWAYS  
**PROPOSED  
HIGHWAY PLANS**

FAS ROUTE 1252 (IL 29)  
SECTION (24)T

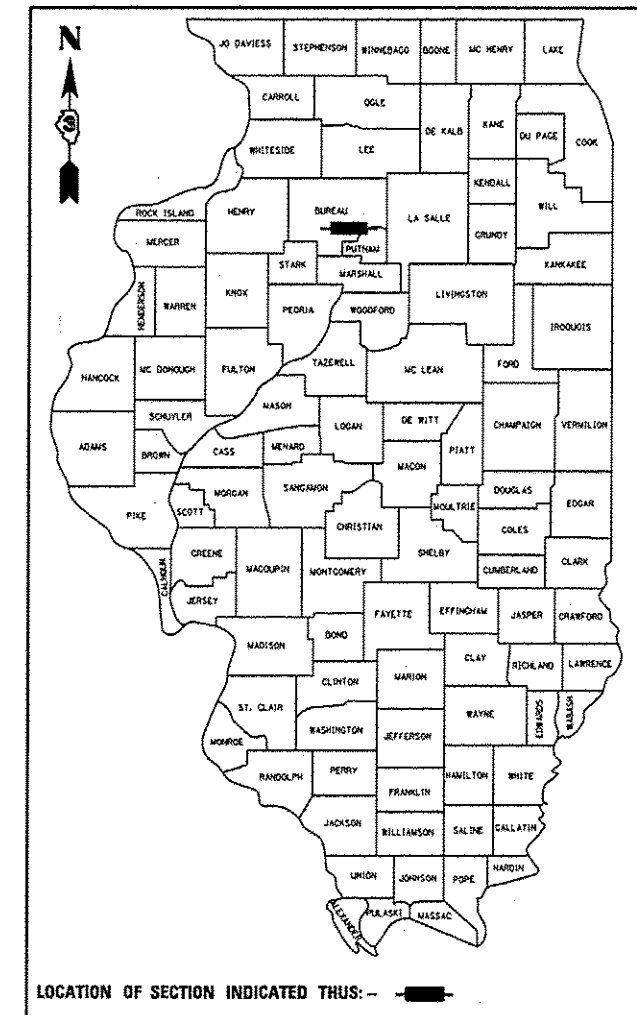
PIPE CULVERT REPAIR  
BUREAU COUNTY

C-93-045-13

F.A.S. RTE.	SECTION	COUNTY	TOTAL SHEETS	SHEET NO.
1252	(24)T	BUREAU	7	1
		ILLINOIS	CONTRACT NO. 66C75	

\*7+1=8

D-93-002-13



LOCATION OF SECTION INDICATED THIS: -- [black bar] --

MAJOR COLLECTOR	
FAS 1252 (IL 29)	
2011	
ADT	1150
P.V.	95%
S.U.	3.5%
M.U.	1.5%

STATE OF ILLINOIS  
DEPARTMENT OF TRANSPORTATION  
DIVISION OF HIGHWAYS

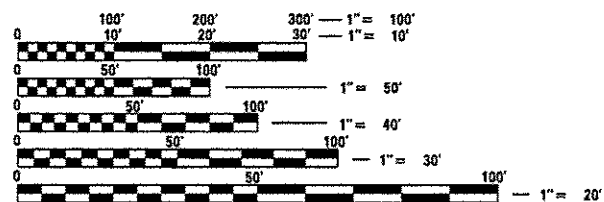
SUBMITTED: *4-3-2013*  
*Paul A. Carlson*  
DEPUTY DIRECTOR OF HIGHWAYS, REGION ENGINEER

*May 10 2013*  
*John D. Baramelli PE, EIT*  
ENGINEER OF DESIGN AND ENVIRONMENT

*May 10 2013*  
*Omair Osman PE, EIT*  
DIRECTOR OF HIGHWAYS, CHIEF ENGINEER

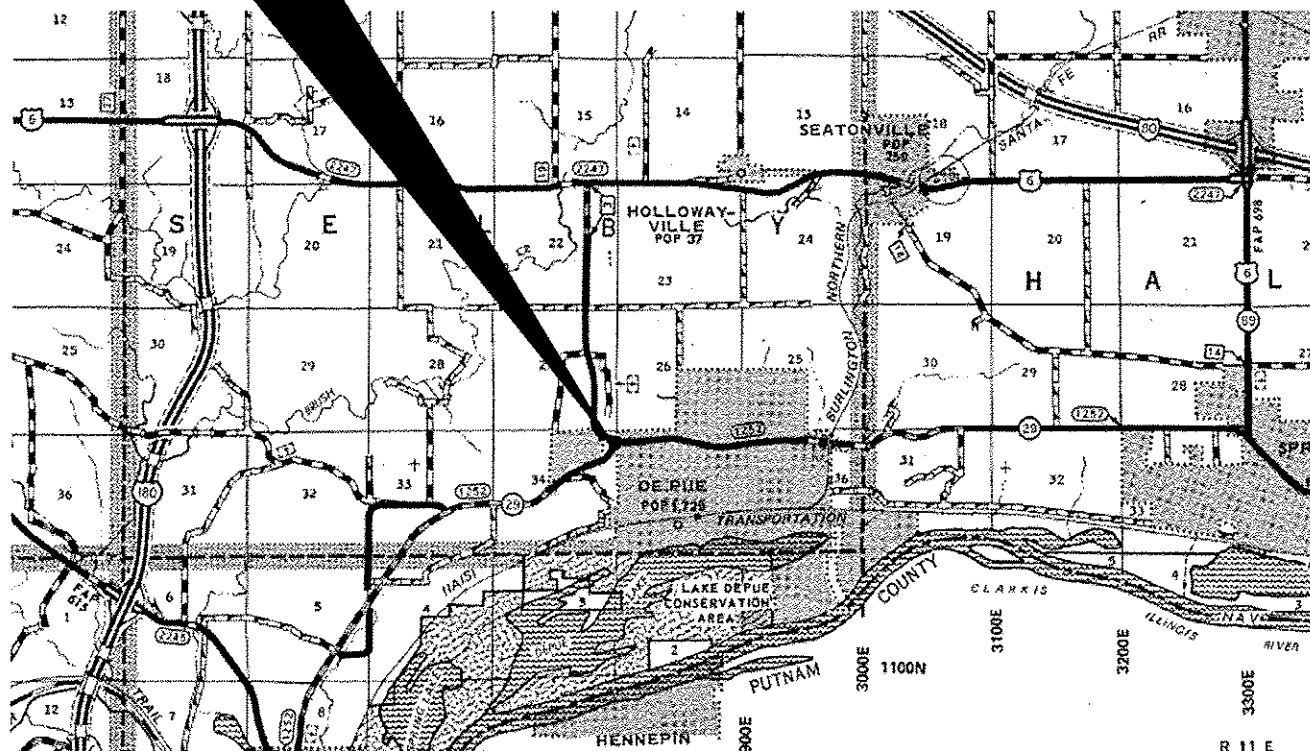
PROJECT LOCATION  
STA. 72 + 50

36" CMP OVER  
2' X 2' CONCRETE  
BOX CULVERT  
JUST WEST OF IL-29 &  
DEPUE SPUR INTERSECTION



FULL SIZE PLANS HAVE BEEN PREPARED USING STANDARD ENGINEERING SCALES. REDUCED SIZED PLANS WILL NOT CONFORM TO STANDARD SCALES. IN MAKING MEASUREMENTS ON REDUCED PLANS, THE ABOVE SCALES MAY BE USED.

J.U.L.I.E.  
JOINT UTILITY LOCATION INFORMATION FOR EXCAVATION  
1-800-892-0123  
OR 811



LOCATION MAP  
NOT TO SCALE  
POINT LOCATION

PROJECT ENGINEER JOE KANNEL, PE  
PROJECT MANAGER RON WOODSHANK  
TOWNSHIP SELBY  
CONTRACT NO. 66C75

PRINTED BY THE AUTHORITY  
OF THE STATE OF ILLINOIS

**GENERAL NOTES**

PLAN DIMENSIONS AND DETAILS RELATIVE TO EXISTING PLANS ARE SUBJECT TO NOMINAL CONSTRUCTION VARIATIONS. THE CONTRACTOR SHALL FIELD VERIFY EXISTING DIMENSIONS AND DETAILS AFFECTING NEW CONSTRUCTION AND MAKE NECESSARY APPROVED ADJUSTMENTS PRIOR TO CONSTRUCTION OR ORDERING OF MATERIALS. SUCH VARIATIONS SHALL NOT BE CAUSE FOR ADDITIONAL COMPENSATION FOR A CHANGE IN SCOPE OF WORK; HOWEVER, THE CONTRACTOR WILL BE PAID FOR THE QUANTITY ACTUALLY FURNISHED AT THE UNIT PRICE BID FOR THE WORK.

BEFORE ORDERING PIPE CULVERTS OR PIPE DRAINS, THE CONTRACTOR SHALL CONSULT THE ENGINEER FOR EXACT LENGTHS.

SEEDING WILL NOT BE PERMITTED AT ANY TIME WHEN THE GROUND IS FROZEN, WET, OR IN AN UNTILLABLE CONDITION. LOCATIONS TO BE SEEDED WILL BE DETERMINED BY THE ENGINEER.

ONLY THOSE TREES DESIGNATED BY THE ENGINEER OR LISTED IN THE TREE REMOVAL SCHEDULE SHALL BE REMOVED. THE CONTRACTOR SHALL PROTECT ALL REMAINING TREES FROM DAMAGE DUE TO HIS OPERATIONS.

THE FINISHED EARTHWORK SHALL HAVE A VEGETATION SUSTAINING SOIL COVERING THE TOP FOUR INCHES IN AREAS TO BE SEEDED OR SODDED THE VEGETATION SUSTAINING SOIL REQUIRED WILL NOT BE PAID FOR SEPARATELY BUT WILL BE INCLUDED IN THE COST OF

ALL ELEVATIONS REFERRING TO U.S.G.S. MEAN SEA LEVEL DATUM.

ABANDONED UNDERGROUND UTILITIES THAT CONFLICT WITH CONSTRUCTION SHALL BE DISPOSED OF OUTSIDE THE LIMITS OF THE RIGHT OF WAY ACCORDING TO ARTICLE 202.03 OF THE STANDARD SPECIFICATIONS AND AS DIRECTED BY THE ENGINEER. THIS WORK WILL NOT BE PAID FOR SEPARATELY, BUT WILL BE INCLUDED IN THE COST OF EARTH EXCAVATION.

ANY REFERENCE TO A STANDARD IN THESE PLANS SHALL BE INTERPRETED TO MEAN THE EDITION AS INDICATED BY THE SUBNUMBER SHOWN IN THE LIST OF STANDARDS OR THE COPY INCLUDED IN THESE PLANS.

ALL ELEVATIONS REFERRING TO U.S.G.S. MEAN SEA LEVEL DATUM.

THE WORK REQUIRED TO CONNECT ANY SEWER TO AN EXISTING DRAINAGE STRUCTURE OR PIPE WILL NOT BE PAID FOR SEPARATELY, BUT WILL BE CONSIDERED AS INCLUDED IN THE CONTRACT UNIT PRICE BID FOR THE SEWER ITEMS.

THE CONTRACTOR SHALL CONTACT JULIE AT LEAST 48 HOURS PRIOR TO EXCAVATION TO DETERMINE WHICH UTILITIES ARE IN THE AREA.

**COMMITMENTS**

DISPOSAL OF EXCAVATED MATERIALS. ALL UNSUITABLE OR UNSTABLE MATERIALS, DEFINED AS SOILS, EMBANKMENTS, SUB-BASE GRANULAR MATERIALS, AND/OR AGGREGATE MATERIALS THAT ARE EXCAVATED DUE TO CONSTRUCTION OPERATIONS SHALL BE DISPOSED OF WITHIN THE LIMITS OF THE EXISTING RIGHT OF WAY. DISPOSAL OF EXCAVATED MATERIALS, AS DEFINED ABOVE, OFF THE EXISTING RIGHT OS WAY SHALL NOT BE PERMITTED.

EXCAVATED MATERIALS SHALL BE DISPOSED OF AT LOCATIONS DIRECTED BY THE ENGINEER. ANY SUCH DISPOSAL SHALL NOT CREATE AND UNSIGHTLY OR OBJECTIONABLE APPEARANCE OR DETRACT FROM THE NATURAL TOPOGRAPHIC FEATURES WITHOUT WRITTEN PERMISSION FROM THE ENGINEER.

DATE: 4-3-2013

PREPARED BY: Dave Braverman  
DISTRICT STUDIES & PLANS ENGINEER

EXAMINED BY: [Signature]  
DISTRICT CONSTRUCTION ENGINEER

Wayne L. Phillips  
DISTRICT MATERIALS ENGINEER

Bruce A. Anker  
DISTRICT OPERATIONS ENGINEER

FILE NAME *	USER NAME * petelyj	DESIGNED -	REVISED -
cr\pv_work\widot\petelyj\0320372\036675-ahf-details.dgn		DRAWN -	REVISED -
	PLOT SCALE * 100.0000 / / in.	CHECKED -	REVISED -
#MODELNAME#	PLOT DATE * 4/3/2013	DATE -	REVISED -

STATE OF ILLINOIS  
DEPARTMENT OF TRANSPORTATION

**GENERAL NOTES**

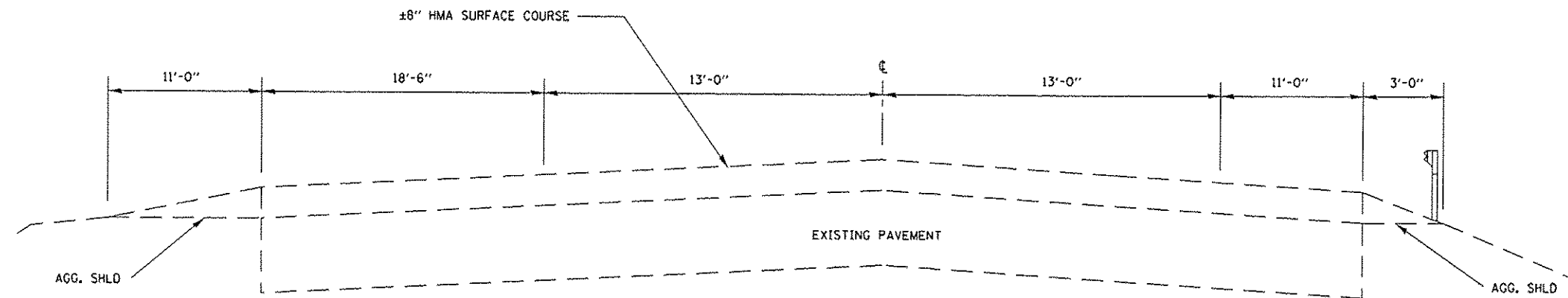
SCALE: SHEET 1 OF 1 SHEETS STA. TO STA.

F.A.S RTE.	SECTION	COUNTY	TOTAL SHEETS	SHEET NO.
1252	(24T)		7	1A
			CONTRACT NO. 66C75	
[ILLINOIS] FED. AID PROJECT				

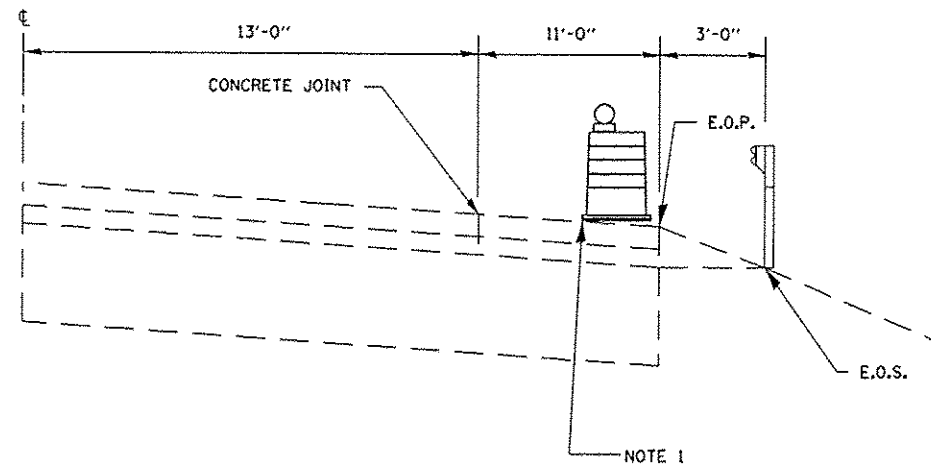
CODE NO.	ITEM	UNIT	CONSTR. CODE
			STATE FUNDS 100% STATE STRUCTURE 0044 RURAL
20100110	TREE REMOVAL (6 TO 15 UNITS DIAMETER)	UNIT	6
28000400	PERIMETER EROSION BARRIER	FOOT	50
28100807	STONE DUMPED RIPRAP, CLASS A4	TON	10
48101200	AGGREGATE SHOULDERS, TYPE B	TON	2
50105220	PIPE CULVERT REMOVAL	FOOT	14
54213891	STEEL END SECTIONS 36"	EACH	1
54248510	CONCRETE COLLAR	CU YD	1.2
542D1081	PIPE CULVERTS, CLASS D, TYPE 2 36"	FOOT	9
63301210	REMOVE AND REERECT STEEL PLATE BEAM GUARDRAIL, TYPE A	FOOT	25
<i>67100100</i>	<i>MOBILIZATION</i>	<i>L SUM</i>	<i>1</i>
70100450	TRAFFIC CONTROL AND PROTECTION, STANDARD 701201	L SUM	1
X2020502	BRACED EXCAVATION	CU YD	25
Z0023200	FILLING DRAINAGE STRUCTURES	EACH	1

13

Rev.



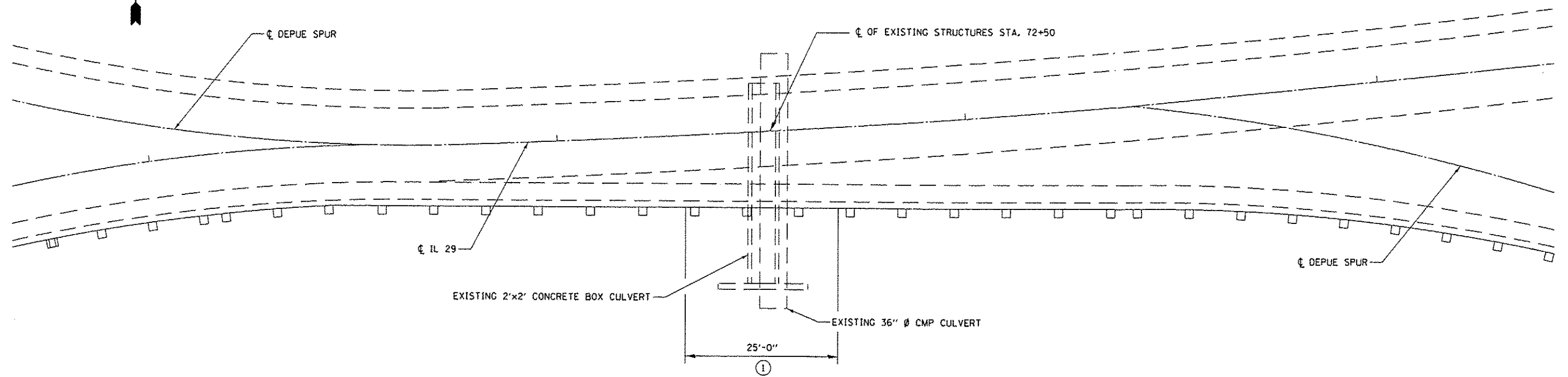
**TYPICAL SECTION**



**TYPICAL SECTION**

NOTE 1:  
 DRUMS WITH STEADY BURNING BI-DIRECTIONAL LIGHT  
 SHALL BE SET WHEN THE CONTRACTOR AND THE  
 CONTRACTORS PERSONNEL ARE NOT PRESENT.

FILE NAME =	USER NAME = patelij	DESIGNED -	REVISED -	<b>STATE OF ILLINOIS DEPARTMENT OF TRANSPORTATION</b>	<b>TYPICAL SECTION</b>	F.A.S RTE.	SECTION	COUNTY	TOTAL SHEETS	SHEET NO.	
ci:\pw_work\p\ridat\patelij\60320372\035675-ahs-detail.dgn		DRAWN -	REVISED -			1252	(241)	BUREAU	7	3	
#MODELNAME*	PLOT SCALE = 100.0000' / in.	CHECKED -	REVISED -			CONTRACT NO. 66C75					
	PLOT DATE = 4/3/2013	DATE -	REVISED -			ILLINOIS FED. AID PROJECT					
					SCALE:	SHEET 1 OF 1 SHEETS		STA.	TO STA.		



**PLAN**  
 STA. 72+50  
 36" CMP CULVERT OVER  
 2' X 2'  
 RC BOX CULVERT

**LEGEND**  
 ① REMOVE AND RE-ERECT STEEL PLATE BEAM GUARDRAIL, (SPECIAL)  
 SEE SPECIAL PROVISIONS

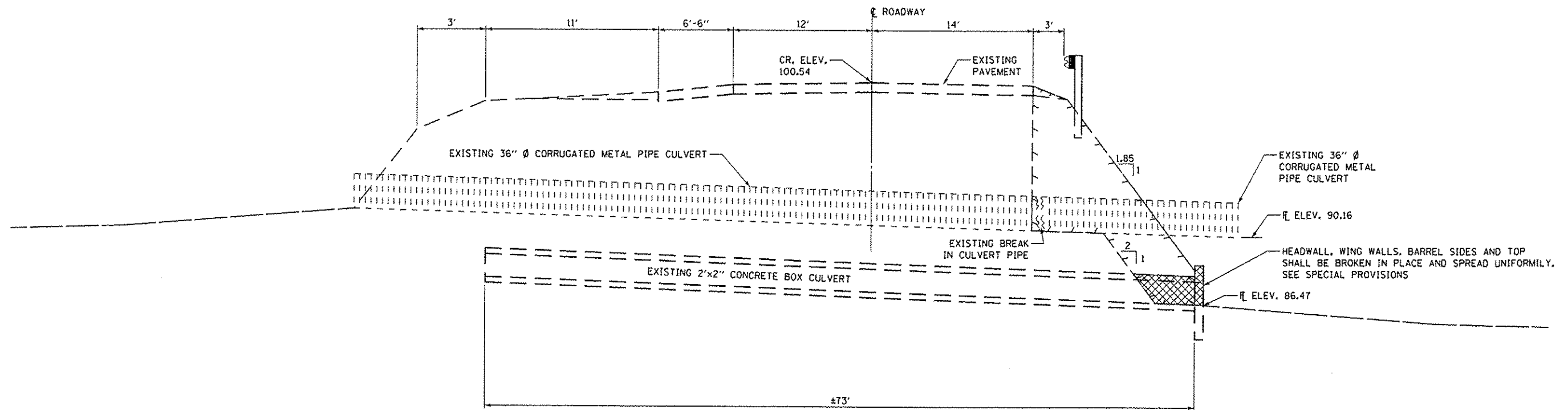
FILE NAME =	USER NAME = patelvj	DESIGNED -	REVISED -
ct\pw_work\pvidat\patelvj\08220372\0366	75-ahd-detailed.dgn	DRAWN -	REVISED -
#MODELNAME#	PLOT SCALE = 100.0000' / in.	CHECKED -	REVISED -
	PLOT DATE = 4/3/2013	DATE -	REVISED -

STATE OF ILLINOIS  
 DEPARTMENT OF TRANSPORTATION

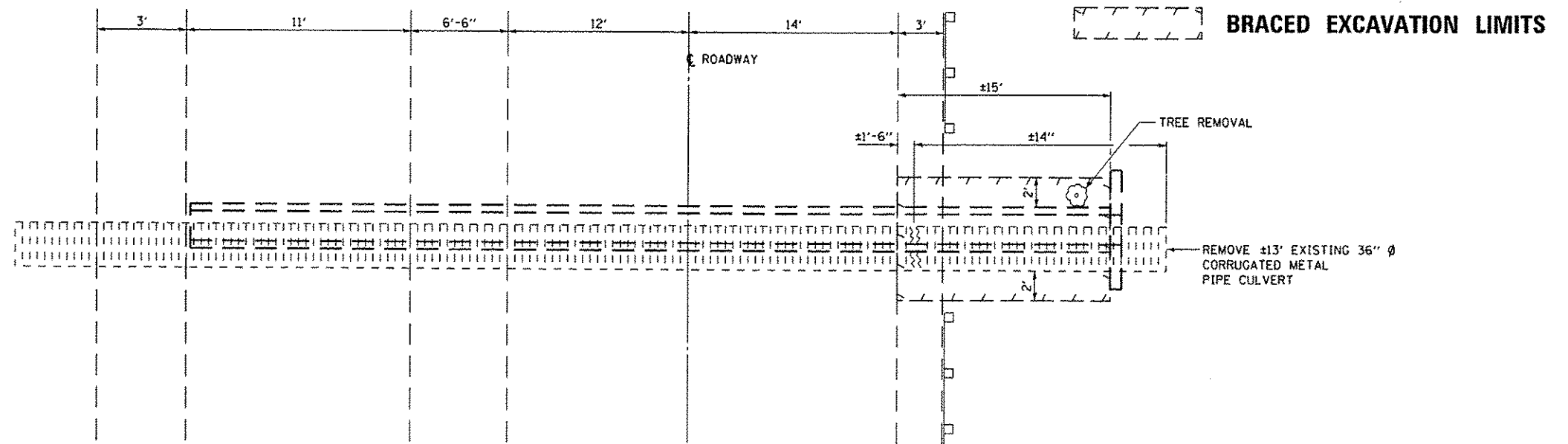
**GENERAL ROADWAY DETAILS**

SCALE: SHEET 1 OF 1 SHEETS STA. TO STA.

F.A.S. RTE.	SECTION	COUNTY	TOTAL SHEETS	SHEET NO.
1252	(241)		7	4
BUREAU			CONTRACT NO. 66C75	
ILLINOIS FED. AID PROJECT				

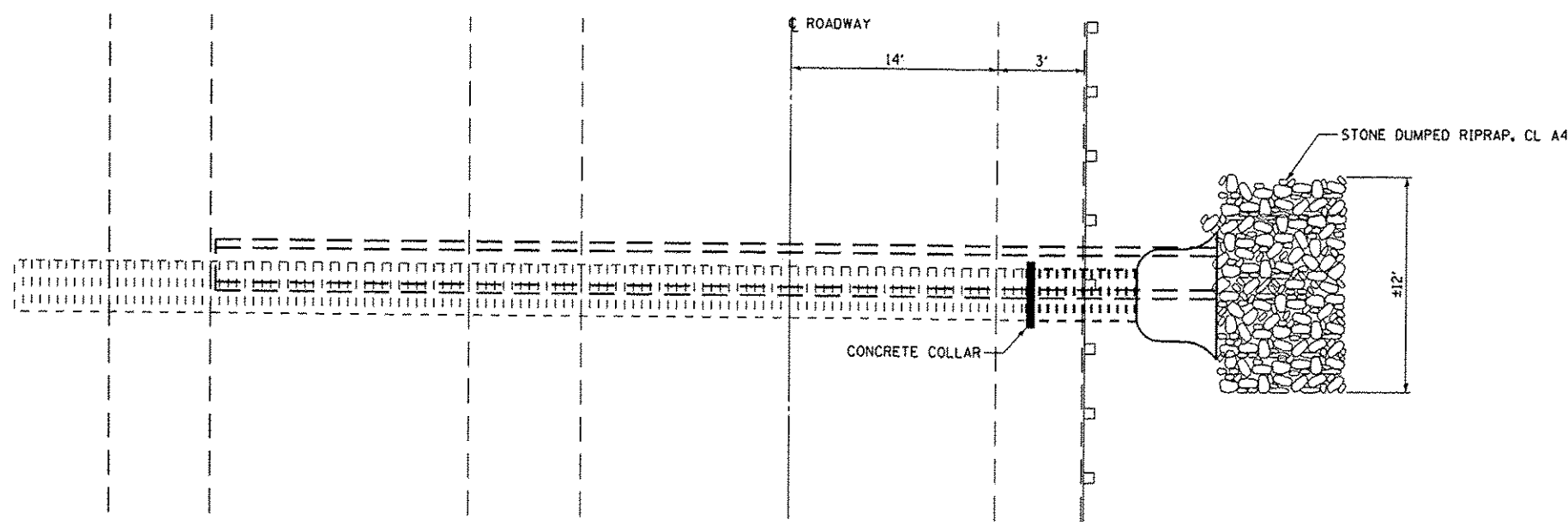
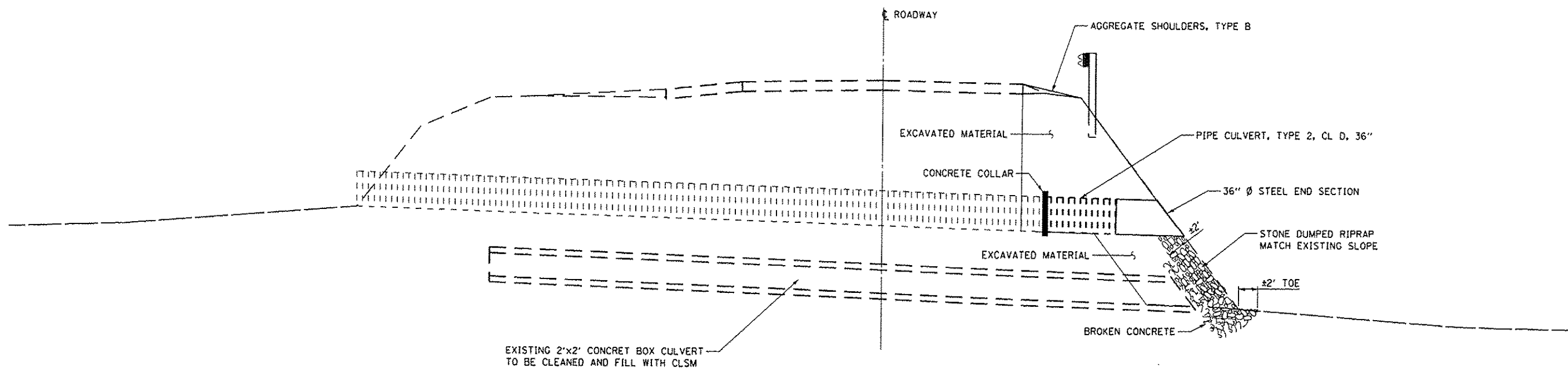


**ELEVATION  
LOOKING EAST**



**PLAN**

FILE NAME =	USER NAME = patelij	DESIGNED -	REVISED -	<b>STATE OF ILLINOIS DEPARTMENT OF TRANSPORTATION</b>	<b>EXISTING DETAILS</b>	F.A.S RTE.	SECTION	COUNTY	TOTAL SHEETS	SHEET NO.	
c:\pwwork\pvidot\patelij\0328372\0366	75-sht-details.dgn	DRAWN -	REVISED -			1252	(24T)		BUREAU	7	5
#MODELNAME#	PLOT SCALE = 100.0000 / 1 in.	CHECKED -	REVISED -			CONTRACT NO. 66C75					
	PLOT DATE = 4/3/2013	DATE -	REVISED -			ILLINOIS FED. AID PROJECT					



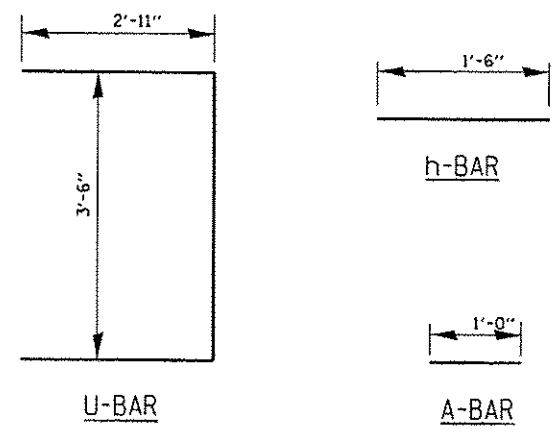
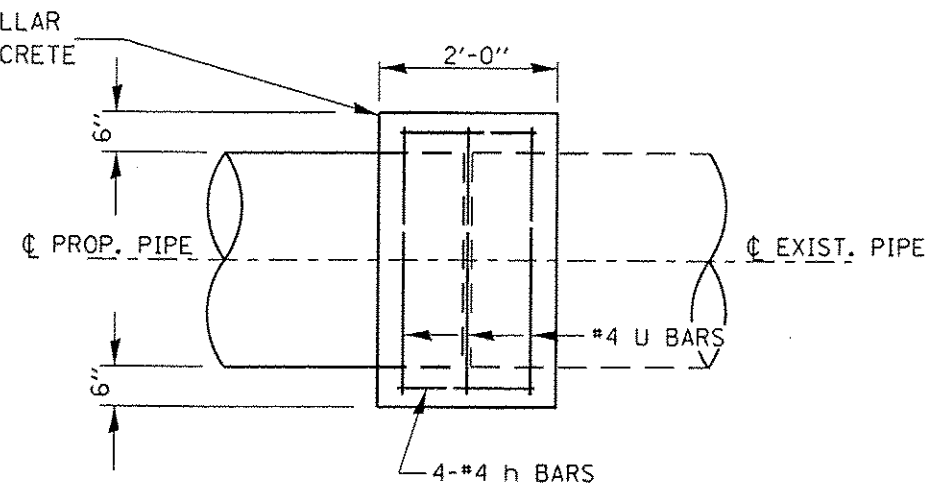
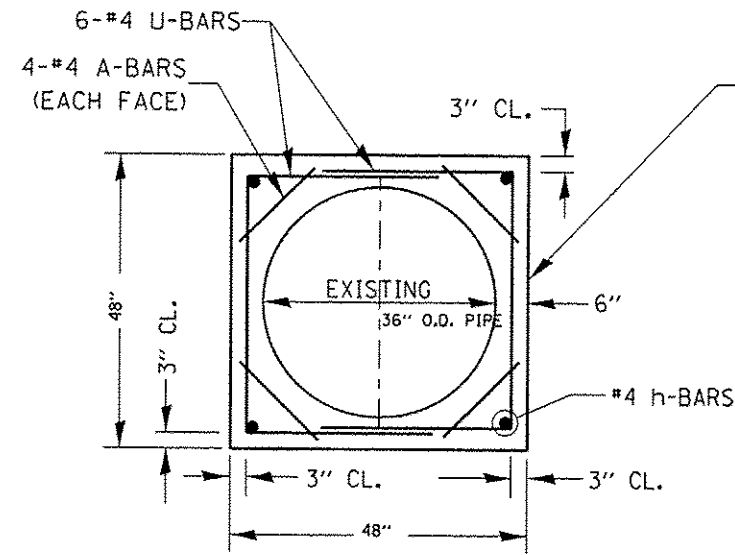
FILE NAME =	USER NAME = patelijj	DESIGNED -	REVISED -
c:\pwwork\p\idat\patelijj\100320372\0366475-sht-detail.dgn		DRAWN -	REVISED -
	PLOT SCALE = 100.0000' / in.	CHECKED -	REVISED -
MODELNAME =	PLOT DATE = 4/3/2013	DATE -	REVISED -

**STATE OF ILLINOIS  
DEPARTMENT OF TRANSPORTATION**

**RECONSTRUCTION DETAILS**

SCALE: SHEET 1 OF 1 SHEETS STA. TO STA.

F.A.S RTE.	SECTION	COUNTY	TOTAL SHEETS	SHEET NO.
1252	(247)	BUREAU	7	6
CONTRACT NO. 66C75				
ILLINOIS FED. AID PROJECT				



**BILL OF MATERIAL**

BAR	NO.	SIZE	LENGTH	SHAPE
a-BAR	8	#4	1'-0"	—
h-BAR	4	#4	1'-6"	┌┐
u-BAR	6	#4	9'-4"	—
CONCRETE COLLAR			CU YD	1
REINFORCEMENT BARS			POUNDS	50

**COLLAR DETAIL (DIRECT PIPE CULVERT EXTENSION)**