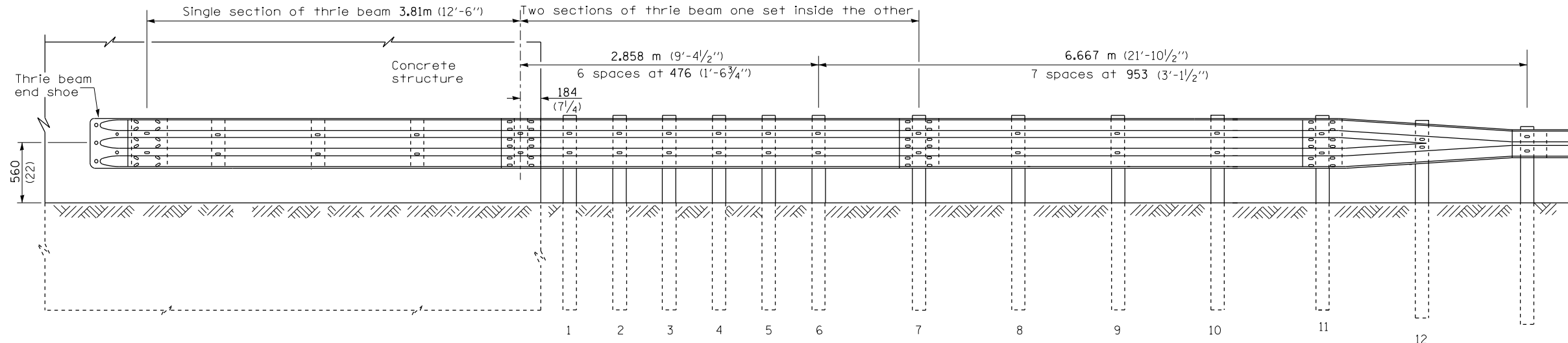


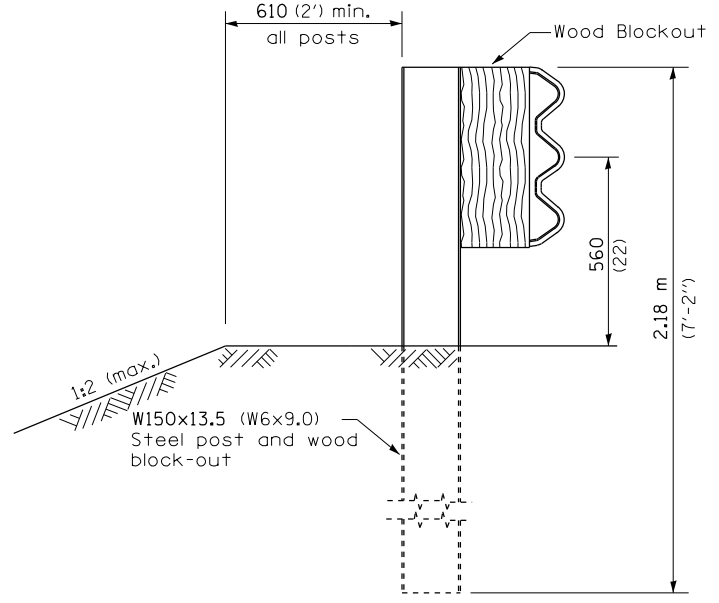
\* With standard washers. After tightening, cut the anchor bolts flush with nuts, and damage the nut to prevent it from loosening.

Note: See wood block details A, B, C. & D

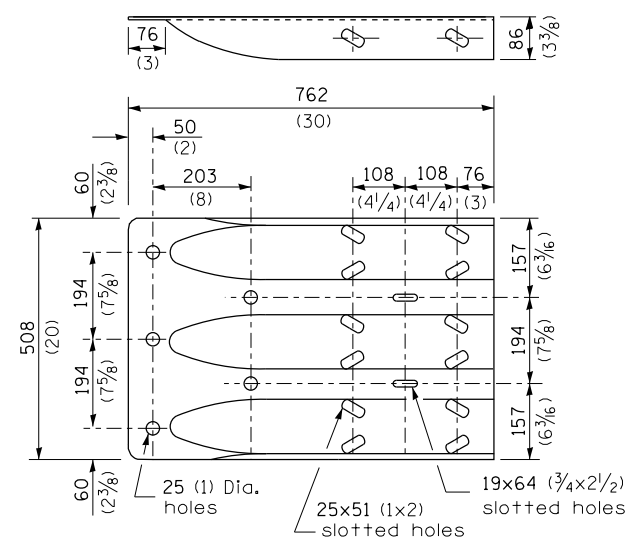
PLAN



ELEVATION



SECTION A-A



THRIE BEAM END SHOE DETAIL

GENERAL NOTES

See Standard 630001 for details of guardrail not shown.

Thrie beam rail shall be bolted to block-out at all posts.

All slope ratios are expressed as units of vertical displacement to units of horizontal displacement (V:H).

All dimensions are in millimeters (inches) unless otherwise shown.

|   |  |  |  |                       |  |  |  |            |  |  |  |                     |  |   |  |  |  |  |  |                           |  |         |  |        |  |              |  |           |  |
|---|--|--|--|-----------------------|--|--|--|------------|--|--|--|---------------------|--|---|--|--|--|--|--|---------------------------|--|---------|--|--------|--|--------------|--|-----------|--|
| FILE NAME =   |  |  |  | USER NAME = corcoranm |  |  |  | DESIGNED - |  |  |  | REVISED -           |  |   |  | <p style="text-align: center;"><b>STATE OF ILLINOIS</b><br/><b>DEPARTMENT OF TRANSPORTATION</b></p> <p style="text-align: center;"><b>PRE-MGS EFFECTIVE 4-1-06</b><br/><b>TRAFFIC BARRIER TERMINAL, TYPE 6B</b><br/><b>STANDARD 631033-01</b></p> <p style="text-align: right;">Sheet 1 of 2</p> |  |  |  | F.A. RTE.                 |  | SECTION |  | COUNTY |  | TOTAL SHEETS |  | SHEET NO. |  |
| c:\pwork\work\pwork\corcoranm\d0329287\666c76-sht-details.dgn |  |  |  | DRAWN -               |  |  |  | REVISED -  |  |  |  | VAR.                |  | * |  |  |  |  |  | VAR.                      |  | 43      |  | 39     |  |              |  |           |  |
| PLOT SCALE = 100.0000' / 1"                                   |  |  |  | CHECKED -             |  |  |  | REVISED -  |  |  |  | CONTRACT NO. 66C76  |  |   |  |  |  |  |  |                           |  |         |  |        |  |              |  |           |  |
| PLOT DATE = 3/25/2013   |  |  |  | DATE -                |  |  |  | REVISED -  |  |  |  | FED. ROAD DIST. NO. |  |   |  |  |  |  |  | ILLINOIS FED. AID PROJECT |  |         |  |        |  |              |  |           |  |