

STATE OF ILLINOIS
DEPARTMENT OF TRANSPORTATION
DIVISION OF HIGHWAYS

PROPOSED
HIGHWAY PLANS

F.A.P. ROUTE 317 (US 24)
SECTION (23BR-4)I

APPROACH SLAB RAISING
FORD COUNTY

C-93-048-13

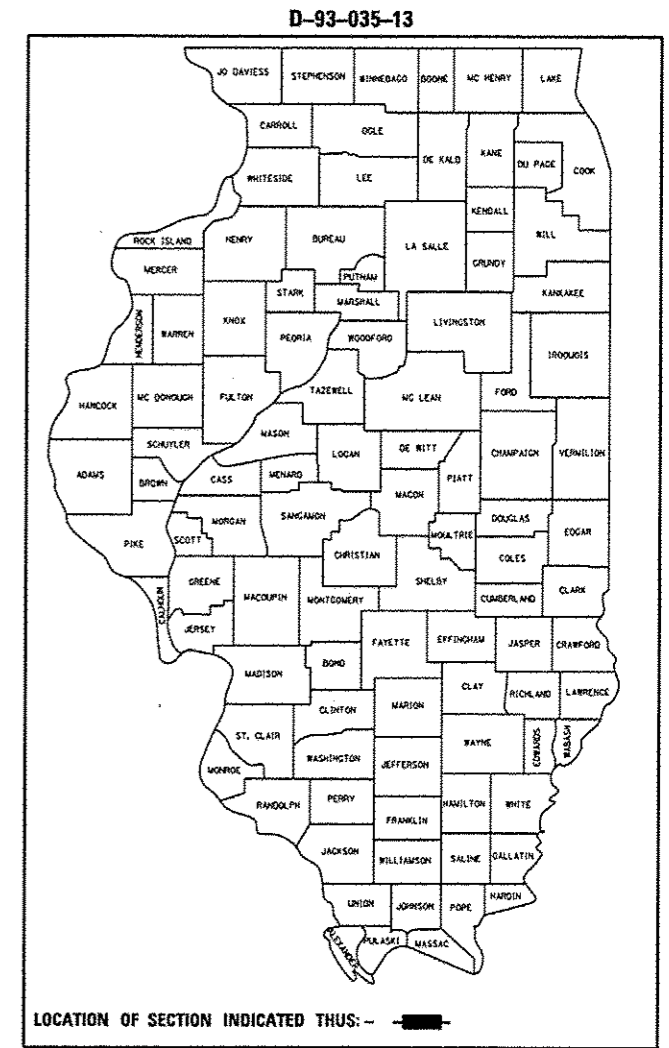
F.A.P. RTE.	SECTION	COUNTY	TOTAL SHEETS	SHEET NO.
317	(23BR-4)I	FORD	1	1
		ILLINOIS	CONTRACT NO. 66C78	

INDEX OF SHEETS

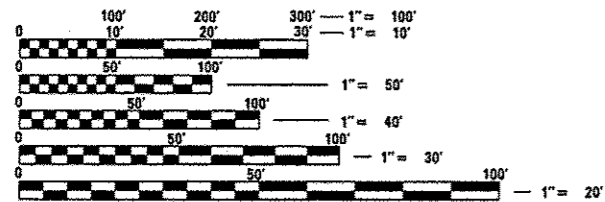
- COVER SHEET
- GENERAL NOTES
- SUMMARY OF QUANTITIES
- TYPICAL SECTION
- GENERAL PLAN AND ELEVATION FOR STRUCTURE NO. 027-0081
- EXISTING APPROACH SLAB DETAILS FOR STRUCTURE NO. 027-0081

HIGHWAY STANDARDS

000001-06	STANDARD SYMBOLS, ABBREVIATIONS AND PATTERNS
001006	DECIMAL OF AN INCH AND OF A FOOT
701001-02	OFF-ROAD OPERATIONS 2L, 2W, MORE THAN 15' (4.5 m) AWAY
701006-04	OFF-ROAD OPERATIONS 2L, 2W, 15' (4.5 m) TO 24" (600 mm) FROM PAVEMENT EDGE
701201-04	LANE CLOSURE, 2L, 2W, DAY ONLY, FOR SPEEDS ≥ 45 MPH
701301-04	LANE CLOSURE, 2L, 2W, SHORT TIME OPERATIONS
701901-02	TRAFFIC CONTROL DEVICES



PROJECT LOCATION
STRUCTURE NO. 027-0081
STA. 1198 + 12.00
1.08 MILES EAST OF IL 115 (PIPER CITY)

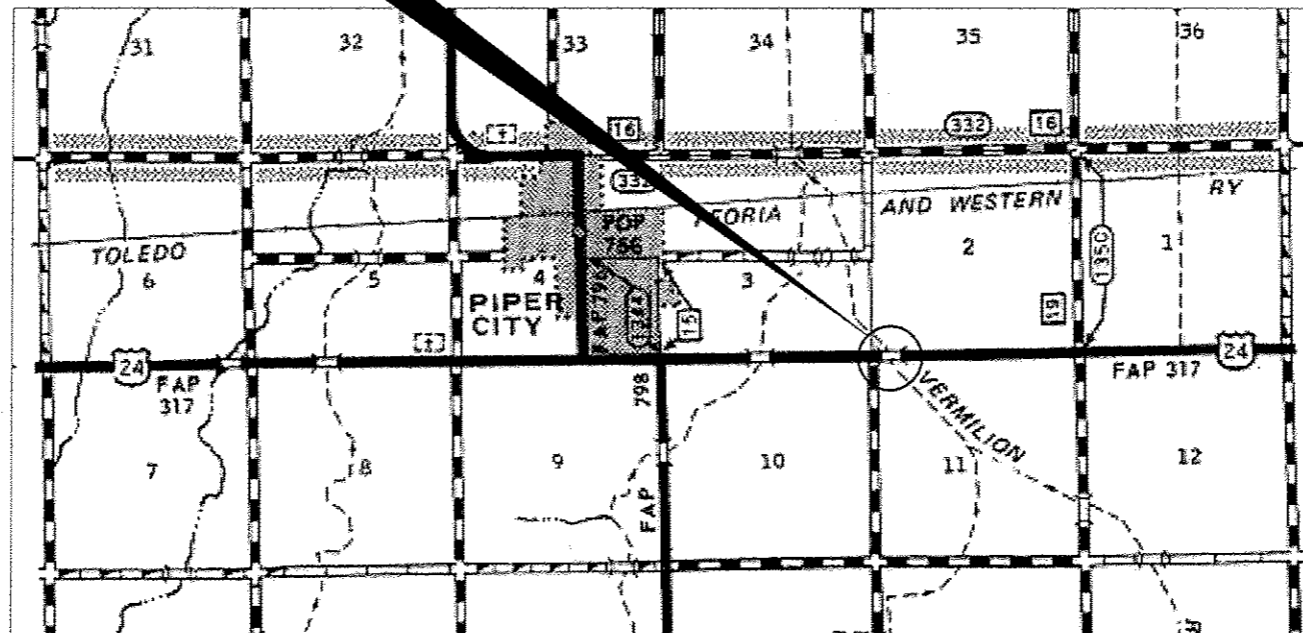


FULL SIZE PLANS HAVE BEEN PREPARED USING STANDARD ENGINEERING SCALES. REDUCED SIZED PLANS WILL NOT CONFORM TO STANDARD SCALES. IN MAKING MEASUREMENTS ON REDUCED PLANS, THE ABOVE SCALES MAY BE USED.

J.U.L.I.E.
JOINT UTILITY LOCATION INFORMATION FOR EXCAVATION
1-800-892-0123
OR 811

PROJECT ENGINEER: JOE KANNEL
UNIT CHIEF: RON WOODSHANK
TOWNSHIP: BRENTON

CONTRACT NO. 66C78



LOCATION MAP
NOT TO SCALE
POINT LOCATION

RURAL	
OTHER ARTERIAL	
F.A.P. 317 (US 24)	
2011	
ADT	2800
P.V.	72.32%
S.U.	11.61%
M.U.	16.07%

STATE OF ILLINOIS
DEPARTMENT OF TRANSPORTATION
DIVISION OF HIGHWAYS

SUBMITTED *4-3-13*
Paul A. Carter
DEPUTY DIRECTOR OF HIGHWAYS, REGION ENGINEER

May 10 2013
John D. Brammoli, P.E.
ENGINEER OF DESIGN AND ENVIRONMENT

May 10 2013
Omer OSMAN, P.E.
DIRECTOR OF HIGHWAYS, CHIEF ENGINEER

PRINTED BY THE AUTHORITY
OF THE STATE OF ILLINOIS