

INDEX OF SHEETS

1. COVER SHEET
2. GENERAL NOTES
3. SUMMARY OF QUANTITIES
4. TYPICAL SECTIONS
5. STAGE I CONSTRUCTION DETAILS
6. STAGE II TRAFFIC CONTROL DETAILS
7. STAGE III TRAFFIC CONTROL DETAILS
8. STAGE IV CONSTRUCTION DETAILS
9. TYPICAL PAVEMENT MARKINGS
- 10 - 11. STRUCTURE PLANS.

STANDARDS

- | | |
|----------------------|-------------------------------------------------------------------------------|
| 000001-06 | STANDARD SYMBOLS, ABBREVIATIONS AND PATTERNS |
| 001001-02 | AREAS OF REINFORCEMENT BARS |
| 001006 | DECIMAL OF AN INCH AND OF A FOOT |
| 701101-03 | OFF-ROAD OPERATIONS MULTILANE, 15' (4.5 m) TO 24" (600 mm) FROM PAVEMENT EDGE |
| 701106-02 | OFF-ROAD OPERATIONS, MULTILANE, MORE THAN 15' (4.5 m) AWAY |
| 701204-04 | LANE CLOSURE, 2L, 2W, DAY ONLY, FOR SPEEDS > 45 MPH |
| 701301-04 | LANE CLOSURE, 2L, 2W, SHORT TIME OPERATIONS |
| 701311-03 | LANE CLOSURE, 2L, 2W, MOVING OPERATIONS - DAY ONLY |
| 701456-02 | PARTIAL EXIT RAMP CLOSURE FREEWAY/EXPRESSWAY |
| 701601-08 | URBAN LANE CLOSURE, MULTILANE, 2W WITH MOUNTABLE MEDIAN |
| 701801-05 | LANE CLOSURE, MULTILANE 1W OR 2W CROSSWALK OR SIDEWALK CLOSURE |
| 701901-02 | TRAFFIC CONTROL DEVICES |
| 704001-07 | TEMPORARY CONCRETE BARRIER |
| 782001 | PRISMATIC CURB REFLECTORS |

STATE OF ILLINOIS

DEPARTMENT OF TRANSPORTATION

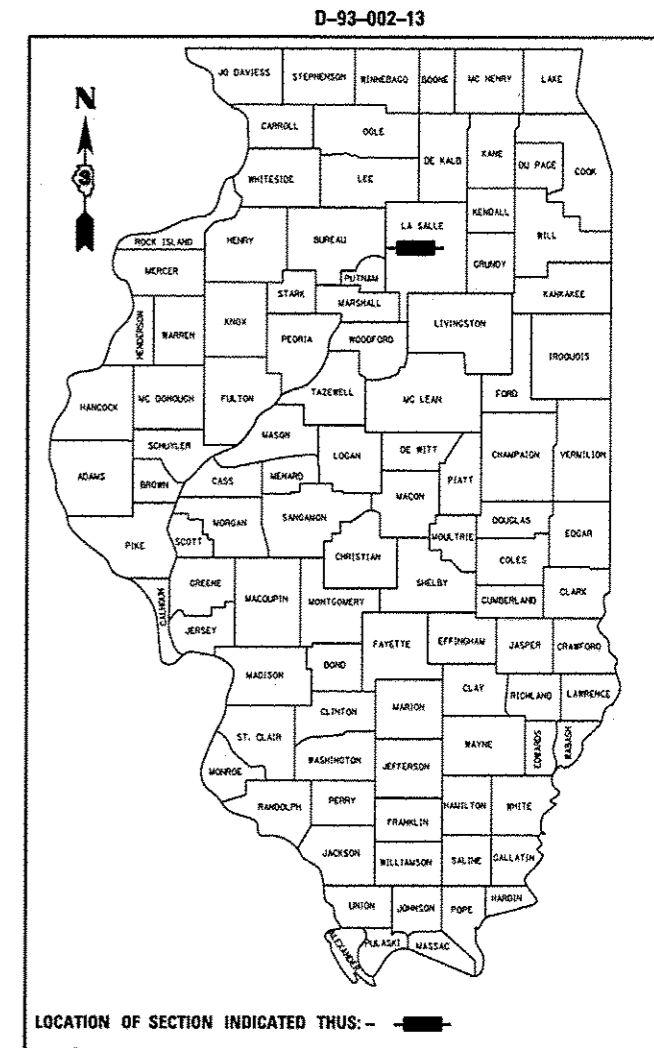
DIVISION OF HIGHWAYS

PROPOSED HIGHWAY PLANS

F.A.P. ROUTE 623 (US 6) SECTION (1HBR)I-2

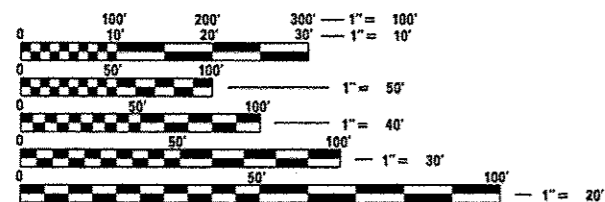
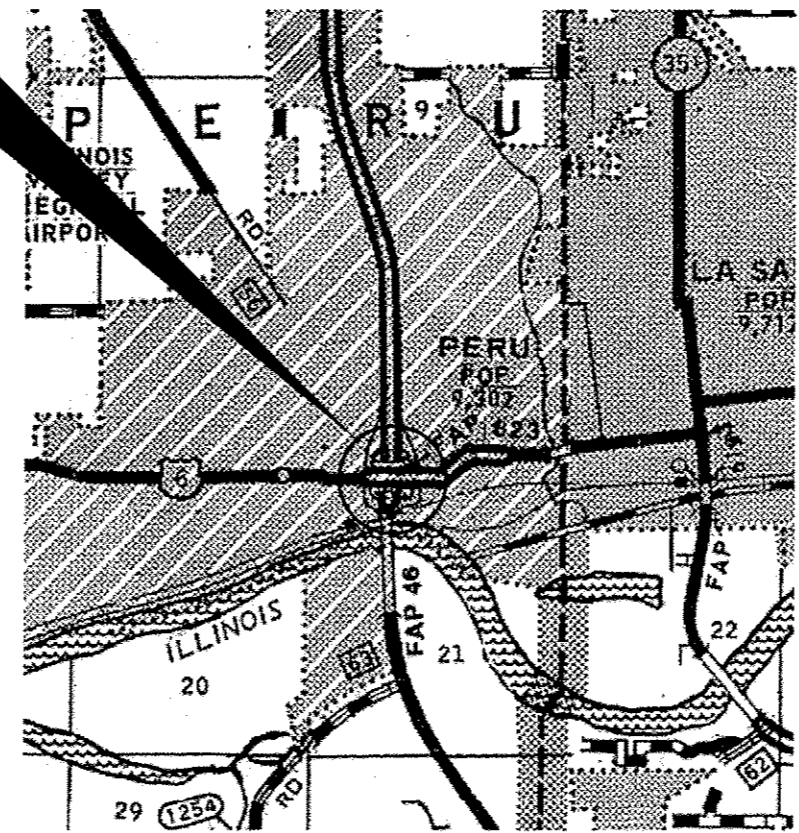
APPROACH SLAB REPAIR LASALLE COUNTY

C-93-050-13



PROJECT LOCATION

STRUCTURE NO. 050-0027
CARRYING FAP ROUTE 623 (US 6)
OVER IL ROUTE 251 IN PERU



FULL SIZE PLANS HAVE BEEN PREPARED USING STANDARD ENGINEERING SCALES. REDUCED SIZED PLANS WILL NOT CONFORM TO STANDARD SCALES. IN MAKING MEASUREMENTS ON REDUCED PLANS, THE ABOVE SCALES MAY BE USED.

J.U.L.I.E.
JOINT UTILITY LOCATION INFORMATION FOR EXCAVATION
1-800-892-0123
OR 811

PROJECT ENGINEER: JOE KANNEL, P.E.
UNIT CHIEF: RON WOODSHANK
TOWNSHIP: PERU
CONTRACT NO. 66C80

GROSS LENGTH = 148 FT. = 0.03 MILE
NET LENGTH = 38 FT. = 0.01 MILE

URBAN	
OPR	
FAP 623 (US 6)	
2012	
ADT	12800
P.V.	96.33%
S.U.	2.19%
M.U.	1.48%

STATE OF ILLINOIS
DEPARTMENT OF TRANSPORTATION
DIVISION OF HIGHWAYS

SUBMITTED 4-3-2013
Paul A. Cantor
DEPUTY DIRECTOR OF HIGHWAYS, REGION ENGINEER

May 10 2013
John D. Baranelli P.E.
ENGINEER OF DESIGN AND ENVIRONMENT

May 10 2013
Onur Osman P.E.
DIRECTOR OF HIGHWAYS, CHIEF ENGINEER

PRINTED BY THE AUTHORITY
OF THE STATE OF ILLINOIS

Rev. 6-3-13