

F.A.I. RTE.	SECTION	COUNTY	TOTAL SHEETS	SHEET NO.
39	150-4,5,6I	LASALLE	6	1
		ILLINOIS	CONTRACT NO. 66C83	

INDEX OF SHEETS

1. COVER SHEET
2. GENERAL NOTES
3. SUMMARY OF QUANTITIES
4. TYPICAL SECTIONS
5. TRAFFIC CONTROL AND PROTECTION, STANDARD 701400 (SPECIAL)
6. MAINLINE SCHEDULE

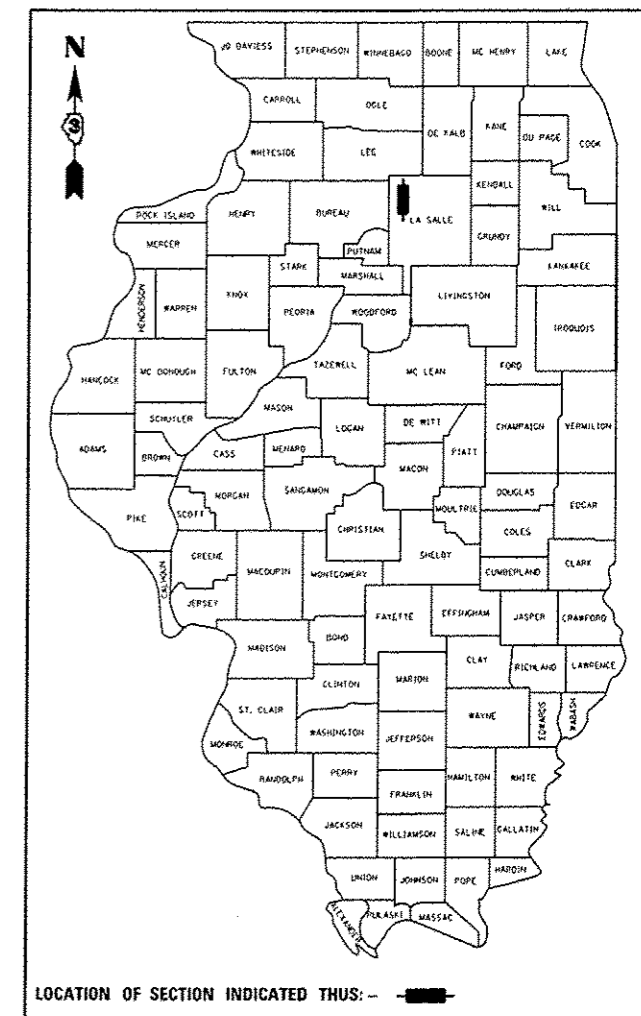
STANDARDS

- |           |   |
|-----------|---|
| 000001-06 | STANDARD SYMBOLS, ABBREVIATIONS AND PATTERNS                                  |
| 001006    | DECIMAL OF AN INCH AND OF A FOOT  |
| 642001-02 | SHOULDER RUMBLE STRIPS, 16 INCH   |
| 701101-03 | OFF-ROAD OPERATIONS MULTILANE, 15' (4.5 m) TO 24' (600 mm) FROM PAVEMENT EDGE |
| 701106-02 | OFF-ROAD OPERATIONS, MULTILANE, MORE THAN 15' (4.5 m) AWAY                    |
| 701400-06 | APPROACH TO LANE CLOSURE, FREEWAY/EXPRESSWAY                                  |
| 701401-07 | LANE CLOSURE, FREEWAY/EXPRESSWAY  |
| 701411-08 | LANE CLOSURE, MULTILANE, AT ENTRANCE OR EXIT RAMP FOR SPEEDS **e** 45 MPH     |
| 701901-02 | TRAFFIC CONTROL DEVICES   |

**STATE OF ILLINOIS**  
**DEPARTMENT OF TRANSPORTATION**  
**DIVISION OF HIGHWAYS**  
**PROPOSED**  
**HIGHWAY PLANS**

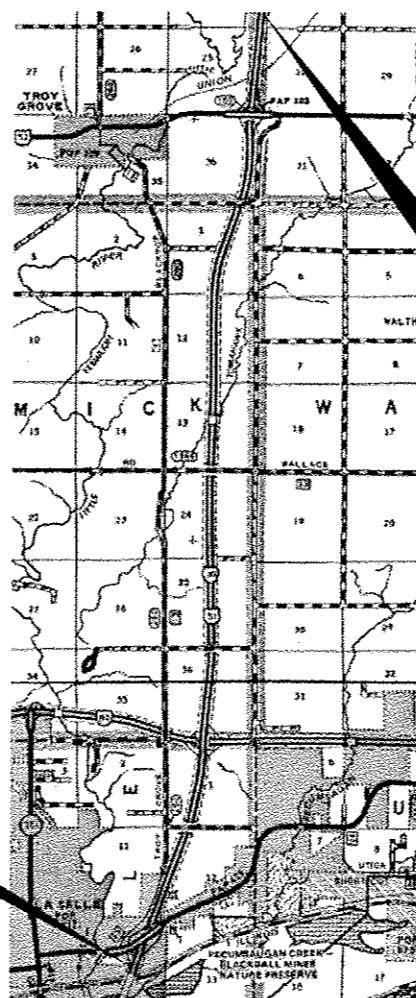
**F.A.I. ROUTE 39 (I-39)**  
**SECTION 50 (4,5,6)I**  
**PROJECT: HSIP-0039 (035)**  
**HOT-MIX ASPHALT SHOULDER REPAIR**  
**LASALLE COUNTY**

**D-93-045-13**



LOCATION OF SECTION INDICATED THUS: - [Red Box] -

**C-93-053-13**



**BEGIN PROJECT**

**1.0 MILES NORTH OF US 52**  
**AT STA. 1456 + 95.71**

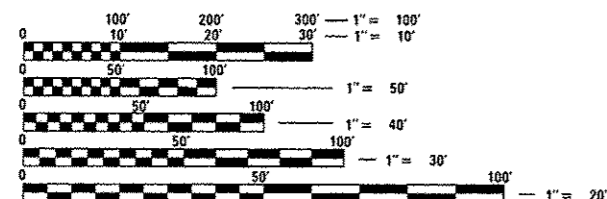
**BEGIN PROJECT**

**STA 888 + 50 SOUTH OF**  
**US 6 RAMPS**

GROSS LENGTH = 56845.71 FT. = 10.7 MILES

NET LENGTH = 56845.71 FT. = 10.7 MILES

LOCATION MAP  
 NOT TO SCALE



FULL SIZE PLANS HAVE BEEN PREPARED USING STANDARD ENGINEERING SCALES. REDUCED SIZED PLANS WILL NOT CONFORM TO STANDARD SCALES. IN MAKING MEASUREMENTS ON REDUCED PLANS, THE ABOVE SCALES MAY BE USED.

J.U.L.I.E.  
 JOINT UTILITY LOCATION INFORMATION FOR EXCAVATION  
 1-800-892-0123  
 OR 811

DISTRICT 3 NO. (815) 434-6131  
 PROJECT ENGINEER: JOE KANNEL, P.E.  
 UNIT CHIEF: SCOTT A. FERGUSON

CONTRACT NO. 66C83

**FUNCTIONAL CLASSIFICATION**  
**RURAL INTERSTATE**  
**2012 ADT = 18000**

**P.V. = 60.00% M.U. = 33.33% S.U. = 6.67%**

STATE OF ILLINOIS  
 DEPARTMENT OF TRANSPORTATION  
 DIVISION OF HIGHWAYS

SUBMITTED 3-29-13 Paul A. Loebson  
 DEPUTY DIRECTOR OF HIGHWAYS, REGION ENGINEER

May 10 2013  
John D. Baranzelli, P.E.  
 ENGINEER OF DESIGN AND ENVIRONMENT

May 10 2013  
Omair Osman, P.E.  
 DIRECTOR OF HIGHWAYS, CHIEF ENGINEER

**PRINTED BY THE AUTHORITY**  
**OF THE STATE OF ILLINOIS**