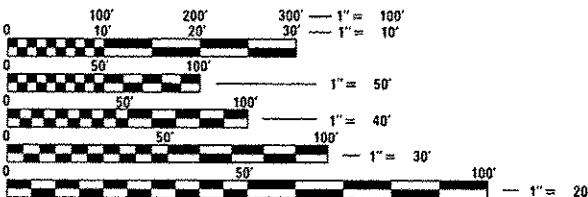


INDEX OF SHEETS

1. COVER SHEET
2. GENERAL NOTES
3. SUMMARY OF QUANTITIES
4. TYPICAL SECTIONS
5. TRAFFIC CONTROL AND PROTECTION,
STANDARD 701400 (SPECIAL)
6. MAINLINE SCHEDULE

STANDARDS

000001-06	STANDARD SYMBOLS, ABBREVIATIONS AND PATTERNS
001006	DECIMAL OF AN INCH AND OF A FOOT
642001-02	SHOULDER RUMBLE STRIPS, 16 INCH
701101-03	OFF-ROAD OPERATIONS MULTILANE, 15' (4.5 m) TO 24' (600 mm) FROM PAVEMENT EDGE
701106-02	OFF-ROAD OPERATIONS, MULTILANE, MORE THAN 15' (4.5 m) AWAY
701400-06	APPROACH TO LANE CLOSURE, FREEWAY/EXPRESSWAY
701401-07	LANE CLOSURE, FREEWAY/EXPRESSWAY
701411-08	LANE CLOSURE, MULTILANE, AT ENTRANCE OR EXIT RAMP FOR SPEEDS 45 MPH
701901-02	TRAFFIC CONTROL DEVICES



FULL SIZE PLANS HAVE BEEN PREPARED USING STANDARD
ENGINEERING SCALES. REDUCED SIZED PLANS WILL NOT
CONFORM TO STANDARD SCALES. IN MAKING MEASUREMENTS
ON REDUCED PLANS, THE ABOVE SCALES MAY BE USED.

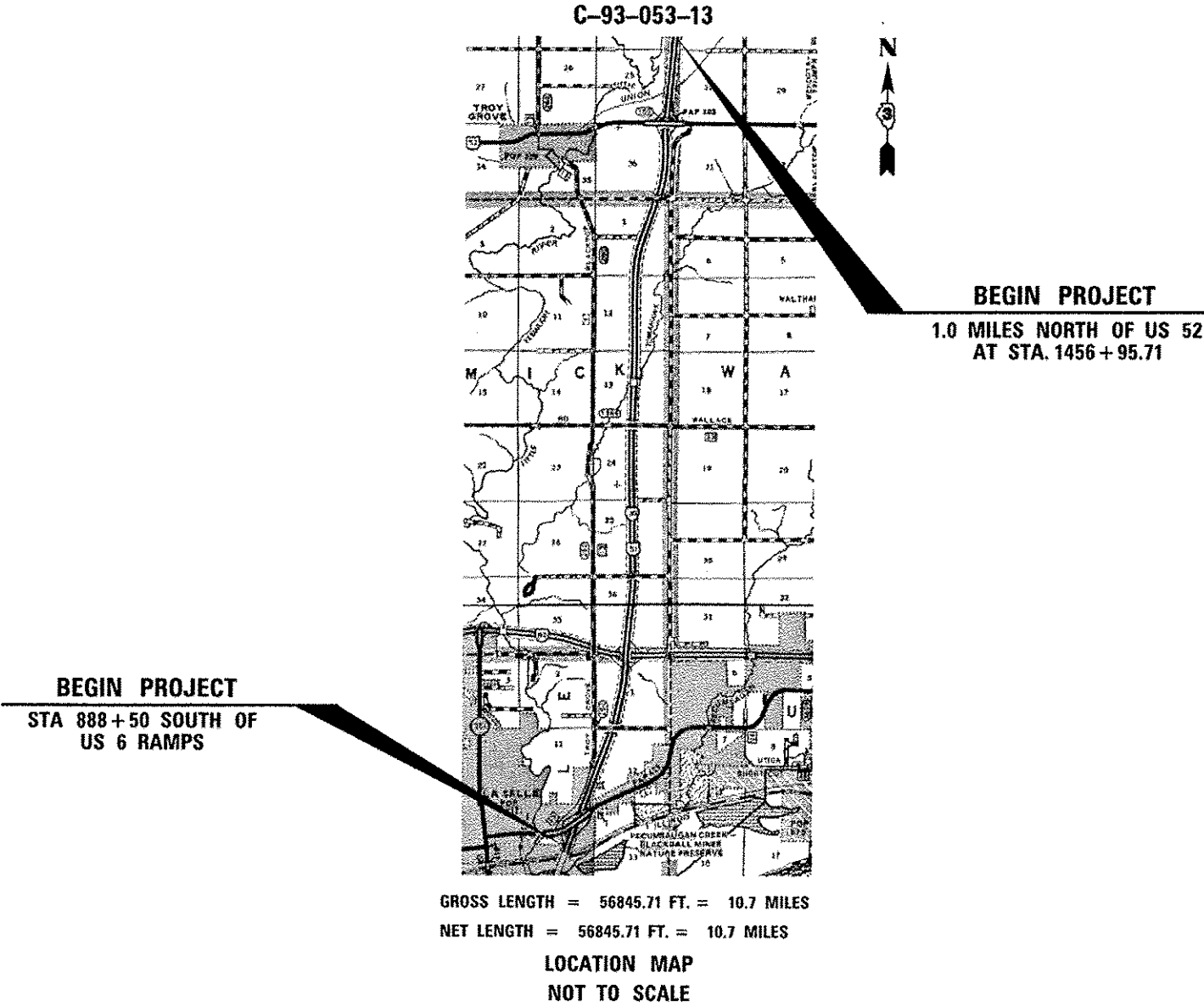
J.U.L.I.E.
JOINT UTILITY LOCATION INFORMATION FOR EXCAVATION
1-800-892-0123
OR 811

DISTRICT 3 NO. (815) 434-6131
PROJECT ENGINEER: JOE KANNEL, P.E.
UNIT CHIEF: SCOTT A. FERGUSON

CONTRACT NO. 66C83

STATE OF ILLINOIS
DEPARTMENT OF TRANSPORTATION
DIVISION OF HIGHWAYS
**PROPOSED
HIGHWAY PLANS**

F.A.I. ROUTE 39 (I-39)
SECTION 50 (4,5,6)I
PROJECT: *H5IP-0039 (035)*
HOT-MIX ASPHALT SHOULDER REPAIR
LASALLE COUNTY



GROSS LENGTH = 56845.71 FT. = 10.7 MILES
NET LENGTH = 56845.71 FT. = 10.7 MILES
LOCATION MAP
NOT TO SCALE

F.A.I. RTE.	SECTION	COUNTY	TOTAL SHEETS	SHEET NO.
39	150-4,5,6)I	LASALLE	6	1
ILLINOIS		CONTRACT NO. 66C83		



FUNCTIONAL CLASSIFICATION
RURAL INTERSTATE
2012 ADT = 18000
P.V. = 60.00% M.U. = 33.33% S.U. = 6.67%

STATE OF ILLINOIS
DEPARTMENT OF TRANSPORTATION
DIVISION OF HIGHWAYS
SUBMITTED *3-29-13* *Pat A. Loeb*
DEPUTY DIRECTOR OF HIGHWAYS, REGION ENGINEER
May 10 2013
John D. Baranowski, P.E.
ENGINEER OF DESIGN AND ENVIRONMENT
May 10 2013
Omer Osman, P.E.
DIRECTOR OF HIGHWAYS, CHIEF ENGINEER

PRINTED BY THE AUTHORITY
OF THE STATE OF ILLINOIS

GENERAL NOTES

PLAN DIMENSIONS RELATIVE TO THE EXISTING ROADWAY HAVE BEEN TAKEN FROM EXISTING PLANS AND ARE SUBJECT TO NOMINAL CONSTRUCTION VARIATIONS. IT SHALL BE THE CONTRACTOR'S RESPONSIBILITY TO MAKE NECESSARY ADJUSTMENTS PRIOR TO CONSTRUCTION OR ORDERING OF MATERIALS. SUCH VARIATIONS SHALL NOT BE CAUSE FOR ADDITIONAL COMPENSATION FOR A CHANGE IN THE SCOPE OF THE WORK. HOWEVER, THE CONTRACTOR WILL BE PAID FOR THE QUANTITY FURNISHED AT THE UNIT PRICE BID FOR THE WORK.

ANY REFERENCE TO A STANDARD IN THESE PLANS SHALL BE INTERPRETED TO MEAN THE EDITION AS INDICATED BY THE SUBNUMBER SHOWN IN THE LIST OF STANDARDS OR THE COPY INCLUDED IN THESE PLANS.

THE CONTRACTOR SHALL CONTACT JULIE AT LEAST 48 HOURS PRIOR TO EXCAVATION TO DETERMINE WHICH UTILITIES ARE IN THE AREA.

HMA RESURFACING	112	LBS / SQ YD / IN
-----------------	-----	------------------

BITUMINOUS MATERIALS (PRIME COAT) RATES	
TYPE OF SURFACE TO BE PRIMED	RESIDUAL ASPHALT RATE LB/SQ FT (KG/SQ M)
MILLED HMA, AGED NON-MILLED HMA, MILLED CONCRETE, NON-MILLED CONCRETE & TINED CONCRETE	0.05
FOG COAT BETWEEN HMA LIFTS, IL-4.75 & BRICK	0.025

COMMITMENTS

DISPOSAL OF EXCAVATED MATERIALS. ALL SUITABLE OR UNSUITABLE MATERIALS EXCAVATED DUE TO CONSTRUCTION OPERATIONS SHALL BE DISPOSED OF WITHIN THE LIMITS OF EXISTING RIGHT OF WAY. DISPOSAL OF EXCAVATED MATERIALS OFF THE RIGHT OF WAY SHALL NOT BE PERMITTED.

EXCAVATED MATERIALS SHALL BE DISPOSED OF AT LOCATIONS DIRECTED BY THE ENGINEER. ANY SUCH DISPOSAL SHALL NOT CREATE AND UNSIGHTLY OR OBJECTIONABLE APPEARANCE OR DETRACT FROM THE NATURAL TOPOGRAPHIC FEATURES WITHOUT WRITTEN PERMISSION FROM THE ENGINEER.

DATE: 3-29-13

PREPARED BY: Don Bonvil
DISTRICT STUDIES & PLANS ENGINEER

EXAMINED BY: Heidi Jones
DISTRICT CONSTRUCTION ENGINEER

Wynne Phillips
DISTRICT MATERIALS ENGINEER

Bruce A. Fischer
DISTRICT OPERATIONS ENGINEER

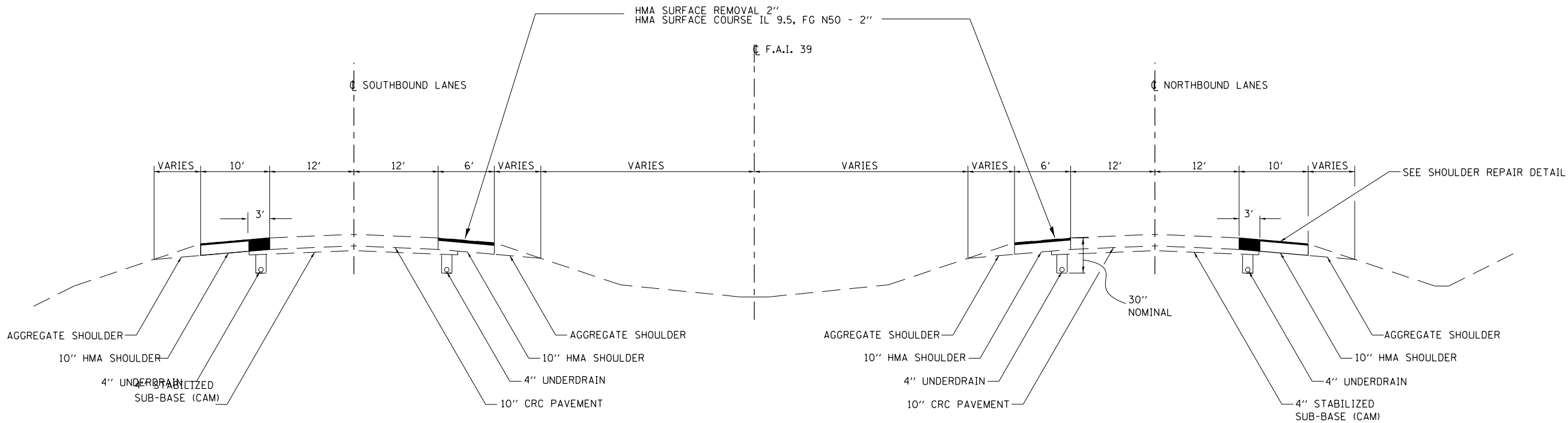
FILE NAME =	USER NAME = ferguson	DESIGNED = DBS	REVISED =	STATE OF ILLINOIS DEPARTMENT OF TRANSPORTATION	GENERAL NOTES	F.A.I. RTE.	SECTION	COUNTY	TOTAL SHEETS	SHEET NO.
c:\pwork\pudat\ferguson\0333082-0	66C83-ahc-details.dgn	DRAWN = DBS	REVISED =			39	150-4.5,611	LASALLE	6	2
	PLOT SCALE = 100.0000' / 1"	CHECKED =	REVISED =			CONTRACT NO. 66C83				
	PLOT DATE = 3/29/2013	DATE = FEBRUARY 2013	REVISED =			ILLINOIS FED. AID PROJECT				
SCALE:						SHEET 1	OF 1	SHEETS	STA. TO STA.	

00000000

CODE NO.	ITEM	UNIT	TOTAL	CONSTR. CODE	
				FED / STATE	
				90% / 10%	
				ROADWAY	ROADWAY
				0021	0021
				RURAL	URBAN
44000157	HOT-MIX ASPHALT SURFACE REMOVAL, 2"	SO YD	73862.9	59597.9	14265
44000158	HOT-MIX ASPHALT SURFACE REMOVAL, 2 1/4"	SO YD	85384.6	75787.6	9597
44000181	HOT-MIX ASPHALT SURFACE REMOVAL, 7 3/4"	SO YD	25615.4	22736.4	2879
44000189	HOT-MIX ASPHALT SURFACE REMOVAL, 10"	SO YD	13377.8	13377.8	
40603080	HOT-MIX ASPHALT BINDER COURSE, IL-19.0, FG, N50	TON	16923.2	15674.2	1249
64200116	SHOULDER RUMBLE STRIPS, 16 INCH	FOOT	238788.3	195994.3	42794
67100100	MOBILIZATION	L SUM	1	0.5	0.5
70100420	TRAFFIC CONTROL AND PROTECTION, STANDARD 701411	EACH	4		4
X4060110	BITUMINOUS MATERIALS (PRIME COAT), SPECIAL	POUND	8836.2	7462.2	1374
40603415	HOT-MIX ASPHALT SURFACE COURSE, IL-9.5, FG, N50	TON	20716.8	17909.8	2807
X7010805	TRAFFIC CONTROL AND PROTECTION, STANDARD 701401 (SPECIAL)	L SUM	1	0.5	0.5

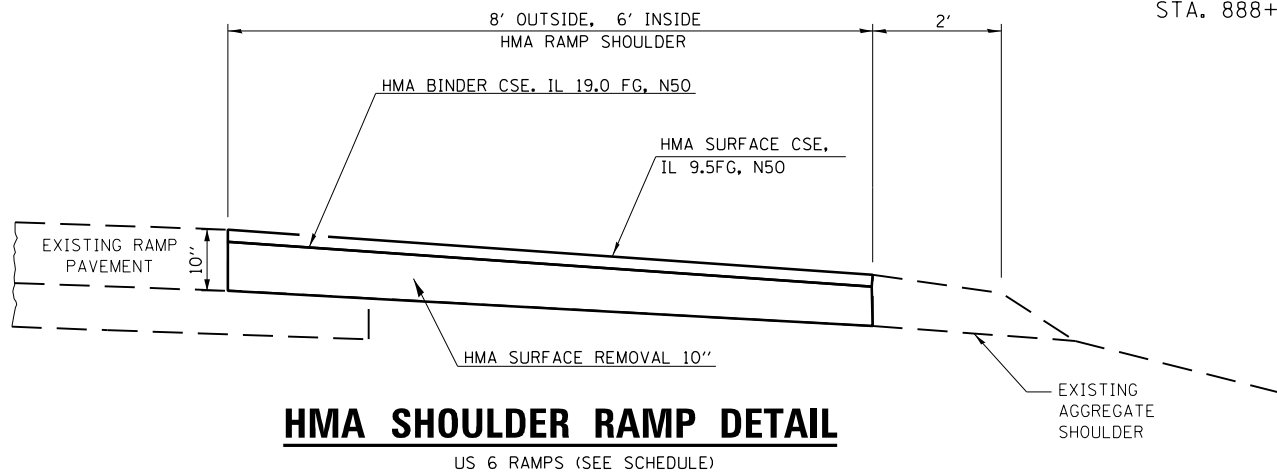
FILE NAME *	USER NAME * mcfaddenka	DESIGNED - DBS	REVISED -	STATE OF ILLINOIS DEPARTMENT OF TRANSPORTATION	SUMMARY OF QUANTITIES	SCALE:	SHEET 1 OF 1 SHEETS	STA. TO STA.	F.A.I. RTE.	SECTION	COUNTY	TOTAL SHEETS	SHEET NO.
c:\pwwork\pwwork\mcfaddenka\00333002\	366C83-sht-detailed.dgn	DRAWN - DBS	REVISED -						39	(50-4.5,61)	LASALLE	6	3
PLOT SCALE * 100.0000' / in.	CHECKED -	REVIS	ED -						CONTRACT NO. 66C83				
PLOT DATE * 4/9/2013	DATE - FEBRUARY 2013	REVISED -							ILLINOIS FED. AID PROJECT				

Rev.



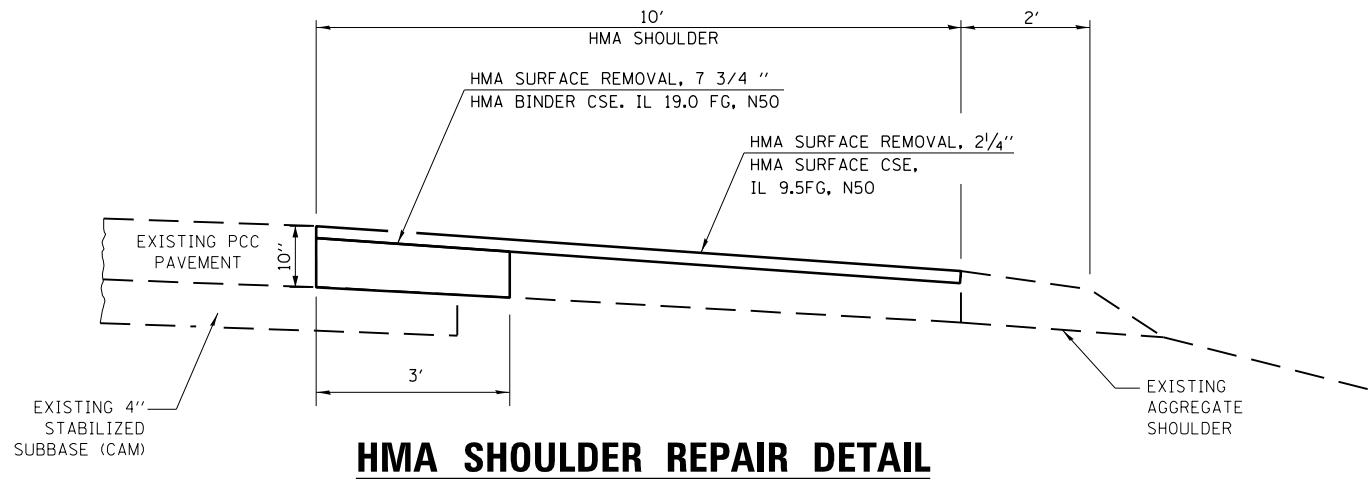
TYPICAL SECTION

STA. 888+50 TO STA. 1428+00



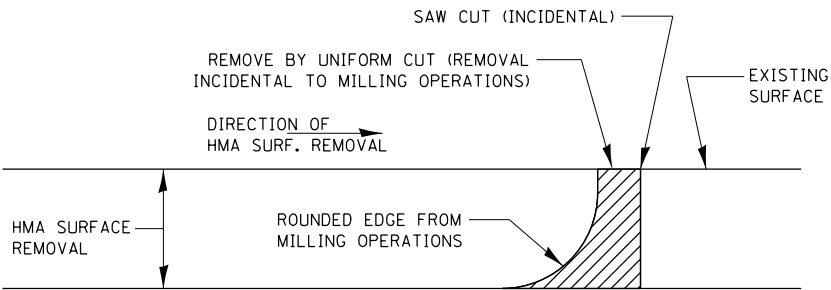
HMA SHOULDER RAMP DETAIL

US 6 RAMPS (SEE SCHEDULE)



HMA SHOULDER REPAIR DETAIL

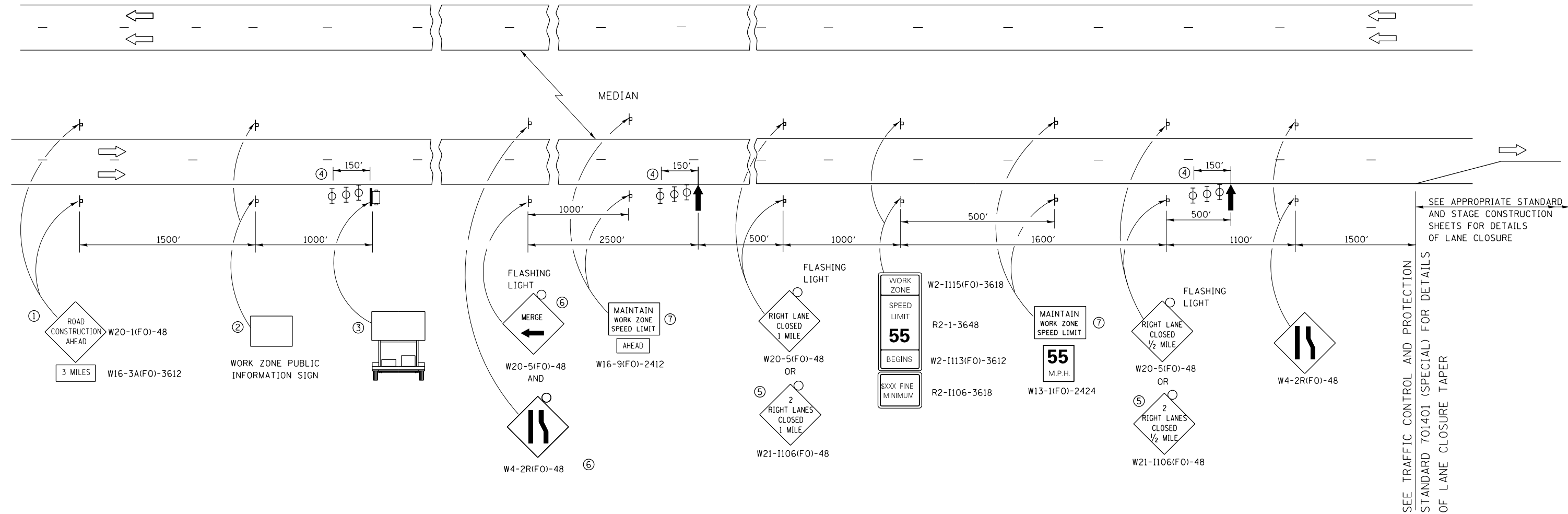
	HMA BINDER FOR SHOULDERS	HMA SURFACE FOR SHOULDERS
	BOTTOM LIFTS	TOP LIFTS
PG GRADE	SBS PG70-22	SBS PG70-22
DESIGN AIR VOIDS	4.0% @ N50	4.0% @ N50
MIXTURE COMPOSITION	IL 19.0 FG	IL 9.5 FG
FRICTION AGGREGATE		MIXTURE C
DENSITY CONTROL METHOD	CORES	CORES/ CORRELATION



NOTE:
WHEN MILLING OPERATIONS PRODUCE A ROUNDED EDGE, THEN A SAW CUT SHALL BE USED TO MANUFACTURE A PERPENDICULAR EDGE AS SHOWN IN THE DETAIL.THE ENGINEER SHALL BE THE SOLE JUDGE CONCERNING THE USE OF THIS DETAIL

HMA DETAIL AT BUTT JOINTS

FILE NAME = c:\pw_work\pwidot\ferguson\0333082\0366C83-sht-detail.dgn	USER NAME = ferguson		DESIGNED - DBS	REVISED - _____	STATE OF ILLINOIS DEPARTMENT OF TRANSPORTATION	TYPICAL SECTIONS			F.A.I. RTE.	SECTION	COUNTY	TOTAL SHEETS	SHEET NO.
	DRAWN - DBS		CHECKED - _____	REVISED - _____					39	(50-4,5,6)I	LASALLE	6	4
	PLOT SCALE = 100.0000' / 1in.		DATE - FEBRUARY 2013	REVISED - _____		SCALE: SHEET 1 OF 1 SHEETS STA. TO STA.			CONTRACT NO. 66C83				
	PLOT DATE = 3/29/2013								ILLINOIS FED. AID PROJECT				



- ① THE ROAD CONSTRUCTION AHEAD SIGN SHALL BE LOCATED 3 MILES IN ADVANCE OF THE PROJECT LIMITS.
- ② THE MESSAGE AND SIZE OF THE WORK ZONE PUBLIC INFORMATION SIGN SHALL BE AS SPECIFIED BY THE DEPARTMENT.
- ③ TO BE PLACED IN THE MEDIAN WHEN FEASIBLE. THE MESSAGE BOARD SHALL BE USED TO DISPLAY STATUS OF LANES WITHIN THE PROJECT. THE PRIMARY MESSAGES SHALL BE:
"RIGHT LANE CLOSED" / " x MILES AHEAD"
"LEFT LANE CLOSED" / " x MILES AHEAD"
"ALL LANES OPEN"
- ④ THREE, TYPE II BARRICADES, DRUMS, OR VERTICAL BARRICADES AT 50' CENTERS.
- ⑤ THIS SIGN SHALL BE USED WHEN 2 LANES ARE CLOSED.
- ⑥ WHEN THE LEFT LANE IS CLOSED, SWITCH THESE TWO SIGNS AND THE DIRECTION OF THE MERGE ARROW.

- ⑦ 48"x36" FLUORESCENT ORANGE SIGN WITH BLACK LETTERS.

36" 48" 8" 6" 6"

MAINTAIN
WORK ZONE
SPEED LIMIT

- ↑ ARROW BOARD
- PORTABLE CHANGEABLE MESSAGE SIGN
- SIGN
- TYPE II BARRICADE, DRUM, OR VERTICAL BARRICADE WITH MONODIRECTIONAL FLASHING LIGHT

GENERAL NOTE:

THIS STANDARD IS USED WHERE AT ANY TIME A LANE IS CLOSED ON A FREEWAY/EXPRESSWAY.

WHEN THE LEFT LANE IS CLOSED, LEFT LANE CLOSED SIGNS SHALL BE SUBSTITUTED FOR THE RIGHT LANE CLOSED SIGNS.

THE FIRST TWO SIGNS AND THE MESSAGE BOARD ARE STATIONARY. THE OTHER SIGNS AND ARROWBOARDS SHALL BE MOVED AS NECESSARY TO MAINTAIN THE REQUIRED DISTANCE FROM THE START OF THE LANE CLOSURE TAPER(S).

WHEN WORK OPERATIONS ARE NEAR MAJOR INTERCHANGES THE CONTRACTOR SHALL FURNISH ADDITIONAL MESSAGE BOARDS AND UTILIZED AT THE DIRECTION OF THE ENGINEER.

FILE NAME = c:\pw_work\p\wtdot\ferguson\0333082.D	USER NAME = ferguson	DESIGNED - RLW	REVISED -	STATE OF ILLINOIS DEPARTMENT OF TRANSPORTATION	TRAFFIC CONTROL AND PROTECTION, STANDARD 701400 (SPECIAL)		F.A.I. RTE.	SECTION	COUNTY	TOTAL SHEETS	SHEET NO.
	B66C83-sht-details.dgn	DRAWN - RLW	REVISED -				39	(50-4,5,6)I	LASALLE	6	5
	PLOT SCALE = 100.0000' / 1 in.	CHECKED -	REVISED -				CONTRACT NO. 66C83				
	PLOT DATE = 3/29/2013	DATE - FEBRUARY 2013	REVISED -				ILLINOIS FED. AID PROJECT				
					SCALE:	SHEET 1 OF 1 SHEETS	STA. TO STA.				

MAINLINE TABLE										
				HMA BINDER CSE. IL 19.0 FG N50	HMA SURF. CSE. IL 9.5 FG N50	HMA SURF. REM. 2 1/4"	HMA SURF. REM. 7 3/4"	SHLDR RUMBLE STRIPS 16"	BIT PRIME COAT	HMA SURF. REM. 2"
	I-39 NORTHBOUND	LENGTH	LENGTH	TON	TON	SQ YD	SQ YD	FOOT	LBS	SQ YD
START PROJECT	STA 888+50 TO STA 892+00	350	350	50.6	75.1	388.9	116.7	700	31.1	233.3
OMISSION DL SHLDR ONLY	STA 892+00 TO STA 900+00	800			59.7			1600		533.3
	STA 900+00 TO STA 920+00	2000	2000	289.3	429.3	2222.2	666.7	4000	177.8	1333.3
	STA 908+75 (RT 6 BRIDGE)									
OMISSION DL SHLDR ONLY	STA 920+00 TO STA 971+40	5140			383.8			10280		3426.7
	STA 971+40 TO STA 1000+50	2910	2910	421	624.7	3233.3	970	5820	258.7	1940
	STA 975+79.78 (29TH RD SN 050-0194)									
OMISSION DL SHLDR ONLY	STA 1000+50 TO STA 1006+50	600			44.8			1200		400
	STA 1006+50 TO STA 1024+00	1750	1750	253.2	375.7	1944.4	583.3	3500	155.6	1166.7
OMISSION DL SHLDR ONLY	STA 1024+00 TO STA 1033+25	925			69.1			1850		616.7
	STA 1028+55.04 (I-39 OVER I-80)									
	STA 1033+25 TO STA 1048+25	1500	1500	217	322	1666.7	500	3000	133.3	1000
OMISSION DL SHLDR ONLY	STA 1048+25 TO STA 1059+26	1101			82.2			2202		734
	STA 1059+26 TO STA 1084+25	2499	2499	361.5	536.5	2776.7	833	4998	222.1	1666
	STA 1083+08.38 (N 31ST RD OVERHEAD)									
OMISSION DL SHLDR ONLY	STA 1084+25 TO STA 1187+71	10346			772.5			20692		6897.3
	STA 1187+71 TO STA 1211+07.09	2336.09	2336.09	338	501.5	2595.7	778.7	4672.18	207.7	1557.4
	STA 1188+91.23 (CH 33 SN 050-0175)									
OMISSION DL AND PL SHLDR	STA 1211+07.09 TO STA 1221+80.73	1073.64								
	STA 1216+30.15 OVER TOMAHAWK CREEK 0174									
	STA 1221+80.73 TO STA 1418+00	19619.27	19619.27	2838.3	4211.6	21799.2	6539.8	39238.54	1743.9	13079.5
OMISSION DL SHLDR ONLY	STA 1418+00 TO STA 1443+99	2599			194.1			5198	231	1732.7
	STA 1404+80.5 US 52 INTERCHANGE									
	STA 1429+12.74 OVER C & N W RR SN 050-0167 & 0168									
END PROJECT STA 1456+95.71	STA 1443+99 TO STA 1456+95.71	1296.71	1296.71	187.6	278.3	1440.8	432.2	2593.42	115.3	864.5
NORTHBOUND TOTAL		56845.71	34261.07	4956.5	8960.9	38067.9	11420.4	111544.14	3276.5	37181.4
	I-39 SOUTHBOUND	LENGTH	LENGTH							
START PROJECT	STA 896+00 TO STA 918+40	2240	2240	324.1	480.9	2488.9	746.7	4480	199.1	1493.3
	STA 908+75 (RT 6 BRIDGE)									
OMISSION DL SHLDR ONLY	STA 918+40 TO STA 986+60	6820			509.2			13640	606.2	4546.7
	STA 986+60 TO STA 997+97	1137	1137	164.5	244.1	1263.3	379	2274	101.1	758
	STA 975+79.78 (29TH RD SN 050-0194)									
OMISSION DL SHLDR ONLY	STA 997+97 TO STA 1008+80	1083			80.9			2166	96.3	722
	STA 1008+80 TO STA 1024+65	1585	1585	229.3	340.2	1761.1	528.3	3170	140.9	1056.7
OMISSION DL SHLDR ONLY	STA 1024+65 TO STA 1032+71	806			60.2			1612	71.6	537.3
	STA 1028+55.04 (I-39 OVER I-80)									
	STA 1032+71 TO STA 1047+96	1525	1525	220.6	327.4	1694.4	508.3	3050	135.6	1016.7
OMISSION DL SHLDR ONLY	STA 1047+96 TO STA 1059+25	1129			84.3			2258	100.4	752.7
	STA 1059+25 TO STA 1211+07.09	15182.09	15182.09	2196.3	3259.1	16869	5060.7	30364.18	1349.5	10121.4
	STA 1083+08.38 (N 31ST RD OVERHEAD)									
	STA 1188+91.23 (CH 33 SN 050-0175)									
OMISSION DL AND PL SHLDR	STA 1211+07.09 TO STA 1221+80.73	1073.64								
	STA 1216+30.15 OVER TOMAHAWK CREEK 0174									
	STA 1221+80.73 TO STA 1418+00	19619.27	19619.27	2838.3	4211.6	21799.2	6539.8	39238.54	1743.9	13079.5
	STA 1351+66.73 (N 36TH RD SN 050-0172)									
OMISSION DL SHLDR ONLY	STA 1418+00 TO STA 1443+99	2599			194.1			5198	231	1732.7
	STA 1404+80.5 US 52 INTERCHANGE									
	STA 1429+12.74 OVER C & N W RR SN 050-0167 & 0168									
END PROJECT STA 1456+95.71	STA 1443+99 TO STA 1456+95.71	1296.71	1296.71	187.6	278.3	1440.8	432.2	2593.42	115.3	864.5
SOUTHBOUND TOTAL		56095.71	42585.07	6160.7	10070.3	47316.7	14195	110044.14	4890.9	36681.5
GRAND TOTAL		112941.4	76846.14	11117.2	19031.2	85384.6	25615.4	221588.3	8167.4	73862.9

RAMP SCHEDULE									
		INSIDE SHLDR	OUTSIDE SHLDR	AREA	HMA BINDER CSE. IL 19.0 FG N50	HMA SURF. CSE. IL 9.5 FG N50	HMA SURF. REM. 10"	SHLDR RUMBLE STRIPS 16"	BIT PRIME COAT
LOCATION	LENGTH	WIDTH	WIDTH		TON	TON	SQ YD	FOOT	LBS
US 6									
SW EXIT	1650	6	8	2566.7	1113.93	323.4	2566.7	3300	128.3
SE ENTRANCE	2600	6	8	4044.4	1755.29	509.6	4044.4	5200	202.2
NW ENTRANCE	2700	6	8	4200	1822.8	529.2	4200	5400	210
NE EXIT	1650	6	8	2566.7	1113.93	323.4	2566.7	3300	128.3
TOTAL	8600				5805.95	1685.6	13377.8	17200	668.8

FILE NAME = c:\pw_work\pww\dot\fergusonsa\d0333082.D	USER NAME = fergusonsa	DESIGNED - DBS	REVISED - _____	STATE OF ILLINOIS DEPARTMENT OF TRANSPORTATION	MAINLINE SCHEDULE			F.A.I. RTE.	SECTION	COUNTY	TOTAL SHEETS	SHEET NO.
	B66C83-sht-details.dgn	DRAWN - DBS	REVISED - _____					39	(50-4,5,6)I	LASALLE	6	6
	PLOT SCALE = 100.0000' / in.	CHECKED - _____	REVISED - _____		SCALE:			SHEET 1 OF 1 SHEETS			CONTRACT NO. 66C83	
	PLOT DATE = 3/29/2013	DATE - FEBRUARY 2013	REVISED - _____		STA. TO STA.			ILLINOIS FED. AID PROJECT				