

F.A.I. R.T.E.	SECTION	COUNTY	TOTAL SHEETS	SHEET NO.
57	D3 PATCHING 2014-4	IROQUOIS	19	1
		ILLINOIS	CONTRACT NO. 66C92	

INDEX OF SHEETS

1. COVER SHEET
2. GENERAL NOTES
3. SUMMARY OF QUANTITIES
4. TYPICAL SECTIONS
- 5 - 7. SCHEDULES - NORTHBOUND LANES
- 8 - 11. SCHEDULES - SOUTHBOUND LANES
12. TRAFFIC CONTROL AND PROTECTION, STANDARD 701400 (SPECIAL)
- 13 - 15. CLASS A PATCHES
- 16 - 18. CLASS B PATCHES
19. TYPICAL PAVEMENT MARKINGS

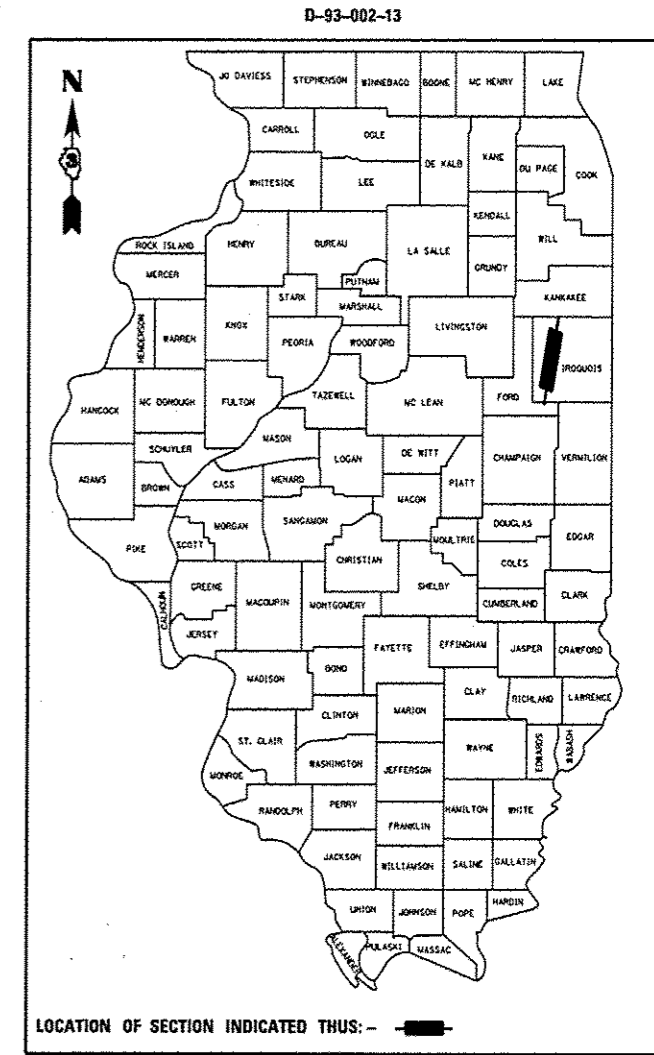
HIGHWAY STANDARDS

- | | |
|-----------|---|
| 000001-06 | STANDARD SYMBOLS, ABBREVIATIONS AND PATTERNS |
| 001001-02 | AREAS OF REINFORCEMENT BARS |
| 001006 | DECIMAL OF AN INCH AND OF A FOOT |
| 420701-02 | PAVEMENT FABRIC |
| 421001-02 | BAR REINFORCEMENT FOR CRC PAVEMENT |
| 701101-03 | OFF-ROAD OPERATIONS MULTILANE, 15' (4.5 m) TO 24" (600 mm) FROM PAVEMENT EDGE |
| 701401-07 | LANE CLOSURE, FREEWAY/EXPRESSWAY |
| 701411-08 | LANE CLOSURE, MULTILANE, AT ENTRANCE OR EXIT RAMP FOR SPEEDS ≥ 45 MPH |
| 701426-05 | LANE CLOSURE, MULTILANE INTERMITTENT OR MOVING OPERATION, FOR SPEEDS ≥ 45 MPH |
| 701456-02 | PARTIAL EXIT RAMP CLOSURE FREEWAY/EXPRESSWAY |
| 701901-02 | TRAFFIC CONTROL DEVICES |

STATE OF ILLINOIS
DEPARTMENT OF TRANSPORTATION
DIVISION OF HIGHWAYS
PROPOSED
HIGHWAY PLANS

FAI ROUTE 57 (I-57)
SECTION D3 PATCHING 2014-4

PAVEMENT PATCHING
IROQUOIS
C-93-088-13



END PROJECT
KANKAKEE COUNTY LINE
(M.P. 301.96)

LOCATION OF SECTION INDICATED THUS: - -

RURAL	
INTERSTATE	
FAI 57 (I-57)	
2011	
ADT	17300
P.V.	65.23%
S.U.	3.99%
M.U.	30.78%

STATE OF ILLINOIS
DEPARTMENT OF TRANSPORTATION
DIVISION OF HIGHWAYS

SUBMITTED 4-3-2013

DEPUTY DIRECTOR OF HIGHWAYS, REGION ENGINEER

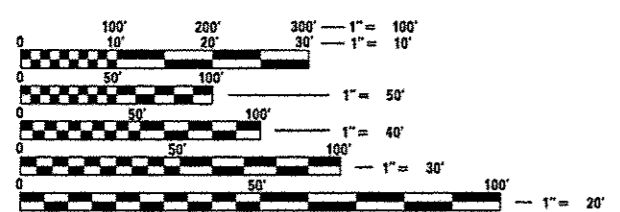
May 10 2013

ENGINEER OF DESIGN AND ENVIRONMENT

May 10 2013

DIRECTOR OF HIGHWAYS, CHIEF ENGINEER

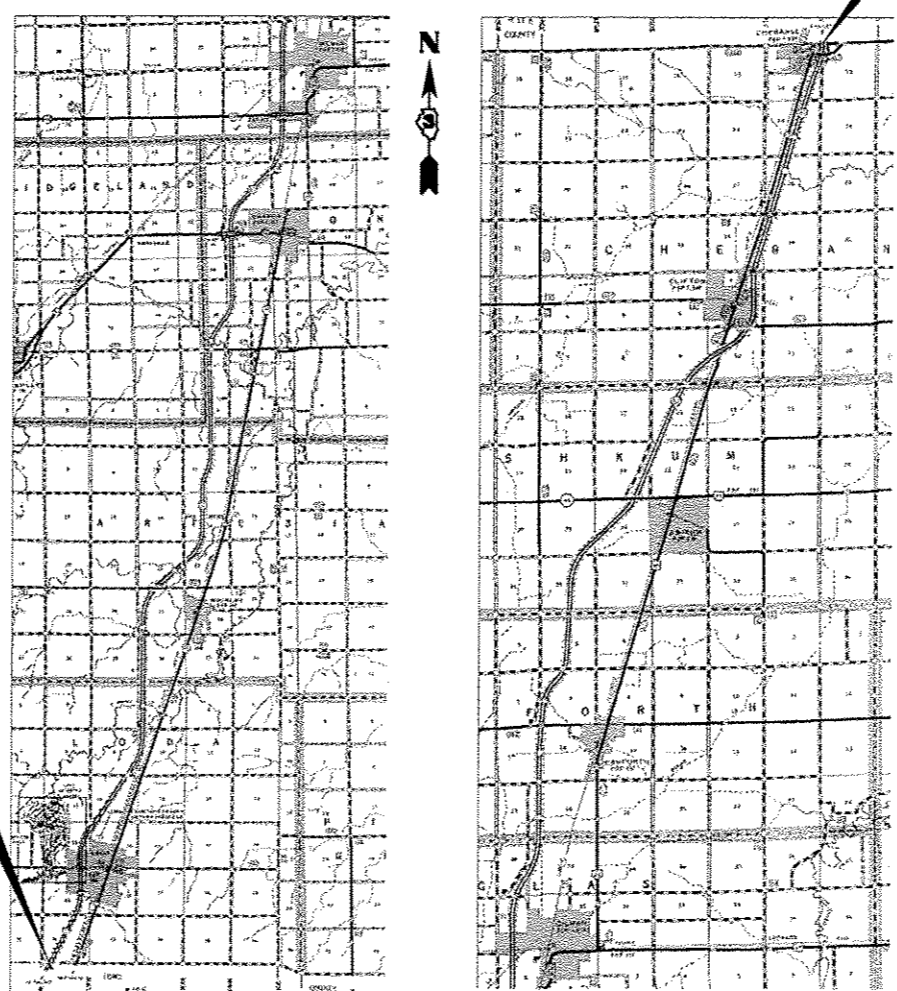
PRINTED BY THE AUTHORITY
OF THE STATE OF ILLINOIS



FULL SIZE PLANS HAVE BEEN PREPARED USING STANDARD ENGINEERING SCALES. REDUCED SIZED PLANS WILL NOT CONFORM TO STANDARD SCALES. IN MAKING MEASUREMENTS ON REDUCED PLANS, THE ABOVE SCALES MAY BE USED.

J.U.L.I.E.
JOINT UTILITY LOCATION INFORMATION FOR EXCAVATION
1-800-892-0123
OR 811

PROJECT ENGINEER: JOE KANNEL P.E.
UNIT CHIEF: RON WOODSHANK
TOWNSHIP: VARIOUS
CONTRACT NO. 66C92



BEGIN PROJECT
FORD COUNTY LINE
(M.P. 236.19)

GROSS LENGTH = 204706 FT. = 38.770 MILE
NET LENGTH = 1062 FT. = 0.201 MILE