

F.A.I. RTE.	SECTION	COUNTY	TOTAL SHEETS	SHEET NO.
57	D3 PATCHING 2014-5	FORD	16	1
		ILLINOIS	CONTRACT NO. 66C93	

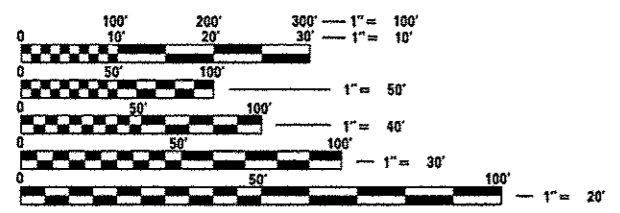
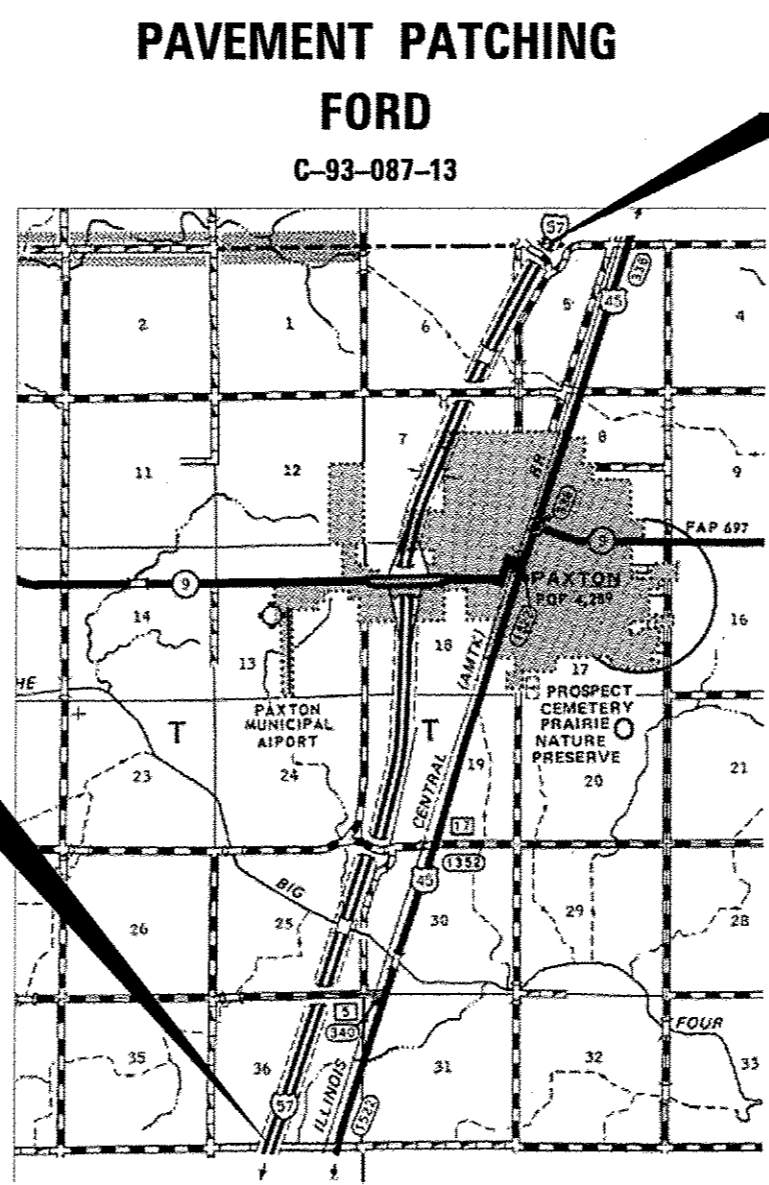
INDEX OF SHEETS 06-14-13 LETTING ITEM 157

STATE OF ILLINOIS
DEPARTMENT OF TRANSPORTATION
DIVISION OF HIGHWAYS
**PROPOSED
HIGHWAY PLANS**
FAI ROUTE 57 (I-57)
SECTION D3 PATCHING 2014-5

1. COVER SHEET
2. GENERAL NOTES
3. SUMMARY OF QUANTITIES
4. TYPICAL SECTIONS
- 5-8. SCHEDULES
- 9-10. TRAFFIC CONTROL AND PROTECTION, STANDARD 701400 (SPECIAL)
- 11-13. CLASS A PATCHES
- 14-16. CLASS B PATCHES
17. TYPICAL PAVEMENT MARKINGS

HIGHWAY STANDARDS

- 000001-06 STANDARD SYMBOLS, ABBREVIATIONS AND PATTERNS
- 001001-02 AREAS OF REINFORCEMENT BARS
- 001006 DECIMAL OF AN INCH AND OF A FOOT
- 420701-02 PAVEMENT FABRIC
- 421001-02 BAR REINFORCEMENT FOR CRC PAVEMENT
- 701101-03 OFF-ROAD OPERATIONS MULTILANE, 15' (4.5 m) TO 24" (600 mm) FROM PAVEMENT EDGE
- 701401-07 LANE CLOSURE, FREEWAY/EXPRESSWAY
- 701411-08 LANE CLOSURE, MULTILANE, AT ENTRANCE OR EXIT RAMP FOR SPEEDS ≥ 45 MPH
- 701426-05 LANE CLOSURE, MULTILANE INTERMITTENT OR MOVING OPERATION, FOR SPEEDS ≥ 45 MPH
- 701456-02 PARTIAL EXIT RAMP CLOSURE FREEWAY/EXPRESSWAY
- 701901-02 TRAFFIC CONTROL DEVICES



FULL SIZE PLANS HAVE BEEN PREPARED USING STANDARD ENGINEERING SCALES. REDUCED SIZED PLANS WILL NOT CONFORM TO STANDARD SCALES. IN MAKING MEASUREMENTS ON REDUCED PLANS, THE ABOVE SCALES MAY BE USED.

J.U.L.I.E.
JOINT UTILITY LOCATION INFORMATION FOR EXCAVATION
1-800-892-0123
OR 811

PROJECT ENGINEER: JOE KANNEL P.E.
UNIT CHIEF: RON WOODSHANK
TOWNSHIP: PATTON
CONTRACT NO. 66C93

GROSS LENGTH = 31944 FT. = 6.05 MILE
NET LENGTH = 466 FT. = 0.088 MILE

STATE OF ILLINOIS
DEPARTMENT OF TRANSPORTATION
DIVISION OF HIGHWAYS

SUBMITTED: *4-3-2013*
Paul A. Tabor
DEPUTY DIRECTOR OF HIGHWAYS, REGION ENGINEER

May 10 2013
John D. Baranelli P.E.
ENGINEER OF DESIGN AND ENVIRONMENT

May 10 2013
Omair Osman P.E.
DIRECTOR OF HIGHWAYS, CHIEF ENGINEER

PRINTED BY THE AUTHORITY
OF THE STATE OF ILLINOIS

GENERAL NOTES

PLAN DIMENSIONS AND DETAILS RELATIVE TO EXISTING PLANS ARE SUBJECT TO NOMINAL CONSTRUCTION VARIATIONS. THE CONTRACTOR SHALL FIELD VERIFY EXISTING DIMENSIONS AND DETAILS AFFECTING NEW CONSTRUCTION AND MAKE NECESSARY APPROVED ADJUSTMENTS PRIOR TO CONSTRUCTION OR ORDERING OF MATERIALS. SUCH VARIATIONS SHALL NOT BE CAUSE FOR ADDITIONAL COMPENSATION FOR A CHANGE IN SCOPE OF WORK; HOWEVER, THE CONTRACTOR WILL BE PAID FOR THE QUANTITY ACTUALLY FURNISHED AT THE UNIT PRICE BID FOR THE WORK.

FOR STABILIZATION, ALL TYPE III BARRICADES SHALL REQUIRE A MINIMUM OF FOUR SAND BAGS PER BARRICADE.

ANY REFERENCE TO A STANDARD IN THESE PLANS SHALL BE INTERPRETED TO MEAN THE EDITION AS INDICATED BY THE SUBNUMBER SHOWN IN THE LIST OF STANDARDS OR THE COPY INCLUDED IN THESE PLANS.

THE CONTRACTOR SHALL CONTACT JULIE AT LEAST 48 HOURS PRIOR TO EXCAVATION TO DETERMINE WHICH UTILITIES ARE IN THE AREA.

COMMITMENTS

DISPOSAL OF EXCAVATED MATERIALS. ALL UNSUITABLE OR UNSTABLE MATERIALS, DEFINED AS SOILS, EMBANKMENTS, SUB-BASE GRANULAR MATERIALS, AND/OR AGGREGATE MATERIALS THAT ARE EXCAVATED DUE TO CONSTRUCTION OPERATIONS SHALL BE DISPOSED OF WITHIN THE LIMITS OF THE EXISTING RIGHT OF WAY. DISPOSAL OF EXCAVATED MATERIALS, AS DEFINED ABOVE, OFF THE EXISTING RIGHT OF WAY SHALL NOT BE PERMITTED.

EXCAVATED MATERIALS SHALL BE DISPOSED OF AT LOCATIONS DIRECTED BY THE ENGINEER. ANY SUCH DISPOSAL SHALL NOT CREATE AND UNSIGHTLY OR OBJECTIONABLE APPEARANCE OR DETRACT FROM THE NATURAL TOPOGRAPHIC FEATURES WITHOUT WRITTEN PERMISSION FROM THE ENGINEER.

DATE: 4-3-2013

PREPARED BY: Dem Browalean
DISTRICT STUDIES & PLANS ENGINEER

EXAMINED BY: Herbert [Signature]
DISTRICT CONSTRUCTION ENGINEER

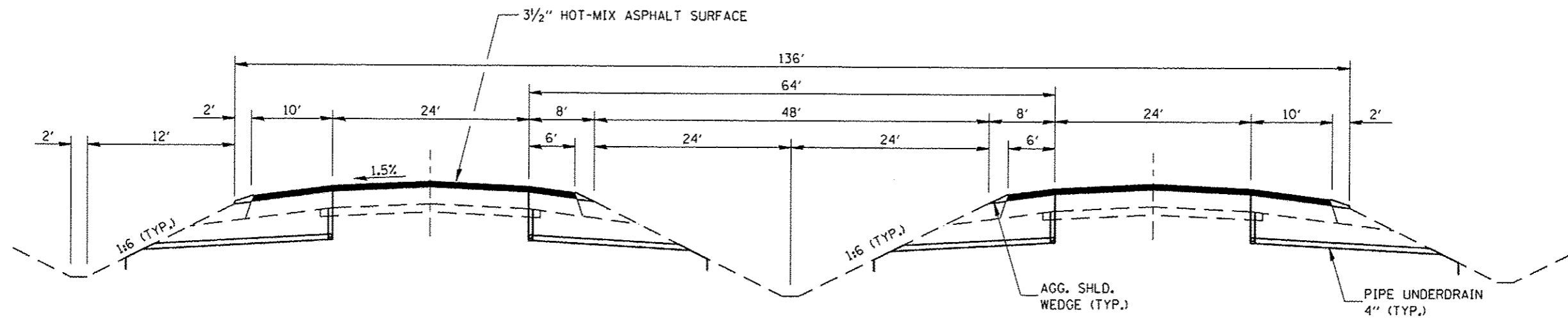
Wayne L Phillips [Signature]
DISTRICT MATERIALS ENGINEER

Bruce A. [Signature]
DISTRICT OPERATIONS ENGINEER

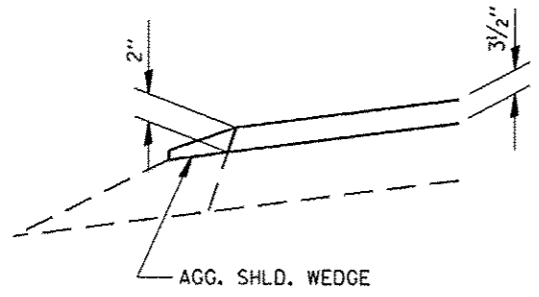
FILE NAME *	USER NAME * potelyj	DESIGNED - RW	REVISED -	STATE OF ILLINOIS DEPARTMENT OF TRANSPORTATION	GENERAL NOTES	F.A.I. RTE.	SECTION	COUNTY	TOTAL SHEETS	SHEET NO.
c:\pov\work\pwidot\potelyj\480336504\036504-93-shit-details.dgn	DRAWN - RW	REVISED -	57			D3 PATCHING 2014-5	FORD	16	2	
PLOT SCALE * 100.0000' / 1" =	CHECKED -	REVISED -	CONTRACT NO. 66C93							
PLOT DATE * 4/3/2013	DATE -	REVISED -	ILLINOIS FED. AID PROJECT							
				SCALE:	SHEET NO. 1 OF 1 SHEETS	STA.	TO STA.			

CODE NO.	ITEM	UNIT	CONSTR. CODE
			STATE
			100%
			ROADWAY
			0005
			RURAL
44200577	CLASS A PATCHES, TYPE II, 12 INCH	SQ YD	621
44200994	CLASS B PATCHES, TYPE II, 12 INCH	SQ YD	187
44201299	DOWEL BARS 1 1/2"	EACH	476
44213000	PATCH REINFORCEMENT	SQ YD	621
44213100	PAVEMENT FABRIC	SQ YD	621
44213200	SAW CUTS	FOOT	4388
67100100	MOBILIZATION	L SUM	1
70100420	TRAFFIC CONTROL AND PROTECTION, STANDARD 701411	EACH	4
70100825	TRAFFIC CONTROL AND PROTECTION, STANDARD 701456	L SUM	1
70103815	TRAFFIC CONTROL SURVEILLANCE	CAL DAY	20
* 78009004	MODIFIED URETHANE PAVEMENT MARKING LINE 4"	FOOT	2844
* 78009006	MODIFIED URETHANE PAVEMENT MARKING LINE 6"	FOOT	580
X0326880	MESSAGE BOARD VEHICLE DRIVER	HOUR	120
X0326907	PORTABLE, VEHICLE MOUNTED, CHANGEABLE MESSAGE SIGN	CAL MO	0.5
X7010805	TRAFFIC CONTROL AND PROTECTION, STANDARD 701401 (SPECIAL)	L SUM	1

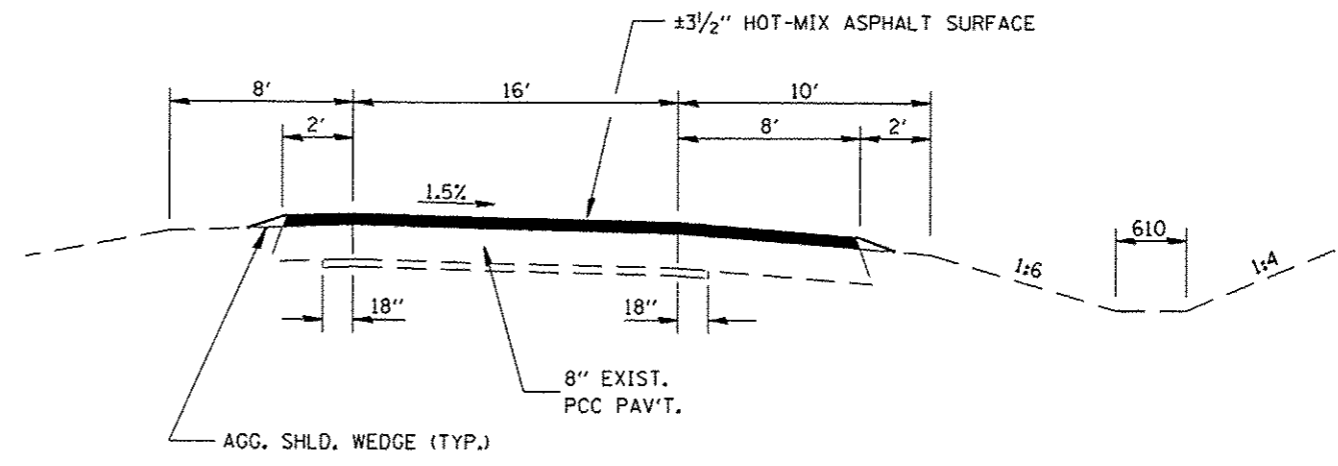
15 * SPECIALITY ITEMS



TYPICAL SECTION



OUTSIDE SHOULDERS



TYPICAL SECTION THRU RAMPS

FILE NAME =	USER NAME = potelyj	DESIGNED - RW	REVISED -
c:\pvc\work\pav\dot\potelyj\033598\0366	93-shr-details.dgn	DRAWN - RW	REVISED -
	PLOT SCALE = 1/80.0000' / in.	CHECKED -	REVISED -
	PLOT DATE = 4/23/2013	DATE -	REVISED -

STATE OF ILLINOIS
DEPARTMENT OF TRANSPORTATION

SCALE:		SHEET NO. 1 OF 1 SHEETS		STA.	TO STA.
--------	--	-------------------------	--	------	---------

F.A.J. RTE.	SECTION	COUNTY	TOTAL SHEETS	SHEET NO.
57	03 PATCHING 2014-5	FORD	16	4
CONTRACT NO. 66C93				
ILLINOIS FED. AID PROJECT				

CLASS A PATCHING SCHEDULE
NORTHBOUND LANES

LOCATION BY MILE POST	DRIVE LANE	PASS LANE	DRIVING LANE				PASSING LANE			
			TYPE II 12"	PATCH REINF.	PAV'T FABRIC	SAW CUTS	TYPE II	PATCH REINF.	PAV'T FABRIC	SAW CUTS
			SQ YD	SQ YD	SQ YD	FOOT	SQ YD	SQ YD	SQ YD	FOOT
257.50		10					13	13	13	68
257.51		6					8	8	8	60
257.52		6					8	8	8	60
257.53	6		8	8	8	60				
257.54	6		8	8	8	60				
257.59	6	6	8	8	8	60	8	8	8	60
257.60		6					8	8	8	60
257.64		6					8	8	8	60
257.68		6					8	8	8	60
257.69		6					8	8	8	60
257.72		10					13	13	13	68
257.74		10					13	13	13	68
257.75		6					8	8	8	60
257.80		10					13	13	13	68
257.92	6		8	8	8	60				
258.50	6		8	8	8	60				
257.52		10					13	13	13	68
259.18		6					8	8	8	60
261.34		8					11	11	11	64
261.35		6					8	8	8	60
262.25	6		8	8	8	60				
262.52		6					8	8	8	60
TOTALS	36	124	48	48	48	360	165	165	165	1064

CLASS B PATCHING SCHEDULE
NORTHBOUND LANES

LOCATION BY L.M.	RAMPS			
	TYPE II 12"	DOWEL BARS EACH	SAW CUTS FOOT	PAVE'T FABRIC SQ YD
	SQ YD			
EXIT RAMP: *261				
0.06	11	28	60	11
0.12	11	28	60	11
0.15	11	28	60	11
0.22	11	28	60	11
0.23	11	28	60	11
ENTRANCE RAMP: *261				
0.03	11	28	60	11
0.05	11	28	60	11
0.11	11	28	60	11
0.18	11	28	60	11
0.24	11	28	60	11
TOTALS	110	280	600	110

•ALL EXIT RAMPS: L.M. = 0.00 = BEGINNING OF GORE AREA
 ••ALL ENTRANCE RAMPS: L.M. = 0.00 = TOP OF RAMP CONST. JT.

PAVEMENT MARKING SCHEDULE
NORTHBOUND LANES

LOCATION MILE POST	MODIFIED URETHANE PAVEMENT MARKING LINE 4"		MODIFIED URETHANE PAVEMENT MARKING LINE 6"
	FEET		FEET
	YELLOW	WHITE	WHITE
257.50		10	10
257.51		6	10
257.52		6	10
257.53	6		10
257.54	6		10
257.59	6	6	10
257.60		6	10
257.64		6	10
257.68		6	10
257.69		6	10
257.72		10	10
257.74		10	10
257.75		6	10
257.80		10	10
257.92	6		10
258.50	6		10
257.52		10	10
259.18		6	10
261.34		8	10
261.35		6	10
262.25	6		10
262.52		6	10
SUBTOTALS	36	124	
TOTALS	160		220

PAVEMENT MARKING SCHEDULE
NORTHBOUND LANES RAMPS

LOCATION L.M.	MODIFIED URETHANE PAVEMENT MARKING LINE 4"		MODIFIED URETHANE PAVEMENT MARKING LINE 6"
	FEET		FEET
	YELLOW	WHITE	WHITE
EXIT RAMP: #261			
0.06	6	6	
0.12	6	6	
0.15	6	6	
0.22	6	6	
0.23	6	6	
ENTRANCE RAMP: #261			
0.03	6	6	
0.05	6	6	
0.11	6	6	
0.18	6	6	
0.24	6	6	
SUBTOTALS	42	42	
TOTALS	84		

- * EXIT RAMP LOG MILE 0.0 = BEGINNING OF GORE AREA.
- ** ENTRANCE RAMP LOG MILE 0.0 = TOP OF RAMP @ CONST. JOINT

**CLASS A PATCHING SCHEDULE
SOUTHBOUND LANES**

LOCATION BY MILE POST	DRIVING LANE				PASSING LANE			
	TYPE II 12"	PATCH REINF.	PAV'T FABRIC	SAW CUTS	TYPE II 12"	PATCH REINF.	PAV'T FABRIC	SAW CUTS
	SQ YD	SQ YD	SQ YD	FOOT	SQ YD	SQ YD	SQ YD	FOOT
264.48	8	8	8	60	8	8	8	60
264.46	8	8	8	60	8	8	8	60
264.45	8	8	8	60	8	8	8	60
264.40	8	8	8	60	8	8	8	60
264.31	8	8	8	60				
264.29	8	8	8	60	8	8	8	60
264.27	8	8	8	60	8	8	8	60
264.26	8	8	8	60				
264.22	8	8	8	60	8	8	8	60
264.21	8	8	8	60	8	8	8	60
264.20	8	8	8	60				
264.18	8	8	8	60				
264.16	8	8	8	60				
264.11	8	8	8	60				
264.00	8	8	8	60				
263.96					8	8	8	60
263.86					8	8	8	60
263.84					8	8	8	60
263.38	8	8	8	60	8	8	8	60
263.37	8	8	8	60	8	8	8	60
263.34	8	8	8	60	8	8	8	60
263.30	8	8	8	60				
263.29	8	8	8	60				
263.19	8	8	8	60				
263.10					8	8	8	60
263.04					8	8	8	60
263.02					8	8	8	60
262.80					11	11	11	64
262.77	8	8	8	60				
262.76	8	8	8	60				
262.68	8	8	8	60				
262.52	8	8	8	60				
262.19	13	13	13	68	13	13	13	68
259.22	8	8	8	60	8	8	8	60
258.40	8	8	8	60				
258.30					11	11	11	64
TOTALS	229	229	229	1688	179	179	179	1276

**CLASS B PATCHING SCHEDULE
SOUTHBOUND LANES**

LOCATION BY L.M.	RAMPS			
	TYPE II 12"	DOWEL BARS	SAW CUTS	PAVE'T FABRIC
	SQ YD	EACH	FOOT	SQ YD
EXIT RAMP #216				
0.02	11	28	60	11
0.06	11	28	60	11
0.14	11	28	60	11
2.00	11	28	60	11
ENTRANCE RAMP #216				
0.04	11	28	60	11
0.18	11	28	60	11
0.23	11	28	60	11
TOTALS	77	196	420	77

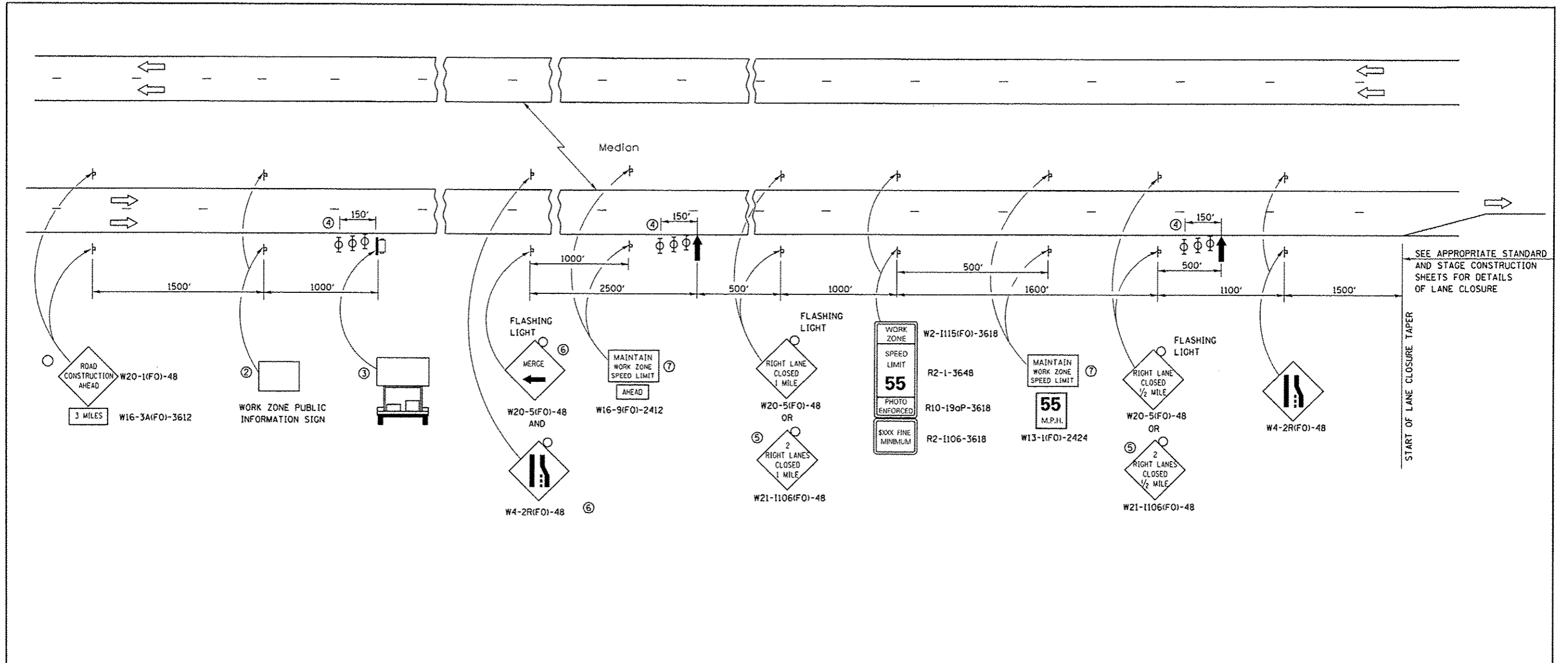
•ALL EXIT RAMPS: L.M. = 0.00 = BEGINNING OF GORE AREA
 ••ALL ENTRANCE RAMPS: L.M. = 0.00 = TOP OF RAMP CONST. JT.

SCHEDULE
PAVEMENT MARKING
SOUTHBOUND LANES

LOCATION MILE POST	MODIFIED URETHANE PAVEMENT MARKING LINE 4"		MODIFIED URETHANE PAVEMENT MARKING LINE 6"	REMARKS
	FEET		FEET	
	YELLOW	WHITE	WHITE	
264.48	6	6	10	
264.46	6	6	10	
264.45	6	6	10	
264.40	6	6	10	
264.31	6		10	
264.29	6	6	10	
264.27	6	6	10	
264.26	6		10	
264.22	6	6	10	
264.21	6	6	10	
264.20	6		10	
264.18	6		10	
264.16	6		10	
264.11	6		10	
264.00	6		10	
263.96		6	10	
263.86		6	10	
263.84		6	10	
263.38	6	6	10	
263.37	6	6	10	
263.34	6	6	10	
263.30	6		10	
263.29	6		10	
263.19	6		10	
263.10		6	10	
263.04		6	10	
263.02		6	10	
262.80		8	10	
262.77	6		10	
262.76	6		10	
262.68	6		10	
262.52	6		10	
262.19	10	10	10	
259.22	6	6	10	
258.40	6		10	
258.30		8	10	
PAGE TOTAL	172	134		
TOTALS	306		360	

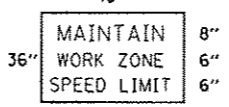
SCHEDULE
PAVEMENT MARKING
SOUTHBOUND RAMPS

LOCATION		MODIFIED URETHANE PAVEMENT MARKING LINE 4"		
		FEET		
EXIT NO.	L.M.	YELLOW	WHITE	
261	EXIT	0.02	6	6
		0.06	6	6
		0.14	6	6
		0.20	6	6
ENTRANCE	0.04	6	6	
	0.18	6	6	
	0.23	6	6	
PAGE TOTAL		120	120	
TOTALS		684		



- ① THE ROAD CONSTRUCTION AHEAD SIGN SHALL BE LOCATED 3 MILES IN ADVANCE OF THE PROJECT LIMITS.
- ② THE MESSAGE AND SIZE OF THE WORK ZONE PUBLIC INFORMATION SIGN SHALL BE AS SPECIFIED BY THE DEPARTMENT.
- ③ TO BE PLACED IN THE MEDIAN WHEN FEASIBLE. THE MESSAGE BOARD SHALL BE USED TO DISPLAY STATUS OF LANES WITHIN THE PROJECT. THE PRIMARY MESSAGES SHALL BE:
"RIGHT LANE CLOSED" / " x MILES AHEAD"
"LEFT LANE CLOSED" / " x MILES AHEAD"
"ALL LANES OPEN"
- ④ THREE, TYPE II BARRICADES, DRUMS, OR VERTICAL BARRICADES AT 50' CENTERS.
- ⑤ THIS SIGN SHALL BE USED WHEN 2 LANES ARE CLOSED.
- ⑥ WHEN THE LEFT LANE IS CLOSED, SWITCH THESE TWO SIGNS AND THE DIRECTION OF THE MERGE ARROW.

⑦ 48"x36" FLUORESCENT ORANGE SIGN WITH BLACK LETTERS.
48"



- ↑ ARROW BOARD
- ▭ PORTABLE CHANGEABLE MESSAGE SIGN
- ⊥ SIGN
- ⊕ TYPE II BARRICADE, DRUM, OR VERTICAL BARRICADE WITH MONODIRECTIONAL FLASHING LIGHT

GENERAL NOTE:

THIS STANDARD IS USED WHERE AT ANY TIME A LANE IS CLOSED ON A FREEWAY/EXPRESSWAY.

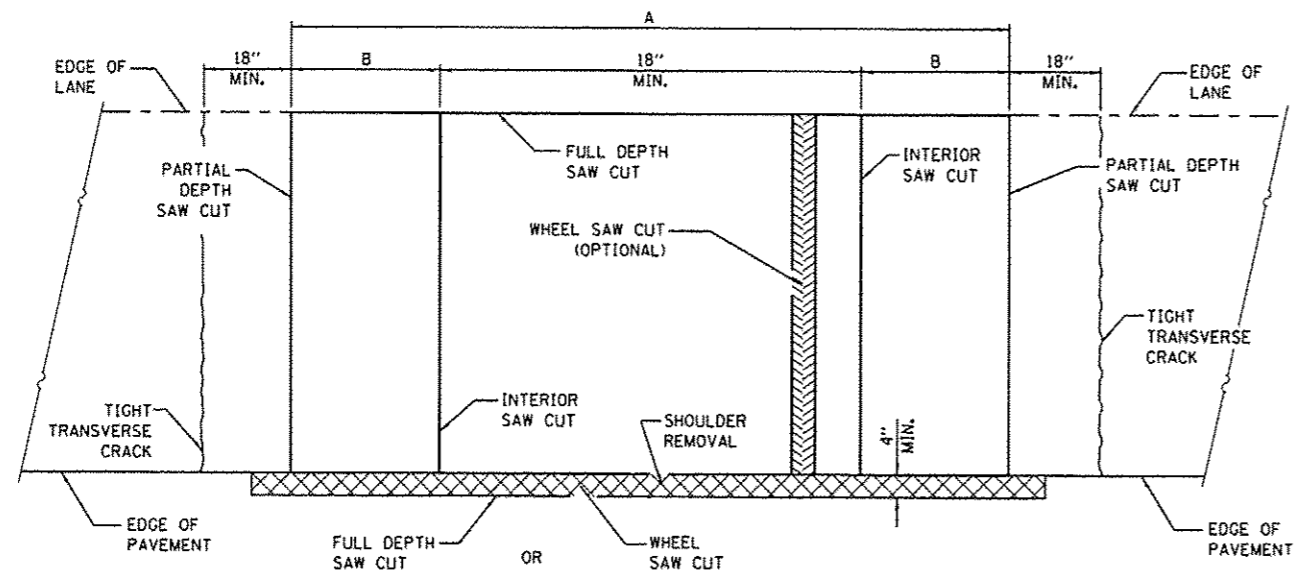
WHEN THE LEFT LANE IS CLOSED, LEFT LANE CLOSED SIGNS SHALL BE SUBSTITUTED FOR THE RIGHT LANE CLOSED SIGNS.

THE FIRST TWO SIGNS AND THE MESSAGE BOARD ARE STATIONARY. THE OTHER SIGNS AND ARROWBOARDS SHALL BE MOVED AS NECESSARY TO MAINTAIN THE REQUIRED DISTANCE FROM THE START OF THE LANE CLOSURE TAPER(S).

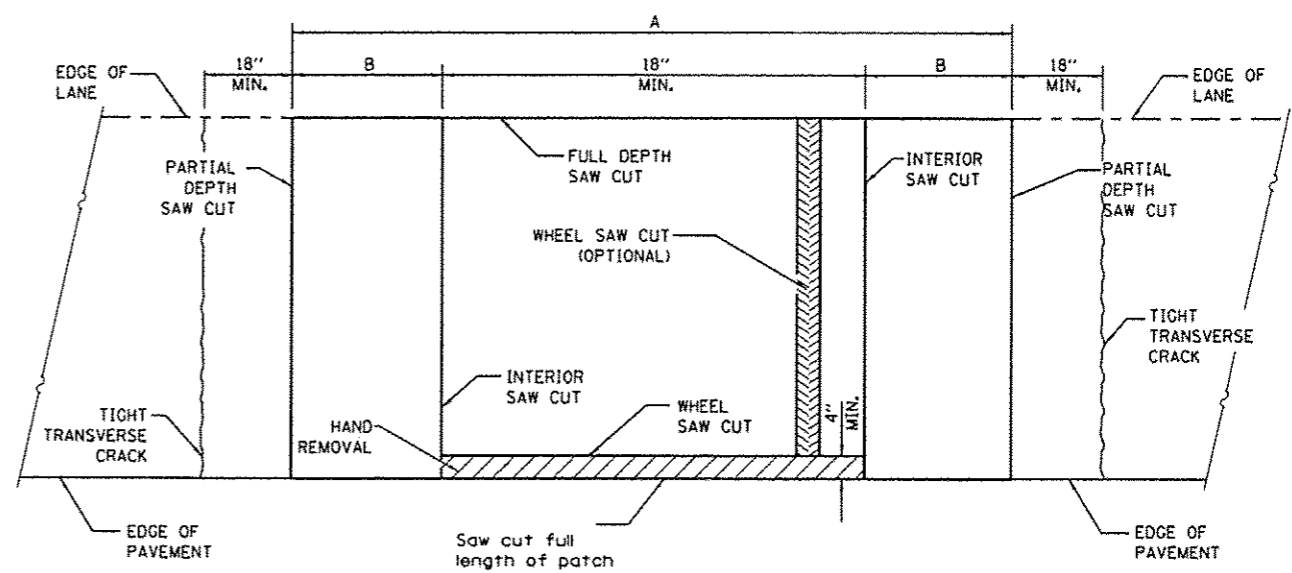
SEE SPECIAL PROVISIONS.

ALL DIMENSIONS ARE IN INCHES UNLESS OTHERWISE SHOWN.

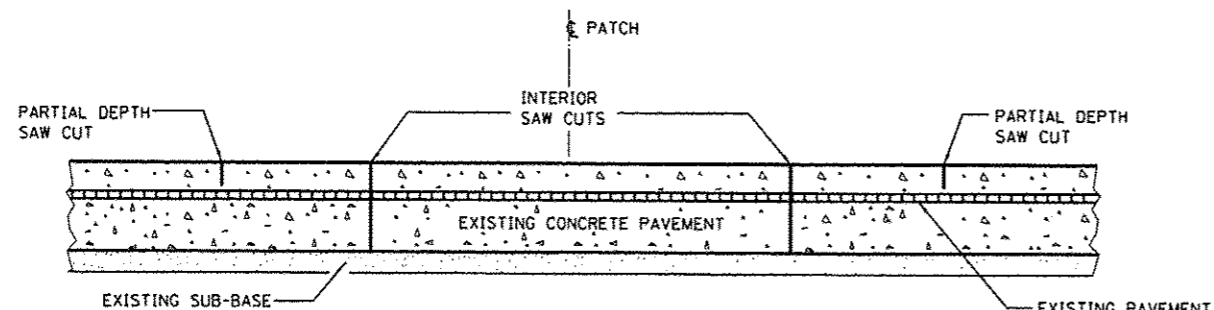
FILE NAME =	USER NAME = potelyj	DESIGNED - RW	REVISED -	STATE OF ILLINOIS DEPARTMENT OF TRANSPORTATION	TRAFFIC CONTROL AND PROTECTION STANDARD 701400 (SPECIAL)	F.A.I. RTE.	SECTION	COUNTY	TOTAL SHEETS	SHEET NO.
01\pw\work\p\ridot\potelyj\100336504\0366493-sht-details.dgn	DRAWN - RW	REVISED -	57			D3 PATCHING 2014-5	FORD	16	9	
PLOT SCALE = 1/8"=1'-0"	CHECKED -	REVISED -	CONTRACT NO. 66C93							
PLOT DATE = 4/3/2013	DATE -	REVISED -	[ILLINOIS] FED. AID PROJECT							



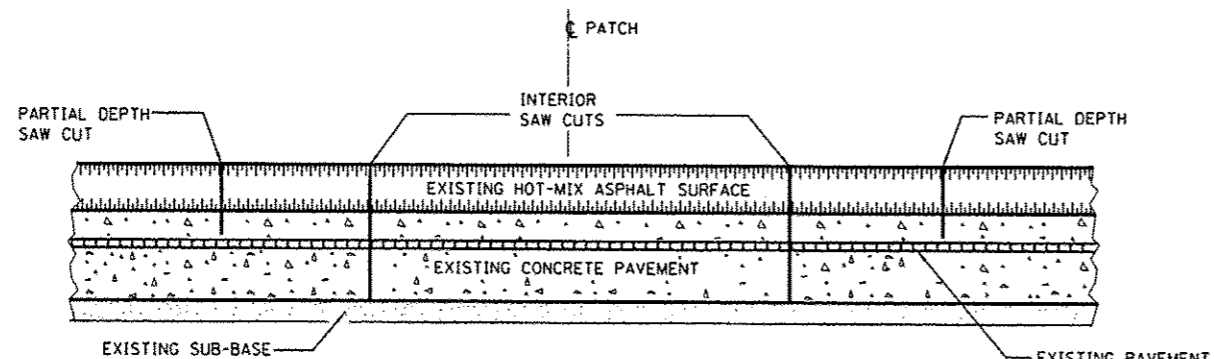
PAVEMENT SAWING DETAIL
(HMA SHOULDER)



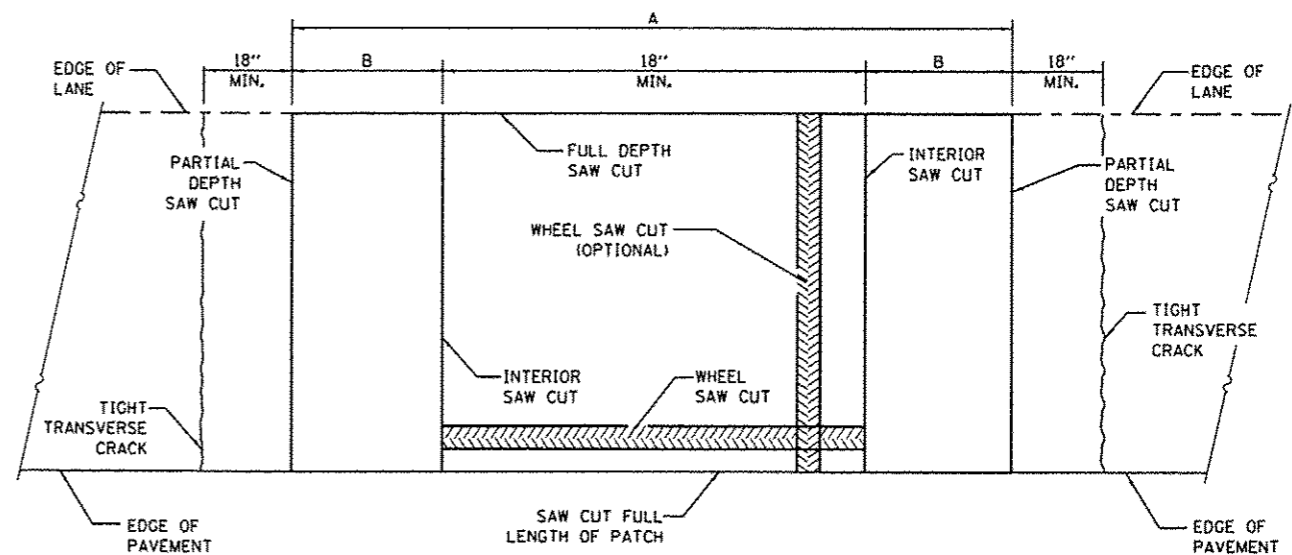
PAVEMENT SAWING DETAIL
(PCC SHOULDER)



SAW CUT DETAIL
WITHOUT HMA SURFACE



SAW CUT DETAIL
WITH HMA SURFACE



ALTERNATE SAWING DETAIL
(PCC SHOULDER)

EXISTING REINFORCEMENT BARS	A (MIN.)	B (MIN.)	C (MIN.)
#5	4'-6"	18"	16"
#6	5'-0"	21"	19"
#7	5'-6"	24"	22"
FABRIC	5'-0"	21"	18"

GENERAL NOTES

WHEN PATCHING TWO ADJACENT LANES IN ONE OPERATION THE LONGITUDINAL JOINT SHALL BE LONGITUDINAL SAWED JOINT AS DETAILED ON STANDARD 420001, HOWEVER, THE GROOVE MAYBE EITHER PREFORMED OR SAWED.

SEE STANDARD 421001 FOR DETAILS OF PAVEMENT REINFORCEMENT.

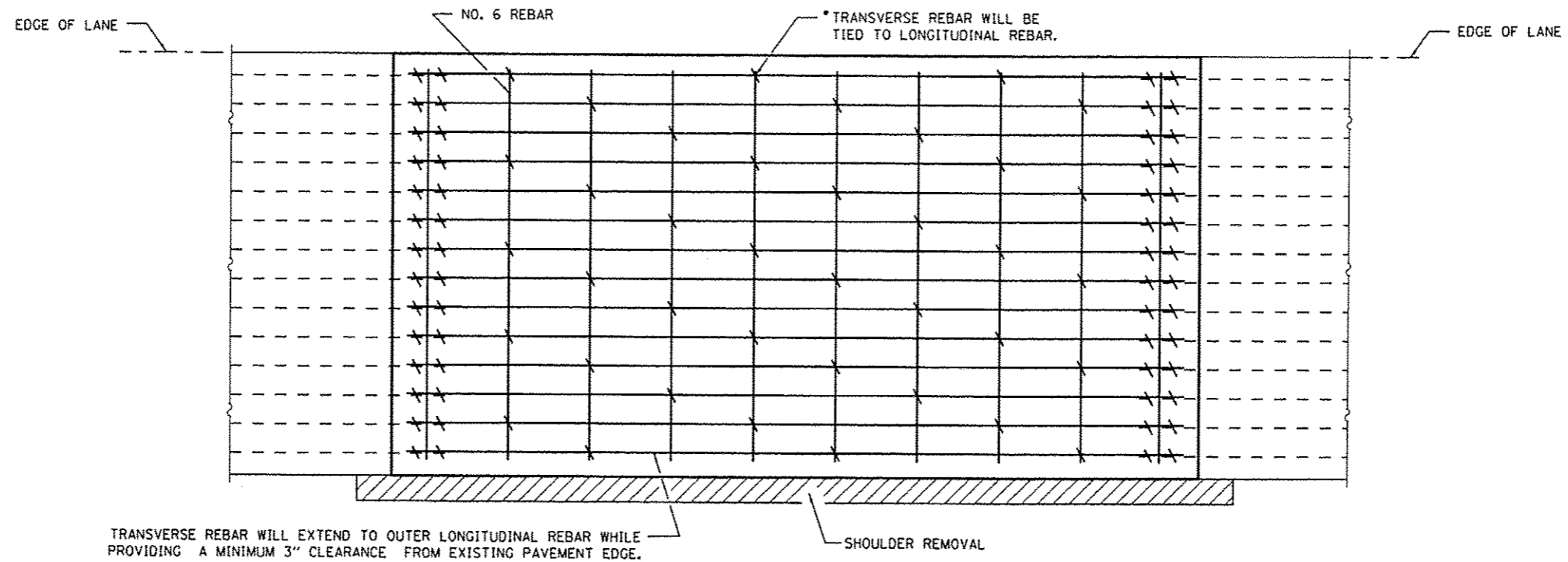
FILE NAME =	USER NAME = patelijj	DESIGNED -	REVISED -
c:\pw\work\p101\patelijj\0336504\0366	93-sht-details.dgn	DRAWN -	REVISED -
#MODELNAME#	PLOT SCALE = 1/8" = 1'-0"	CHECKED -	REVISED -
	PLOT DATE = 4/3/2013	DATE -	REVISED -

STATE OF ILLINOIS
DEPARTMENT OF TRANSPORTATION

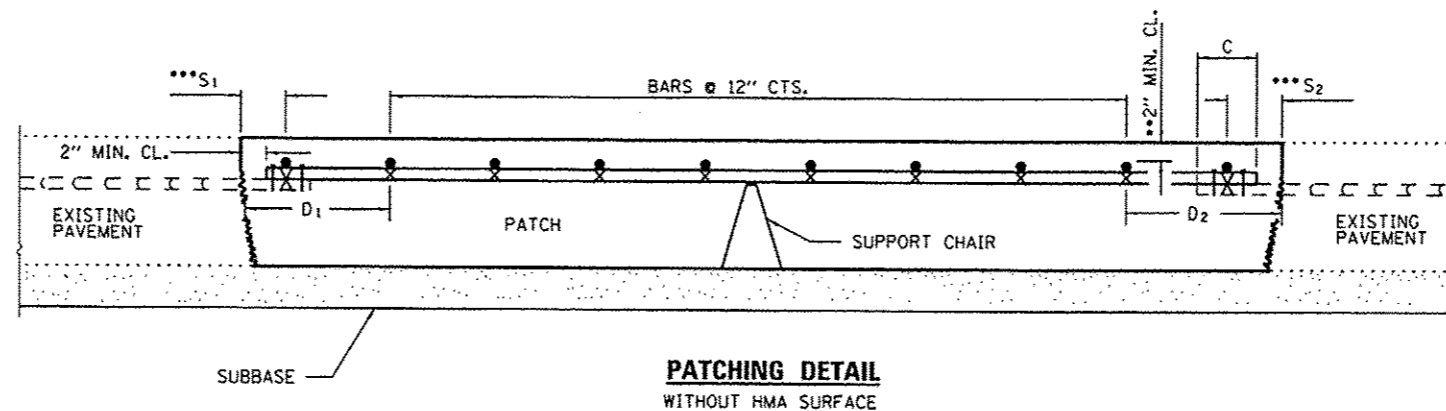
CLASS A PATCHES

SCALE: SHEET 1 OF 3 SHEETS STA. TO STA.

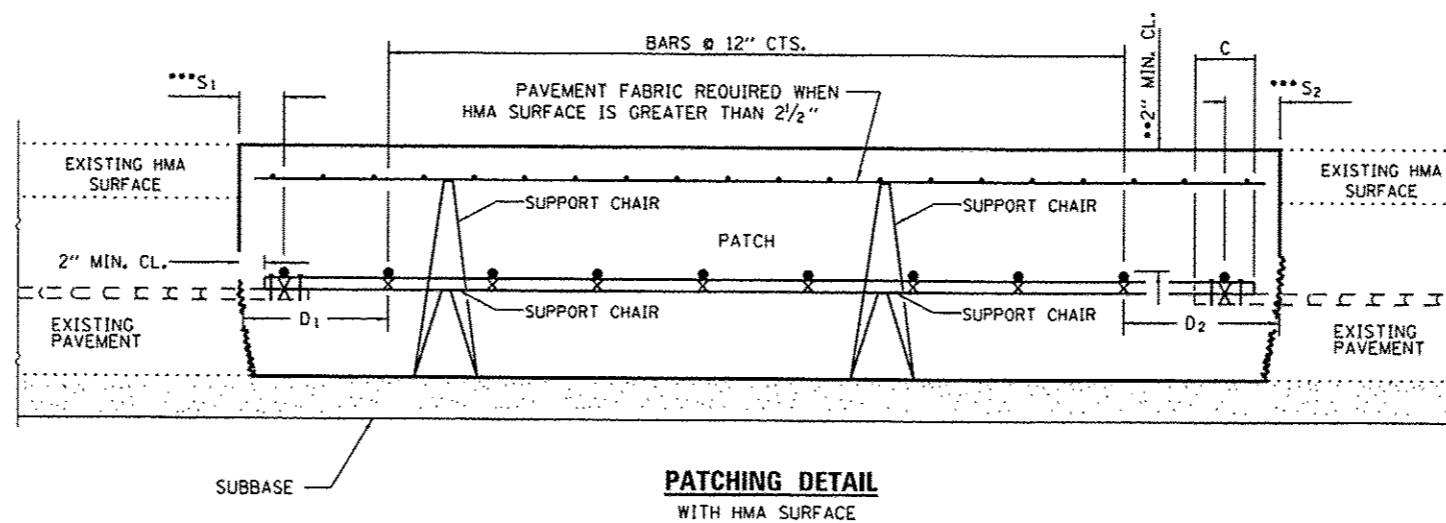
F.A.I. RTE.	SECTION	COUNTY	TOTAL SHEETS	SHEET NO.
57	D3 PATCHING 2014-5	FORD	16	10
			CONTRACT NO. 66C93	
[ILLINOIS] FED. AID PROJECT				



PAVEMENT REINFORCEMENT DETAIL



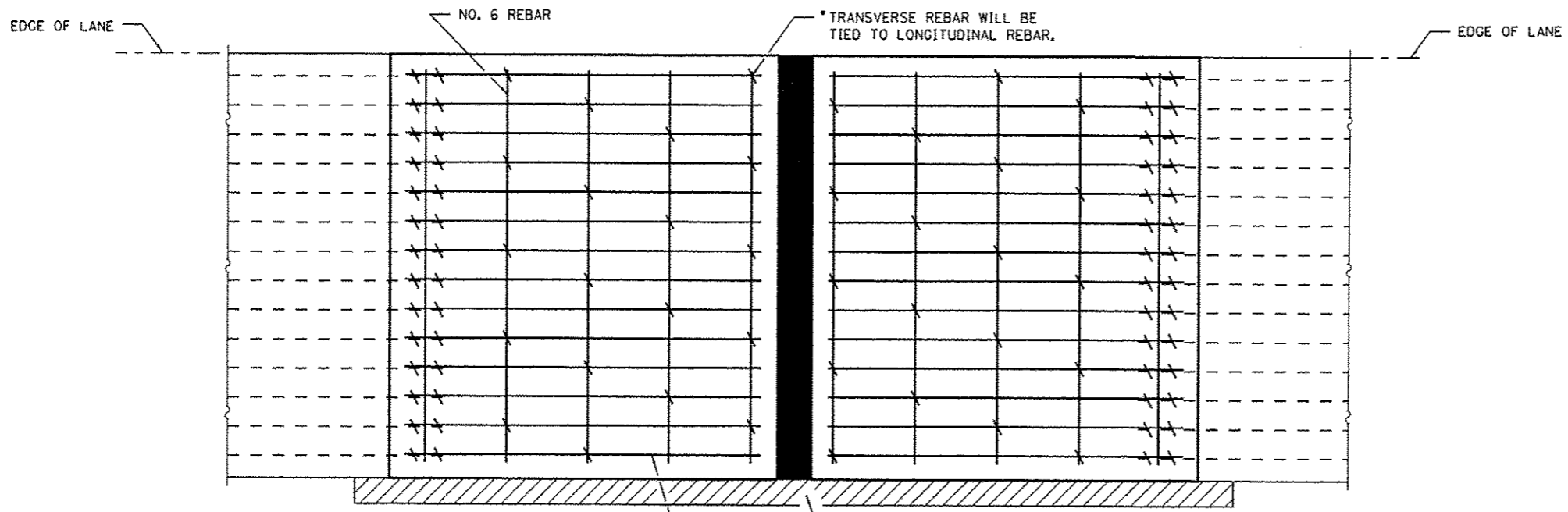
**PATCHING DETAIL
WITHOUT HMA SURFACE**



**PATCHING DETAIL
WITH HMA SURFACE**

- EVERY 3rd INTERSECTION MUST BE TIED.
 - ** WHEN THE MINIMUM CLEARANCE CANNOT BE OBTAINED WITH THE TRANSVERSE REBAR ON TOP, THEN THE TRANSVERSE REBAR SHALL BE TIED TO THE BOTTOM OF THE LONGITUDINAL REBAR.
 - ***
- VARIABLES: WHERE ¹S AND ²S ARE 2 1/2" MIN. AND 12" MAX. D = 2(S¹) AND D = 2(S²).

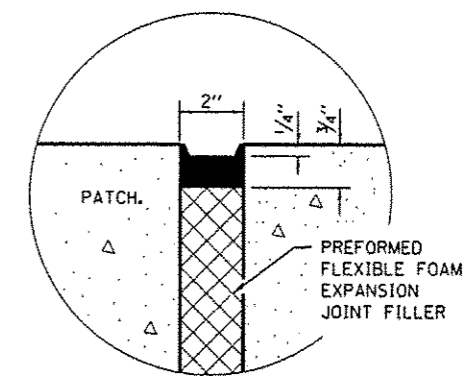
FILE NAME *	USER NAME * peteluj	DESIGNED -	REVISED -	STATE OF ILLINOIS DEPARTMENT OF TRANSPORTATION	CLASS A PATCHES	F.A.T. RTE.	SECTION	COUNTY	TOTAL SHEETS	SHEET NO.	
c:\pwork\p\dot\peteluj\0336584\0366	93-shr-details.dgn	DRAWN -	REVISED -			57	D3 PATCHING 2014-5	FORD	16	11	
#MODELNAME*	PLOT SCALE * 100.0000 1/1 in.	CHECKED -	REVISED -			SCALE: SHEET 2 OF 3 SHEETS STA. TO STA.		CONTRACT NO. 66C93			
	PLOT DATE * 4/3/2013	DATE -	REVISED -			ILLINOIS FED. AID PROJECT					



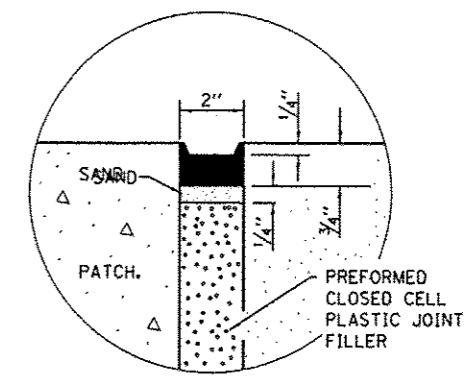
TRANSVERSE REBAR WILL EXTEND TO OUTER LONGITUDINAL REBAR WHILE PROVIDING A MINIMUM 3" CLEARANCE FROM EXISTING PAVEMENT EDGE.

SHOULDER REMOVAL

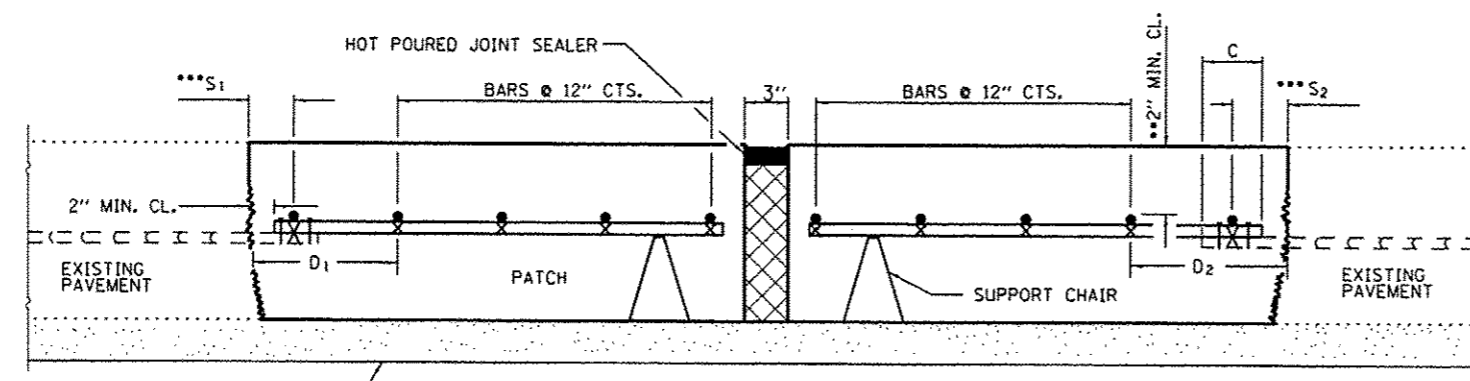
PAVEMENT REINFORCEMENT DETAIL



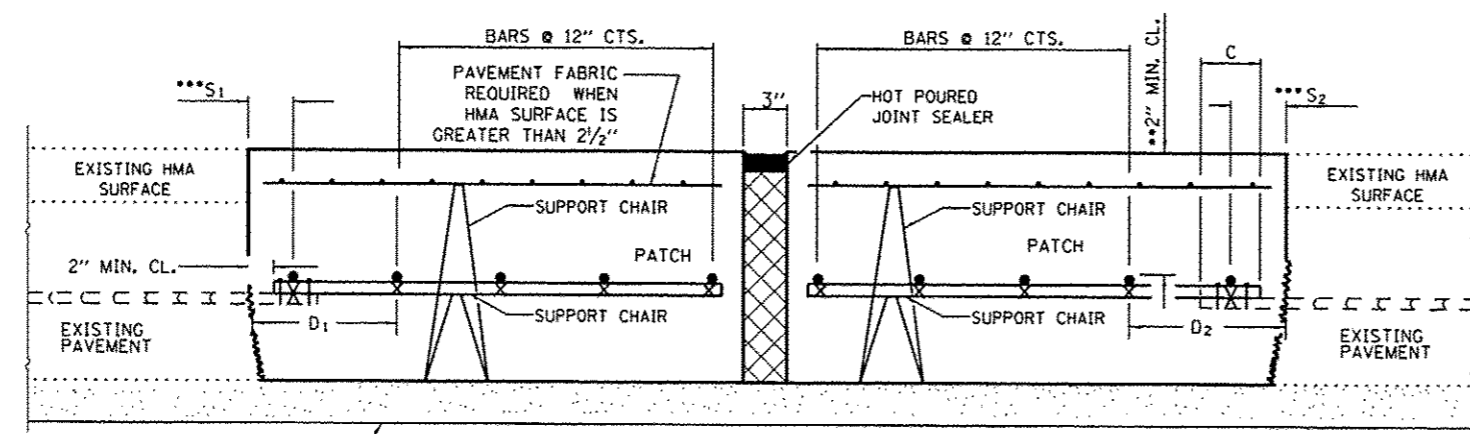
SEALING DETAIL



SEALING DETAIL



PATCHING DETAIL - EXPANSION WITHOUT HMA SURFACE



PATCHING DETAIL - EXPANSION WITH HMA SURFACE

- EVERY 3rd INTERSECTION MUST BE TIED.
 - ** WHEN THE MINIMUM CLEARANCE CANNOT BE OBTAINED WITH THE TRANSVERSE REBAR ON TOP, THEN THE TRANSVERSE REBAR SHALL BE TIED TO THE BOTTOM OF THE LONGITUDINAL REBAR.
 - ***
- VARIABLES: WHERE S_1 AND S_2 ARE $2\frac{1}{2}$ " MIN. AND 12" MAX. $D_1 = 2(S_1)$ AND $D_2 = 2(S_2)$.

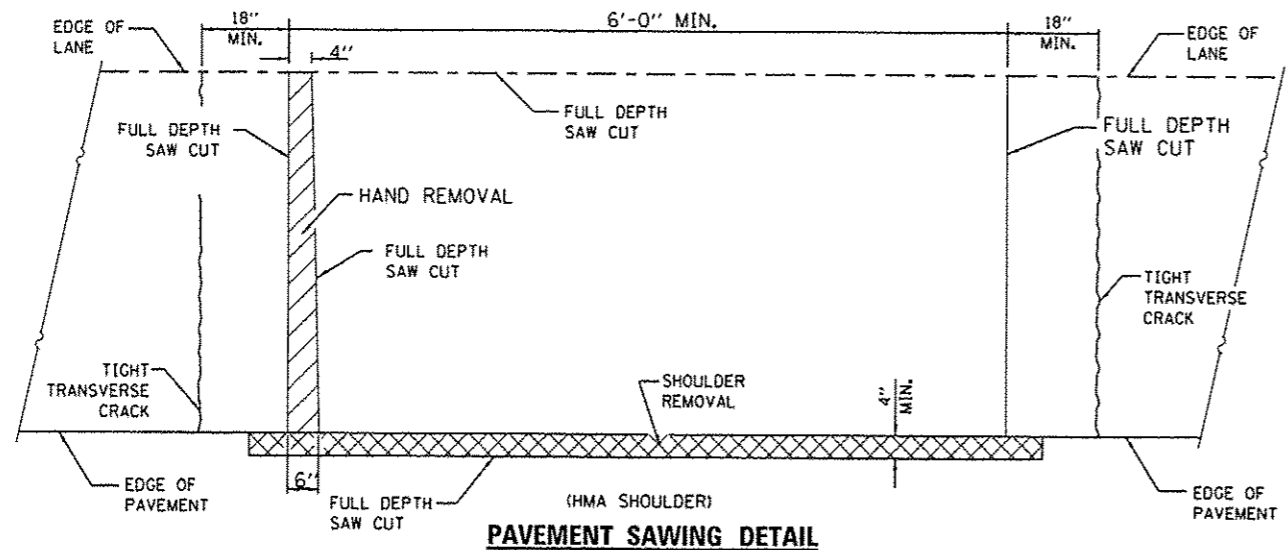
FILE NAME =	USER NAME = petelyj	DESIGNED -	REVISED -
\\pwwork\pwwork\petelyj\0336504\036504.dgn	93-shd-details.dgn	DRAWN -	REVISED -
MODELNAME#	PLOT SCALE = 100.0000 / 1 in.	CHECKED -	REVISED -
	PLOT DATE = 4/3/2013	DATE -	REVISED -

**STATE OF ILLINOIS
DEPARTMENT OF TRANSPORTATION**

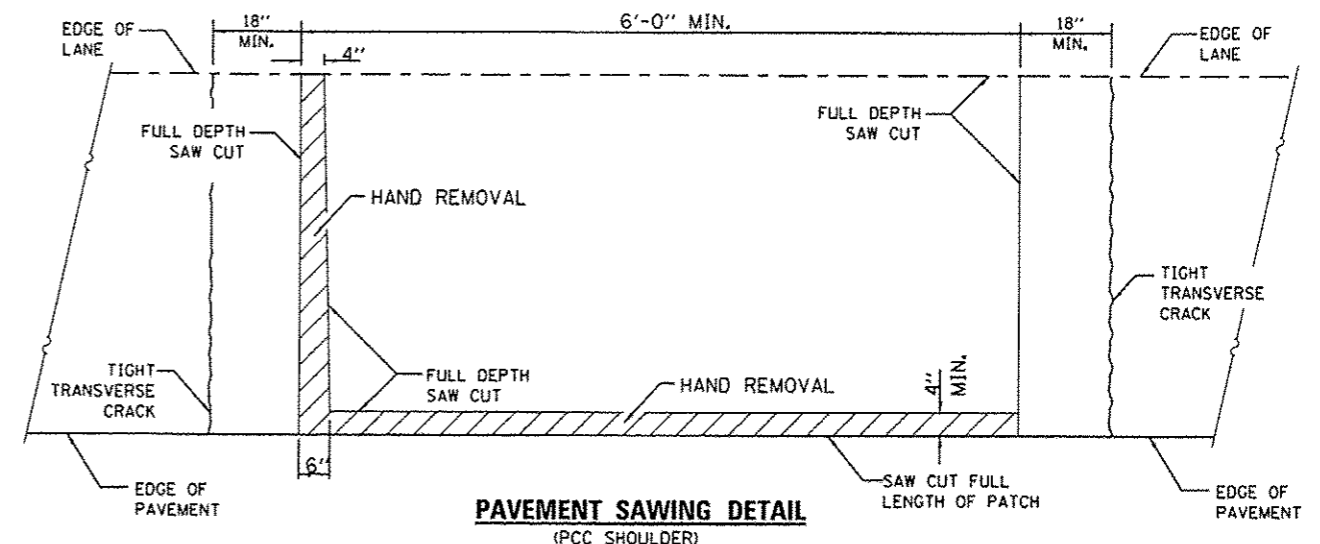
CLASS A PATCHES WITH EXPANSION

SCALE: SHEET 3 OF 3 SHEETS STA. TO STA.

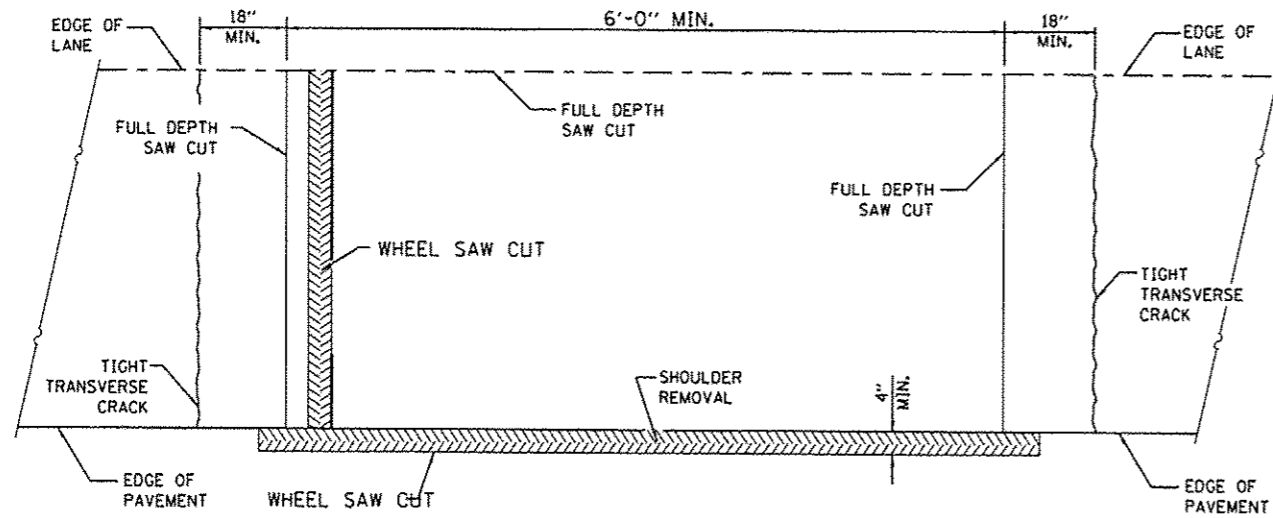
F.A.I. RTE.	SECTION	COUNTY	TOTAL SHEETS	SHEET NO.
57	D3 PATCHING 2014-5	FORD	16	12
CONTRACT NO. 66C93			ILLINOIS FED. AID PROJECT	



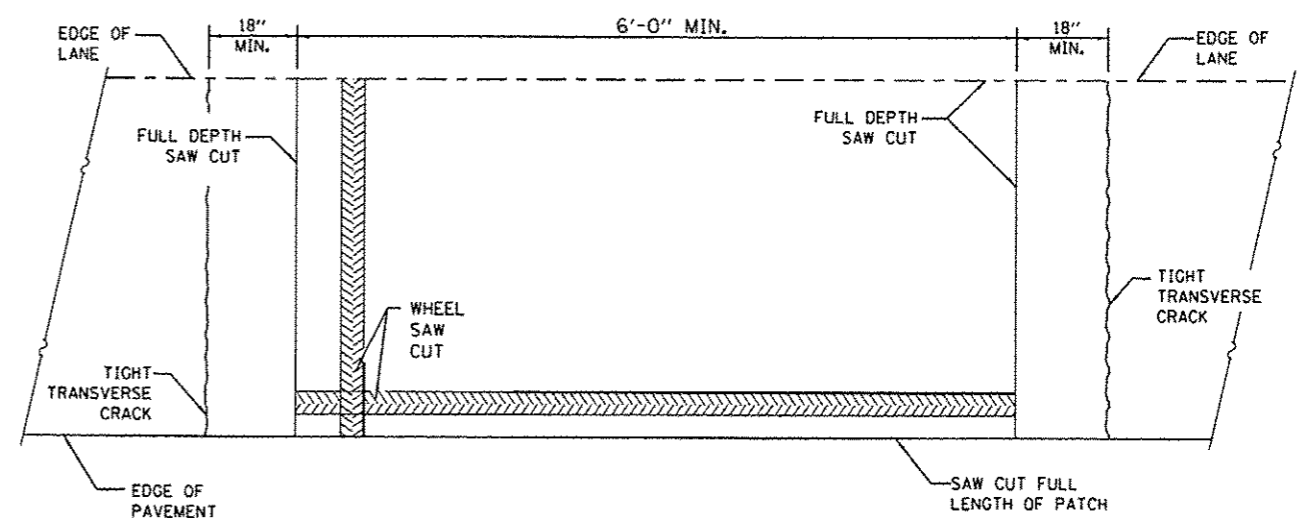
PAVEMENT SAWING DETAIL
(HMA SHOULDER)



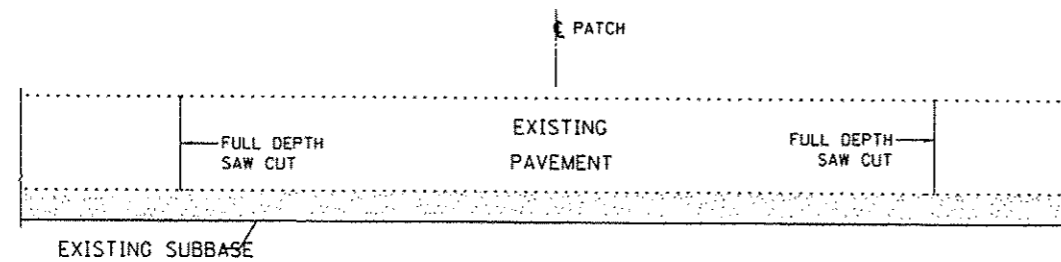
PAVEMENT SAWING DETAIL
(PCC SHOULDER)



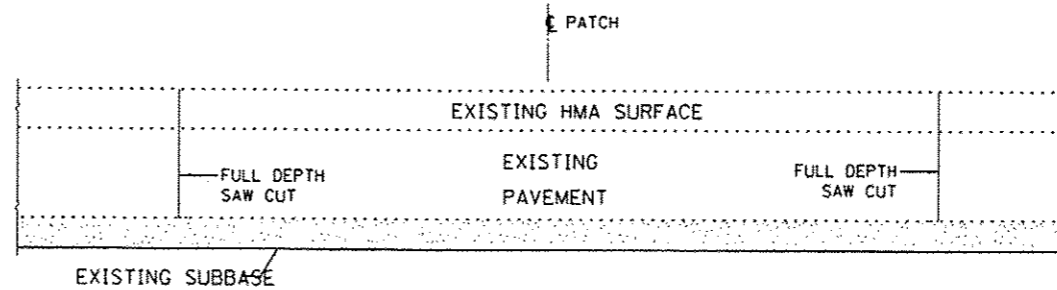
ALTERNATE SAWING DETAIL
(HMA SHOULDER)



ALTERNATE SAWING DETAIL
(PCC SHOULDER)



PATCHING DETAIL
WITHOUT HMA SURFACE



PATCHING DETAIL
WITH HMA SURFACE

GENERAL NOTES

THE TRANSVERSE JOINTS FOR CLASS B PATCHES SHALL ALIGN WITH JOINTS OR CRACKS IN THE ADJACENT LANE WHENEVER POSSIBLE.

SEE STANDARD 420701 FOR DETAIL OF PAVEMENT FABRIC.

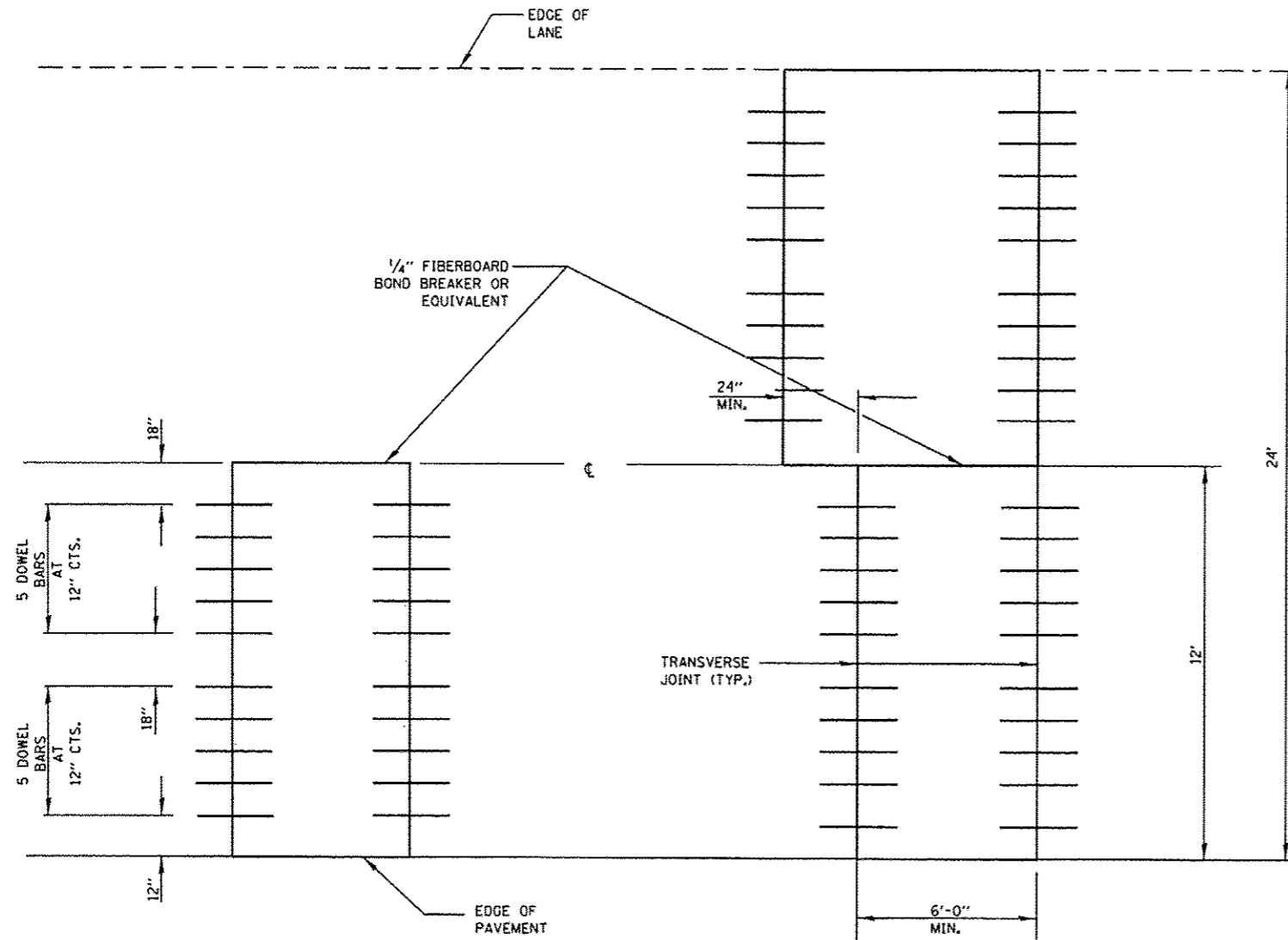
FILE NAME =	USER NAME = ptealyj	DESIGNED -	REVISED -
c:\pwork\pvidot\patealyj\033658\036693-shr-details.dgn		DRAWN -	REVISED -
#MODELNAME#	PLOT SCALE = 100.0000' / in.	CHECKED -	REVISED -
	PLOT DATE = 4/3/2013	DATE -	REVISED -

STATE OF ILLINOIS
DEPARTMENT OF TRANSPORTATION

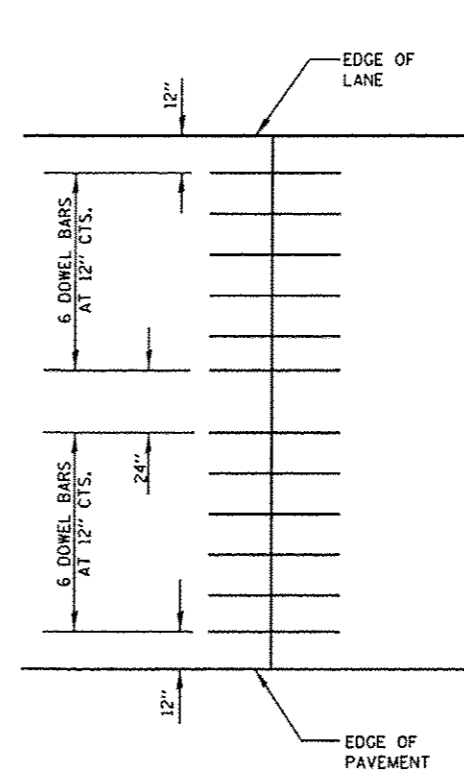
CLASS B PATCHES

SCALE: SHEET 1 OF 3 SHEETS STA. TO STA.

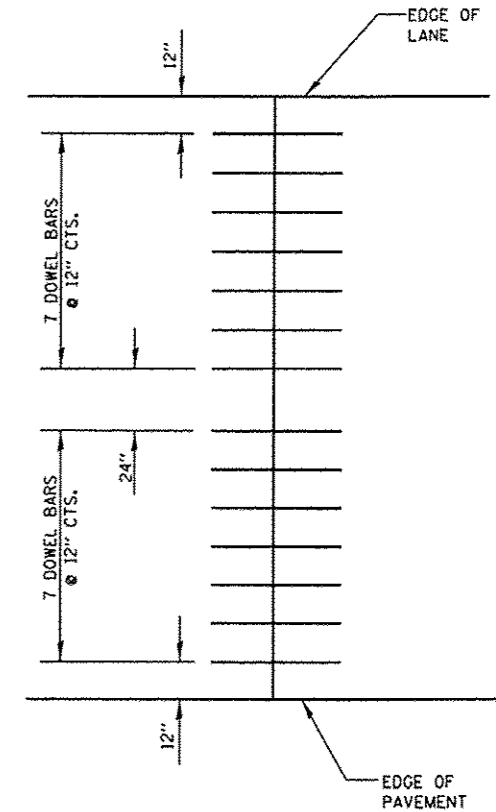
F.A.I. RTE.	SECTION	COUNTY	TOTAL SHEETS	SHEET NO.
57	03 PATCHING 2014-5	FORD	16	13
CONTRACT NO. 66C93				
ILLINOIS FED. AID PROJECT				



12' (3.6 m) WIDE LANES



14' WIDE RAMP



16' WIDE RAMP

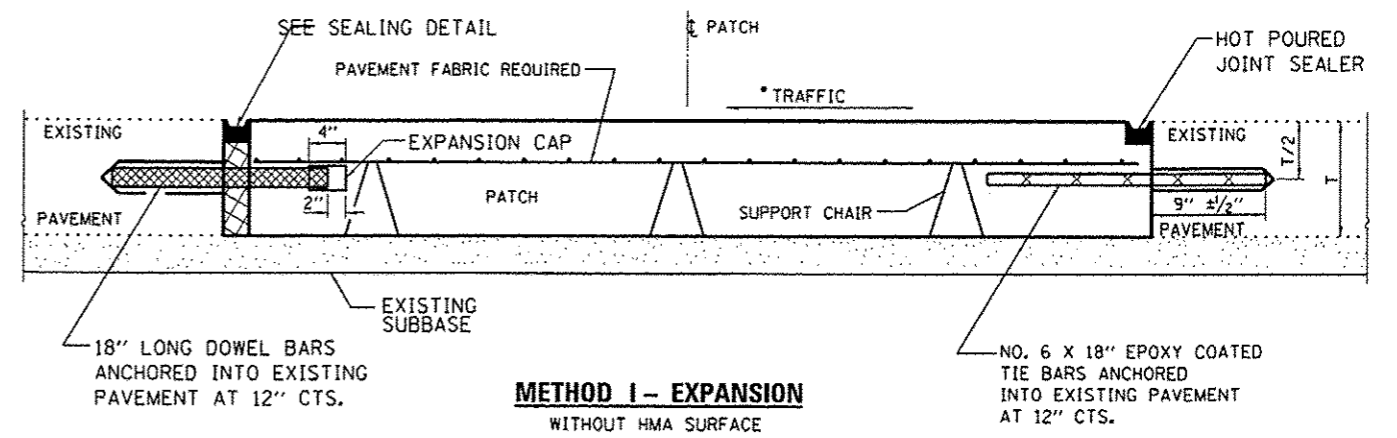
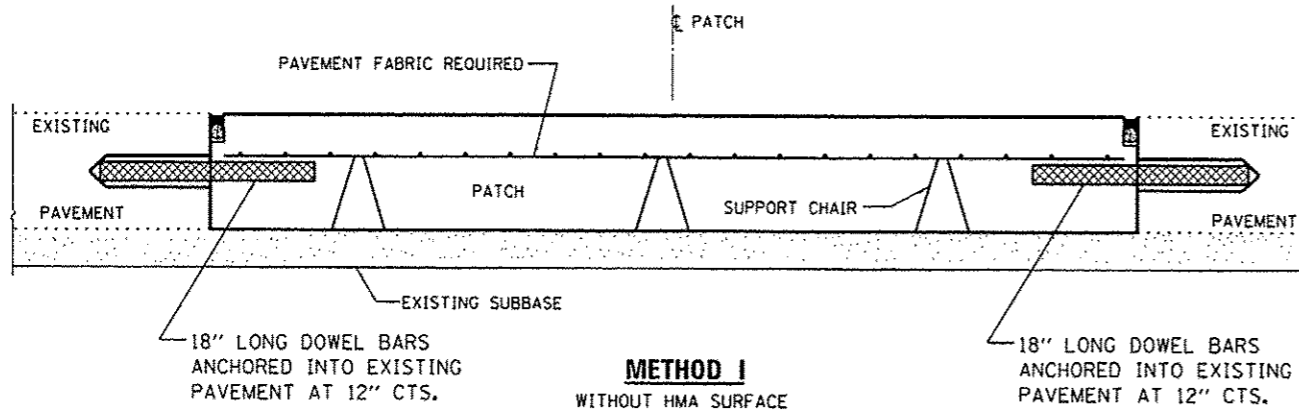
FILE NAME :	USER NAME :	DESIGNED :	REVISED :
c:\pwwork\pedit\potelyj\08336504\036693-sh1-detail.dgn	potelyj	-	-
●MODELNAME●	PLOT SCALE :	CHECKED :	REVISED :
	1/8"=1'-0" / in.	-	-
	PLOT DATE :	DATE :	REVISED :
	4/3/2013	-	-

STATE OF ILLINOIS
DEPARTMENT OF TRANSPORTATION

CLASS B PATCHES

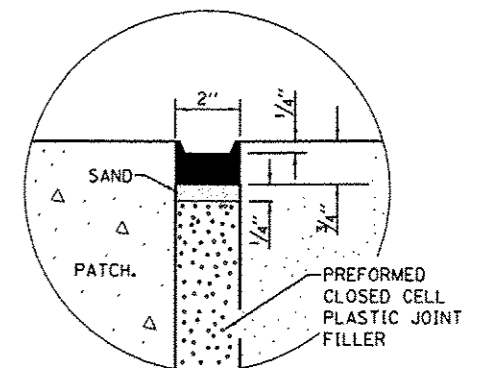
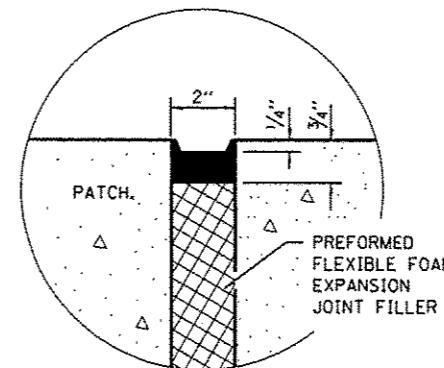
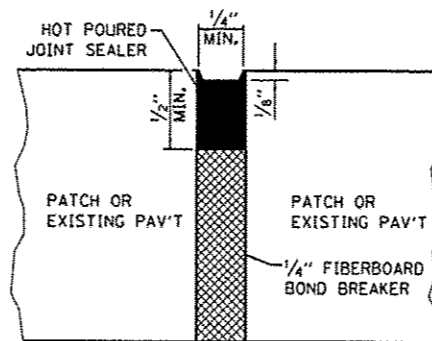
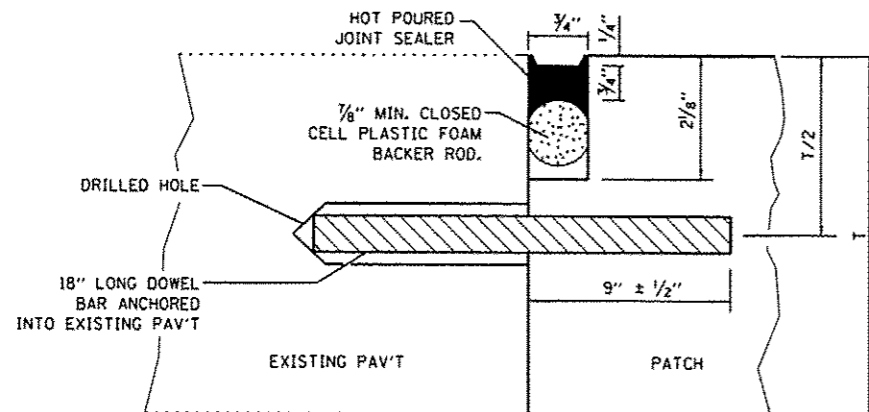
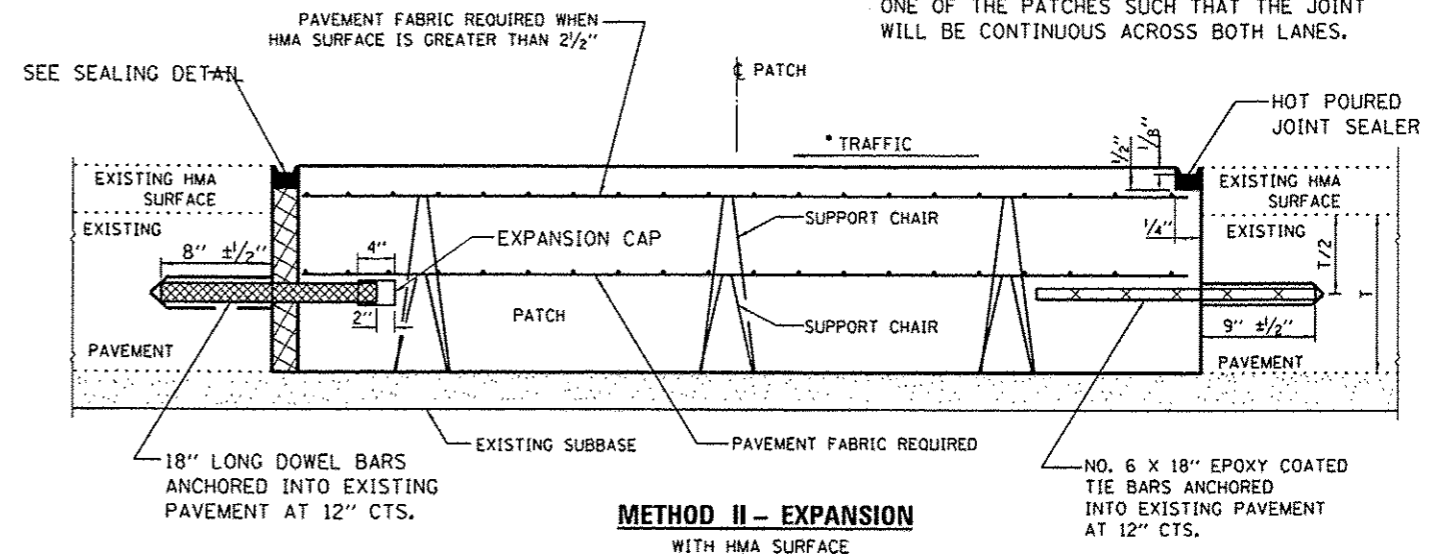
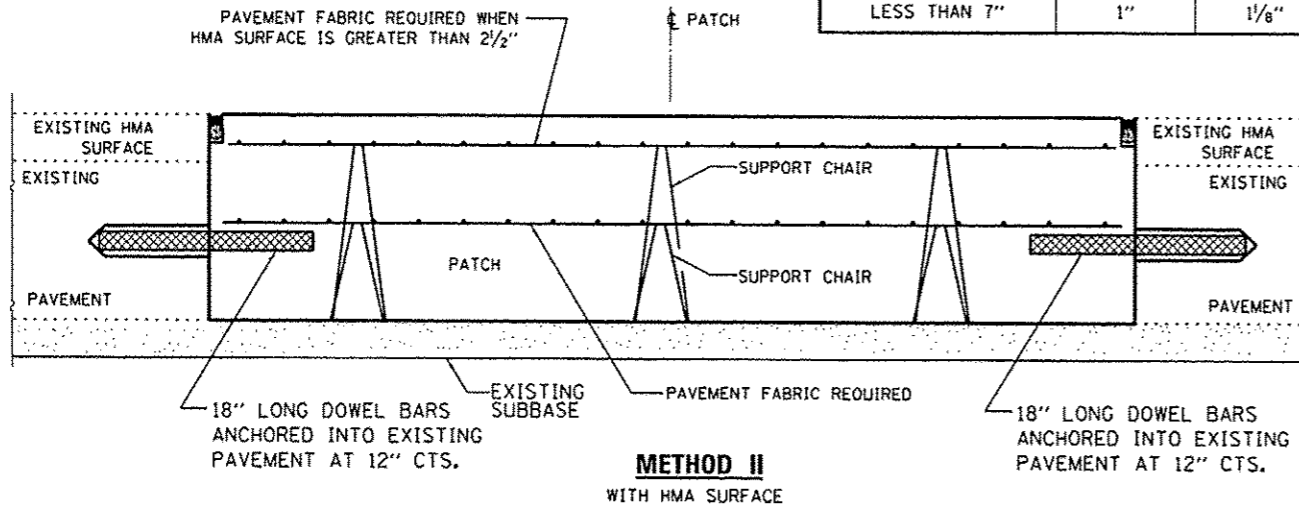
SCALE: SHEET 2 OF 3 SHEETS STA. TO STA.

F.A.I. RTE.	SECTION	COUNTY	TOTAL SHEETS	SHEET NO.
57	03 PATCHING 2014-5	FORD	16	14
CONTRACT NO. 66C93			ILLINOIS FED. AID PROJECT	



DOWEL BAR TABLE		
PAVEMENT THICKNESS	DOWEL BAR DIAMETER	HOLE DIAMETER
8" OR GREATER	1 1/2"	1 5/8"
7" THRU 7 5/8"	1 1/4"	1 3/8"
LESS THAN 7"	1"	1 1/8"

NOTE
 WHEN RE-ESTABLISHING A TRANSVERSE EXPANSION JOINT ON A TWO-LANE, TWO-WAY ROAD, REVERSE THE ORIENTATION OF THE DOWEL BARS WITH RESPECT TO TRAFFIC FOR ONE OF THE PATCHES SUCH THAT THE JOINT WILL BE CONTINUOUS ACROSS BOTH LANES.



TRANSVERSE JOINT

CENTERLINE JOINT

SEALING DETAIL

SEALING DETAIL

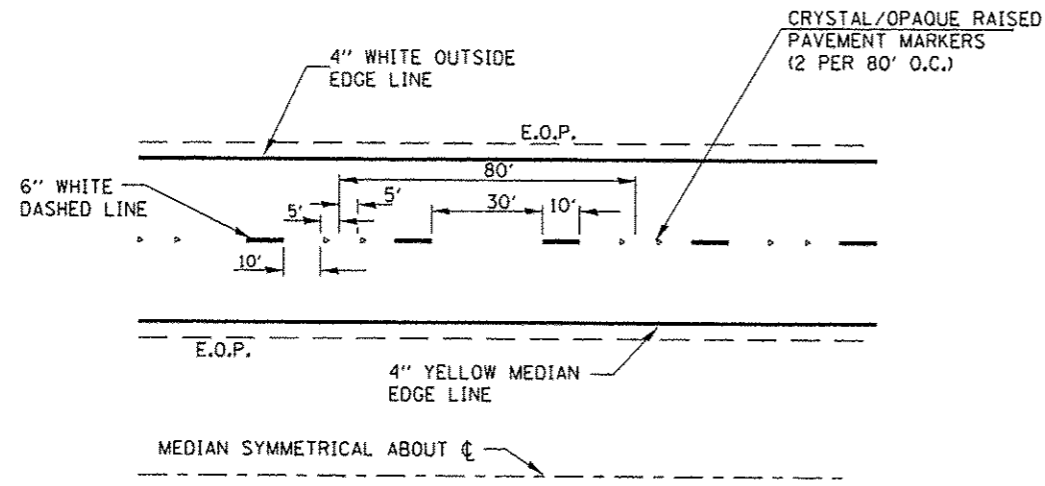
FILE NAME =	USER NAME = pataluj	DESIGNED -	REVISED -
ct:\pw\work\pilot\pataluj\0336504\0356	93-ehd-details.dgn	DRAWN -	REVISED -
#MODELNAME#	PLOT SCALE = 100.0000' / in.	CHECKED -	REVISED -
	PLOT DATE = 4/3/2013	DATE -	REVISED -

STATE OF ILLINOIS
 DEPARTMENT OF TRANSPORTATION

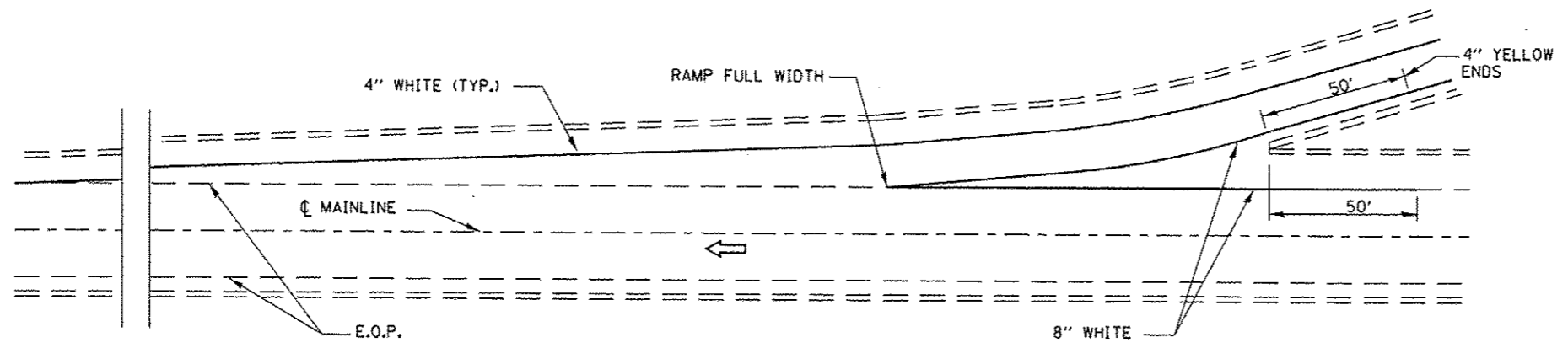
CLASS B PATCHES WITH EXPANSION

SCALE: SHEET 3 OF 3 SHEETS STA. TO STA.

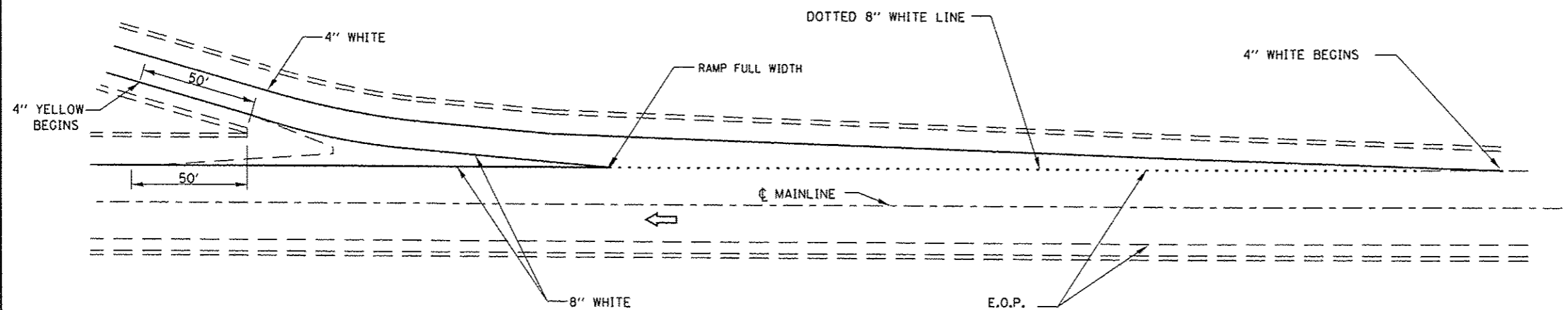
F.A.I. RTE.	SECTION	COUNTY	TOTAL SHEETS	SHEET NO.
57	D3 PATCHING 2014-5	FORD	16	15
			CONTRACT NO. 66C93	
[ILLINOIS] FED. AID PROJECT				



TYPICAL PAVEMENT MARKINGS



TYPICAL PAVEMENT MARKING FOR ENTRANCE RAMP TERMINALS



TYPICAL PAVEMENT MARKINGS FOR EXIT RAMP TERMINALS

FILE NAME =	USER NAME = petelijj	DESIGNED - RON WOODSHANK	REVISED -	STATE OF ILLINOIS DEPARTMENT OF TRANSPORTATION	TYPICAL PAVEMENT MARKING		F.A.I. RTE.	SECTION	COUNTY	TOTAL SHEETS	SHEET NO.
c:\pwwork\p\id\petelijj\0330584\0305	93-shc-details.dgn	DRAWN - RON WOODSHANK	REVISED -		57	D3 PATCHING 2014-5	FORD	16	16		
	PLOT SCALE = 100.0000' / in.	CHECKED -	REVISED -		CONTRACT NO. 66C93			ILLINOIS FED. AID PROJECT			
	PLOT DATE = 4/3/2013	DATE -	REVISED -		SCALE:	SHEET NO. 1 OF 1 SHEETS	STA.	TO STA.			