

F.A.I. RTE.	SECTION	COUNTY	TOTAL SHEETS	SHEET NO.
80	D3 PATCHING 2014-6	GRUNDY	13	1
		ILLINOIS	CONTRACT NO. 66C95	

06-14-13 LETTING ITEM 209

STATE OF ILLINOIS

DEPARTMENT OF TRANSPORTATION

DIVISION OF HIGHWAYS

PROPOSED HIGHWAY PLANS

FAI ROUTE 80 (I-80)

SECTION D3 PATCHING 2014-6

PAVEMENT PATCHING
GRUNDY COUNTY

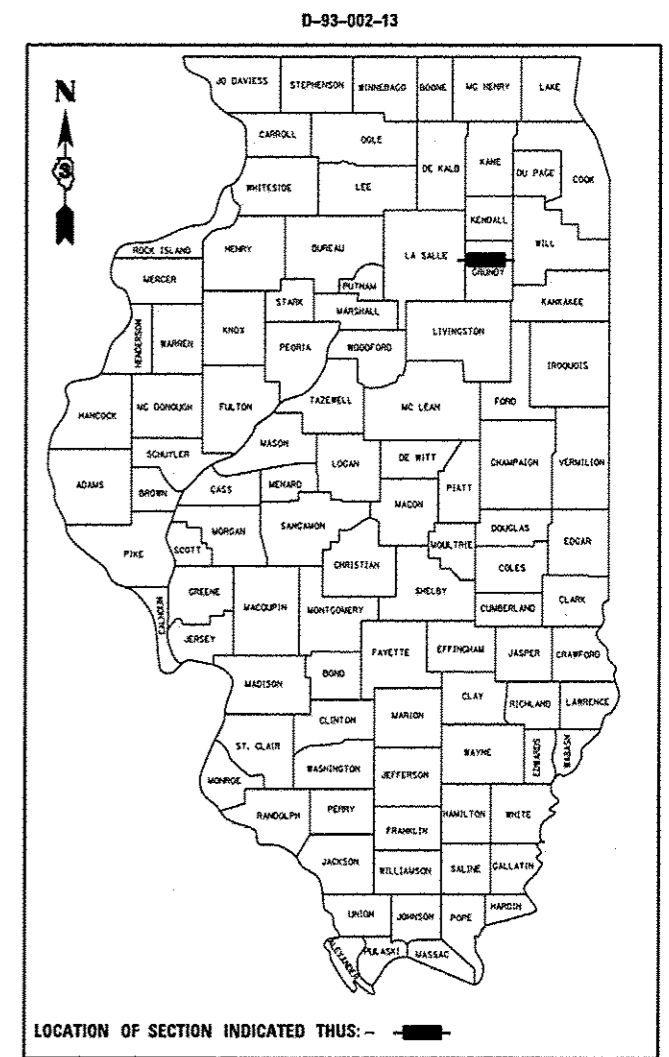
C-93-089-13

INDEX OF SHEETS

1. COVER SHEET
2. GENERAL NOTES
3. SUMMARY OF QUANTITIES
4. TYPICAL SECTIONS
- 5 - 6. SCHEDULES
7. TRAFFIC CONTROL AND PROTECTION, STANDARD 701400 (SPECIAL)
- 8 - 10. CLASS A PATCHES
- 11 - 12. PAVEMENT PATCH (EXPANSION)
13. TYPICAL PAVEMENT MARKINGS

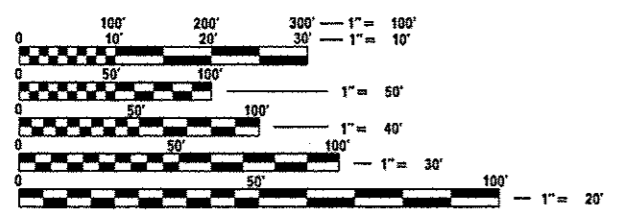
HIGHWAY STANDARDS

- 000001-06 STANDARD SYMBOLS, ABBREVIATIONS AND PATTERNS
- 001001-02 AREAS OF REINFORCEMENT BARS
- 001006 DECIMAL OF AN INCH AND OF A FOOT
- 420701-02 PAVEMENT FABRIC
- 421001-02 BAR REINFORCEMENT FOR CRC PAVEMENT
- 701101-03 OFF-ROAD OPERATIONS MULTILANE, 15' (4.5 m) TO 24" (600 mm) FROM PAVEMENT EDGE
- 701401-07 LANE CLOSURE, FREEWAY/EXPRESSWAY
- 701411-08 LANE CLOSURE, MULTILANE, AT ENTRANCE OR EXIT RAMP FOR SPEEDS ≥ 45 MPH
- 701426-05 LANE CLOSURE, MULTILANE INTERMITTENT OR MOVING OPERATION, FOR SPEEDS ≥ 45 MPH
- 701901-02 TRAFFIC CONTROL DEVICES



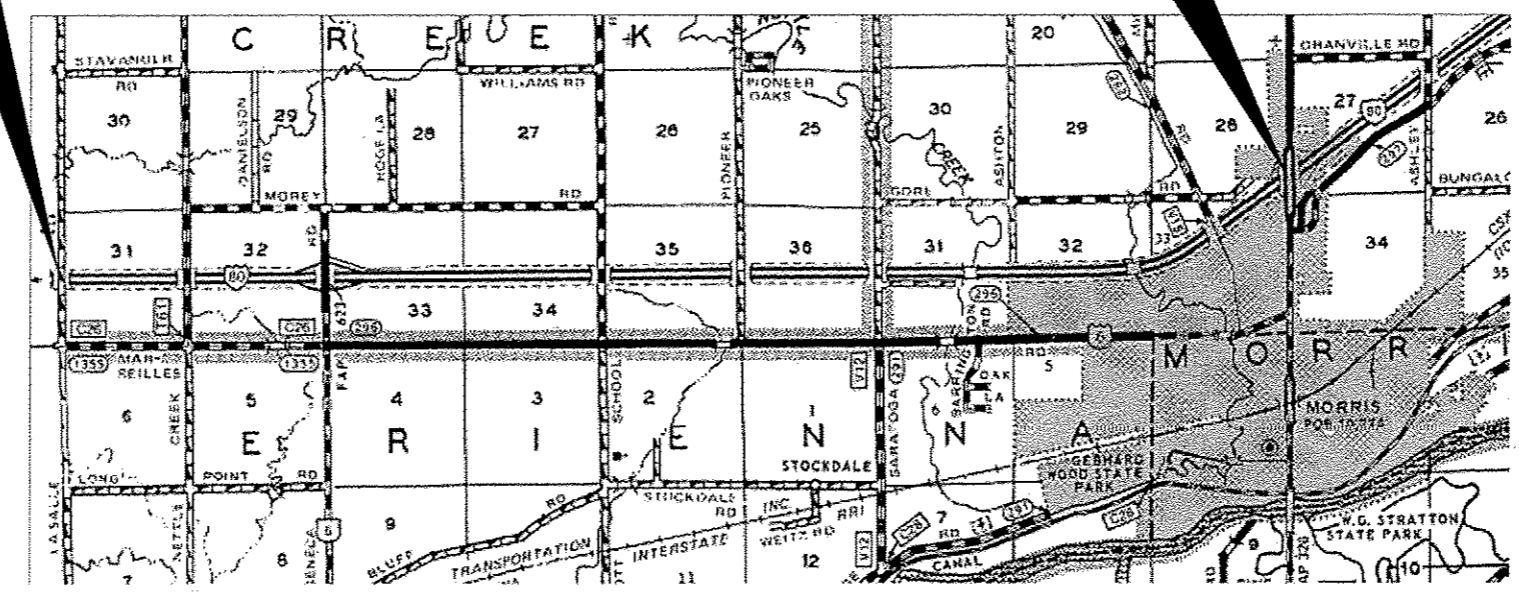
PROJECT BEGINS
LASALLE COUNTY LINE
(M.P. 102.98)

PROJECT ENDS
IL ROUTE 47
(M.P. 112.12)



FULL SIZE PLANS HAVE BEEN PREPARED USING STANDARD ENGINEERING SCALES. REDUCED SIZED PLANS WILL NOT CONFORM TO STANDARD SCALES. IN MAKING MEASUREMENTS ON REDUCED PLANS, THE ABOVE SCALES MAY BE USED.

J.U.L.I.E.
JOINT UTILITY LOCATION INFORMATION FOR EXCAVATION
1-800-892-0123
OR 811



LOCATION MAP
NOT TO SCALE

GROSS LENGTH = 48260 FT. = 9.140 MI.
NET LENGTH = 264 FT. = 0.050 MI

PROJECT ENGINEER: JOE KANNEL P.E.
UNIT CHIEF: RON WOODSHANK
TOWNSHIP: NETTLE CREEK, SARATOGA
CONTRACT NO. 66C95

STATE OF ILLINOIS
DEPARTMENT OF TRANSPORTATION
DIVISION OF HIGHWAYS

SUBMITTED Paul A. Tata
DEPUTY DIRECTOR OF HIGHWAYS, REGION ENGINEER

May 10 2013
John D. Baranzelli, P.E.
acting ENGINEER OF DESIGN AND ENVIRONMENT

May 10 2013
Omar Osman, P.E.
DIRECTOR OF HIGHWAYS, CHIEF ENGINEER

**PRINTED BY THE AUTHORITY
OF THE STATE OF ILLINOIS**

GENERAL NOTES

PLAN DIMENSIONS AND DETAILS RELATIVE TO EXISTING PLANS ARE SUBJECT TO NOMINAL CONSTRUCTION VARIATIONS. THE CONTRACTOR SHALL FIELD VERIFY EXISTING DIMENSIONS AND DETAILS AFFECTING NEW CONSTRUCTION AND MAKE NECESSARY APPROVED ADJUSTMENTS PRIOR TO CONSTRUCTION OR ORDERING OF MATERIALS. SUCH VARIATIONS SHALL NOT BE CAUSE FOR ADDITIONAL COMPENSATION FOR A CHANGE IN SCOPE OF WORK; HOWEVER, THE CONTRACTOR WILL BE PAID FOR THE QUANTITY ACTUALLY FURNISHED AT THE UNIT PRICE BID FOR THE WORK.

FOR STABILIZATION, ALL TYPE III BARRICADES WILL REQUIRE A MINIMUM OF FOUR SAND BAGS PER BARRICADE.

ANY REFERENCE TO A STANDARD IN THESE PLANS SHALL BE INTERPRETED TO MEAN THE EDITION AS INDICATED BY THE SUBNUMBER SHOWN IN THE LIST OF STANDARDS OR THE COPY INCLUDED IN THESE PLANS.

THE CONTRACTOR SHALL CONTACT JULIE AT LEAST 48 HOURS PRIOR TO EXCAVATION TO DETERMINE WHICH UTILITIES ARE IN THE AREA.

COMMITMENTS

DISPOSAL OF EXCAVATED MATERIALS. ALL UNSUITABLE OR UNSTABLE MATERIALS, DEFINED AS SOILS, EMBANKMENTS, SUB-BASE GRANULAR MATERIALS, AND/OR AGGREGATE MATERIALS THAT ARE EXCAVATED DUE TO CONSTRUCTION OPERATIONS SHALL BE DISPOSED OF WITHIN THE LIMITS OF THE EXISTING RIGHT OF WAY. DISPOSAL OF EXCAVATED MATERIALS, AS DEFINED ABOVE, OFF THE EXISTING RIGHT OF WAY SHALL NOT BE PERMITTED.

EXCAVATED MATERIALS SHALL BE DISPOSED OF AT LOCATIONS DIRECTED BY THE ENGINEER. ANY SUCH DISPOSAL SHALL NOT CREATE AND UNSIGHTLY OR OBJECTIONABLE APPEARANCE OR DETRACT FROM THE NATURAL TOPOGRAPHIC FEATURES WITHOUT WRITTEN PERMISSION FROM THE ENGINEER.

DATE: 4-3-2013

PREPARED BY: Dino Bravakos
DISTRICT STUDIES & PLANS ENGINEER

EXAMINED BY: [Signature]
DISTRICT CONSTRUCTION ENGINEER

Wayne L. Phillips
DISTRICT MATERIALS ENGINEER

Bruce A. Fischer
DISTRICT OPERATIONS ENGINEER

FILE NAME *	USER NAME * patelyj	DESIGNED - RW	REVISED -
c:\pawork\pawidat\patelyj\d0337548\0366495-shr-details.dgn		DRAWN - RW	REVISED -
PLOT SCALE * 100.0000' / 1"		CHECKED -	REVISED -
PLOT DATE * 4/3/2013		DATE -	REVISED -

STATE OF ILLINOIS
DEPARTMENT OF TRANSPORTATION

GENERAL NOTES

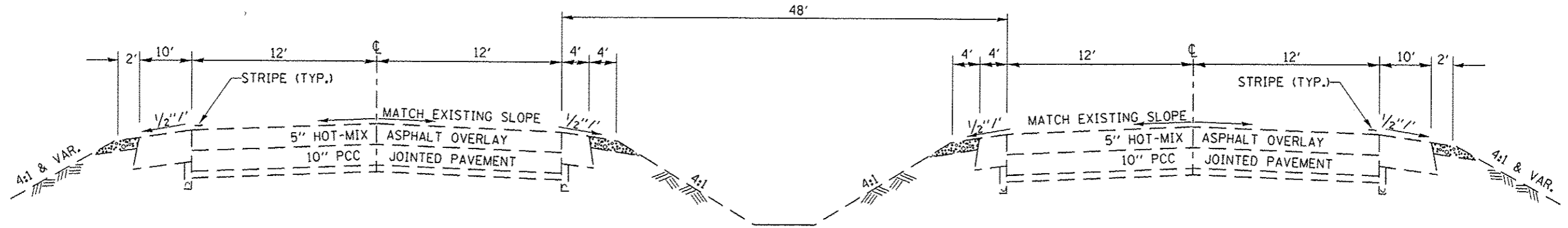
SCALE: SHEET NO. 1 OF 1 SHEETS STA. TO STA.

F.A.I. RTE.	SECTION	COUNTY	TOTAL SHEETS	SHEET NO.
80	D3 PATCHING 2014-6	GRUNDY	13	2
ILLINOIS FED. AID PROJECT			CONTRACT NO. 66C95	

CODE NO.	ITEM	UNIT	TOTAL QUANTITY	CONSTR. CODE	
				STATE 100%	
				ROADWAY 0005	
				RURAL	URBAN
20200100	EARTH EXCAVATION	CU YD	151	91	60
21001000	GEOTECHNICAL FABRIC FOR GROUND STABILIZATION	SO YD	331	200	131
31101810	SUBBASE GRANULAR MATERIAL, TYPE B 12"	SO YD	331	200	131
44200645	CLASS A PATCHES, TYPE II, 16 INCH	SO YD	177	99	78
44200647	CLASS A PATCHES, TYPE IV, 16 INCH	SO YD	154	101	53
44201037	CLASS B PATCHES, TYPE IV, 15 INCH	SO YD	27	27	
44201294	CLASS B PATCH - EXPANSION JOINT	FOOT	12	12	
44201299	DOWEL BARS 1 1/2"	EACH	10	10	
44213000	PATCHING REINFORCEMENT	SO YD	331	200	131
44213100	PAVEMENT FABRIC	SO YD	385	254	131
44213200	SAW CUTS	FOOT	1757	1079	678
44213204	TIE BARS 3/4"	EACH	47	27	20
67100100	MOBILIZATION	L SUM	1	0.5	0.5
70100420	TRAFFIC CONTROL AND PROTECTION, STANDARD 701411	EACH	6	4	2
70103815	TRAFFIC CONTROL SURVEILLANCE	CAL DA	30	15	15
* 78009004	MODIFIED URETHANE PAVEMENT MARKING - LINE 4"	FOOT	247	149	98
* 78009006	MODIFIED URETHANE PAVEMENT MARKING - LINE 6"	FOOT	300	190	110
X0325969	PORTABLE, VEHICLE MOUNTED, CHANGEABLE MESSAGE BOARD	CAL DA	30	15	15
X0326867	RADAR SPEED TRAILER	CAL MO	1	0.5	0.5
X0326880	MESSAGE BOARD VEHICLE DRIVER	HOUR	60	30	30
X7010805	TRAFFIC CONTROL AND PROTECTION, STANDARD 701401 (SPECIAL)	L SUM	1	0.5	0.5

* SPECIALITY ITEMS

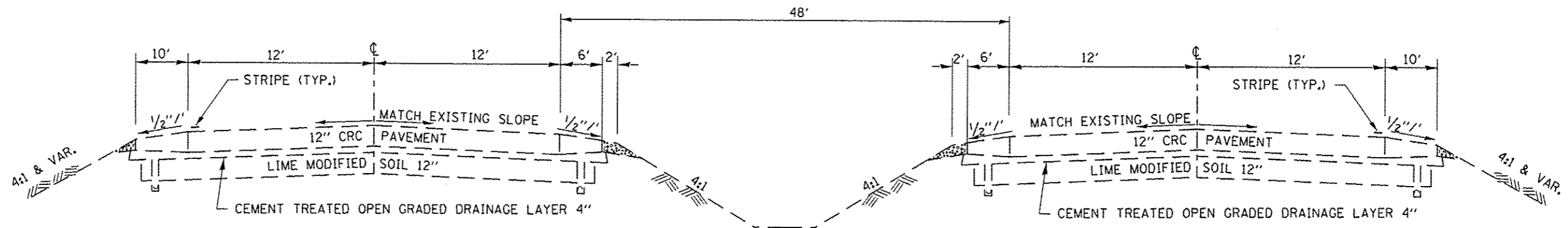
FILE NAME : c:\pr-work\pwidest\woodshankr1\d0337540\66C95-ahd-details.dgn	USER NAME : woodshankr1	DESIGNED - RW	REVISED -	STATE OF ILLINOIS DEPARTMENT OF TRANSPORTATION	SUMMARY OF QUANTITIES	F.A.I. RTE.	SECTION	COUNTY	TOTAL SHEETS	SHEET NO.
PLT SCALE : 100:0000 / 1 in.	CHECKED -	REVISED -	80			D3 PATCHING 2014-6	GRUNDY	13	3	
PLT DATE : 5/6/2013	DATE -	REVISED -	CONTRACT NO. 66C95			ILLINOIS FED. AID PROJECT				
SCALE:		SHEET NO. 1 OF 1 SHEETS				STA.	TO STA.			



**MAINLINE
TYPICAL SECTION
M.P. 104.89 TO M.P. 105.41
WEST BOUND**

**MAINLINE
TYPICAL SECTION
M.P. 104.89 TO M.P. 105.41
EAST BOUND**

TYPICAL NO. 1



**MAINLINE
TYPICAL SECTION
M.P. 105.41 TO M.P. 112.12
WEST BOUND**

**MAINLINE
TYPICAL SECTION
M.P. 105.41 TO M.P. 112.12
EAST BOUND**

TYPICAL NO. 2

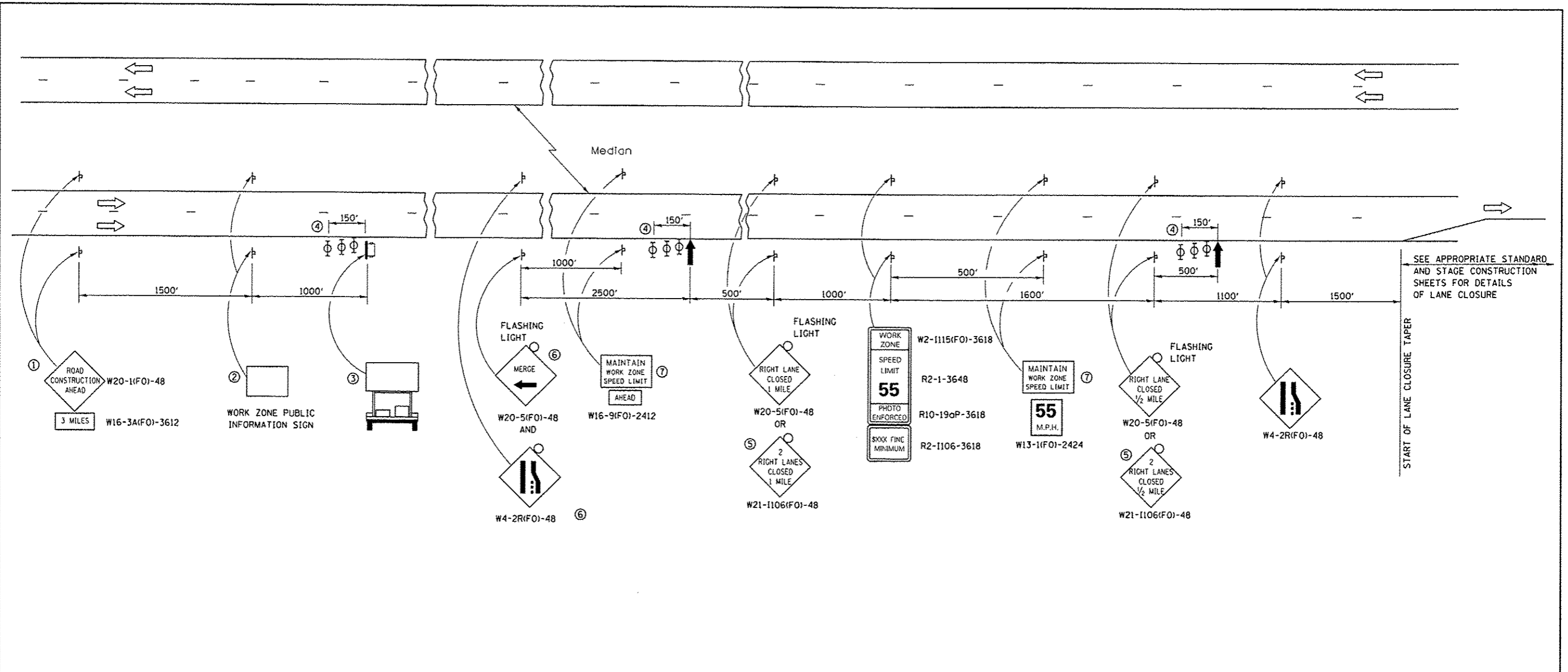
FILE NAME *	USER NAME = woodshankr1	DESIGNED - RW	REVISED -	STATE OF ILLINOIS DEPARTMENT OF TRANSPORTATION	TYPICAL SECTIONS			F.A.I. RTE.	SECTION	COUNTY	TOTAL SHEETS	SHEET NO.	
c:\p\work\pvidot\woodshankr1\0337548\	0366C95-shs-details.dgn	DRAWN - RW	REVISED -		SCALE:	SHEET NO. 1 OF 1 SHEETS	STA.	TO STA.	80	D3 PATCHING 2014-6	GRUNDY	13	4
	PLOT SCALE = 100.0000 1 / in.	CHECKED -	REVISED -		CONTRACT NO. 66C95								
	PLOT DATE = 3/20/2013	DATE -	REVISED -		ILLINOIS FED. AID PROJECT								

SCHEDULE
CLASS A PATCHING

LOCATION		DRIVING LANE											
		CLASS A PATCHES		CLASS B PATCHES	CLASS B PATCHES	DOWEL BARS	PATCH REINF.	PAVEMENT FABRIC	SAW CUTS	TIE BARS	EARTH EXCAVATION	SUB-BASE GRANULAR MATERIAL	GEOTECHNICAL FABRIC FOR GROUND STABILIZATION
MILE POST	DRIVE LANE FOOT	TYPE II 16" SQ YD	TYPE IV 16" SQ YD	TYPE IV 15" SQ YD	EXPANSION JOINT FOOT	EACH	SQ YD	SQ YD	FOOT	EACH	CU YD	TYPE B 12" SQ YD	SQ YD
105.41	20		27	27	12	10	27	72	108	10	9	27	27
105.70	8	11					11	11	72		4	11	11
105.80	20		27				27	27	108		9	27	27
105.85	6	8					8	8	66		3	8	8
105.88	10	13					13	13	78		4	13	13
105.89	10	13					13	13	78		4	13	13
105.90	8	11					11	11	72		4	11	11
105.92	10	13					13	13	78		4	13	13
106.10	8	11					11	11	72		4	11	11
106.20	6	8					8	8	66		3	8	8
106.40	8	11					11	11	72		4	11	11
106.70	35		47				47	47	153	17	16	47	47
108.30	6	8					8	8	66		3	8	8
108.80	8	11					11	11	72		4	11	11
108.83	8	11					11	11	72		4	11	11
109.20	10	13					13	13	78		4	13	13
109.60	8	11					11	11	72		4	11	11
110.10	10	13					13	13	78		4	13	13
110.30	8	11					11	11	72		4	11	11
110.70	40		53				53	53	168	20	18	53	53
TOTALS		177	154	27	12	10	331	376	1701	47	113	331	331

SCHEDULE
PAVEMENT MARKING

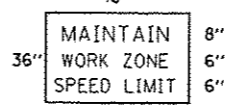
LOCATION		MODIFIED URETHANE PAVEMENT MARKING	MODIFIED URETHANE PAVEMENT MARKING
MILE POST	DRIVE LANE FOOT	LINE 4" FOOT	LINE 6" FOOT
105.40	36	36	40
105.70	8	8	10
105.80	19	20	20
105.85	6	6	10
105.88	11	12	10
105.89	9	10	10
105.90	8	8	10
105.92	10	10	10
106.10	8	8	10
106.20	6	6	10
106.40	8	8	10
106.70	35	35	40
108.30	6	6	10
108.80	7	8	10
108.83	8	8	10
109.20	9	10	10
109.60	7	8	10
110.10	9	10	10
110.30	8	8	10
110.70	40	40	40
TOTALS		265	300



SEE APPROPRIATE STANDARD AND STAGE CONSTRUCTION SHEETS FOR DETAILS OF LANE CLOSURE

START OF LANE CLOSURE TAPER

- ① THE ROAD CONSTRUCTION AHEAD SIGN SHALL BE LOCATED 3 MILES IN ADVANCE OF THE PROJECT LIMITS.
- ② THE MESSAGE AND SIZE OF THE WORK ZONE PUBLIC INFORMATION SIGN SHALL BE AS SPECIFIED BY THE DEPARTMENT.
- ③ TO BE PLACED IN THE MEDIAN WHEN FEASIBLE. THE MESSAGE BOARD SHALL BE USED TO DISPLAY STATUS OF LANES WITHIN THE PROJECT. THE PRIMARY MESSAGES SHALL BE:
 "RIGHT LANE CLOSED" / " x MILES AHEAD"
 "LEFT LANE CLOSED" / " x MILES AHEAD"
 "ALL LANES OPEN"
- ④ THREE, TYPE II BARRICADES, DRUMS, OR VERTICAL BARRICADES AT 50' CENTERS.
- ⑤ THIS SIGN SHALL BE USED WHEN 2 LANES ARE CLOSED.
- ⑥ WHEN THE LEFT LANE IS CLOSED, SWITCH THESE TWO SIGNS AND THE DIRECTION OF THE MERGE ARROW.
- ⑦ 48"x36" FLUORESCENT ORANGE SIGN WITH BLACK LETTERS.



- ↑ ARROW BOARD
- PORTABLE CHANGEABLE MESSAGE SIGN
- ⊥ SIGN
- ⊕ TYPE II BARRICADE, DRUM, OR VERTICAL BARRICADE WITH MONODIRECTIONAL FLASHING LIGHT

GENERAL NOTE:

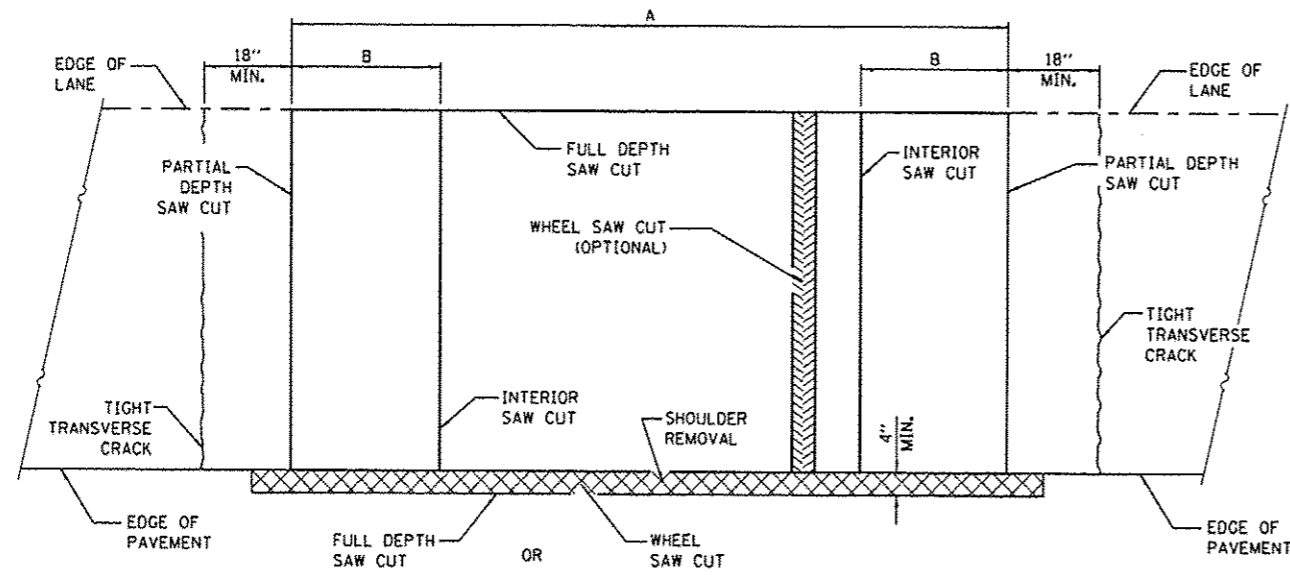
THIS STANDARD IS USED WHERE AT ANY TIME A LANE IS CLOSED ON A FREEWAY/EXPRESSWAY.

WHEN THE LEFT LANE IS CLOSED, LEFT LANE CLOSED SIGNS SHALL BE SUBSTITUTED FOR THE RIGHT LANE CLOSED SIGNS.

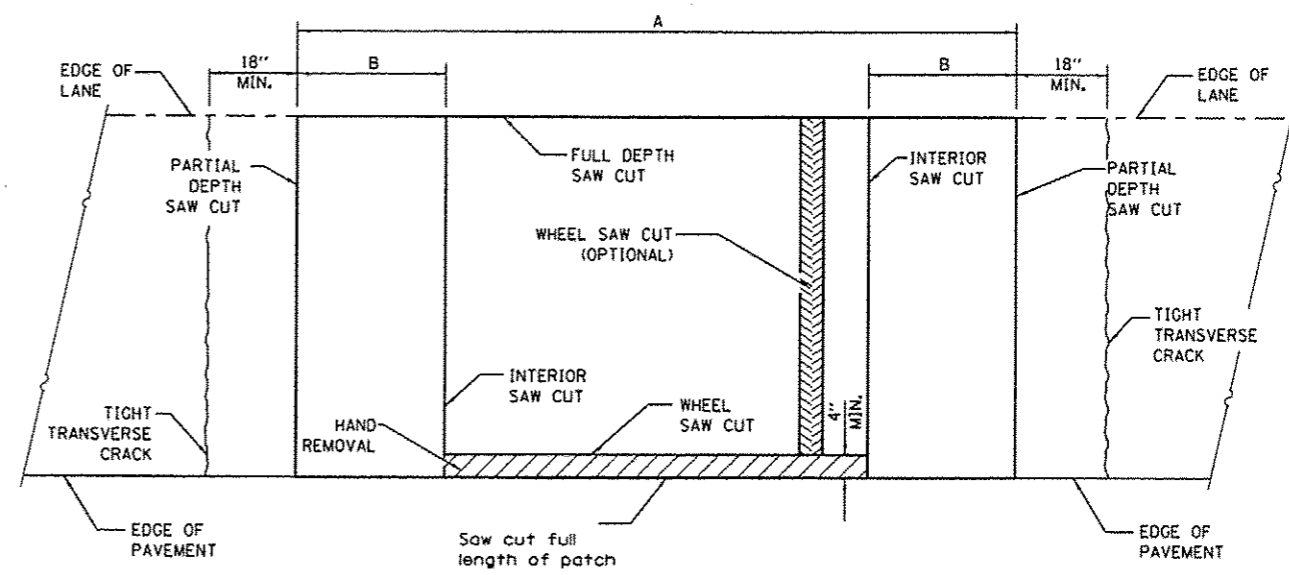
THE FIRST TWO SIGNS AND THE MESSAGE BOARD ARE STATIONARY. THE OTHER SIGNS AND ARROWBOARDS SHALL BE MOVED AS NECESSARY TO MAINTAIN THE REQUIRED DISTANCE FROM THE START OF THE LANE CLOSURE TAPER(S).

SEE SPECIAL PROVISIONS.

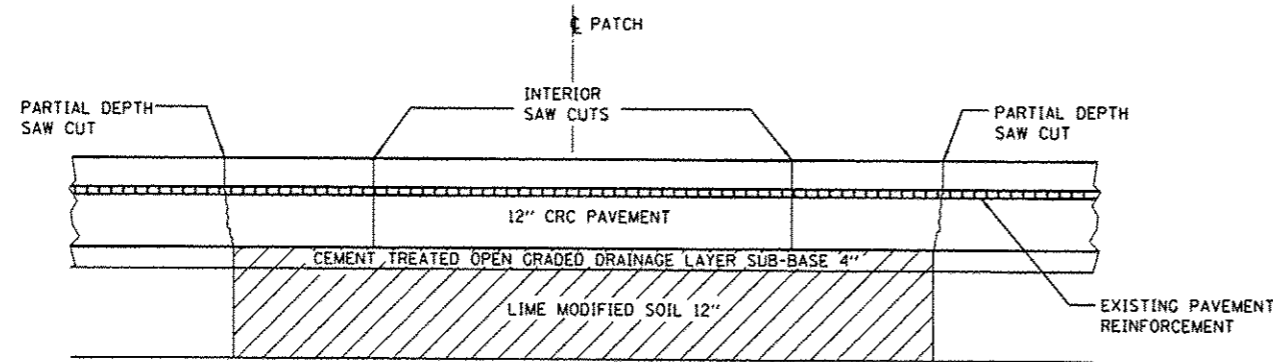
FILE NAME =	USER NAME = woodshankr1	DESIGNED - RW	REVISED -	STATE OF ILLINOIS DEPARTMENT OF TRANSPORTATION	TRAFFIC CONTROL AND PROTECTION STANDARD 701400 (SPECIAL)	F.A.I. RTE.	SECTION	COUNTY	TOTAL SHEETS	SHEET NO.
c:\pwwork\pwwork\woodshankr1\d0337548\366C95-shd-details.dgn	DRAWN - RW	REVISED -	80			03 PATCHING 2014-6	GRUNDY	13	7	
PLOT SCALE = 1/8"=1'-0"	CHECKED -	REVISED -	CONTRACT NO. 66C95							
PLOT DATE = 3/28/2013	DATE -	REVISED -	ILLINOIS FED. AID PROJECT							



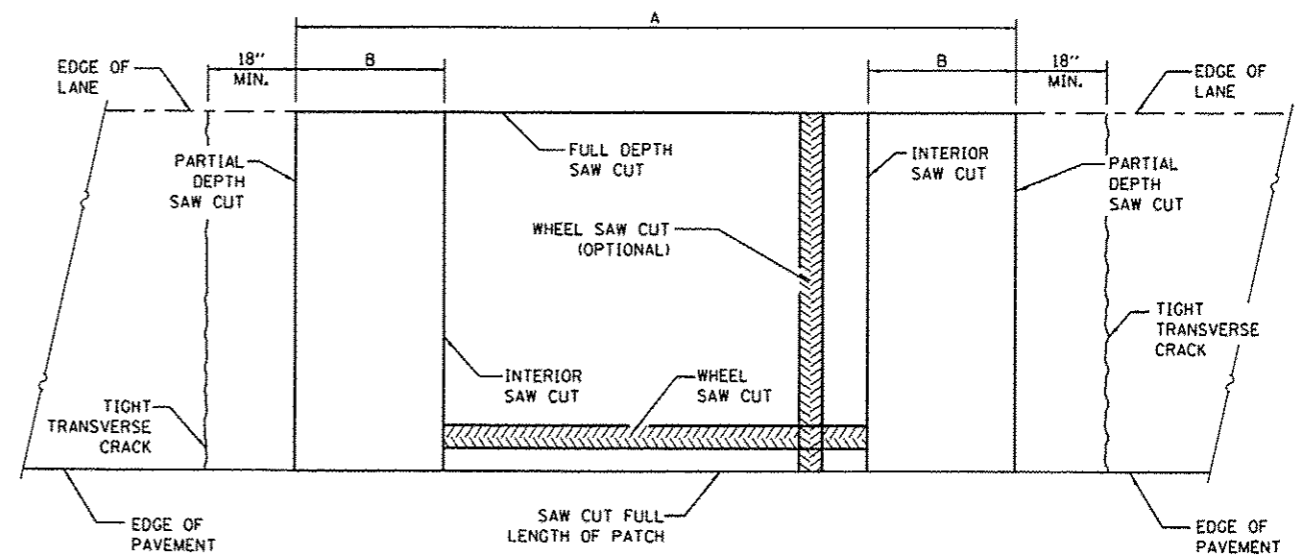
PAVEMENT SAWING DETAIL
(HMA SHOULDER)



PAVEMENT SAWING DETAIL
(PCC SHOULDER)



SAW CUT DETAIL



ALTERNATE SAWING DETAIL
(PCC SHOULDER)

EXCAVATION

EXISTING REINFORCEMENT BARS	A (MIN.)	B (MIN.)	C (MIN.)
#5	6'-0"	18"	16"
#6	6'-0"	21"	19"
#7	6'-0"	24"	22"
FABRIC	6'-0"	21"	18"

GENERAL NOTES

WHEN PATCHING TWO ADJACENT LANES IN ONE OPERATION THE LONGITUDINAL JOINT SHALL BE LONGITUDINAL SAWED JOINT AS DETAILED ON STANDARD 420001, HOWEVER, THE GROOVE MAYBE EITHER PREFORMED OR SAWED.

SEE STANDARD 421001 FOR DETAILS OF PAVEMENT REINFORCEMENT.

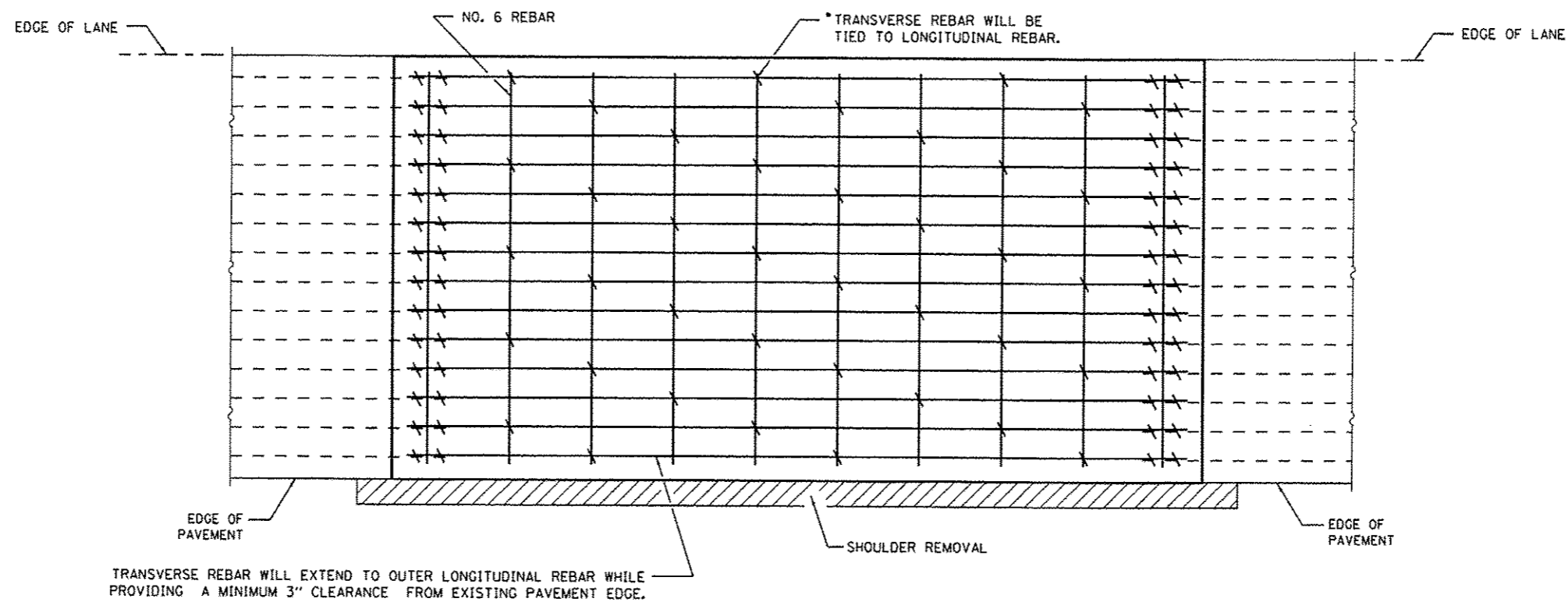
FILE NAME =	USER NAME = woodshankr1	DESIGNED -	REVISED -
ci:\pw\work\p\idat\woodshankr1\08337548\366C95-shr-details.dgn		DRAWN -	REVISED -
	PLOT SCALE = 1/8"=1'-0"	CHECKED -	REVISED -
#MODELNAME#	PLOT DATE = 3/28/2013	DATE -	REVISED -

STATE OF ILLINOIS
DEPARTMENT OF TRANSPORTATION

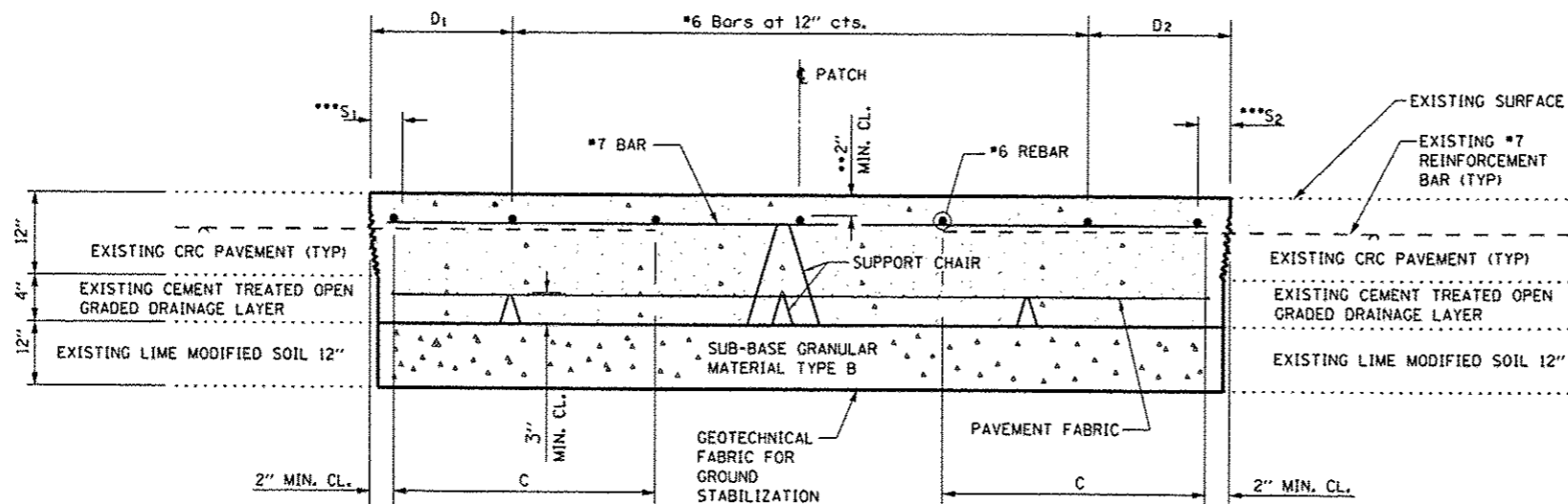
CLASS A PATCHES
SAW CUTTING DETAILS

SCALE: SHEET 1 OF 3 SHEETS STA. TO STA.

F.A.I. RTE.	SECTION	COUNTY	TOTAL SHEETS	SHEET NO.
80	03 PATCHING 2014-6	CRUNDY	13	8
CONTRACT NO. 666093				
[ILLINOIS] FED. AID PROJECT				



PAVEMENT REINFORCEMENT DETAIL



PATCHING DETAIL

- EVERY 3rd INTERSECTION MUST BE TIED.
- ** WHEN THE MINIMUM CLEARANCE CANNOT BE OBTAINED WITH THE TRANSVERSE REBAR ON TOP, THEN THE TRANSVERSE REBAR SHALL BE TIED TO THE BOTTOM OF THE LONGITUDINAL REBAR.
- *** VARIABLES: WHERE S_1 AND S_2 ARE $2\frac{1}{2}$ " MIN. AND 12" MAX. $D_1 = 2(S_1)$ AND $D_2 = 2(S_2)$.

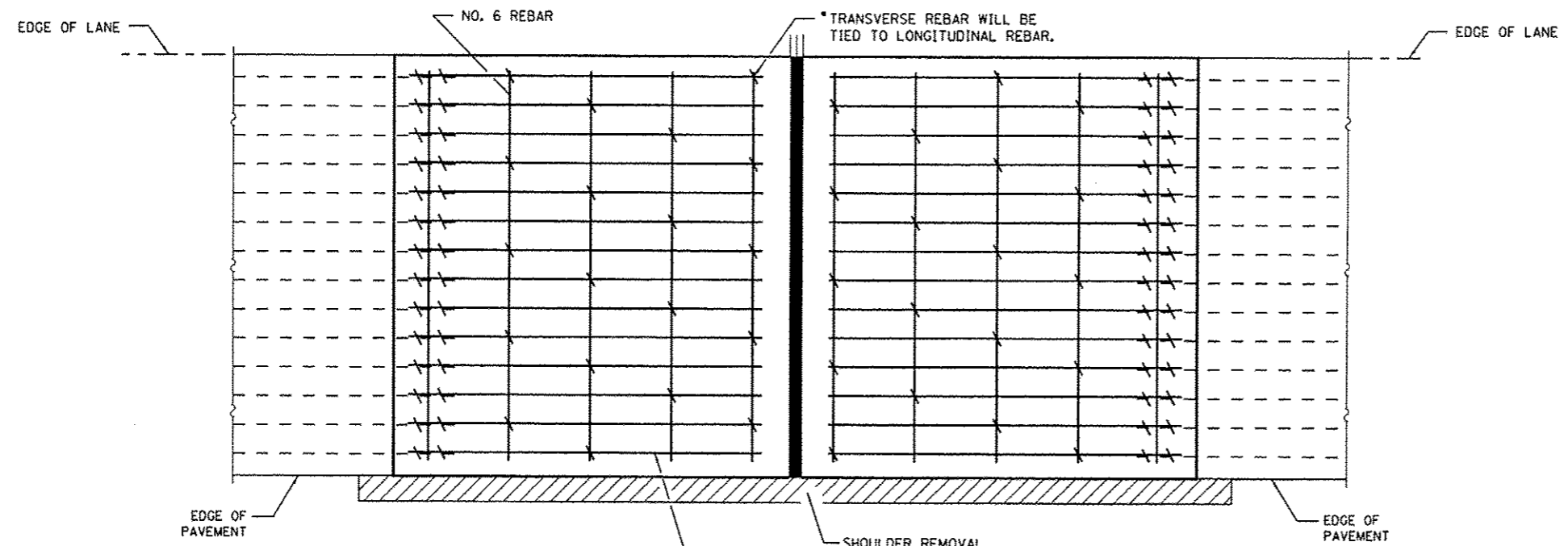
FILE NAME #	USER NAME # woodshankr1	DESIGNED -	REVISED -
ci\pwr\work\pwr\dac\woodshankr1\d0337540\666C95-sh1-details.dgn		DRAWN -	REVISED -
	PLOT SCALE = 100.0000' / in.	CHECKED -	REVISED -
#MODELNAME#	PLOT DATE = 3/28/2013	DATE -	REVISED -

STATE OF ILLINOIS
DEPARTMENT OF TRANSPORTATION

**CLASS A PATCHES
CONSTRUCTION DETAILS**

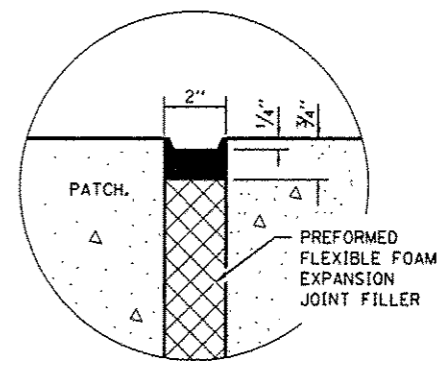
F.A.I. RTE.	SECTION	COUNTY	TOTAL SHEETS	SHEET NO.
80	D3 PATCHING 2014-6	GRUNDY	13	9
CONTRACT NO. 66C95				
ILLINOIS FED. AID PROJECT				

SCALE: SHEET 2 OF 3 SHEETS STA. TO STA.

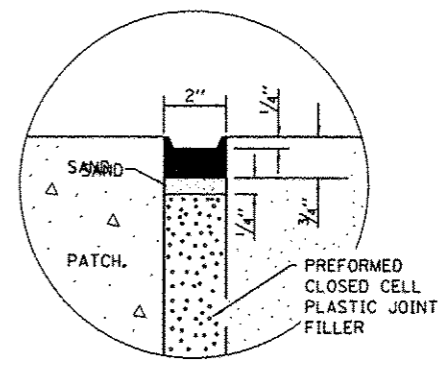


TRANSVERSE REBAR WILL EXTEND TO OUTER LONGITUDINAL REBAR WHILE PROVIDING A MINIMUM 3" CLEARANCE FROM EXISTING PAVEMENT EDGE.

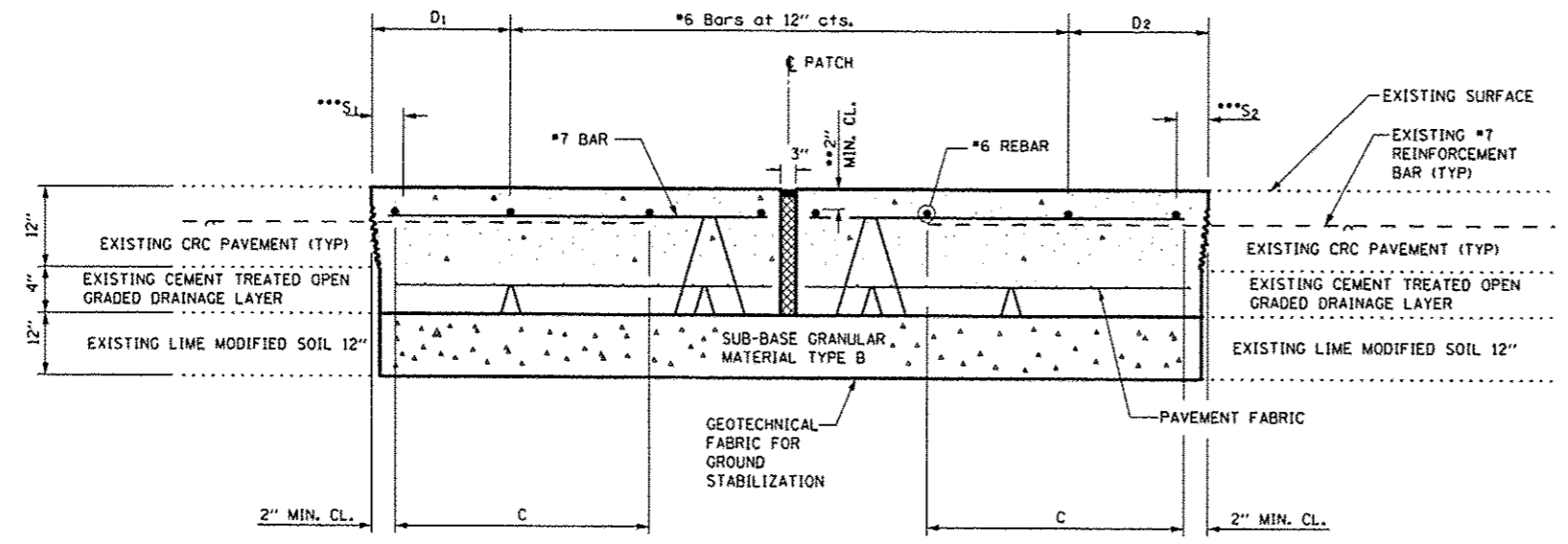
PAVEMENT REINFORCEMENT DETAIL



SEALING DETAIL



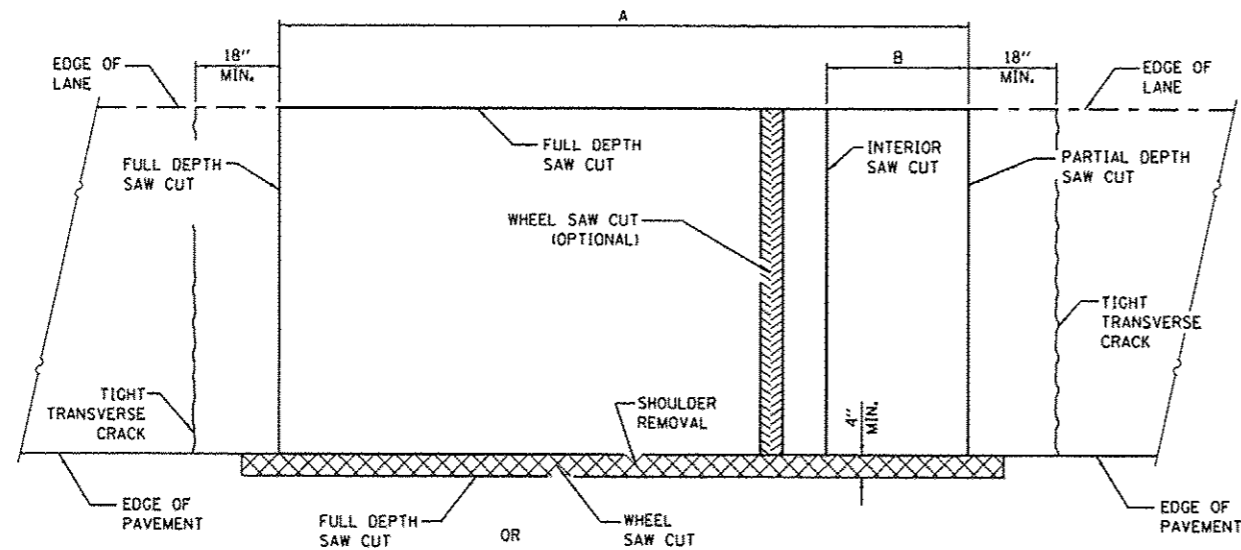
SEALING DETAIL



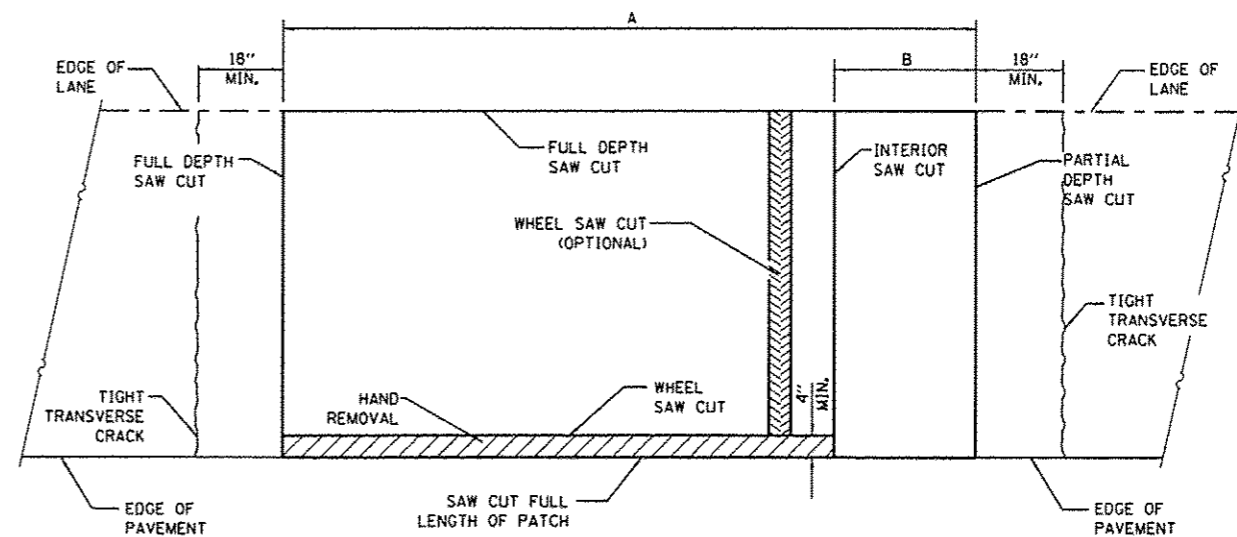
PATCHING DETAIL - EXPANSION

- * EVERY 3rd INTERSECTION MUST BE TIED.
- ** WHEN THE MINIMUM CLEARANCE CANNOT BE OBTAINED WITH THE TRANSVERSE REBAR ON TOP, THEN THE TRANSVERSE REBAR SHALL BE TIED TO THE BOTTOM OF THE LONGITUDINAL REBAR.
- *** VARIABLES: WHERE S_1 AND S_2 ARE $2\frac{1}{2}$ " MIN. AND 12" MAX. $D_1 = 2(S_1)$ AND $D_2 = 2(S_2)$.

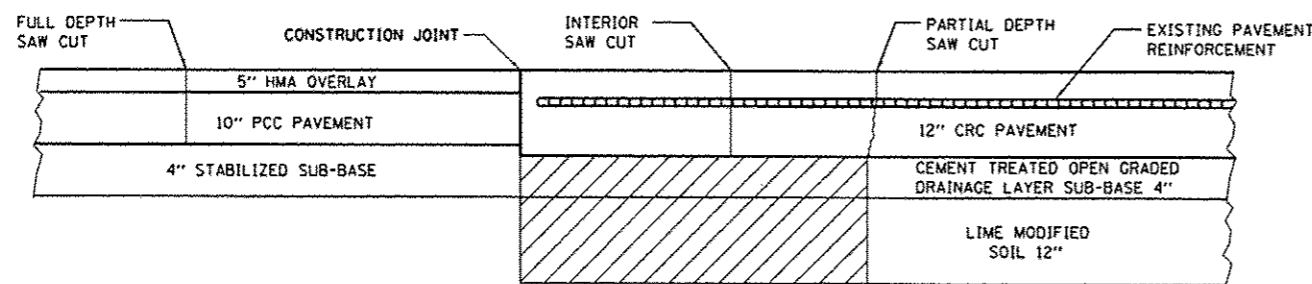
FILE NAME *	USER NAME *	DESIGNED -	REVISED -	STATE OF ILLINOIS DEPARTMENT OF TRANSPORTATION	CLASS A PATCHES CONSTRUCTION DETAILS (EXPANSION)	F.A.I. RITE.	SECTION	COUNTY	TOTAL SHEETS	SHEET NO.	
c:\pwwork\pwwork\woodshankr\03375481	woodshankr1	DRAWN -	REVISED -			80	D3 PATCHING 2014-6	GRUNDY	13	10	
#MODELNAME		CHECKED -	REVISED -			CONTRACT NO. 66C95					
		DATE -	REVISED -			ILLINOIS FED. AID PROJECT					



PAVEMENT SAWING DETAIL
(HMA SHOULDER)

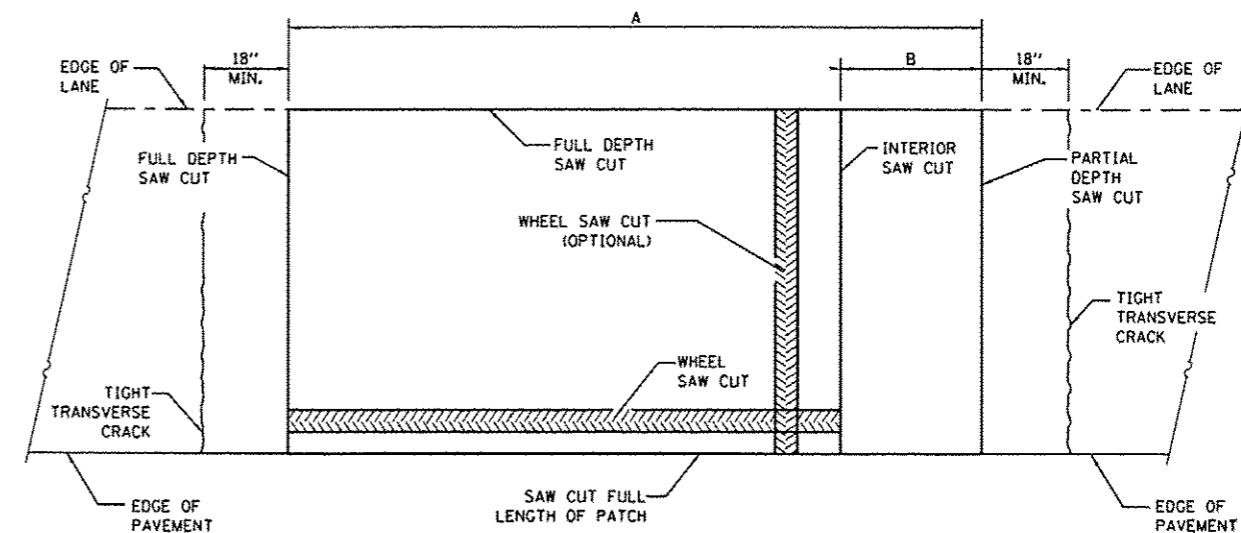


PAVEMENT SAWING DETAIL
(PCC SHOULDER)



SAW CUT DETAIL
M.P. 105.41

 **EARTH EXCAVATION**



ALTERNATE SAWING DETAIL
(PCC SHOULDER)

EXISTING REINFORCEMENT BARS	A (MIN.)	B (MIN.)	C (MIN.)
*5	6'-0"	18"	16"
*6	6'-0"	21"	19"
*7	6'-0"	24"	22"
FABRIC	6'-0"	21"	18"

GENERAL NOTES

WHEN PATCHING TWO ADJACENT LANES IN ONE OPERATION THE LONGITUDINAL JOINT SHALL BE LONGITUDINAL SAWED JOINT AS DETAILED ON STANDARD 420001, HOWEVER, THE GROOVE MAYBE EITHER PREFORMED OR SAWED.

SEE STANDARD 421001 FOR DETAILS OF PAVEMENT REINFORCEMENT.

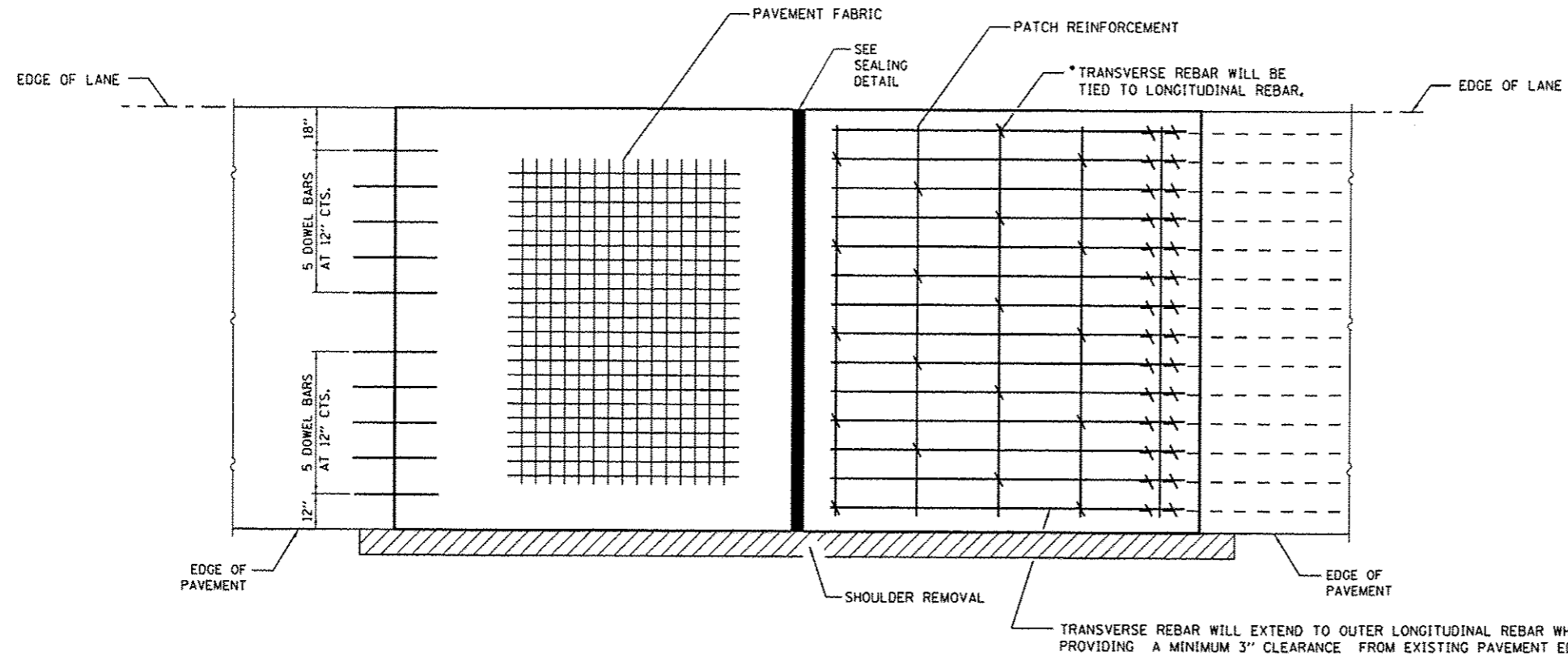
FILE NAME *	USER NAME * woodshankr1	DESIGNED -	REVISED -
c:\p\work\p\dot\woodshankr1\08337948\366C95-shr-detail.dgn		DRAWN -	REVISED -
	PLOT SCALE = 1/4"=1'-0"	CHECKED -	REVISED -
#MODELNAME*	PLOT DATE = 3/28/2013	DATE -	REVISED -

STATE OF ILLINOIS
DEPARTMENT OF TRANSPORTATION

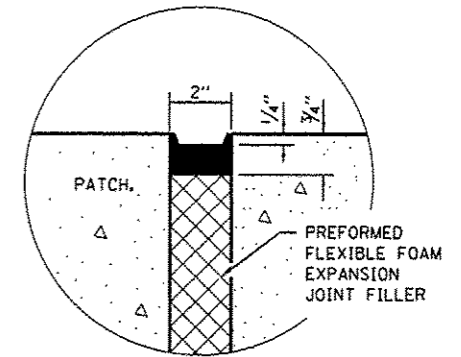
CLASS B PATCH
CONSTRUCTION DETAILS (EXPANSION)

SCALE: SHEET 1 OF 2 SHEETS STA. TO STA.

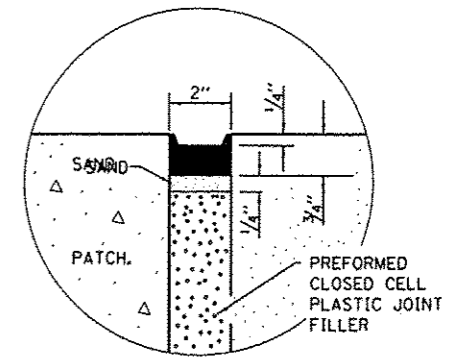
F.A.I. RTE.	SECTION	COUNTY	TOTAL SHEETS	SHEET NO.
80	D3 PATCHING 2014-6	GRUNDY	13	11
CONTRACT NO. 666093			ILLINOIS FED. AID PROJECT	



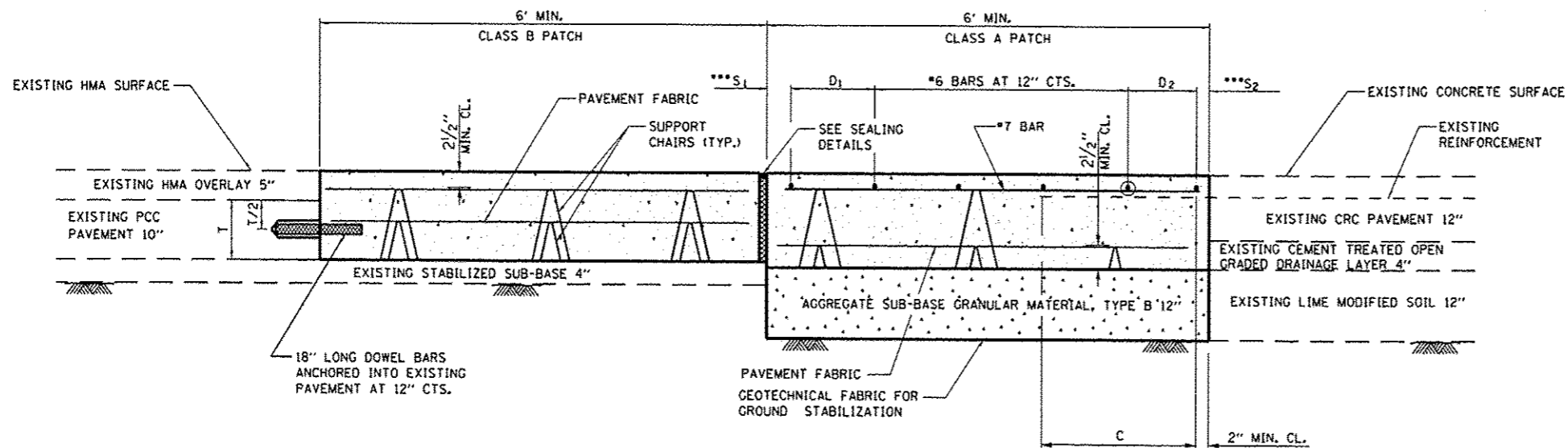
PAVEMENT REINFORCEMENT DETAIL



SEALING DETAIL



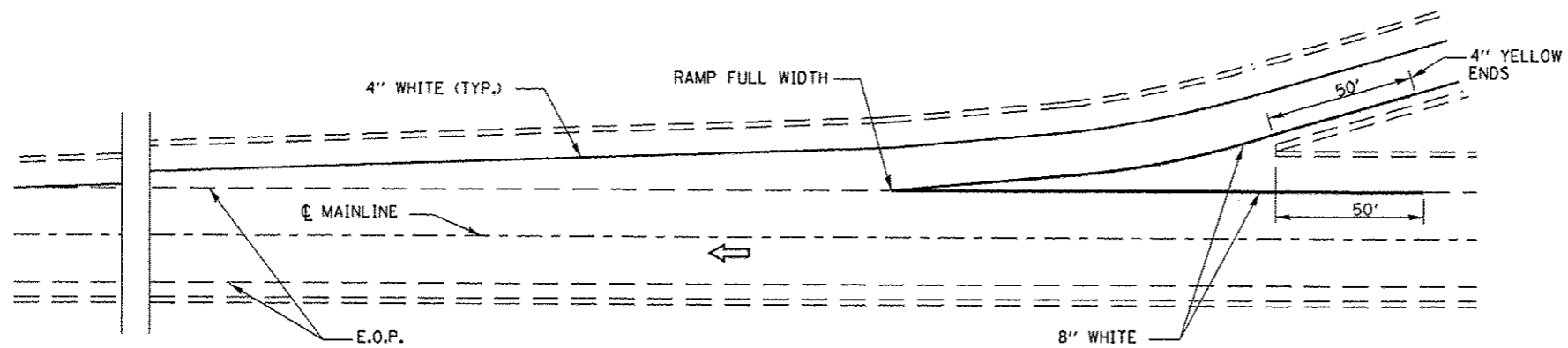
SEALING DETAIL



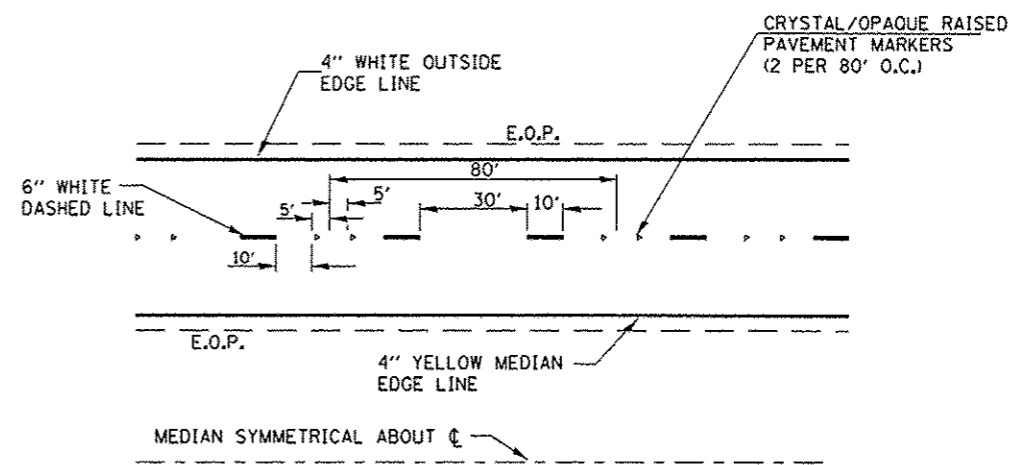
**PATCHING DETAIL - EXPANSION
M.P. 105.41**

- EVERY 3rd INTERSECTION MUST BE TIED.
- ** WHEN THE MINIMUM CLEARANCE CANNOT BE OBTAINED WITH THE TRANSVERSE REBAR ON TOP, THEN THE TRANSVERSE REBAR SHALL BE TIED TO THE BOTTOM OF THE LONGITUDINAL REBAR.
- *** VARIABLES: WHERE S_1 AND S_2 ARE $2\frac{1}{2}$ " MIN. AND 12" MAX. $D_1 = 2(S_1)$ AND $D_2 = 2(S_2)$.

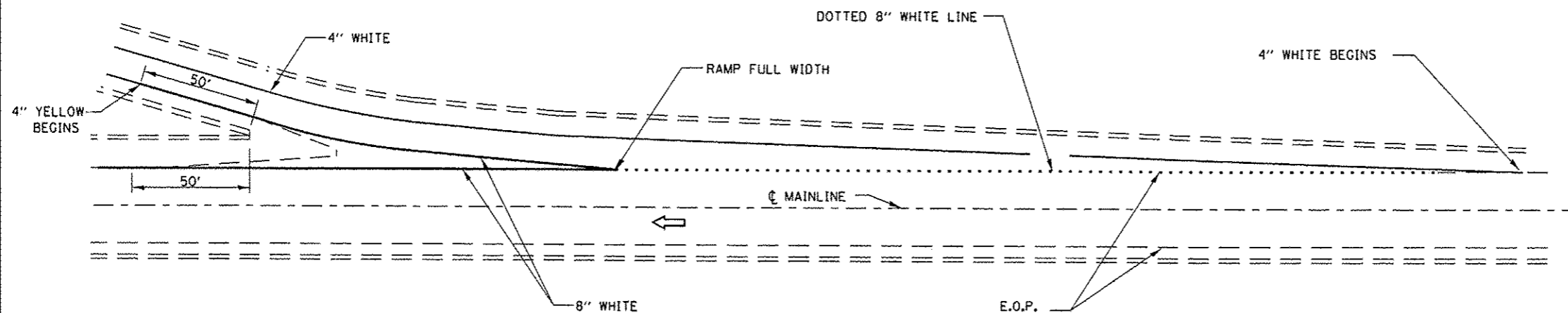
FILE NAME *	USER NAME *	DESIGNED -	REVISED -	STATE OF ILLINOIS DEPARTMENT OF TRANSPORTATION	CLASS B PATCH CONSTRUCTION DETAILS (EXPANSION)	F.A.I. RTE.	SECTION	COUNTY	TOTAL SHEETS	SHEET NO.	
c:\pwr\work\pvidot\woodshankr\1\0337548	0366C15-shk-detailed.dgn	DRAWN -	REVISED -			80	D3 PATCHING 2014-6	GRUNDY	13	12	
MODEL NAME *	PLOT SCALE * 1/8" = 1' / 1/4"	CHECKED -	REVISED -			SCALE: SHEET 2 OF 2 SHEETS STA. TO STA.		CONTRACT NO. 66C95		ILLINOIS FED. AID PROJECT	
	PLOT DATE * 3/20/2013	DATE -	REVISED -								



TYPICAL PAVEMENT MARKING FOR ENTRANCE RAMP TERMINALS



TYPICAL PAVEMENT MARKINGS



TYPICAL PAVEMENT MARKINGS FOR EXIT RAMP TERMINALS

FILE NAME *	USER NAME * woodshankr1	DESIGNED - RON WOODSHANK	REVISED -	STATE OF ILLINOIS DEPARTMENT OF TRANSPORTATION	TYPICAL PAVEMENT MARKING		F.A.I. RTE.	SECTION	COUNTY	TOTAL SHEETS	SHEET NO.	
c:\p\work\p\idot\woodshankr1\48337548\	266C95-shr-details.dgn	DRAWN - RON WOODSHANK	REVISED -		SCALE:	SHEET NO. 1 OF 1 SHEETS	STA.	80	03 PATCHING 2014-6	GRUNDY	13	13
	PLOT SCALE * 1/8" = 1' / in.	CHECKED -	REVISED -									
	PLOT DATE * 3/29/2013	DATE -	REVISED -									
							CONTRACT NO. 66C95		[ILLINOIS] FED. AID PROJECT			