

INDEX OF SHEETS

1. COVER SHEET
2. GENERAL NOTES
3. SUMMARY OF QUANTITIES
4. TYPICAL SECTIONS
5. TRAFFIC CONTROL AND PROTECTION, STANDARD 701400 (SPECIAL)
6. MAINLINE SCHEDULE

STANDARDS

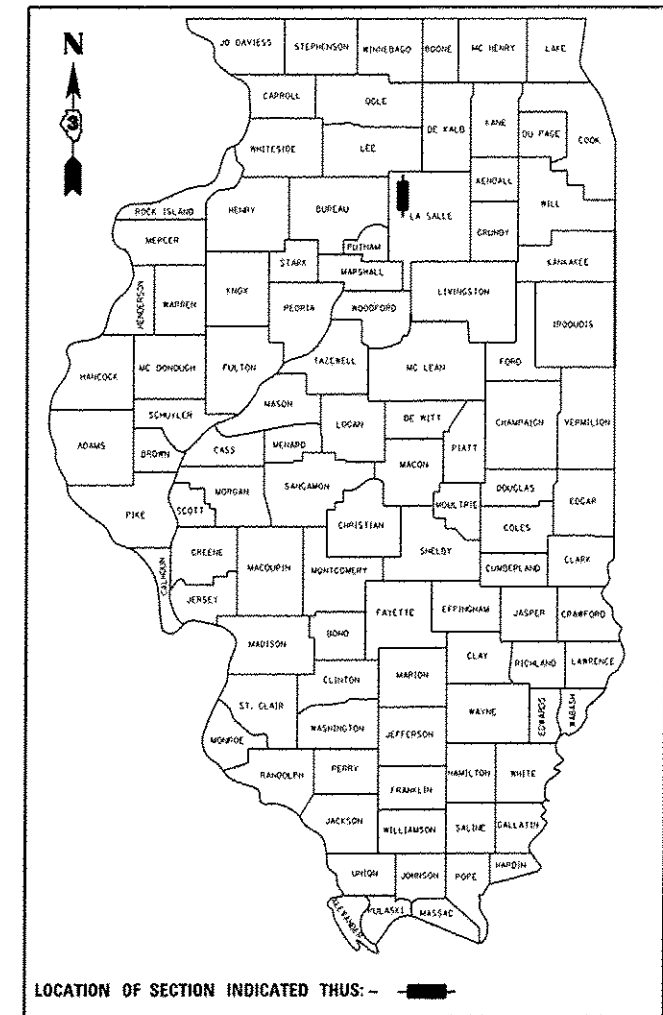
- | | |
|-----------|-------------------------------------------------------------------------------|
| 000001-06 | STANDARD SYMBOLS, ABBREVIATIONS AND PATTERNS |
| 001006 | DECIMAL OF AN INCH AND OF A FOOT |
| 642001-02 | SHOULDER RUMBLE STRIPS, 16 INCH |
| 701101-03 | OFF-ROAD OPERATIONS MULTILANE, 15' (4.5 m) TO 24' (600 mm) FROM PAVEMENT EDGE |
| 701106-02 | OFF-ROAD OPERATIONS, MULTILANE, MORE THAN 15' (4.5 m) AWAY |
| 701400-06 | APPROACH TO LANE CLOSURE, FREEWAY/EXPRESSWAY |
| 701401-07 | LANE CLOSURE, FREEWAY/EXPRESSWAY |
| 701411-08 | LANE CLOSURE, MULTILANE, AT ENTRANCE OR EXIT RAMP FOR SPEEDS **6" 45 MPH |
| 701901-02 | TRAFFIC CONTROL DEVICES |

STATE OF ILLINOIS
DEPARTMENT OF TRANSPORTATION
DIVISION OF HIGHWAYS
**PROPOSED
HIGHWAY PLANS**

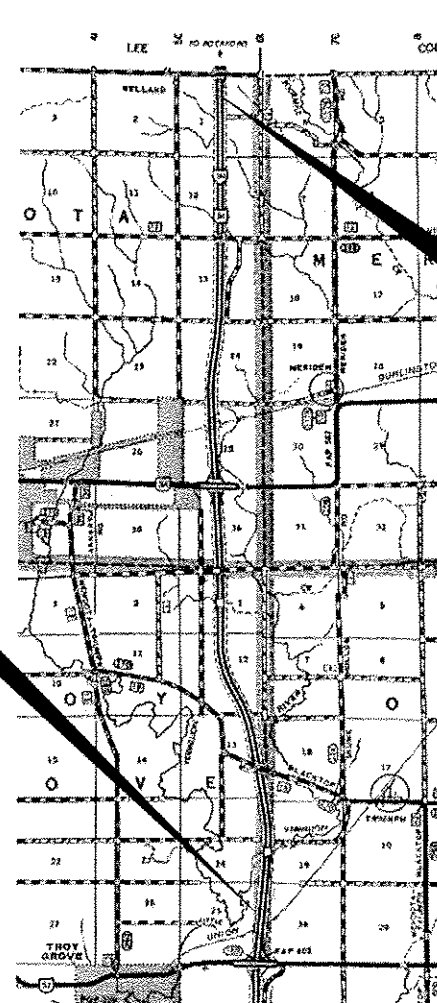
F.A.I. ROUTE 39 (I-39)
SECTION (50-7 & 50-8)I
PROJECT: *HSIP-0039(034)*
**HOT-MIX ASPHALT SHOULDER REPAIR
LASALLE COUNTY**

F.A.I. RTE.	SECTION	COUNTY	TOTAL SHEETS	SHEET NO.
39	(50-7 & 50-8)I	LASALLE	6	1
ILLINOIS			CONTRACT NO. 66C98	

D-93-043-13

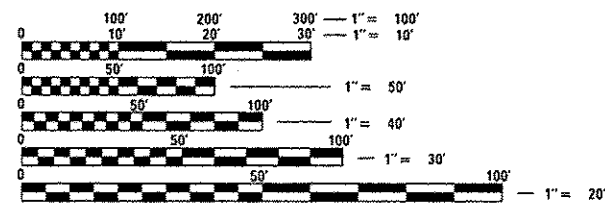


C-93-096-13



BEGIN PROJECT
STA. 965 + 71.34 SOUTH OF
LEE COUNTY LINE

BEGIN PROJECT
STA. 1456 + 95.71 NORTH
OF RAILROAD BRIDGE



FULL SIZE PLANS HAVE BEEN PREPARED USING STANDARD ENGINEERING SCALES. REDUCED SIZED PLANS WILL NOT CONFORM TO STANDARD SCALES. IN MAKING MEASUREMENTS ON REDUCED PLANS, THE ABOVE SCALES MAY BE USED.

J.U.L.I.E.
JOINT UTILITY LOCATION INFORMATION FOR EXCAVATION
1-800-892-0123
OR 811

DISTRICT 3 NO. (815) 434-6131
PROJECT ENGINEER: JOE KANNEL, P.E.
UNIT CHIEF: SCOTT A. FERGUSON

CONTRACT NO. 66C98

GROSS LENGTH = 50795.54 FT. = 9.6 MILES
NET LENGTH = 50795.54 FT. = 9.6 MILES

LOCATION MAP
NOT TO SCALE

FUNCTIONAL CLASSIFICATION
RURAL INTERSTATE
2012 ADT = 18000
P.V. = 60.00% M.U. = 33.33% S.U. = 6.67%

STATE OF ILLINOIS
DEPARTMENT OF TRANSPORTATION
DIVISION OF HIGHWAYS

SUBMITTED *3-29-13*
Paul G. Loebner
DEPUTY DIRECTOR OF HIGHWAYS, REGION ENGINEER

May 10 2013
John D. Baranowski, PE, Inc.
ENGINEER OF DESIGN AND ENVIRONMENT

May 10 2013
Omer Osman, PE, Inc.
DIRECTOR OF HIGHWAYS, CHIEF ENGINEER

**PRINTED BY THE AUTHORITY
OF THE STATE OF ILLINOIS**