

1. COVER SHEET
2. GENERAL NOTES
3. SUMMARY OF QUANTITIES
4. TYPICAL SECTIONS
5. TRAFFIC CONTROL AND PROTECTION, STANDARD 701400 (SPECIAL)
6. MAINLINE SCHEDULE

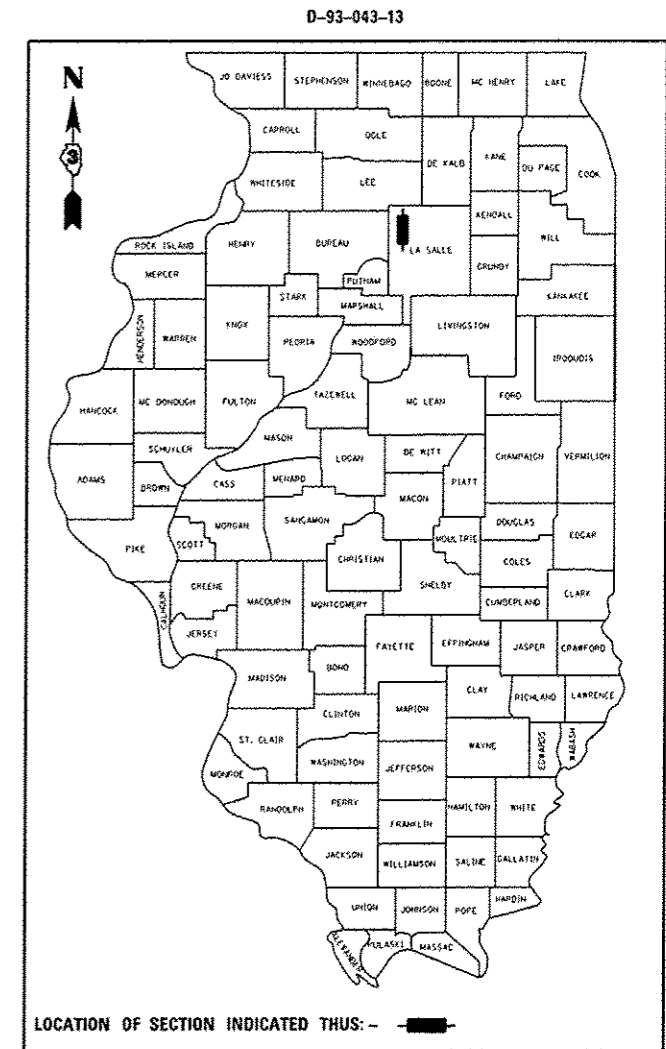
STANDARDS

000001-06	STANDARD SYMBOLS, ABBREVIATIONS AND PATTERNS
001006	DECIMAL OF AN INCH AND OF A FOOT
642001-02	SHOULDER RUMBLE STRIPS, 16 INCH
701101-03	OFF-ROAD OPERATIONS MULTILANE, 15' (4.5 m) TO 24' (600 mm) FROM PAVEMENT EDGE
701106-02	OFF-ROAD OPERATIONS, MULTILANE, MORE THAN 15' (4.5 m) AWAY
701400-06	APPROACH TO LANE CLOSURE, FREEWAY/EXPRESSWAY
701401-07	LANE CLOSURE, FREEWAY/EXPRESSWAY
701411-08	LANE CLOSURE, MULTILANE, AT ENTRANCE OR EXIT RAMP FOR SPEEDS **6" 45 MPH
701901-02	TRAFFIC CONTROL DEVICES

STATE OF ILLINOIS
DEPARTMENT OF TRANSPORTATION
DIVISION OF HIGHWAYS
PROPOSED
HIGHWAY PLANS

F.A.I. ROUTE 39 (I-39)
SECTION (50-7 & 50-8)I
PROJECT: HSIP-0039(034)
HOT-MIX ASPHALT SHOULDER REPAIR
LASALLE COUNTY

F.A.I. RTE.	SECTION	COUNTY	TOTAL SHEETS	SHEET NO.
39	(50-7 & 50-8)I	LASALLE	6	1
ILLINOIS			CONTRACT NO. 66C98	

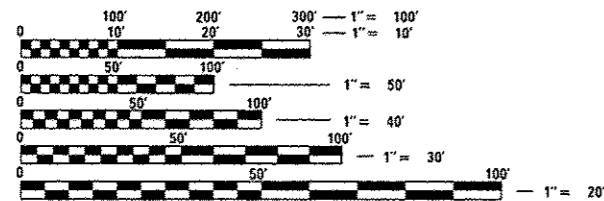


C-93-096-13



BEGIN PROJECT
 STA. 965 + 71.34 SOUTH OF
 LEE COUNTY LINE

BEGIN PROJECT
 STA. 1456 + 95.71 NORTH
 OF RAILROAD BRIDGE



FULL SIZE PLANS HAVE BEEN PREPARED USING STANDARD ENGINEERING SCALES. REDUCED SIZED PLANS WILL NOT CONFORM TO STANDARD SCALES. IN MAKING MEASUREMENTS ON REDUCED PLANS, THE ABOVE SCALES MAY BE USED.

J.U.L.I.E.
 JOINT UTILITY LOCATION INFORMATION FOR EXCAVATION
 1-800-892-0123
 OR 811

DISTRICT 3 NO. (815) 434-6131
 PROJECT ENGINEER: JOE KANNEL, P.E.
 UNIT CHIEF: SCOTT A. FERGUSON

CONTRACT NO. 66C98

GROSS LENGTH = 50795.54 FT. = 9.6 MILES
 NET LENGTH = 50795.54 FT. = 9.6 MILES

LOCATION MAP
 NOT TO SCALE

FUNCTIONAL CLASSIFICATION
RURAL INTERSTATE
 2012 ADT = 18000
 P.V. = 60.00% M.U. = 33.33% S.U. = 6.67%

STATE OF ILLINOIS
 DEPARTMENT OF TRANSPORTATION
 DIVISION OF HIGHWAYS

SUBMITTED 3-29-13
Paul G. Loebner
 DEPUTY DIRECTOR OF HIGHWAYS, REGION ENGINEER

May 10 2013
John D. Baranowski, PE, Inc.
 acting ENGINEER OF DESIGN AND ENVIRONMENT

May 10 2013
Omer Osman, PE, Inc.
 DIRECTOR OF HIGHWAYS, CHIEF ENGINEER

PRINTED BY THE AUTHORITY
OF THE STATE OF ILLINOIS

GENERAL NOTES

PLAN DIMENSIONS RELATIVE TO THE EXISTING ROADWAY HAVE BEEN TAKEN FROM EXISTING PLANS AND ARE SUBJECT TO NOMINAL CONSTRUCTION VARIATIONS. IT SHALL BE THE CONTRACTOR'S RESPONSIBILITY TO MAKE NECESSARY ADJUSTMENTS PRIOR TO CONSTRUCTION OR ORDERING OF MATERIALS. SUCH VARIATIONS SHALL NOT BE CAUSE FOR ADDITIONAL COMPENSATION FOR A CHANGE IN THE SCOPE OF THE WORK. HOWEVER, THE CONTRACTOR WILL BE PAID FOR THE QUANTITY FURNISHED AT THE UNIT PRICE BID FOR THE WORK.

ANY REFERENCE TO A STANDARD IN THESE PLANS SHALL BE INTERPRETED TO MEAN THE EDITION AS INDICATED BY THE SUBNUMBER SHOWN IN THE LIST OF STANDARDS OR THE COPY INCLUDED IN THESE PLANS.

THE CONTRACTOR SHALL CONTACT JULIE AT LEAST 48 HOURS PRIOR TO EXCAVATION TO DETERMINE WHICH UTILITIES ARE IN THE AREA.

HMA RESURFACING	112	LBS / SQ YD / IN
-----------------	-----	------------------

BITUMINOUS MATERIALS (PRIME COAT) RATES	
TYPE OF SURFACE TO BE PRIMED	RESIDUAL ASPHALT RATE LB/SQ FT (KG/SQ M)
MILLED HMA, AGED NON-MILLED HMA, MILLED CONCRETE, NON-MILLED CONCRETE & FINED CONCRETE	0.05
FOG COAT BETWEEN HMA LIFTS, IL-4.75 & BRICK	0.025

COMMITMENTS

DISPOSAL OF EXCAVATED MATERIALS. ALL SUITABLE OR UNSUITABLE MATERIALS EXCAVATED DUE TO CONSTRUCTION OPERATIONS SHALL BE DISPOSED OF WITHIN THE LIMITS OF EXISTING RIGHT OF WAY. DISPOSAL OF EXCAVATED MATERIALS OFF THE RIGHT OF WAY SHALL NOT BE PERMITTED.

EXCAVATED MATERIALS SHALL BE DISPOSED OF AT LOCATIONS DIRECTED BY THE ENGINEER. ANY SUCH DISPOSAL SHALL NOT CREATE AND UNSIGHTLY OR OBJECTIONABLE APPEARANCE OR DETRACT FROM THE NATURAL TOPOGRAPHIC FEATURES WITHOUT WRITTEN PERMISSION FROM THE ENGINEER.

DATE: 3-29-13

PREPARED BY: Don Beaulieu
DISTRICT STUDIES & PLANS ENGINEER

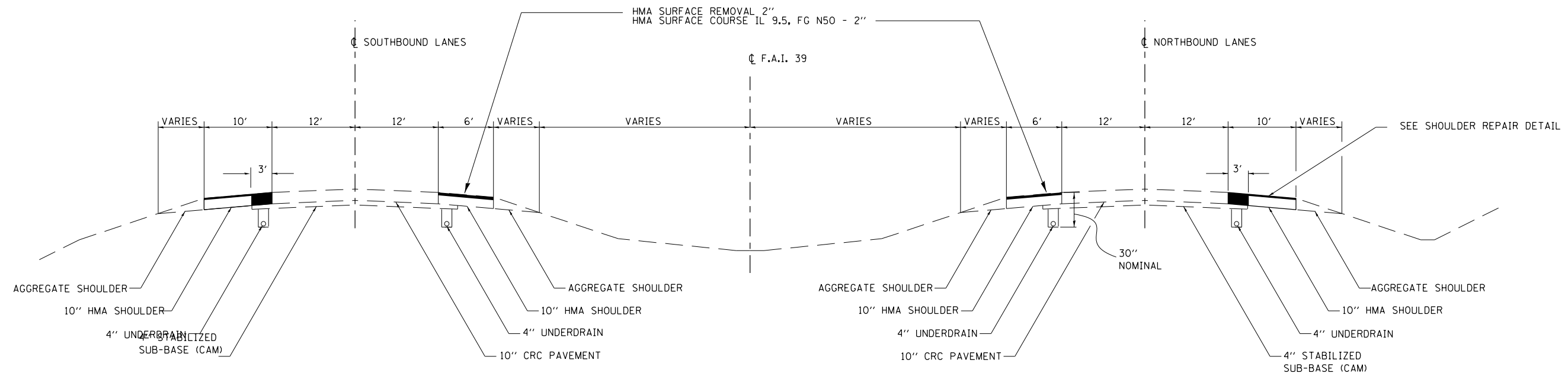
EXAMINED BY: Hubert J. J. J.
DISTRICT CONSTRUCTION ENGINEER

Wayne Phillips
DISTRICT MATERIALS ENGINEER

Bruce A. Hacker
DISTRICT OPERATIONS ENGINEER

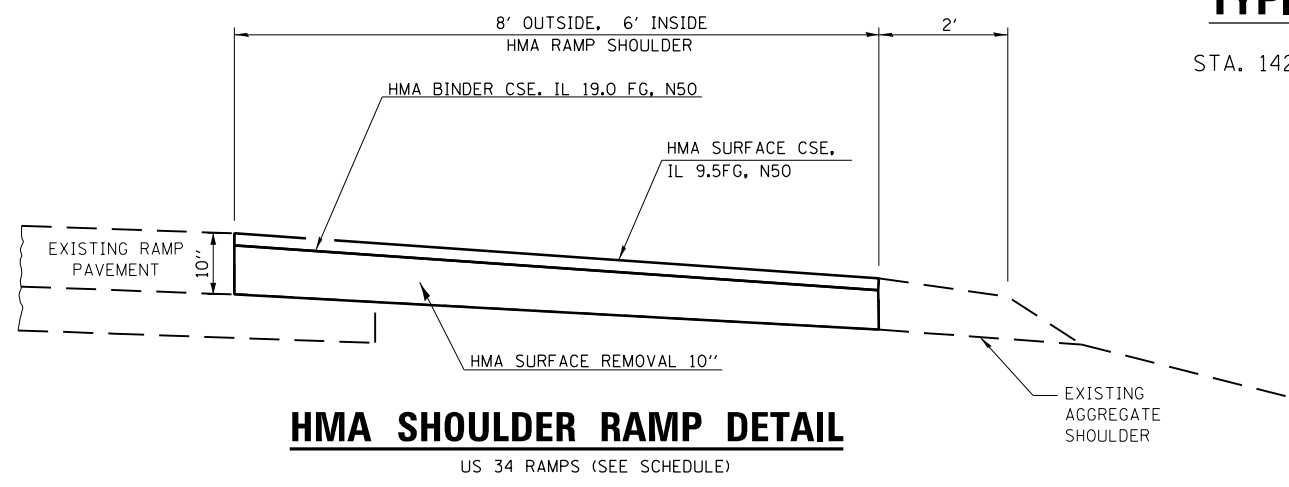
FILE NAME =	USER NAME = ferguson	DESIGNED - OBS	REVISED -	STATE OF ILLINOIS DEPARTMENT OF TRANSPORTATION	GENERAL NOTES	F.A.I. RTE.	SECTION	COUNTY	TOTAL SHEETS	SHEET NO.	
c:\pwwork\midot\ferguson\0333082\0	66C98-shr-details.dgn	DRAWN - OBS	REVISED -			39	(50-7 & 50-8)	LASALLE	6	2	
	PLOT SCALE = 1/8" = 1'	CHECKED -	REVISED -			SCALE: SHEET 1 OF 1 SHEETS STA. TO STA.		ILLINOIS FED. AID PROJECT			
	PLOT DATE = 3/29/2013	DATE - FEBRUARY 2013	REVISED -			CONTRACT NO. 66C98					

CODE NO.	ITEM	UNIT	CONSTR. CODE	
			FED / STATE	90% / 10%
			ROADWAY	
			0021	
			RURAL	
44000157	HOT-MIX ASPHALT SURFACE REMOVAL, 2"	SQ YD		67727.4
44000158	HOT-MIX ASPHALT SURFACE REMOVAL, 2 1/4"	SQ YD		111092.6
44000181	HOT-MIX ASPHALT SURFACE REMOVAL, 7 3/4"	SQ YD		33327.6
44000189	HOT-MIX ASPHALT SURFACE REMOVAL, 10"	SQ YD		7111.2
40603082	HOT-MIX ASPHALT BINDER COURSE, IL-19.0, FG, N50	TON		17550.24
64200116	SHOULDER RUMBLE STRIPS, 16 INCH	FOOT		215982.2
67100100	MOBILIZATION	L SUM		1
70100420	TRAFFIC CONTROL AND PROTECTION, STANDARD 701411	EACH		4
X4060110	BITUMINOUS MATERIALS (PRIME COAT), SPECIAL	POUND		9385.6
40603415	HOT-MIX ASPHALT SURFACE COURSE, IL-9.5, FG, N50	TON		22479
X7010805	TRAFFIC CONTROL AND PROTECTION, STANDARD 701401 (SPECIAL)	L SUM		1



TYPICAL SECTION

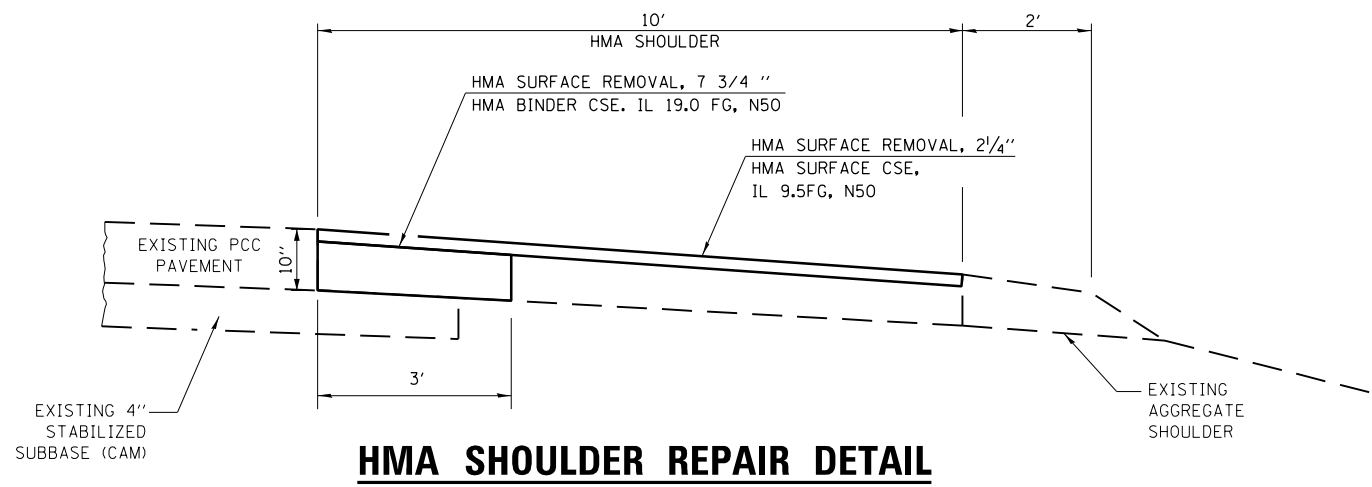
STA. 1428+00 TO STA 965+71.34



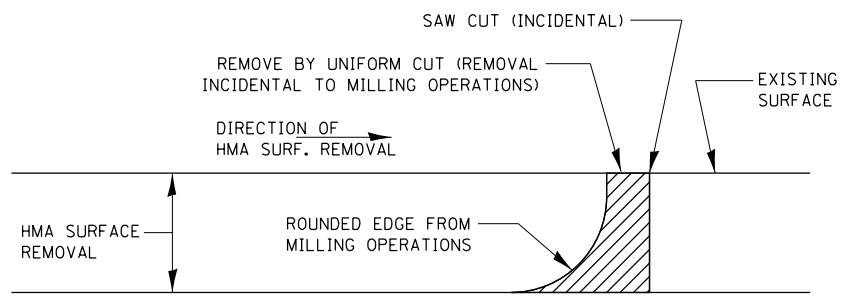
HMA SHOULDER RAMP DETAIL

US 34 RAMPS (SEE SCHEDULE)

	HMA BINDER FOR SHOULDERS	HMA SURFACE FOR SHOULDERS
	BOTTOM LIFTS	TOP LIFTS
PG GRADE	PG64-22	PG64-22
DESIGN AIR VOIDS	4.0% @ N50	4.0% @ N50
MIXTURE COMPOSITION	IL 19.0 FG	IL 9.5 FG
FRICTION AGGREGATE		MIXTURE C
DENSITY CONTROL METHOD	CORES	CORES/ CORRELATION



HMA SHOULDER REPAIR DETAIL



NOTE:
WHEN MILLING OPERATIONS PRODUCE A ROUNDED EDGE, THEN A SAW CUT SHALL BE USED TO MANUFACTURE A PERPENDICULAR EDGE AS SHOWN IN THE DETAIL. THE ENGINEER SHALL BE THE SOLE JUDGE CONCERNING THE USE OF THIS DETAIL

HMA DETAIL AT BUTT JOINTS

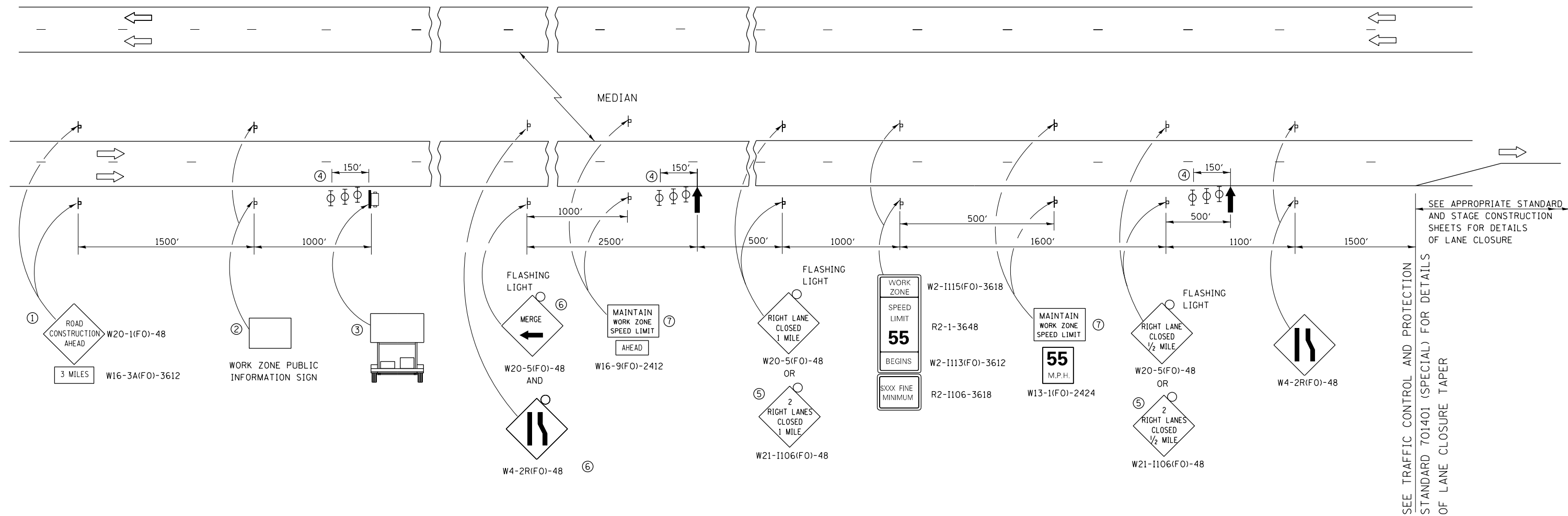
FILE NAME =	USER NAME = fergusonso	DESIGNED - DBS	REVISED - _____
ca:\pwork\pwork\fergusonso\d0333082\066c83-sht-detail.dgn		DRAWN - DBS	REVISED - _____
	PLOT SCALE = 100.0000' / 1in.	CHECKED - _____	REVISED - _____
	PLOT DATE = 3/29/2013	DATE - FEBRUARY 2013	REVISED - _____

STATE OF ILLINOIS
DEPARTMENT OF TRANSPORTATION

TYPICAL SECTIONS

SCALE: SHEET 1 OF 1 SHEETS STA. TO STA.

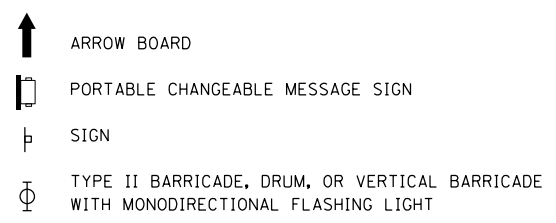
F.A.I. RTE.	SECTION	COUNTY	TOTAL SHEETS	SHEET NO.
39	(50-7 & 50-8)I	LASALLE	6	4
CONTRACT NO. 66C98			ILLINOIS FED. AID PROJECT	



SEE APPROPRIATE STANDARD AND STAGE CONSTRUCTION SHEETS FOR DETAILS OF LANE CLOSURE

SEE TRAFFIC CONTROL AND PROTECTION STANDARD 701401 (SPECIAL) FOR DETAILS OF LANE CLOSURE TAPER

- ① THE ROAD CONSTRUCTION AHEAD SIGN SHALL BE LOCATED 3 MILES IN ADVANCE OF THE PROJECT LIMITS.
- ② THE MESSAGE AND SIZE OF THE WORK ZONE PUBLIC INFORMATION SIGN SHALL BE AS SPECIFIED BY THE DEPARTMENT.
- ③ TO BE PLACED IN THE MEDIAN WHEN FEASIBLE. THE MESSAGE BOARD SHALL BE USED TO DISPLAY STATUS OF LANES WITHIN THE PROJECT. THE PRIMARY MESSAGES SHALL BE:
 "RIGHT LANE CLOSED" / " x MILES AHEAD"
 "LEFT LANE CLOSED" / " x MILES AHEAD"
 "ALL LANES OPEN"
- ④ THREE, TYPE II BARRICADES, DRUMS, OR VERTICAL BARRICADES AT 50' CENTERS.
- ⑤ THIS SIGN SHALL BE USED WHEN 2 LANES ARE CLOSED.
- ⑥ WHEN THE LEFT LANE IS CLOSED, SWITCH THESE TWO SIGNS AND THE DIRECTION OF THE MERGE ARROW.
- ⑦ 48"x36" FLUORESCENT ORANGE SIGN WITH BLACK LETTERS.
 48"
 36" MAINTAIN WORK ZONE SPEED LIMIT 8" 6" 6"



GENERAL NOTE:

THIS STANDARD IS USED WHERE AT ANY TIME A LANE IS CLOSED ON A FREEWAY/EXPRESSWAY.

WHEN THE LEFT LANE IS CLOSED, LEFT LANE CLOSED SIGNS SHALL BE SUBSTITUTED FOR THE RIGHT LANE CLOSED SIGNS.

THE FIRST TWO SIGNS AND THE MESSAGE BOARD ARE STATIONARY. THE OTHER SIGNS AND ARROWBOARDS SHALL BE MOVED AS NECESSARY TO MAINTAIN THE REQUIRED DISTANCE FROM THE START OF THE LANE CLOSURE TAPER(S).

WHEN WORK OPERATIONS ARE NEAR MAJOR INTERCHANGES THE CONTRACTOR SHALL FURNISH ADDITIONAL MESSAGE BOARDS AND UTILIZED AT THE DIRECTION OF THE ENGINEER.

MAINLINE TABLE

				HMA BINDER CSE. IL 19.0 FG N50	HMA SURF. CSE. IL 9.5 FG N50	HMA SURF. REM. 2 1/4"	HMA SURF. REM. 7 3/4"	SHLDR RUMBLE STRIPS 16"	BIT PRIME COAT	HMA SURF. REM. 2"
PROJECT STARTS 1456+95.71	I-39 NORTHBOUND	LENGTH	LENGTH	TON	TON	SQ YD	SQ YD	FOOT	LBS	SQ YD
	STA EQUATION 1456+95.71 BK = 457+75.80 AH									
	STA 457+75.80 TO STA 472+79.34	1503.54	1503.54	217.5	322.8	1670.6	501.2	3007.08	133.6	1002.4
	STA 476+91.09 OVER VERMILLION SN 050-0169 & 0170									
OMISSION DL SHLDR ONLY	STA 472+79.34 TO STA 480+83.34	804			60			1608	71.5	536
	STA 480+83.34 TO STA 531+00	5016.66	5016.66	725.7	1076.9	5574.1	1672.2	10033.32	445.9	3344.4
	STA 531+00 CH 19 OVERHEAD									
	STA 531+00 TO STA 663+00	13200	13200	1909.6	2833.6	14666.7	4400	26400	1173.3	8800
	STA 663+00 N 42ND RD OVERHEAD									
	STA 663+00 TO STA 718+60	5560	5560	804.3	1193.5	6177.8	1853.3	11120	494.2	3706.7
	STA 718+60 US 34 OVERHEAD SN 050-0165									
	STA 718+60 TO STA 758+10	3950	3950	571.4	847.9	4388.9	1316.7	7900	351.1	2633.3
	STA 758+10 RR SN 050-0163 & 0164									
	STA 758+10 TO STA 877+71.34	11961.34	11961.34	1730.4	2567.7	13290.4	3987.1	23922.68	1063.2	7974.2
	STA 877+71.34 N 46TH RD SN 050-0162									
	STA 877+71.34 TO STA 965+71.34	8800	8800	1273.1	1889.1	9777.8	2933.3	17600	782.2	5866.7
END PROJECT SOUTH OF LEE CO. LINE										
NORTHBOUND TOTAL		50795.54	49991.54	7232	10791.5	55546.3	16663.8	101591.08	4515	33863.7
PROJECT STARTS 1456+95.71	I-39 SOUTHBOUND	LENGTH	LENGTH							
	STA EQUATION 1456+95.71 BK = 457+75.80 AH									
	STA 457+75.80 TO STA 472+79.34	1503.54	1503.54	217.5	322.8	1670.6	501.2	3007.08	133.6	1002.4
	STA 476+91.09 OVER VERMILLION SN 050-0169 & 0170									
OMISSION DL SHLDR ONLY	STA 472+79.34 TO STA 480+83.34	804			60			1608	71.5	536
	STA 480+83.34 TO STA 531+00	5016.66	5016.66	725.7	1076.9	5574.1	1672.2	10033.32	445.9	3344.4
	STA 531+00 CH 19 OVERHEAD									
	STA 531+00 TO STA 663+00	13200	13200	1909.6	2833.6	14666.7	4400	26400	1173.3	8800
	STA 663+00 N 42ND RD OVERHEAD									
	STA 663+00 TO STA 718+60	5560	5560	804.3	1193.5	6177.8	1853.3	11120	494.2	3706.7
	STA 718+60 US 34 OVERHEAD SN 050-0165									
	STA 718+60 TO STA 758+10	3950	3950	571.4	847.9	4388.9	1316.7	7900	351.1	2633.3
	STA 758+10 RR SN 050-0163 & 0164									
	STA 758+10 TO STA 877+71.34	11961.34	11961.34	1730.4	2567.7	13290.4	3987.1	23922.68	1063.2	7974.2
	STA 877+71.34 N 46TH RD SN 050-0162									
	STA 877+71.34 TO STA 965+71.34	8800	8800	1273.1	1889.1	9777.8	2933.3	17600	782.2	5866.7
END PROJECT SOUTH OF LEE CO. LINE										
SOUTHBOUND TOTAL		50795.54	49991.54	7232	10791.5	55546.3	16663.8	101591.08	4515	33863.7
GRAND TOTAL		101591.1	99983.08	14464	21583	111092.6	33327.6	203182.16	9030	67727.4

RAMP SCHEDULE

		INSIDE SHLDR	OUTSIDE SHLDR	AREA	HMA BINDER CSE. IL 19.0 FG N50	HMA SURF. CSE. IL 9.5 FG N50	HMA SURF. REM. 10"	SHLDR RUMBLE STRIPS 16"	BIT PRIME COAT
US 34									
SW EXIT	1600	4	6	1777.8	771.56	224	1777.8	3200	88.9
SE ENTRANCE	1600	4	6	1777.8	771.56	224	1777.8	3200	88.9
NW ENTRANCE	1600	4	6	1777.8	771.56	224	1777.8	3200	88.9
NE EXIT	1600	4	6	1777.8	771.56	224	1777.8	3200	88.9
TOTAL	6400				3086.24	896	7111.2	12800	355.6