

STATE OF ILLINOIS
DEPARTMENT OF TRANSPORTATION

DIVISION OF HIGHWAYS

**PROPOSED
HIGHWAY PLANS**

**FAI ROUTE 55 (I-55)
SECTION D3 PATCHING 2014-8**

**PAVEMENT PATCHING
GRUNDY COUNTY**

C-93-100-13

**PROJECT ENDS
WILL COUNTY LINE
(M.P. 233.49)**

INDEX OF SHEETS

1. COVER SHEET
2. GENERAL NOTES
3. SUMMARY OF QUANTITIES
4. TYPICAL SECTIONS
- 5 - 8. SCHEDULES
9. TRAFFIC CONTROL AND PROTECTION, STANDARD 701400 (SPECIAL)
- 10 - 12. CLASS A PATCHES
13. TYPICAL PAVEMENT MARKINGS

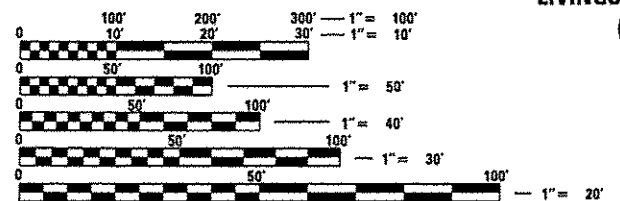
HIGHWAY STANDARDS

- | | |
|-----------|---|
| 000001-06 | STANDARD SYMBOLS, ABBREVIATIONS AND PATTERNS |
| 001001-02 | AREAS OF REINFORCEMENT BARS |
| 001006 | DECIMAL OF AN INCH AND OF A FOOT |
| 420701-02 | PAVEMENT FABRIC |
| 421001-02 | BAR REINFORCEMENT FOR CRC PAVEMENT |
| 701101-03 | OFF-ROAD OPERATIONS MULTILANE, 15' (4.5 m) TO 24" (600 mm) FROM PAVEMENT EDGE |
| 701401-07 | LANE CLOSURE, FREEWAY/EXPRESSWAY |
| 701411-08 | LANE CLOSURE, MULTILANE, AT ENTRANCE OR EXIT RAMP FOR SPEEDS ≥ 45 MPH |
| 701426-05 | LANE CLOSURE, MULTILANE INTERMITTENT OR MOVING OPERATION, FOR SPEEDS ≥ 45 MPH |
| 701901-02 | TRAFFIC CONTROL DEVICES |



LOCATION OF SECTION INDICATED THUS: ———

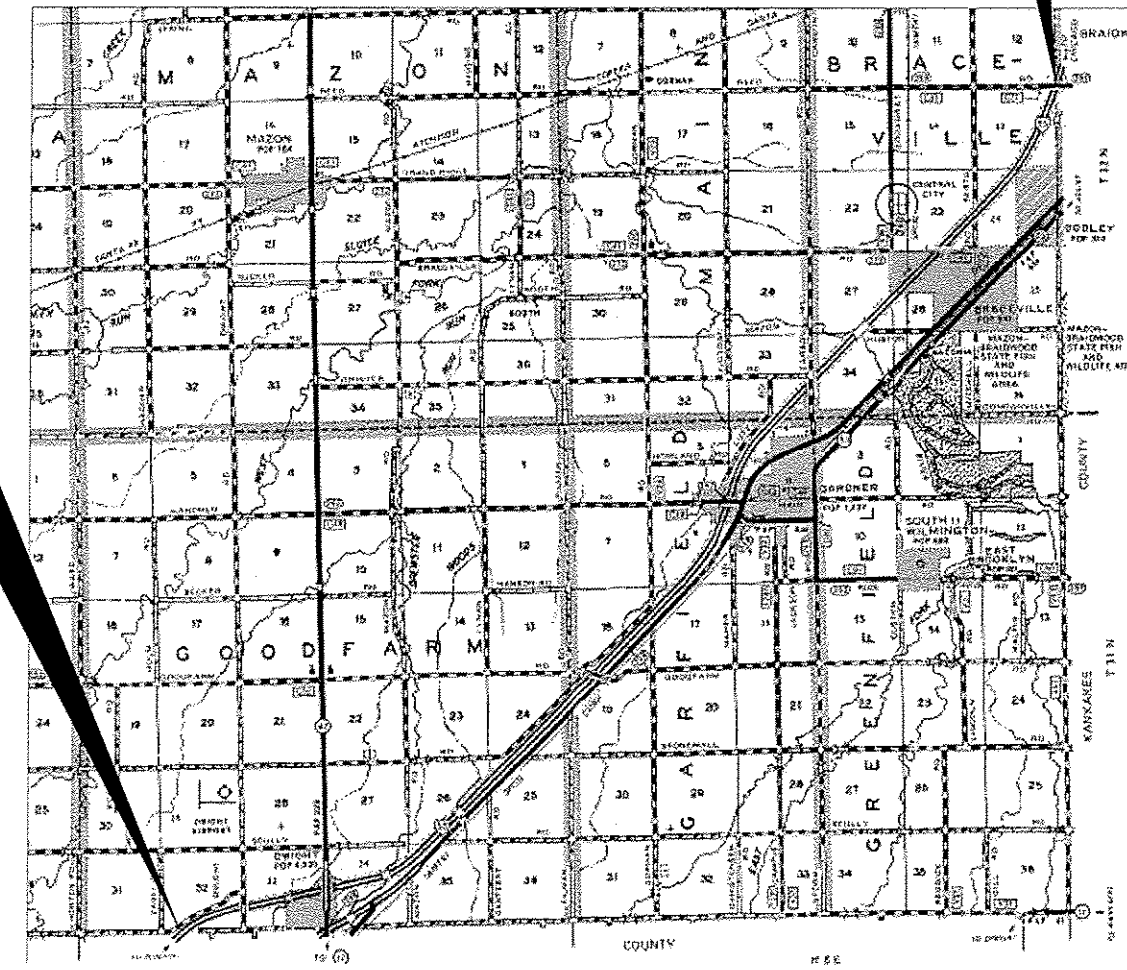
| | |
|---------------|--------|
| RURAL | |
| INTERSTATE | |
| FAI 55 (I-55) | |
| 2011 | |
| ADT | 23400 |
| P.V. | 64.59% |
| S.U. | 11.73% |
| M.U. | 23.68% |



FULL SIZE PLANS HAVE BEEN PREPARED USING STANDARD ENGINEERING SCALES. REDUCED SIZED PLANS WILL NOT CONFORM TO STANDARD SCALES. IN MAKING MEASUREMENTS ON REDUCED PLANS, THE ABOVE SCALES MAY BE USED.

J.U.L.I.E.
JOINT UTILITY LOCATION INFORMATION FOR EXCAVATION
1-800-892-0123
OR 811

PROJECT ENGINEER: JOE KANNEL P.E.
UNIT CHIEF: RON WOODSHANK
TOWNSHIP: VARIOUS
CONTRACT NO. 66D02



LOCATION MAP
NOT TO SCALE
GROSS LENGTH = 8149 FT. = 15.420 MI.
NET LENGTH = 684 FT. = 0.131 MI.

STATE OF ILLINOIS
DEPARTMENT OF TRANSPORTATION
DIVISION OF HIGHWAYS

SUBMITTED 4-3-2013
Paul A. Tanton
DEPUTY DIRECTOR OF HIGHWAYS, REGION ENGINEER

May 10 2013
John D. Baramelli, P.E.
ENGINEER OF DESIGN AND ENVIRONMENT

May 10 2013
Omair Osman, P.E.
DIRECTOR OF HIGHWAYS, CHIEF ENGINEER

**PRINTED BY THE AUTHORITY
OF THE STATE OF ILLINOIS**