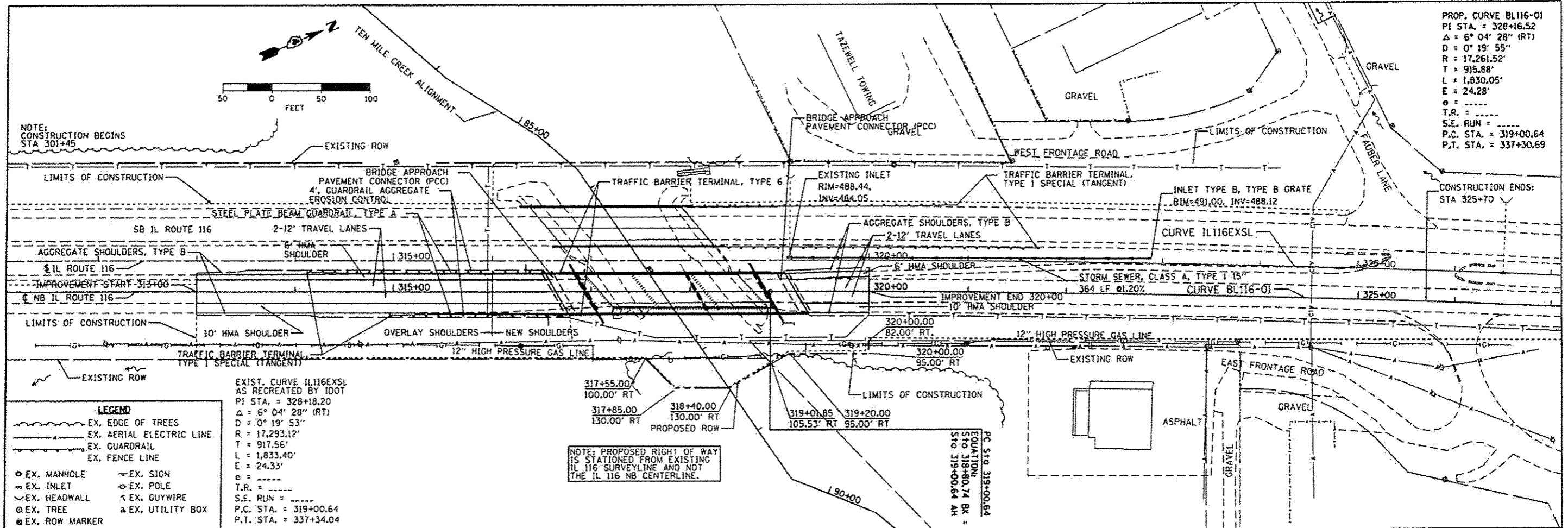


PROP. CURVE BL116-01  
 PI STA. = 328+16.52  
 $\Delta = 6^\circ 04' 28''$  (RT)  
 $D = 0^\circ 19' 55''$   
 $R = 17,261.52'$   
 $T = 915.88'$   
 $L = 1,830.05'$   
 $E = 24.28'$   
 $\theta = \dots$   
 T.R. = \dots  
 S.E. RUN = \dots  
 P.C. STA. = 319+00.64  
 P.T. STA. = 337+30.69



**LEGEND**  
 EX. EDGE OF TREES  
 EX. AERIAL ELECTRIC LINE  
 EX. GUARDRAIL  
 EX. FENCE LINE  
 EX. MANHOLE  
 EX. INLET  
 EX. HEADWALL  
 EX. TREE  
 EX. ROW MARKER  
 EX. SIGN  
 EX. POLE  
 EX. GUYWIRE  
 EX. UTILITY BOX

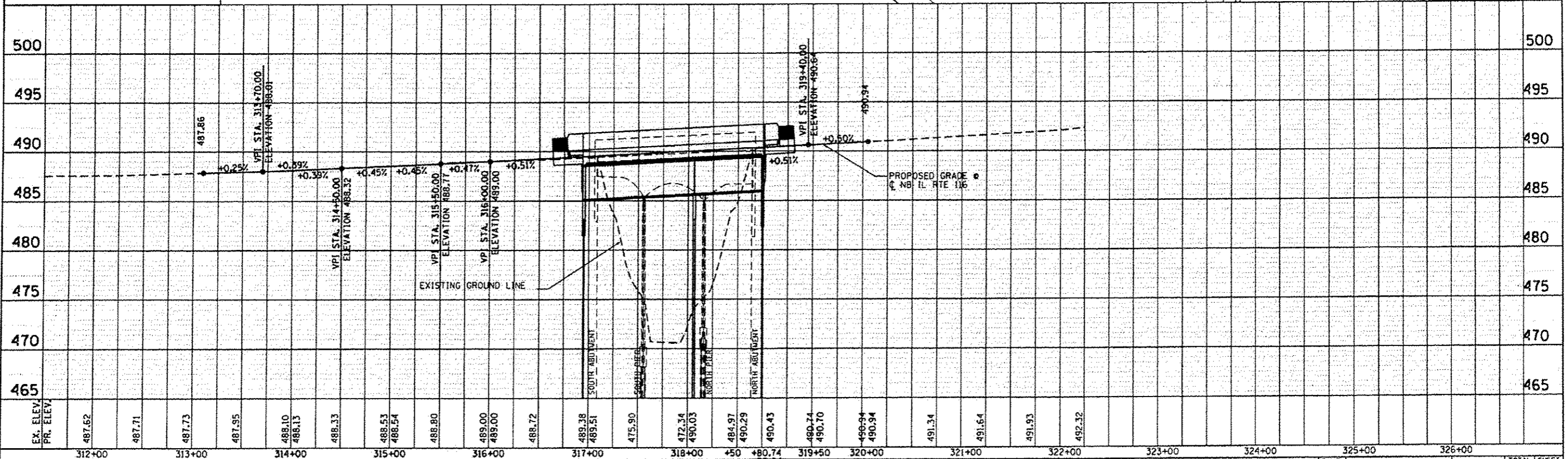
EXIST. CURVE IL116EXSL  
 AS RECREATED BY IDOT  
 PI STA. = 328+18.20  
 $\Delta = 6^\circ 04' 28''$  (RT)  
 $R = 17,293.12'$   
 $T = 917.56'$   
 $L = 1,833.40'$   
 $E = 24.33'$   
 $\theta = \dots$   
 T.R. = \dots  
 S.E. RUN = \dots  
 P.C. STA. = 319+00.64  
 P.T. STA. = 337+34.04

NOTE: PROPOSED RIGHT OF WAY IS STATIONED FROM EXISTING IL 116 SURVEYLINE AND NOT THE IL 116 NB CENTERLINE.

PC STA. 319+00.64  
 EQ. STA. 318+80.74  
 ST. STA. 319+00.64  
 AN =

DATE	
BY	
REVISED	
PROJECT NO.	
DATE	
BY	
REVISED	
PROJECT NO.	
DATE	
BY	
REVISED	
PROJECT NO.	
DATE	
BY	
REVISED	
PROJECT NO.	

DATE	
BY	
REVISED	
PROJECT NO.	
DATE	
BY	
REVISED	
PROJECT NO.	
DATE	
BY	
REVISED	
PROJECT NO.	



EX. ELEV.	487.62	487.71	487.73	487.95	488.10	488.13	488.33	488.53	488.54	488.90	489.00	489.00	488.72	489.28	489.51	475.90	472.24	490.03	484.97	490.29	490.43	480.74	490.70	490.94	490.94	491.34	491.64	491.93	492.32						
PR. ELEV.																																			
	312+00	313+00	314+00	315+00	316+00	317+00	318+00	319+00	320+00	321+00	322+00	323+00	324+00	325+00	326+00																				

**TERRA ENGINEERING LTD.**

USER NAME = WAH  
 DESIGNED - CL  
 DRAWN - WAH  
 CHECKED - KJC/HTL  
 DATE - 10/04/12  
 REVISED - KSH(100)24/10/13  
 REVISED - WAH  
 REVISED - A SHEET  
 REVISED - 6-4-13

STATE OF ILLINOIS  
 DEPARTMENT OF TRANSPORTATION

PLAN & PROFILE  
 IL 116 OVER TEN MILE CREEK  
 SCALE: 1"=50'  
 SHEET NO. 1 OF 1 SHEETS  
 STA. 312+00 TO STA. 327+00  
 F.A.P. RTE. 673  
 SECTION 1102B-118R  
 COUNTY TAZEWELL  
 TOTAL SHEETS 89  
 SHEET NO. 21  
 CONTRACT NO. 68671  
 FED. ROAD DIST. NO. ILLINOIS FED. AID PROJECT

T:\Projects\118-221-1001-1azBridges-Ten Mile Creek-Phase 1\Drawings\CADD Sheets\456671-1ht-planr\01.dgn