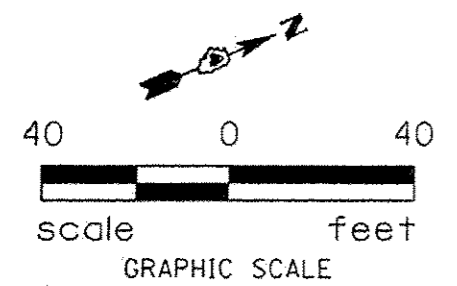
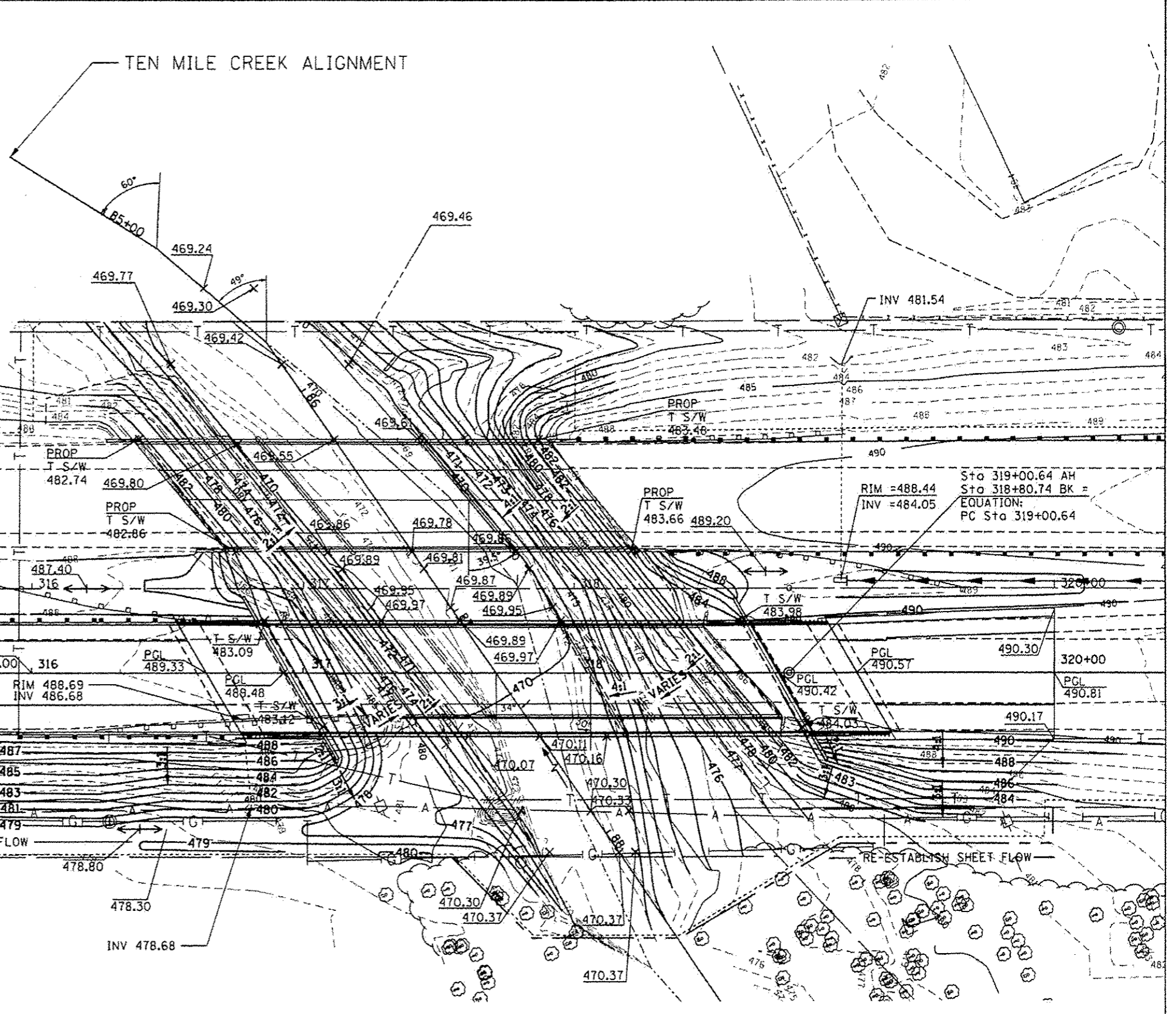
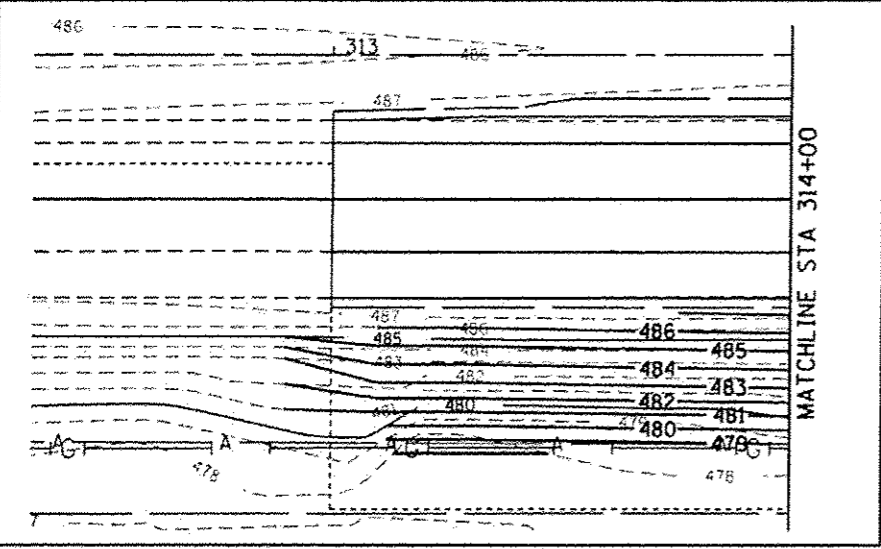


I:\Projects\11021\11021-Ten Mile Creek\Phase 1\11021-Proposed\11021-Proposed-Grading\11021-Proposed-Grading-plan.dwg
 User: WAH
 Date: 10/04/12
 Scale: 1"=50'
 Plot Date: 12/13/2012



REVISI^{ON} SHEET 6-4-13

	USER NAME - WAH	DESIGNED - CL	REVISED - KJH (10/07) 4/13/13	STATE OF ILLINOIS DEPARTMENT OF TRANSPORTATION	PROPOSED GRADING PLAN IL 116 OVER TEN MILE CREEK		F.A.P. RTE. 673	SECTION 1102B-11B	COUNTY TAZEWELL	TOTAL SHEETS 89	SHEET NO. 40
	PLOT SCALE - 1"=50' PLOT DATE - 12/13/2012	CHECKED - KJC/HTL	DATE - 10/04/12		REVISED -	SCALE: 1"=50'	SHEET NO. 1 OF 1 SHEETS	STA. TO STA.	ILLINOIS FED. AID PROJECT CONTRACT NO. 68671		