

STATE OF ILLINOIS
DEPARTMENT OF TRANSPORTATION
DIVISION OF HIGHWAYS

**PROPOSED
HIGHWAY PLANS**

F.A.P. ROUTE 673 (IL 116)
SECTION (102B-1)BR

**BRIDGE REPLACEMENT
TAZEWELL COUNTY**

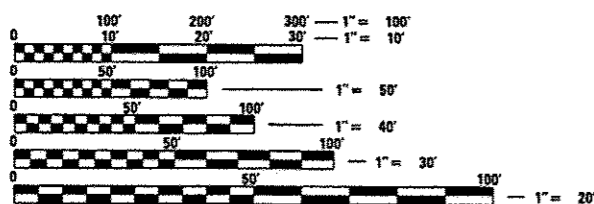
F.A.P. RTE. 673	SECTION 102B-1BR	COUNTY TAZEWELL	TOTAL SHEETS 89	SHEET NO. 1
ILLINOIS CONTRACT NO. 68671			* 89+1 = 90	

D-94-140-06

FOR INDEX OF SHEETS, SEE SHEET NO. 2

HIGHWAY STANDARDS 701901-02

- 000001-06 704001-07
- 280001-07 780001-03
- 420401-09 781001-03
- 515001-03 601101-01
- 602301-03
- 602306-03
- 602601-02
- 604036-02
- 630001-10
- 630301-06
- 631026-05
- 631031-11
- 635006-03
- 635011-02
- 666001-01
- 701101-03
- 701106-02
- 701416-07
- 701422-05

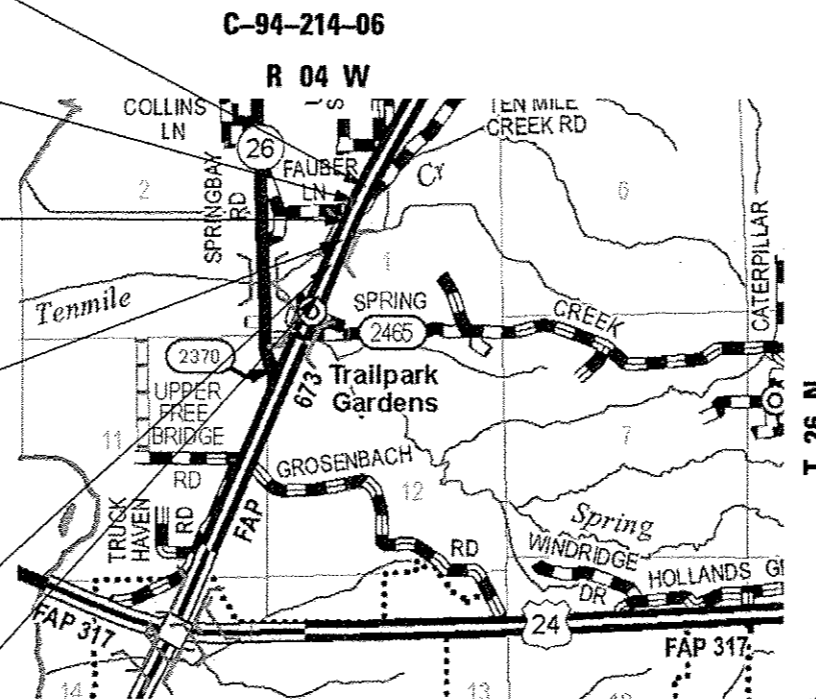


FULL SIZE PLANS HAVE BEEN PREPARED USING STANDARD ENGINEERING SCALES. REDUCED SIZED PLANS WILL NOT CONFORM TO STANDARD SCALES. IN MAKING MEASUREMENTS ON REDUCED PLANS, THE ABOVE SCALES MAY BE USED.

J.U.L.I.E.
JOINT UTILITY LOCATION INFORMATION FOR EXCAVATION
1-800-892-0123
OR 811

PROJECT ENGINEER: RICHARD DOTSON, P.E.
PROJECT MANAGER: KEVIN HORST, P.E.
CATALOG NO. 033422-00D
CONTRACT NO. 68671

- END CONSTRUCTION
STA 325 + 70
- END IMPROVEMENT
STA 320 + 00
- STATION EQUATION
STA 318 + 80.74 BK =
STA 319 + 00.64 AH
- BRIDGE REPLACEMENT
STA 316 + 93.71 TO
STA 318 + 76.59
- EXIST SN 090-0065
PROP SN 090-0179
- BEGIN IMPROVEMENT
STA 313 + 00
- BEGIN CONSTRUCTION
STA 301 + 45



LOCATION MAP
NOT TO SCALE



LOCATION OF SECTION INDICATED THUS: -

FUNCTIONAL CLASSIFICATION
MINOR ARTERIAL (NON-URBAN)
2009 ADT = 18,500
P.V. = 95.9% S.U. = 1.9% M.U. = 2.2%

GEORGE A. GHAREEB
062-047473
REGISTERED
PROFESSIONAL
ENGINEER
OF
ILLINOIS
11-30-13

TERRA
ENGINEERING LTD.
401 Main Street, Suite 1130
Peoria, IL 61602
(309)999-0123

STATE OF ILLINOIS
DEPARTMENT OF TRANSPORTATION
DIVISION OF HIGHWAYS

SUBMITTED Dec 14, 2012

DEPUTY DIRECTOR OF HIGHWAYS, REGION ENGINEER

ENGINEER OF DESIGN AND ENVIRONMENT

DIRECTOR OF HIGHWAYS, CHIEF ENGINEER

**PRINTED BY THE AUTHORITY
OF THE STATE OF ILLINOIS**

GROSS LENGTH = 2,405.1 FT. = 0.46 MILE
NET LENGTH = 680.1 FT. = 0.13 MILE

REVISÉ 6-4-13

INDEX OF SHEETS

1 COVER SHEET
 2 INDEX OF SHEETS AND GENERAL NOTES
 3 STATUS OF UTILITIES
 4-10 SUMMARY OF QUANTITIES
 11 TYPICAL SECTIONS
 12-18 SCHEDULE OF QUANTITIES
 19 ALIGNMENT, TIES & BENCHMARKS
 20 REMOVAL PLANS
 21 PLAN & PROFILE
 22 TRAFFIC CONTROL TYPICAL SECTION, GENERAL NOTES AND CONSTRUCTION SEQUENCE
 23-25 TEMPORARY CROSSOVER PLAN AND PROFILE
 26 TEMPORARY SIGN PANEL ASSEMBLY DETAIL
 27-29 TEMPORARY LIGHTING DETAIL
 30-38 TEMPORARY CROSSOVER CROSS SECTIONS
 39 EROSION CONTROL PLAN
 40 PROPOSED GRADING PLAN
 41 SCOUR PROTECTION PLAN
 42 PROPOSED ROW PLANS
 43 PAVEMENT MARKING PLANS
 * 44-65 STRUCTURE PLANS (090-0179)
 66 STRUCTURE PLANS (090-0110)
 67-80 DISTRICT STANDARDS
 81-85 ROADWAY CROSS SECTIONS
 86-89 TEN MILE CREEK CROSS SECTIONS

*** 43A PRE STAGE CONSTRUCTION**

GENERAL NOTES

- SOIL REPORT AVAILABILITY**
 ALL SOILS DATA COLLECTED AND PROCESSED FOR THE SOILS REPORT MADE IN CONJUNCTION WITH THE DESIGN OF THIS IMPROVEMENT IS ON FILE AT THE DISTRICT OFFICE WHERE IT IS AVAILABLE FOR INSPECTION BY CONTRACTORS OR PROSPECTIVE BIDDERS. BY SUBMITTING A BID, THE CONTRACTOR ACKNOWLEDGES THAT THE SOILS REPORT HAS BEEN MADE AVAILABLE AND IS AWARE OF THE REPORT CONTENTS AND APPENDICES.
- AVAILABILITY OF ELECTRONIC FILES**
 MICROSTATION AND GEOPAK FILES OF THIS PROJECT WILL BE MADE AVAILABLE TO THE CONTRACTOR. IF THERE IS A CONFLICT BETWEEN THE ELECTRONIC FILES AND THE PRINTED CONTRACT PLANS AND DOCUMENTS, THE PRINTED CONTRACT PLANS AND DOCUMENTS SHALL TAKE PRECEDENCE OVER THE ELECTRONIC FILES. THE CONTRACTOR SHALL ACCEPT ALL RISK ASSOCIATED WITH USING THE ELECTRONIC FILES AND SHALL HOLD THE DEPARTMENT HARMLESS FOR ANY ERRORS OR OMISSIONS IN THE ELECTRONIC FILES AND THE DATA CONTAINED THEREIN. ERRORS OR DELAYS RESULTING FROM THE USE OF THE ELECTRONIC FILES BY THE CONTRACTOR SHALL NOT RESULT IN AN EXTENSION OF TIME FOR ANY INTERIM OR FINAL COMPLETION DATE OR SHALL NOT BE CONSIDERED CAUSE FOR ADDITIONAL COMPENSATION. THE CONTRACTOR SHALL NOT USE, SHARE, OR DISTRIBUTE THESE ELECTRONIC FILES EXCEPT FOR THE PURPOSE OF CONSTRUCTING THIS CONTRACT. ANY CLAIMS BY THIRD PARTIES DUE TO USE OR ERRORS SHALL BE THE SOLE RESPONSIBILITY OF THE CONTRACTOR. THE CONTRACTOR SHALL INCLUDE THIS DISCLAIMER WITH THE TRANSFER OF THESE ELECTRONIC FILES TO ANY OTHER PARTIES AND SHALL INCLUDE APPROPRIATE LANGUAGE BINDING THEM TO SIMILAR RESPONSIBILITIES.
- UTILITIES - LOCATIONS/INFORMATION ON PLANS**
 THE LOCATIONS OF EXISTING WATER MAINS, GAS MAINS, SEWERS, ELECTRIC POWER LINES, TELEPHONE LINES AND OTHER UTILITIES AS SHOWN ON THE PLANS ARE BASED ON CAREFUL FIELD INVESTIGATION AND THE BEST INFORMATION AVAILABLE, BUT THEY ARE NOT GUARANTEED, UNLESS ELEVATIONS ARE SHOWN --- ALL UTILITY LOCATIONS SHOWN ON THE CROSS SECTIONS ARE BASED ON THE APPROXIMATE DEPTH SUPPLIED BY THE UTILITY COMPANY. IT SHALL BE THE CONTRACTOR'S RESPONSIBILITY TO ASCERTAIN THEIR EXACT LOCATION FROM THE UTILITY COMPANIES AND BY FIELD INSPECTION.
- PLAN ELEVATIONS - U.S.G.S. MEAN SEA LEVEL DATUM**
 ALL ELEVATIONS SHOWN ON THE PLANS ARE ESTABLISHED FROM U.S.G.S. MEAN SEA LEVEL DATUM.
- COMMITMENTS**
 THERE ARE NO KNOWN COMMITMENTS RELATED TO THIS PROJECT.
- CLEARING**
 AT LOCATIONS WHERE CLEARING IS INDICATED ON THE PLANS BEYOND THE LIMITS OF THE PROPOSED EXCAVATION OR EMBANKMENT, THE CONTRACTOR SHALL RESTORE THE DISTURBED EARTH BY BLADING AND SHAPING TO BLEND WITH THE ADJACENT GROUND. THE CLEARING WILL NOT BE PAID FOR SEPARATELY BUT SHALL BE INCLUDED IN THE COST OF THE EXCAVATION PAY ITEMS IN THE PLANS. PAYMENT FOR RESEEDING OR RESODDING WILL BE AS PROVIDED IN THE PLANS.
- TREE REMOVAL**
 THE DISTRICT FOUR TREE COMMITTEE SHOULD BE CONTACTED AND PRIOR APPROVAL OBTAINED FOR ANY TREE REMOVAL BEYOND THE LIMITS/LOCATIONS INCLUDED IN THE PLANS.
- ENVIRONMENTAL REVIEWS**
 PRIOR TO THE USE OF ANY PROPOSED BORROW AREAS, USE AREAS (TEMPORARY ACCESS ROADS, DETOURS, RUN-AROUNDS, ETC.) AND/OR WASTE AREAS, THE CONTRACTOR SHALL FILE THE REQUIRED ENVIRONMENTAL RESOURCE REQUEST SURVEYS ACCORDING TO SECTION 107.22 OF THE STANDARD SPECIFICATIONS. THESE SURVEYS ARE REQUIRED IN ORDER FOR THE DEPARTMENT TO CONDUCT CULTURAL AND BIOLOGICAL RESOURCE SURVEYS FOR THE PROPOSED SITE.
 PRIOR TO ANY WASTE MATERIALS BEING REMOVED FROM THE CONSTRUCTION SITE THE REQUIRED ENVIRONMENTAL RESOURCE SURVEYS WILL NEED TO BE OBTAINED AND FILED BY THE CONTRACTOR. EXCESS WASTE PRODUCTS REMOVED FROM THE CONSTRUCTION SITE SHALL BE DISPOSED OF AS REQUIRED IN SECTION 202.03 OF THE STANDARD SPECIFICATIONS.
 ANY PROTRUDING METAL BARS SHALL BE REMOVED PRIOR TO THE DISPOSAL OF BROKEN CONCRETE AT APPROVED DISPOSAL SITES.
 THE REQUIRED ENVIRONMENTAL RESOURCE DOCUMENTATION SHALL INCLUDE THE FOLLOWING:
 1. BDE FORM 2289 (ENVIRONMENTAL SURVEY REQUEST)
 2. A LOCATION MAP SHOWING THE SIZE LIMITS AND LOCATION OF THE USE AREA
 3. SIGNED PROPERTY OWNER AGREEMENT FORM D4 P10100
 4. COLOR PHOTOGRAPHS DEPICTING THE USE AREA
 5. BORROW AREA ENTRY AGREEMENT FORM D4 P10101
 PLEASE NOTE THAT A MINIMUM OF TWO WEEKS SHALL BE ALLOWED FOR THE DISTRICT TO OBTAIN THE REQUIRED ENVIRONMENTAL CLEARANCES.

- PAVEMENT STATION NUMBERS & PLACEMENT**
 THE CONTRACTOR SHALL PROVIDE LABOR AND MATERIALS REQUIRED TO IMPRINT PAVEMENT STATION NUMBERS IN THE FINISHED SURFACE OF THE PAVEMENT AND/OR OVERLAY. THE NUMBERS SHALL BE APPROXIMATELY 3/4 INCH (20 MM) WIDE, 5 INCHES (125 MM) HIGH AND 5/8 INCH (15 MM) DEEP. THE PAVEMENT STATION NUMBERS SHALL BE INSTALLED AS SPECIFIED HEREIN:
 INTERVAL - 200 FEET (ENGLISH STATIONING) OR 100 METERS (METRIC STATIONING)
 BOTTOM OF NUMBERS - 6 INCHES (150 MM) FROM THE INSIDE EDGE OF THE PAVEMENT MARKING
 LOCATION:
 - 2, 3, & 5 LANE PAVEMENTS - RIGHT EDGE OF PAVEMENT IN DIRECTION OF INCREASING STATIONS
 - MULTI-LANE DIVIDED ROADWAYS - OUTSIDE EDGE OF PAVEMENT IN BOTH DIRECTIONS
 - RAMPS - ALONG BASELINE EDGE OF PAVEMENT
 POSITION - STATIONS SHALL BE PLACED SO THEY CAN BE READ FROM THE ADJACENT SHOULDER
 FORMAT - ENGLISH (METRIC) PAVEMENT STATIONS SHALL USE THIS FORMAT "XXX (XX+X00)", WHERE X REPRESENTS THE PAVEMENT STATION
 THIS WORK WILL NOT BE PAID FOR SEPARATELY, BUT WILL BE INCLUDED IN THE COST OF THE ASSOCIATED PAVEMENT AND/OR OVERLAY PAY ITEMS.
- POLYMERIZED BITUMINOUS MATERIALS (PRIME COAT) RATES**

SURFACE TYPE	ESTIMATED TRUCK APPLICATION	RATE	RESIDUAL RATE
MILLED (HMA OR PCC)	0.08 GAL/SY (0.00034 TON/SY)	0.04 GAL/SY	
EXISTING PAVEMENT	0.05 GAL/SY (0.00022 TON/SY)	0.025 GAL/SY	
FOG COAT (BETWEEN LIFTS)	0.05 GAL/SY (0.00022 TON/SY)	0.025 GAL/SY	

 NOTE: ESTIMATED TRUCK APPLICATION RATE IS USED FOR ESTIMATING QUANTITIES.
- HOT-MIX ASPHALT MIXTURE REQUIREMENTS**

MIXTURE USE(S):	MAINLINE SURFACE COURSE	LEVELING BINDER	TEMPORARY PAVEMENT AND SHOULDERS (TOP 1.5" OF TEMPORARY PAVEMENT AND TOP 2.25" OF	TEMPORARY PAVEMENT AND SHOULDERS (BOTTOM LIFTS)
AC/PG:	SBS or SBR 76-22	SBS or SBR 76-22	PG 64-22	PG 64-22
RAP% (MAX): **	10%	10%	15%	25%
DESIGN AIR VOIDS	4.0% @ N=70	4.0% @ N=50	3.0% @ N=50	4.0% @ N=50
MIXTURE COMPOSITION: (GRADATION MIXTURE)	IL 9.5 or IL 12.5	IL 4.75	IL 9.5 or 12.5	IL 19.0
FRICTION AGGREGATE	MIXTURE E	N/A	MIXTURE C	N/A

** IF RAP OPTION IS SELECTED, THE ASPHALT CEMENT GRADE MAY NEED TO BE ADJUSTED. THIS WILL BE DETERMINED BY THE MATERIALS ENGINEER.

- RIGHT-OF-WAY MARKERS**
 WHEN INSTALLING RIGHT-OF-WAY MAKERS, CARE SHALL BE TAKEN TO NOT DISTURB ANY EXISTING PROPERTY/RIGHT-OF-WAY PINS. IF A PROPERTY/RIGHT-OF-WAY PIN IS FOUND AT THE LOCATION OF A PROPOSED RIGHT-OF-WAY MARKER, THE MARKER SHALL BE PLACED ONE (1) FOOT IN FRONT OF THE PIN.
- ENGINEERS FIELD OFFICE**
 ADD THE FOLLOWING SENTENCE TO THE END OF PARAGRAPH 670.02 (I) AND 670.04 (E):
 ALL OF THE TELEPHONE LINES PROVIDED SHALL HAVE UNPUBLISHED NUMBERS.
- BUTT JOINT CUTTING TIME RESTRICTION**
 BUTT JOINTS SHALL NOT BE MILLED MORE THAN THREE (3) DAYS PRIOR TO PLACEMENT OF THE HMA SURFACE COURSE.

REVISI 6-4-13



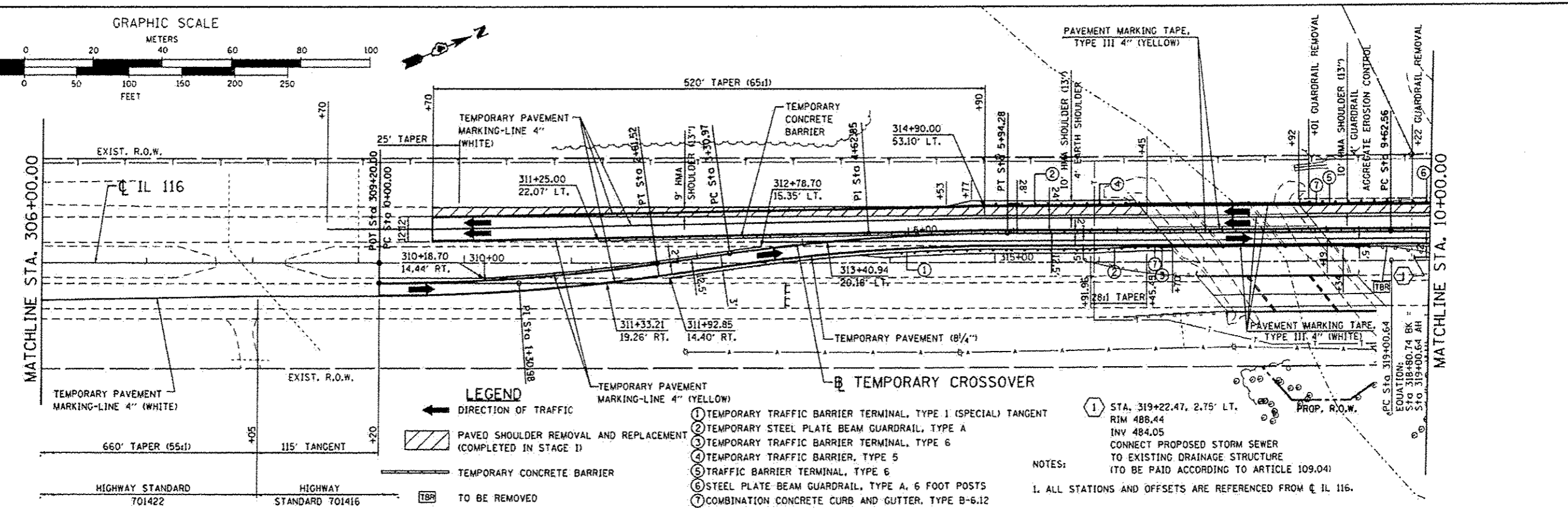
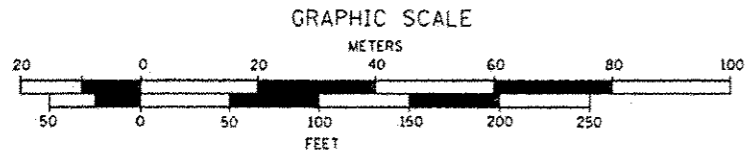
USER NAME : WAH	DESIGNED - CL	REVISED -
PLOT SCALE : 100.0000' / in.	DRAWN - WAH	REVISED -
PLOT DATE : 12/13/2012	CHECKED - KJC/HTL	REVISED -
	DATE - 10/04/12	REVISED -

STATE OF ILLINOIS
 DEPARTMENT OF TRANSPORTATION

INDEX OF SHEETS AND GENERAL NOTES
 IL 116 OVER TEN MILE CREEK

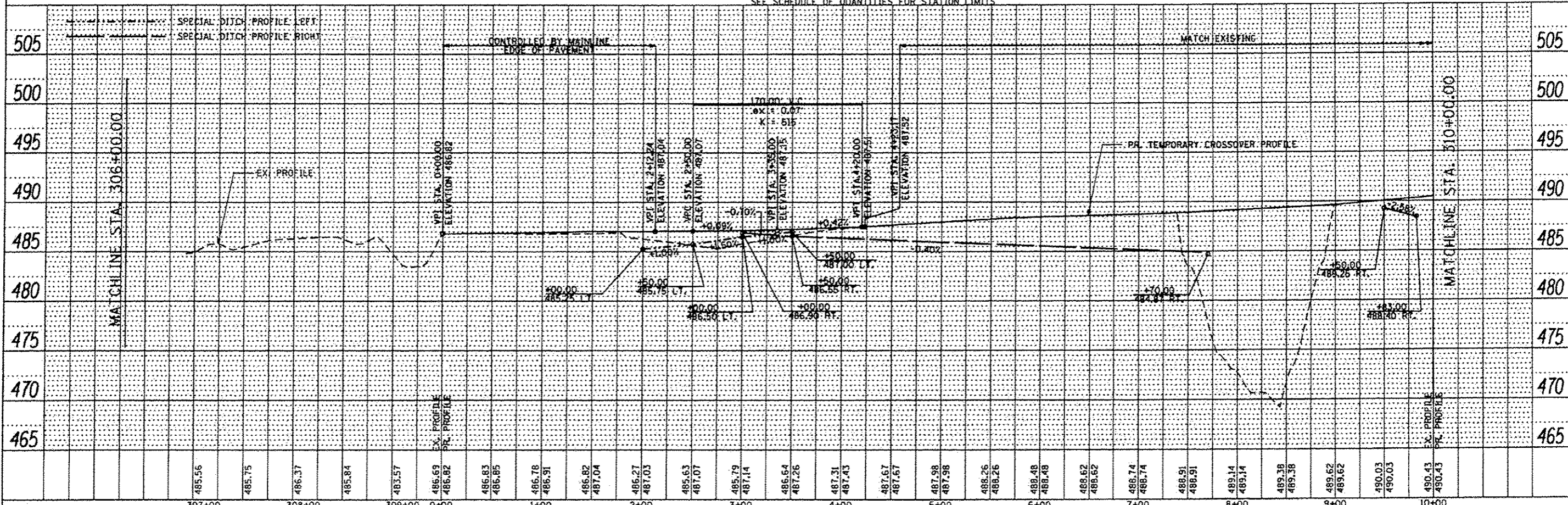
F.A.P. RTE. 673	SECTION 1102B-118R	COUNTY TAZEWELL	TOTAL SHEETS 89	SHEET NO. 2
CONTRACT NO. 68671				
[ILLINOIS] FED. AID PROJECT				

SCALE: NTS SHEET NO. 1 OF 1 SHEETS STA. TO STA.

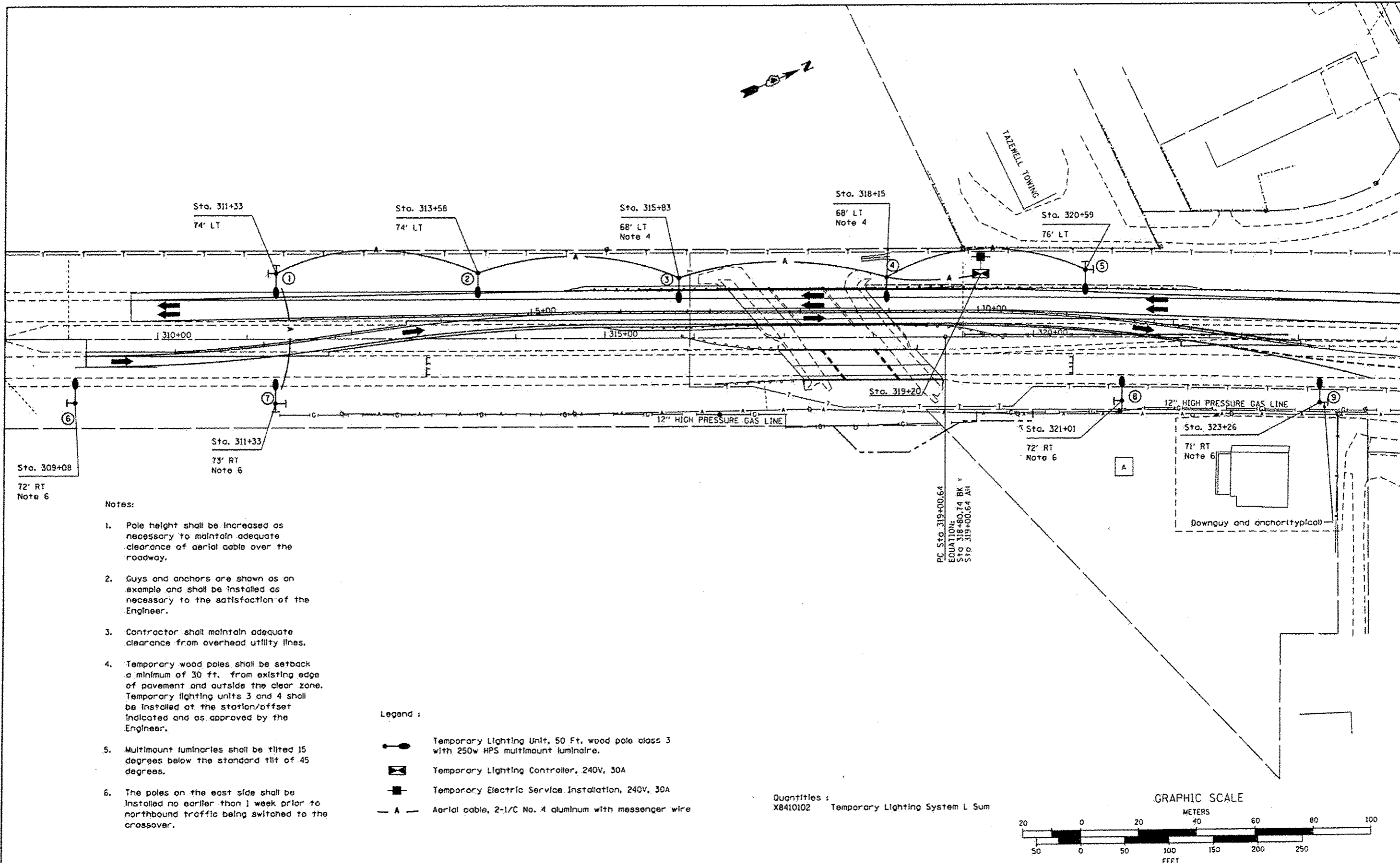


DATE	
BY	
REVISION	
PLAN	
NOTE BOOK	
NO. OF SHEETS	
SHEET NO.	
DATE	
BY	
REVISION	
PROFILE	
NOTE BOOK	
NO. OF SHEETS	
SHEET NO.	
DATE	
BY	
REVISION	

DATE	
BY	
REVISION	
PROFILE	
NOTE BOOK	
NO. OF SHEETS	
SHEET NO.	
DATE	
BY	
REVISION	



DESIGN FIRM whks engineers • planners • land surveyors no. 184001036	USER NAME • bsmiths FILE NAME • 0486671-wht-MOT.dgn PLOT SCALE • 1/8" = 1'-0" PLOT DATE • 12/13/2012	DESIGNED - CHECKED - DRAWN - CHECKED -	REVISED REVISED REVISED REVISED	STATE OF ILLINOIS DEPARTMENT OF TRANSPORTATION	IL ROUTE 116 OVER TEN MILE CREEK TEMPORARY CROSSOVER PLAN AND PROFILE	F.A.P. RTE. 673 SECTION 102B-10BR COUNTY TAZEWELL TOTAL SHEETS 89 SHEET NO. 24 CONTRACT NO. 68671	SCALE: 1" = 50' SHEET NO. 2 OF 3 SHEETS STA. 306+00.00 TO STA. 10+00.00	ILLINOIS FED. AID PROJECT
--	---	---	--	---	--	--	---	---------------------------



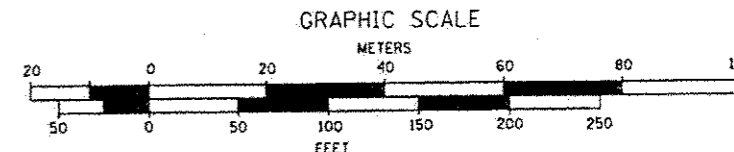
Notes:

1. Pole height shall be increased as necessary to maintain adequate clearance of aerial cable over the roadway.
2. Guys and anchors are shown as an example and shall be installed as necessary to the satisfaction of the Engineer.
3. Contractor shall maintain adequate clearance from overhead utility lines.
4. Temporary wood poles shall be setback a minimum of 30 ft. from existing edge of pavement and outside the clear zone. Temporary lighting units 3 and 4 shall be installed at the station/offset indicated and as approved by the Engineer.
5. Multimount luminaires shall be tilted 15 degrees below the standard tilt of 45 degrees.
6. The poles on the east side shall be installed no earlier than 1 week prior to northbound traffic being switched to the crossover.

Legend :

- Temporary Lighting Unit, 50 Ft. wood pole class 3 with 250w HPS multimount luminaire.
- Temporary Lighting Controller, 240V, 30A
- Temporary Electric Service Installation, 240V, 30A
- Aerial cable, 2-1/2 No. 4 aluminum with messenger wire

Quantities :
X8410102 Temporary Lighting System L Sum



REVISIED SHEET 6-4-13

FILE NAME : D468671-act-temp lighting-Blidgn	USER NAME : WNS	DESIGNED - IDOT	REVISED - KJH (over) 4/10/13
	PLOT SCALE = 100,000 / 1" = 100'	DRAWN -	REVISED -
Default	PLOT DATE = 12/13/2012	CHECKED -	REVISED -
		DATE -	REVISED -

STATE OF ILLINOIS
DEPARTMENT OF TRANSPORTATION

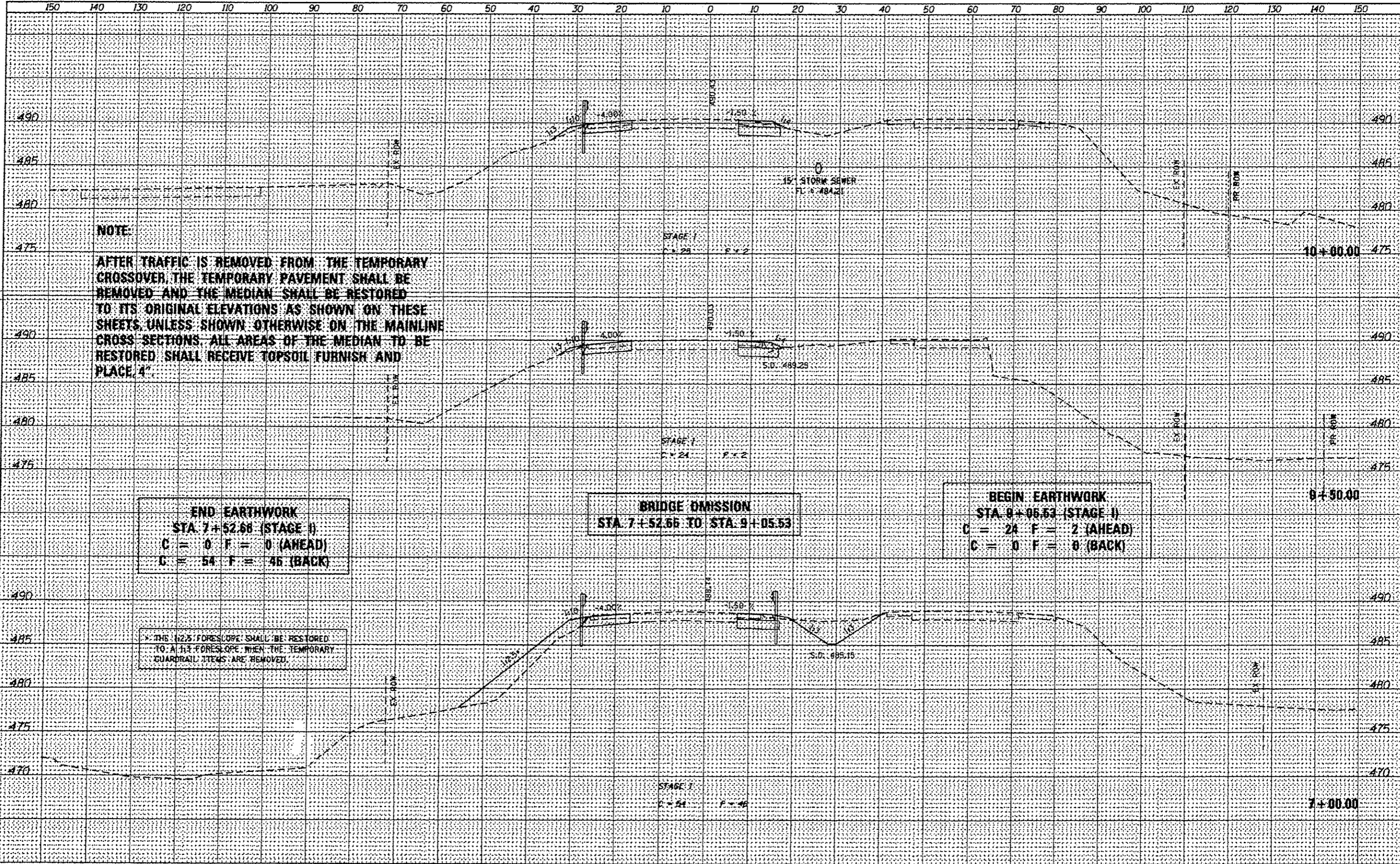
TEMPORARY LIGHTING DETAIL

SCALE: 50 = 1 SHEET 1 OF 3 SHEETS STA. TO STA.

F.A.P. RTE. 673	SECTION 1102B-1BR	COUNTY TAZEWELL	TOTAL SHEETS 89	SHEET NO. 27
CONTRACT NO. 68671			ILLINOIS FED. AID PROJECT	

DATE	
BY	
FINAL SURVEY	
NOTED	
NO.	
AREAS CHECKED	

DATE	
BY	
ORIGINAL SURVEY	
NOTED	
NO.	
AREAS CHECKED	



NOTE:
 AFTER TRAFFIC IS REMOVED FROM THE TEMPORARY CROSSOVER, THE TEMPORARY PAVEMENT SHALL BE REMOVED AND THE MEDIAN SHALL BE RESTORED TO ITS ORIGINAL ELEVATIONS AS SHOWN ON THESE SHEETS, UNLESS SHOWN OTHERWISE ON THE MAINLINE CROSS SECTIONS. ALL AREAS OF THE MEDIAN TO BE RESTORED SHALL RECEIVE TOPSOIL FURNISH AND PLACE 4"

END EARTHWORK
 STA 7+52.66 (STAGE I)
 C = 0 F = 0 (AHEAD)
 C = 54 F = 46 (BACK)

BRIDGE OMISSION
 STA 7+52.66 TO STA 9+05.53

BEGIN EARTHWORK
 STA 9+06.63 (STAGE I)
 C = 24 F = 2 (AHEAD)
 C = 0 F = 0 (BACK)

THE 1:2.5 FORESLOPE SHALL BE RESTORED TO A 1:1 FORESLOPE WHEN THE TEMPORARY GUARDRAIL ITEMS ARE REMOVED.

Design firm
 no. 184001036



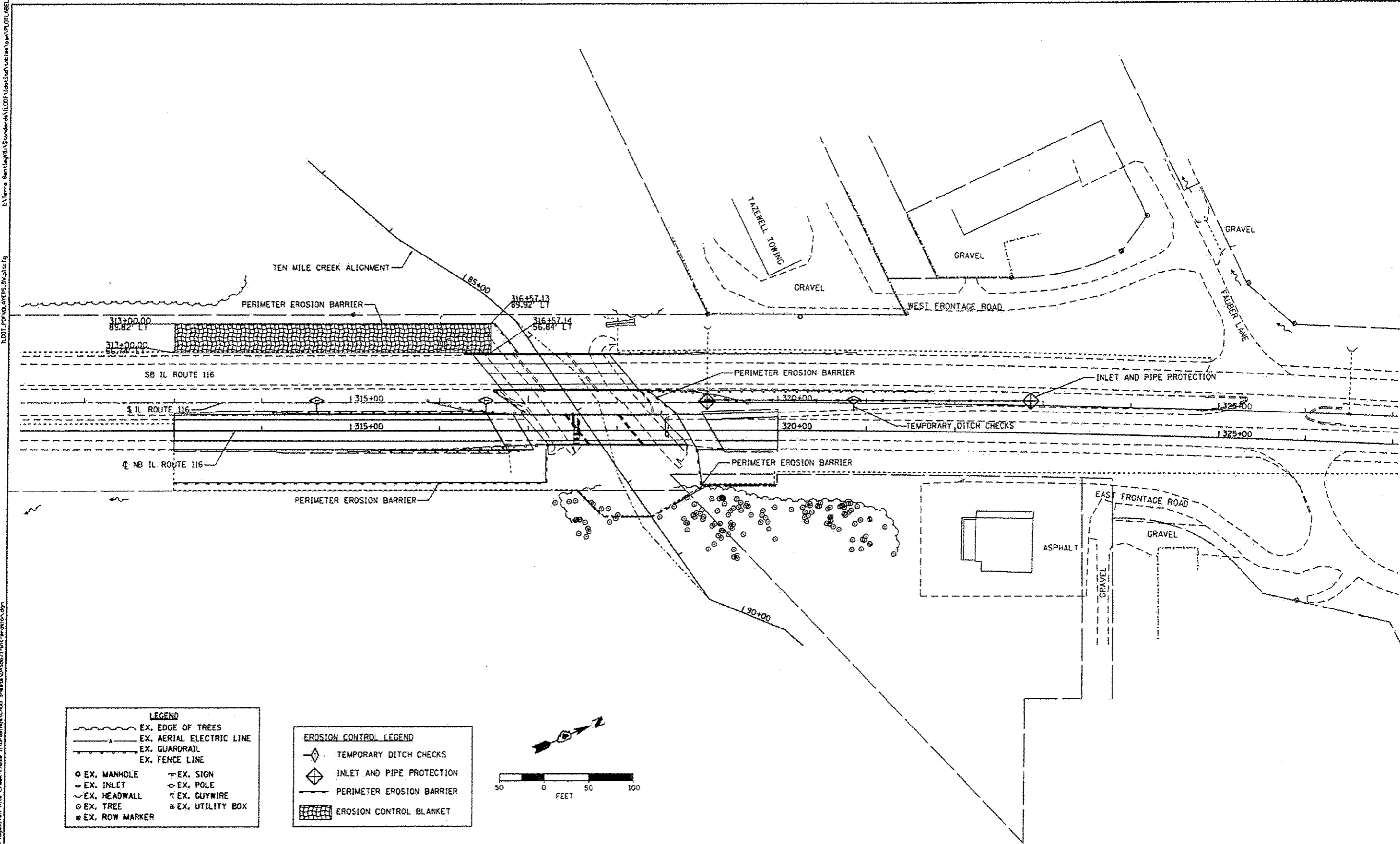
USER NAME	bmasthms	DESIGNED	-
FILE NAME	D468671.dwg	CHECKED	-
PLOT SCALE	28,8880' / IN.	DRAWN	-
PLOT DATE	12/13/2012	CHECKED	-
REVISED	K3H (over) 9/10/12	REVISED	REVEN
REVISED	6-4-13	REVISED	SHEET

STATE OF ILLINOIS
 DEPARTMENT OF TRANSPORTATION

IL ROUTE 116 OVER TEN MILE CREEK
 TEMPORARY CROSSOVER CROSS SECTIONS
 SCALE: 1" = 10'
 SHEET NO. 6 OF 9 SHEETS
 STA. 7+00.00 TO STA. 10+00.00

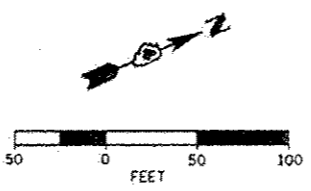
F.A.P. RTE.	SECTION	COUNTY	TOTAL SHEETS	SHEET NO.
673	(1028-1)BR	TAZEWELL	89	35
CONTRACT NO. 68671				ILLINOIS FED. AID PROJECT

I:\Projects\10-221-1001-Ten Mile Creek-Phase II\Drawings\2000 Sheets\0468671-eh\erocn.dgn
 I:\Projects\10-221-1001-Ten Mile Creek-Phase II\Drawings\2000 Sheets\0468671-eh\erocn.dgn
 I:\Projects\10-221-1001-Ten Mile Creek-Phase II\Drawings\2000 Sheets\0468671-eh\erocn.dgn



LEGEND	
	EX. EDGE OF TREES
	EX. AERIAL ELECTRIC LINE
	EX. GUARDRAIL
	EX. FENCE LINE
	EX. MANHOLE
	EX. INLET
	EX. HEADWALL
	EX. TREE
	EX. ROW MARKER
	EX. SIGN
	EX. POLE
	EX. GUYWIRE
	EX. UTILITY BOX

EROSION CONTROL LEGEND	
	TEMPORARY DITCH CHECKS
	INLET AND PIPE PROTECTION
	PERIMETER EROSION BARRIER
	EROSION CONTROL BLANKET



REVISIED SHEET 6-4-13



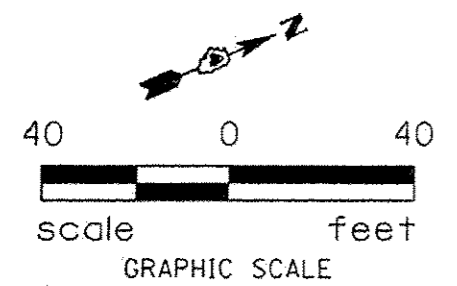
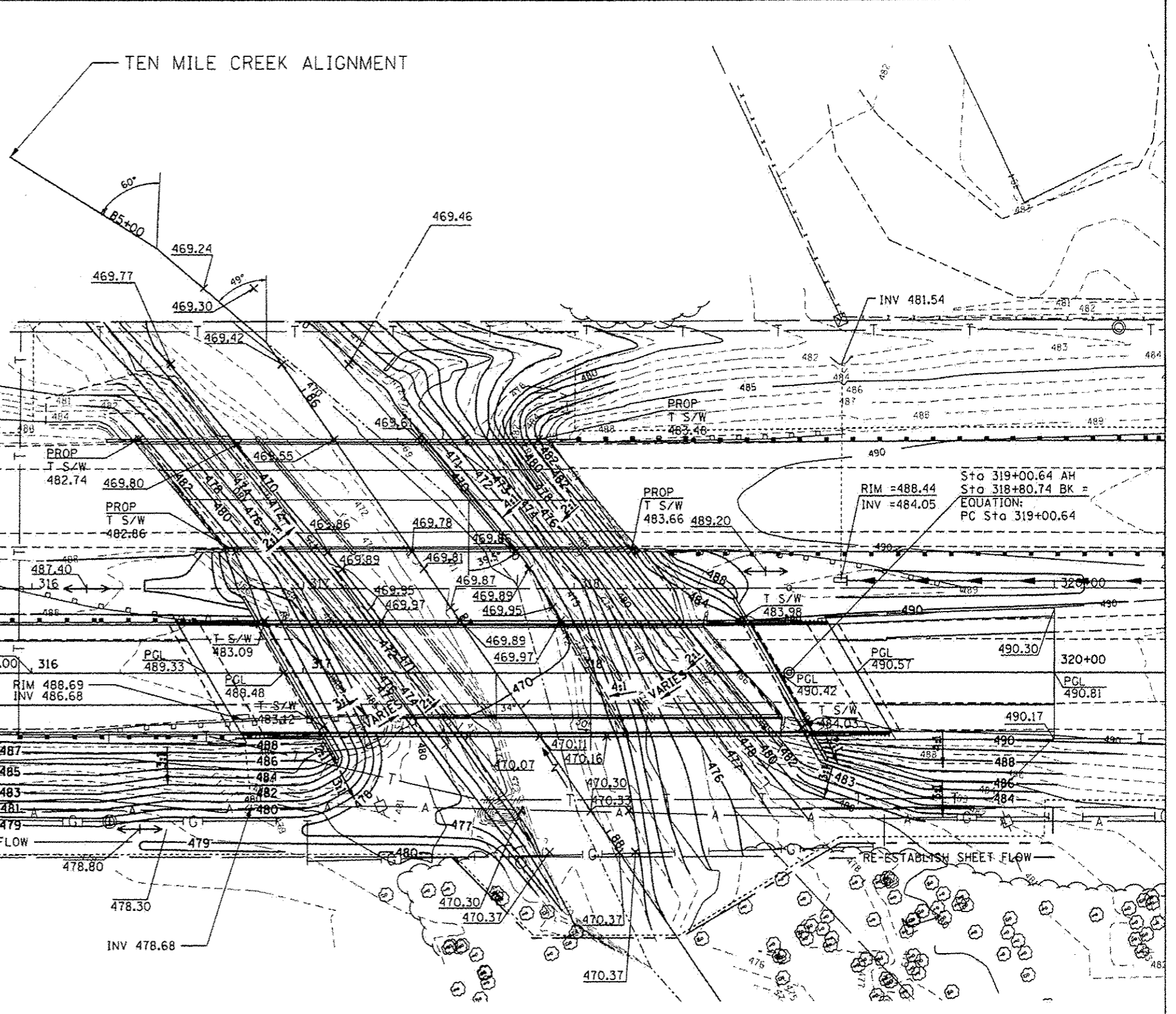
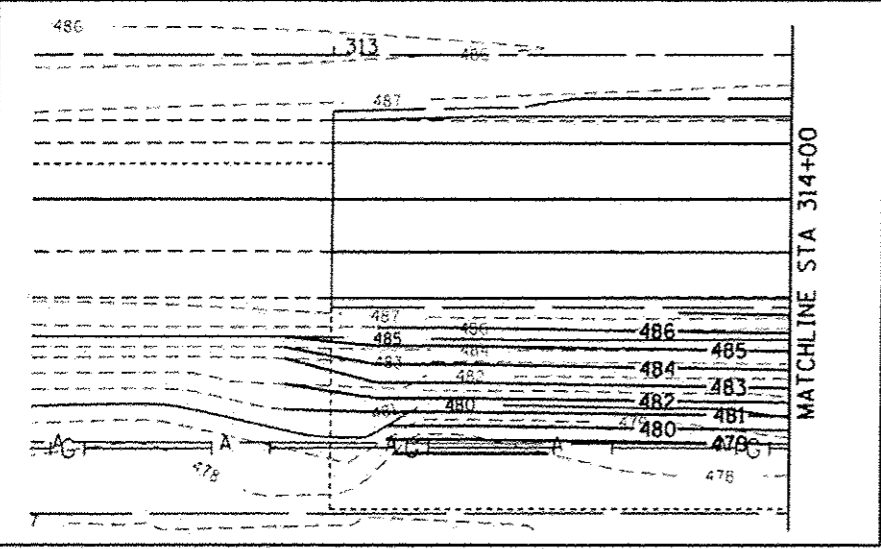
USER NAME - WAH	DESIGNED - CL	REVISED - KJA (over) 4/6/13
PLOT SCALE - 1/80,000	DRAWN - WAH	REVISED -
PLOT DATE - 12/13/2012	CHECKED - KJC/HTL	REVISED -
	DATE - 10/04/12	REVISED -

STATE OF ILLINOIS
DEPARTMENT OF TRANSPORTATION

EROSION CONTROL PLAN IL 116 OVER TEN MILE CREEK			
SCALE: 1"=50'	SHEET NO. 1 OF 1 SHEETS	STA.	TO STA.

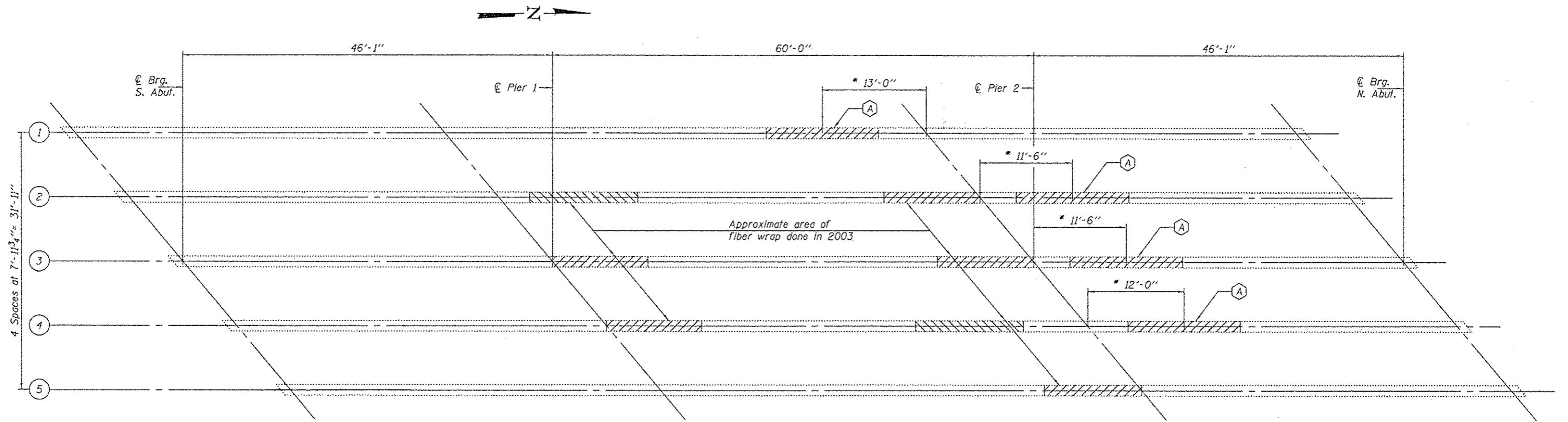
F.A.P. RTE.	SECTION	COUNTY	TOTAL SHEETS	SHEET NO.
673	(102B-18R)	TAZEWELL	89	39
CONTRACT NO. 68671				
(ILLINOIS) FED. AID PROJECT				

I:\Projects\11021\11021-Ten Mile Creek\Phase 1\11021-Proposed\11021-Proposed-Grading\11021-Proposed-Grading-plan.dwg
 User: WAH
 Date: 10/04/12
 Scale: 1"=50'
 Plot Date: 12/13/2012



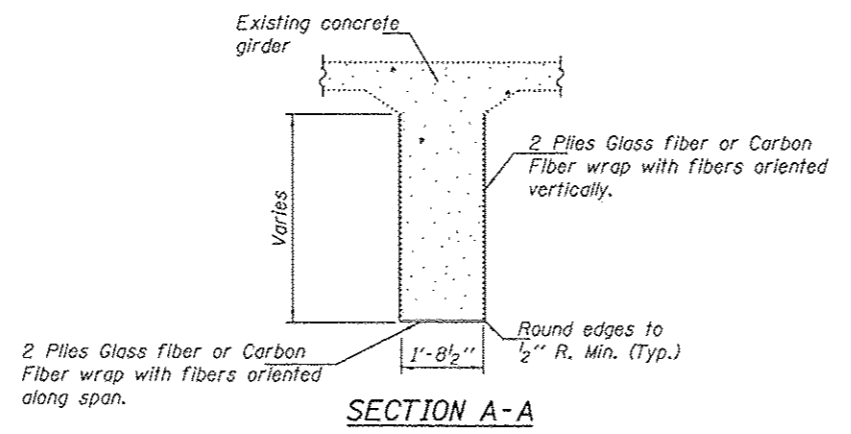
△ REVISED SHEET 6-4-13

	USER NAME - WAH	DESIGNED - CL	REVISED - KJH (10/07) 4/13/13	STATE OF ILLINOIS DEPARTMENT OF TRANSPORTATION	PROPOSED GRADING PLAN IL 116 OVER TEN MILE CREEK	F.A.P. RTE. 673	SECTION 1102B-118R	COUNTY TAZEWELL	TOTAL SHEETS 89	SHEET NO. 1 OF 1	SHEETS STA. TO STA.	CONTRACT NO. 68671
	PLOT SCALE - 1"=50' PLOT DATE - 12/13/2012	DRAWN - WAH CHECKED - KJC/HTL DATE - 10/04/12	REVISED - REVISED - REVISED -			SCALE: 1"=50' SHEET NO. 1 OF 1 SHEETS STA. TO STA.	ILLINOIS FED. AID PROJECT					

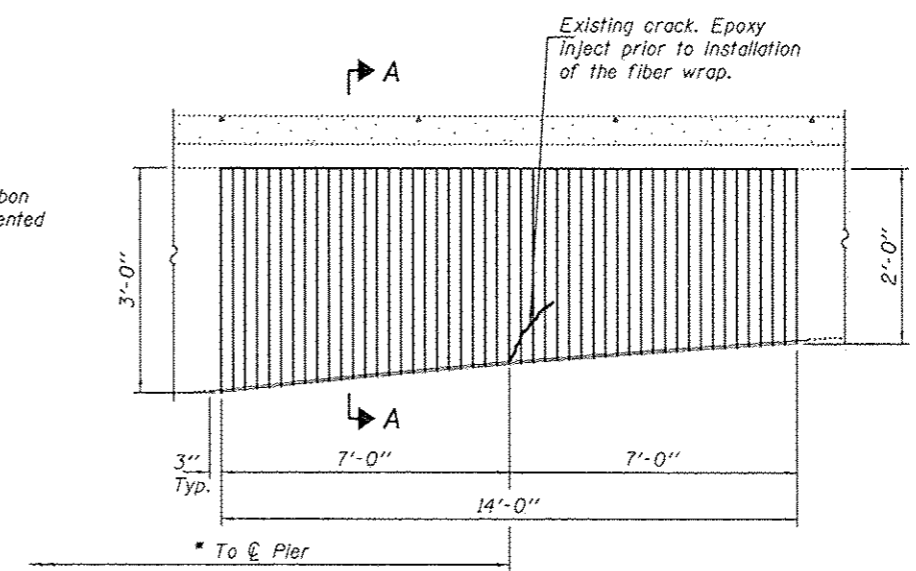


PLAN

(A) - Area of Fiber wrap repair.



SECTION A-A



CONCRETE GIRDER ELEVATION

FIBER WRAP REPAIR DETAILS

TOTAL BILL OF MATERIAL

ITEM	UNIT	QUANTITY
Fiber Wrap	Sq. Ft.	322
Epoxy Crack Injection	Foot	20



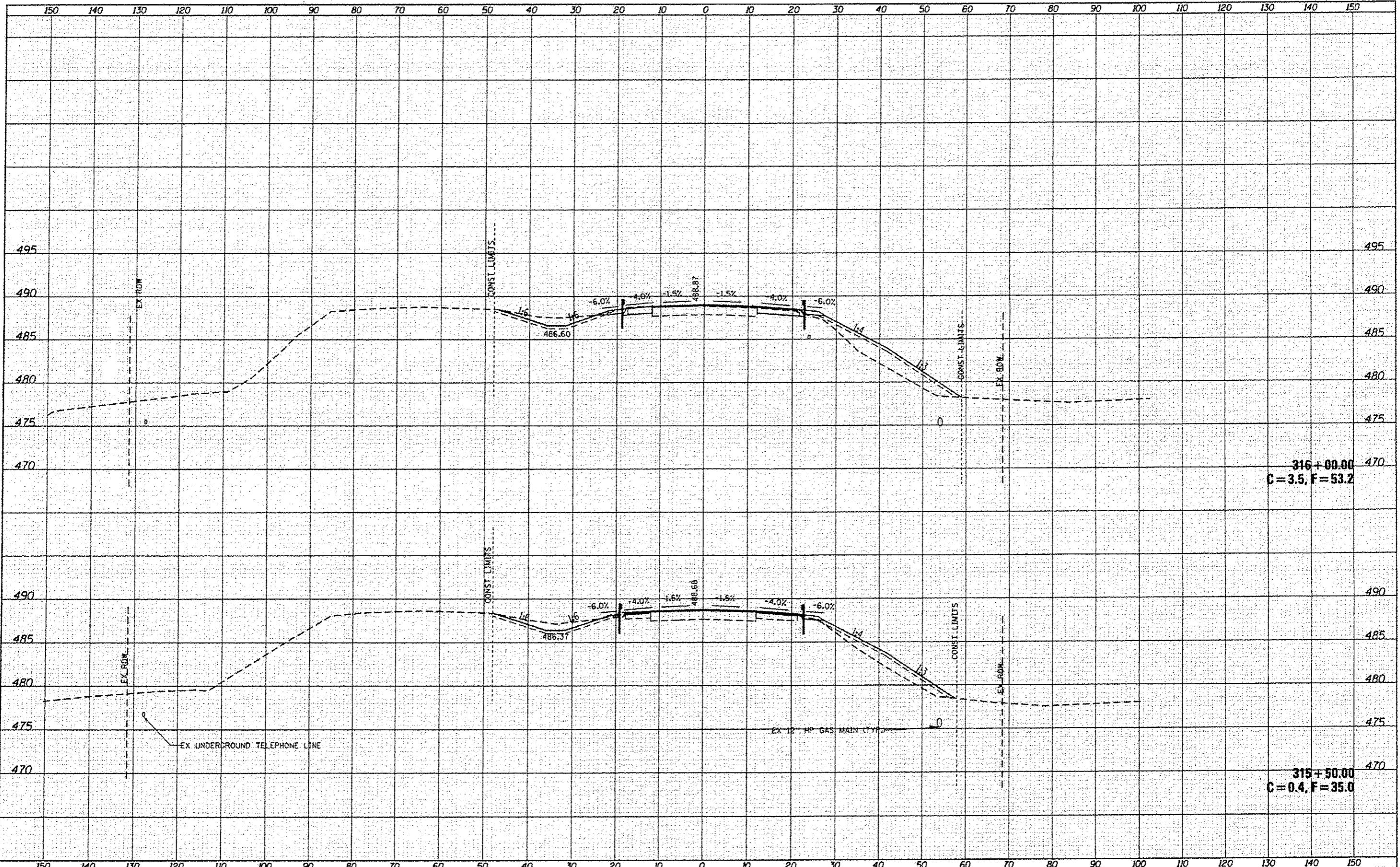
EXPIRES 11-30-2014

⚠ SHEET ADDED 6-4-13

DESIGNED: <i>Victor Velazquez</i>	EXAMINED: <i>Timothy A. Adark</i>	DATE: MAY 24, 2013	STATE OF ILLINOIS DEPARTMENT OF TRANSPORTATION	PRE STAGE I CONSTRUCTION F.A.P. RT. 673 (NB IL 116) OVER TEN MILE CREEK SN 090-0065	F.A.P. RTE. 673	SECTION 1208-11BR	COUNTY TAZEWELL	TOTAL SHEETS 89	SHEET NO. 43A
CHECKED: <i>John Bal</i>	PASSED: <i>Carl Krueger</i>	SHEET ADDED: 5/24/2013 VHV			CONTRACT NO. 68671				
DRAWN: <i>boliva</i>		REVISED:			ILLINOIS FED. AID PROJECT				
CHECKED: <i>PHV JAP</i>					SHEET NO. 1 OF 1 SHEETS				

DATE	
BY	
FINAL CHECKED	
SUPRENT	
PLOTTED	
NOTE BOOK	
AREAS CHECKED	
NO.	

DATE	
BY	
ORIGINAL CHECKED	
SUPRENT	
PLOTTED	
NOTE BOOK	
AREAS CHECKED	
NO.	



reet-Phase 118D-ovings@CADD Sheet-810-287871-2015-5311-703-000



USER NAME: WAH	DESIGNED: CL	REVISED: KJM (bot) 4/10/13
DRAWN: WAH	CHECKED: XJC/HTL	REVISED: REVISED SHEET
DATE: -10/04/12		REVISED: C-4-13

STATE OF ILLINOIS
DEPARTMENT OF TRANSPORTATION

ROADWAY CROSS SECTIONS		F.A.P. RTE.	SECTION	COUNTY	TOTAL SHEETS	SHEET NO.
IL 116 OVER TEN MILE CREEK		673	(102B-1)BR	TAZEWELL	89	83
SCALE:		SHEET NO. 3 OF 5 SHEETS		STA. 315+50.00 TO STA. 316+00.00		CONTRACT NO. 68671
		FED. ROAD DIST. NO.		ILLINOIS FED. AID PROJECT		

