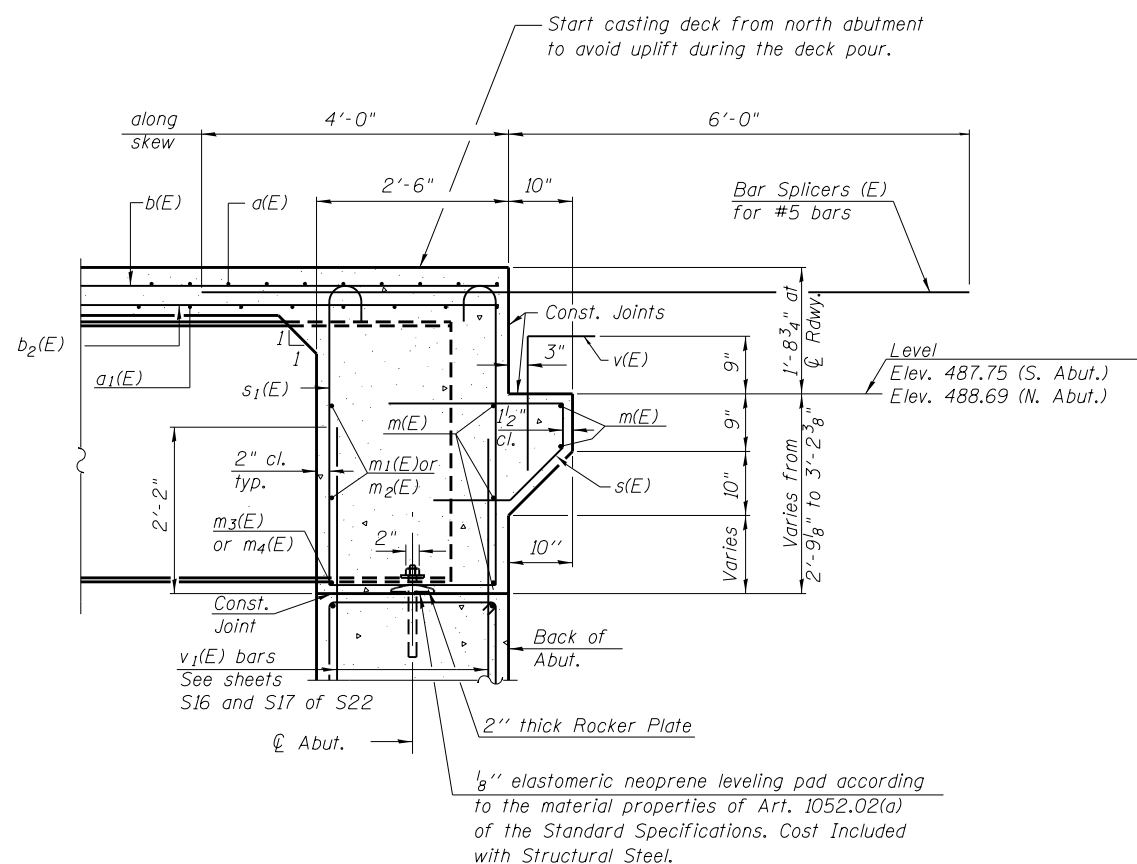


DIAPHRAGM ELEVATION AT ABUTMENT
 (North Diaphragm shown, looking North, South diaphragm similar)

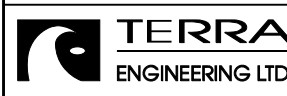
Notes:
 Reinforcement bars in diaphragm are billed with superstructure on sheet S09 of S22.
 Concrete in diaphragm is included with Concrete Superstructure on sheet S09 of S22.
 For details of bars s(E) & s1(E) see sheet S09 of S22.
 The s(E) and s1(E) bars shall be placed parallel to the beams. Spacing for these bars shall be at right angles to the beams.

MIN. BAR LAP
 #6 bar = 3'-4"



SECTION A-A
 Dimensions at right angles to abutment, except as shown.

T:\Projects\10-221\1001-102B-edges_Ten Mile Creek-Phase II\Drawings\Structural\Final Plans\SHEETS\010-Diaphragm.dgn



USER NAME = WAH	DESIGNED - OY	REVISED -
FILE NAME = D468671-010-Diaphragm.dgn	CHECKED - DB	REVISED -
PLOT DATE = 10/5/2012	DRAWN - CM	REVISED -
	CHECKED - JB	REVISED -

STATE OF ILLINOIS
 DEPARTMENT OF TRANSPORTATION

INTEGRAL ABUTMENT DIAPHRAGM DETAILS
 STRUCTURE NO. 090-0179

SHEET NO. S10 OF S22 SHEETS

F.A.P. RTE.	SECTION	COUNTY	TOTAL SHEETS	SHEET NO.
673	(102B-1) BR	TAZEWELL	89	53
CONTRACT NO. 68671				

ILLINOIS FED. AID PROJECT