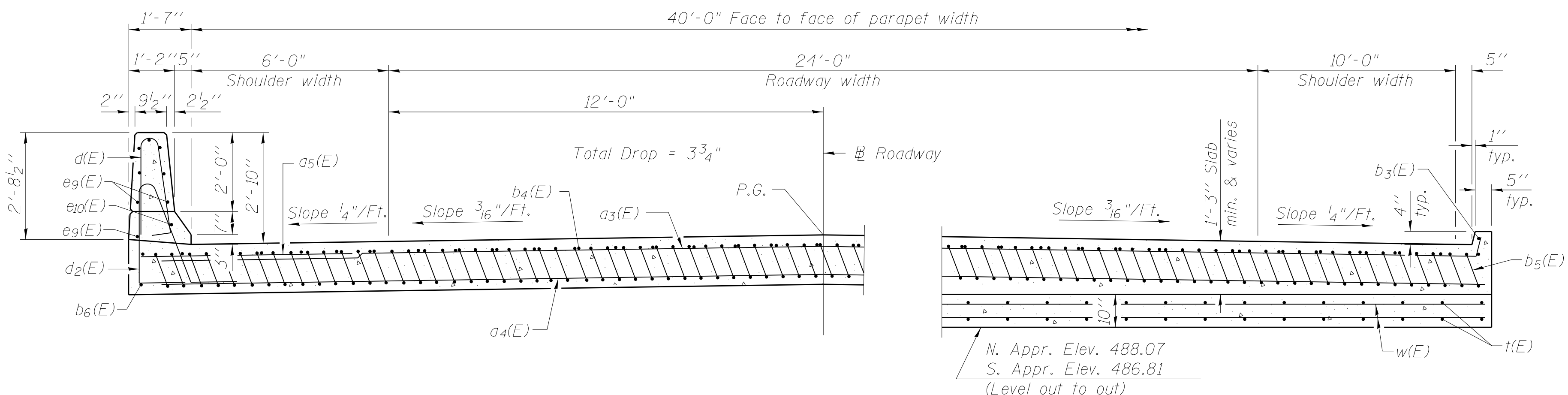


SECTION C-C

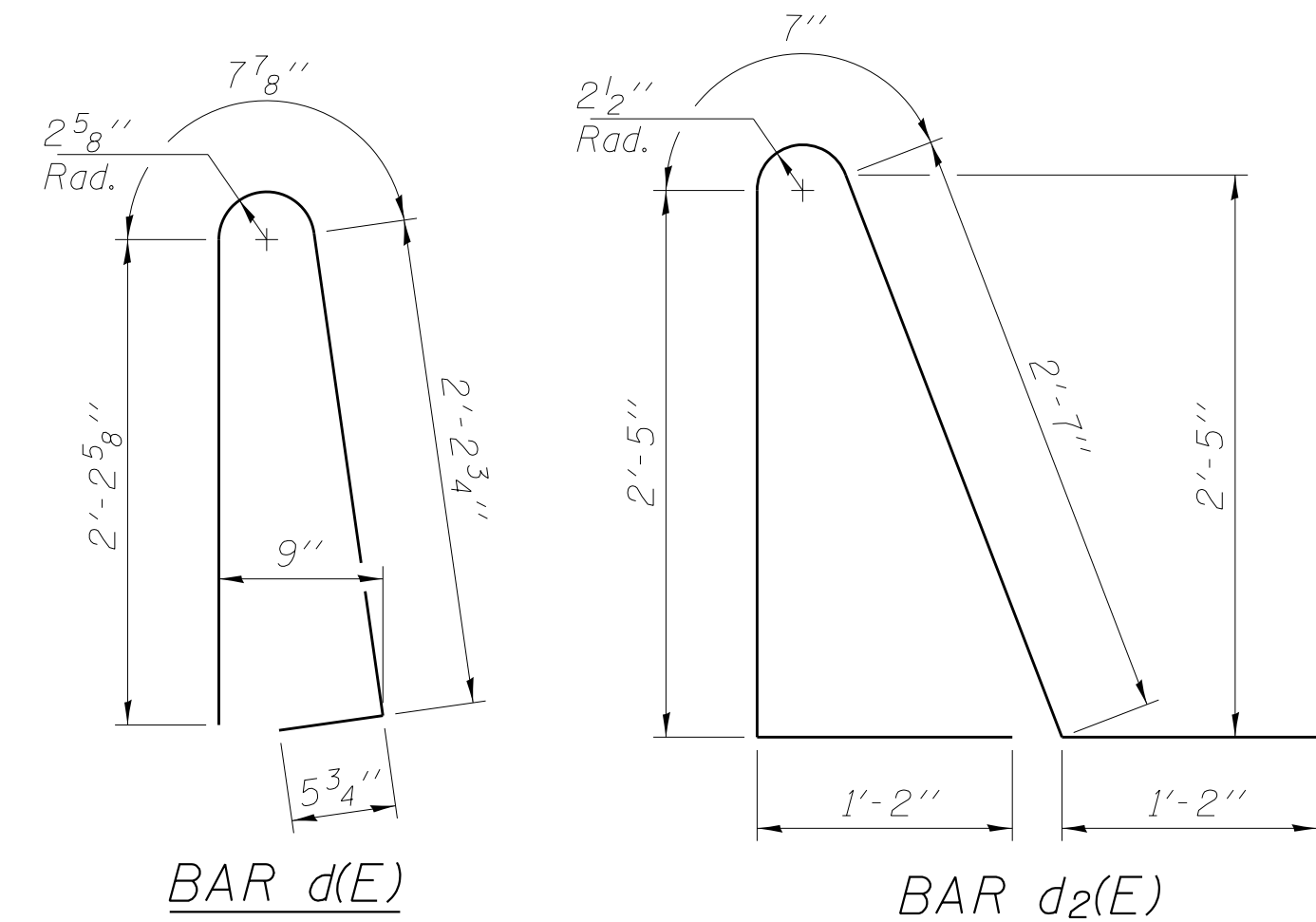


NEAR ABUTMENT

SECTION D-D

(See Plan for dimensions not shown)

AT APPROACH FOOTING

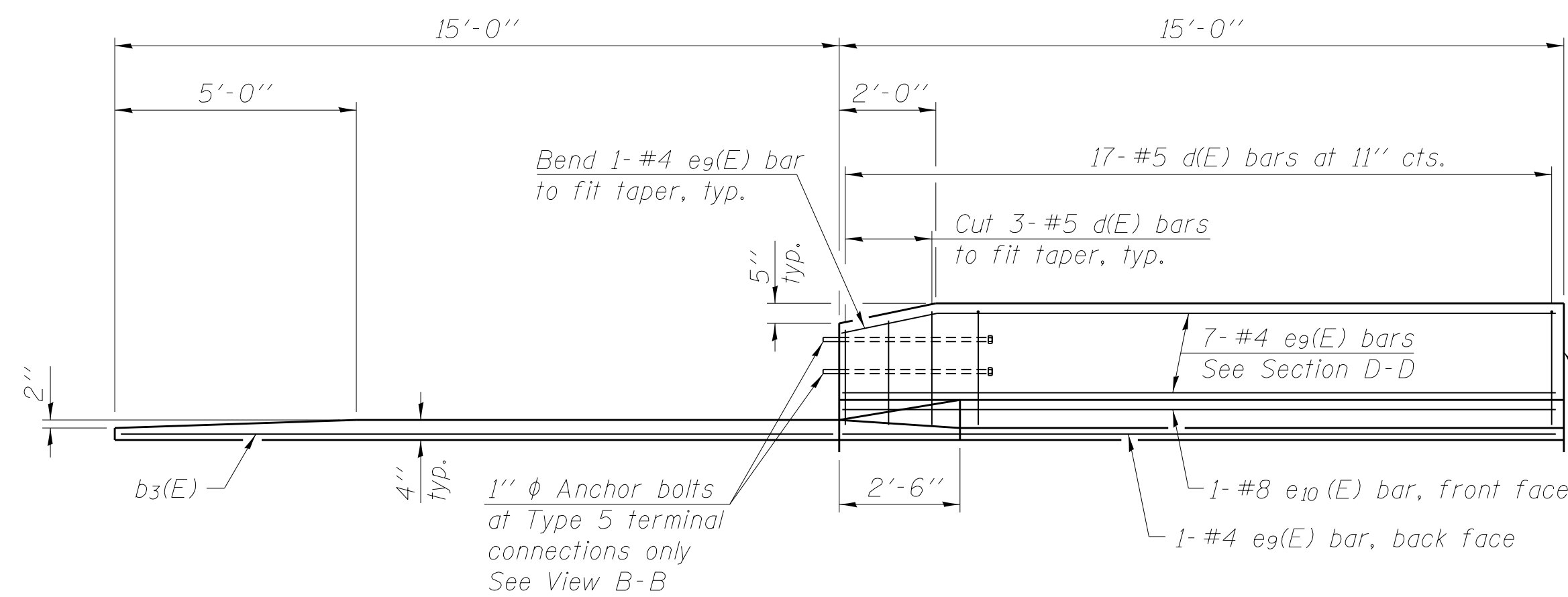


BAR d(E)

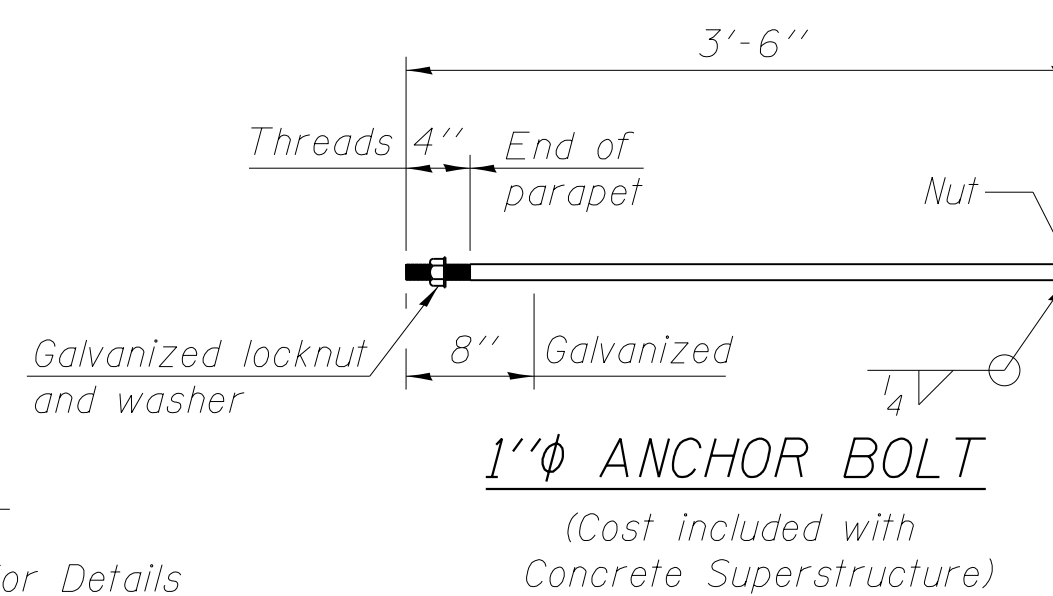
BAR d2(E)

\* Tilt #9 b5(E) bars as required to maintain clearance.

\*\*\* Cost included with Concrete Superstructure.

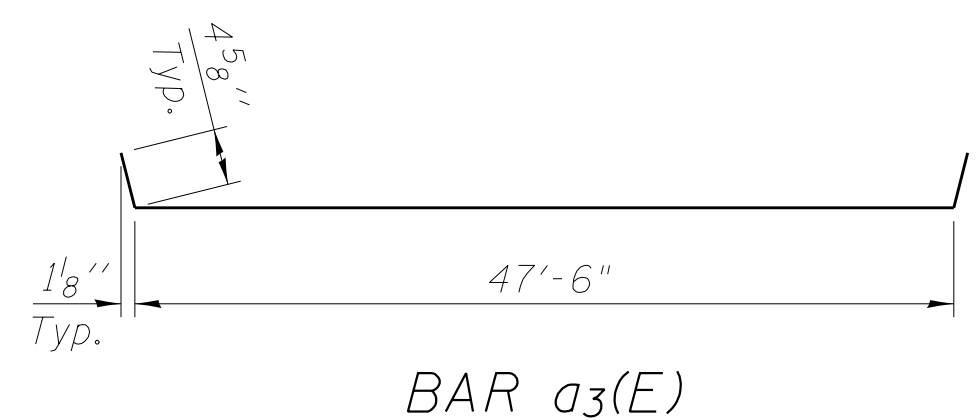


VIEW E-E

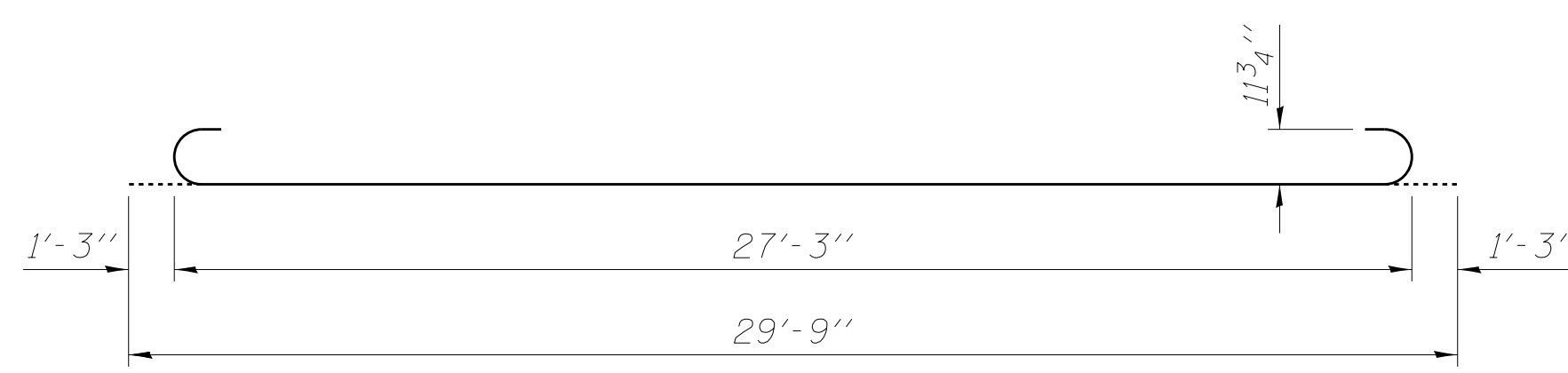


1" ANCHOR BOLT

(Cost included with Concrete Superstructure)



BAR a3(E)



BAR b5(E)

TWO APPROACHES  
BILL OF MATERIAL

Bar	No.	Size	Length	Shape
a3(E)	50	#4	48'-4"	┌───┐
a4(E)	92	#5	48'-0"	┌───┐
a5(E)	48	#6	6'-6"	┌───┐
b3(E)	4	#4	15'-2"	┌───┐
b4(E)	66	#4	29'-8"	┌───┐
b5(E)	200	#9	29'-9"	┌───┐
b6(E)	4	#4	14'-8"	┌───┐
d(E)	68	#5	5'-7"	┌───┐
d2(E)	68	#5	7'-11"	┌───┐
e9(E)	32	#4	14'-8"	┌───┐
e10(E)	4	#8	14'-8"	┌───┐
t(E)	168	#4	11'-3"	┌───┐
w(E)	80	#5	48'-0"	┌───┐
Concrete Superstructure		Cu. Yd.	131.4	
Concrete Structures		Cu. Yd.	29.8	
Reinforcement Bars, Epoxy Coated		Pound	35,010	

(Sheet 2 of 2)