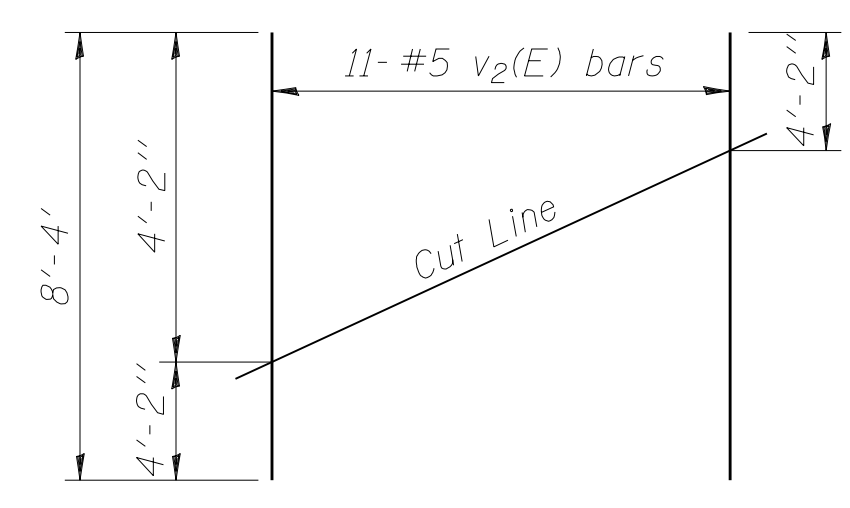


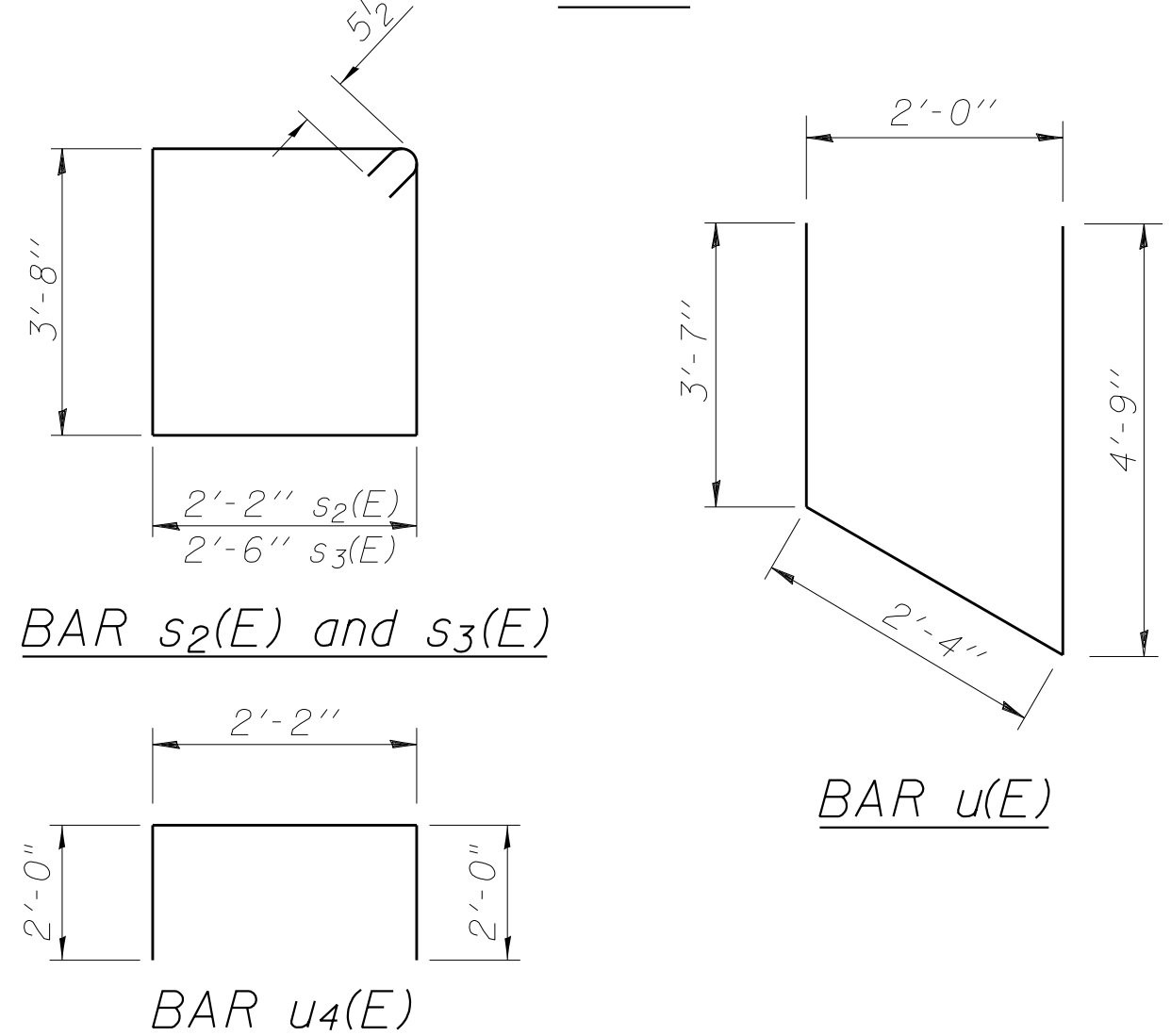
PILE DATA

Type:	Steel HP 14x117
Nominal Required Bearing:	929 Kips
Factored Resistance Available:	465 Kips
Est. Length:	95'
No. Production Piles:	7
No. Test Piles:	1

Notes:
 Pour steps monolithically with cap.
 For details of piles and Concrete Encasement, see sheet S20 of S22.

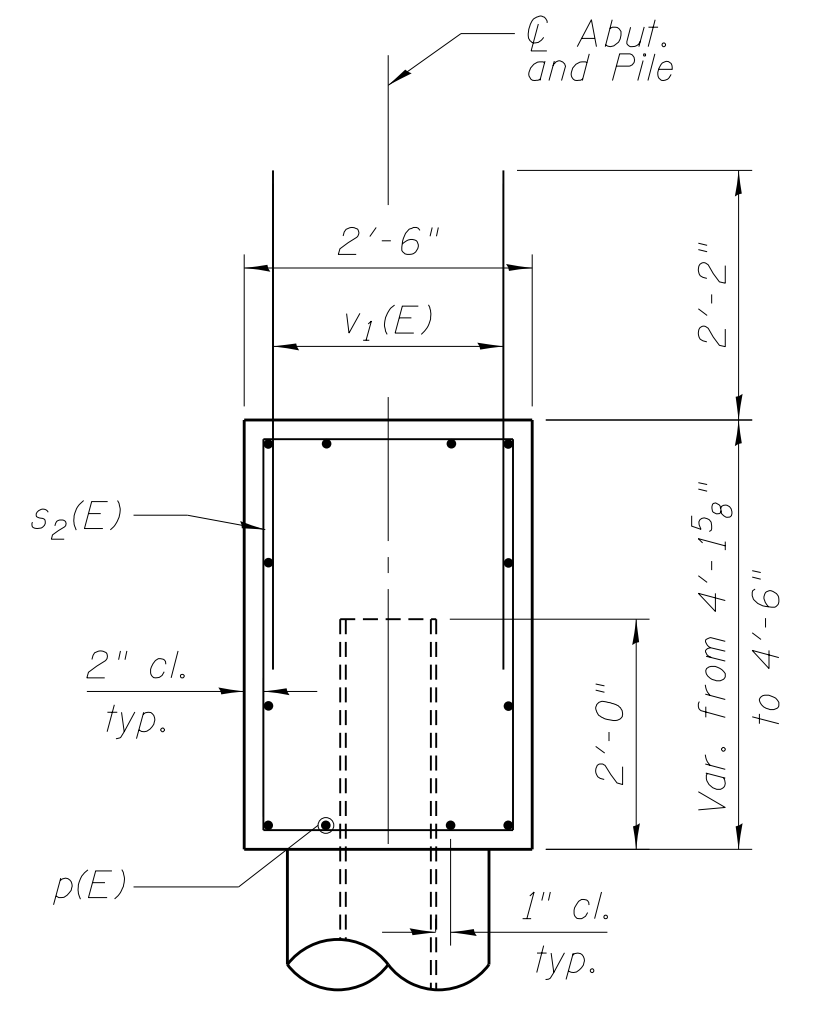


FIELD CUTTING DIAGRAM
 Order v2(E) full length. Cut as shown and use remainder of bars in opposite face.



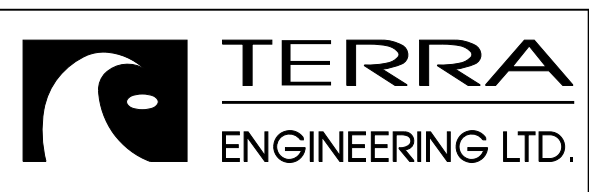
BILL OF MATERIAL

Bar	No.	Size	Length	Shape
h(E)	20	#7	15'-0"	—
h4(E)	30	#5	12'-6"	—
p(E)	12	#7	49'-6"	—
p2(E)	4	#5	17'-0"	—
s2(E)	44	#5	12'-7"	□
s3(E)	2	#5	13'-3"	□
u(E)	8	#6	10'-8"	▤
u4(E)	18	#4	6'-2"	□
v1(E)	102	#5	4'-4"	—
v2(E)	22	#5	8'-4"	—
Structure Excavation		Cu. Yd.	175	
Concrete Structures		Cu. Yd.	25.0	
Concrete Encasement		Cu. Yd.	4.4	
Reinforcement Bars, Epoxy Coated		Pound	3750	
Furnishing Steel Piles, HP 14x117		Foot	665	
Driving Piles		Foot	665	
Test Pile Steel HP 14x117		Each	1	



SECTION B-B
SECTION THRU ABUTMENT

M:\JL RT 116 OVER TEN MILE CREEK\CIVIL\AS\Structural\Final Plans\SHEET S17-Nor th-Abutment.dgn



USER NAME = cvm
 FILE NAME = D468671-017-Nor th-Abutment.dgn
 PLOT DATE = 10/4/2012

DESIGNED - OY
 CHECKED - DB
 DRAWN - CM
 CHECKED - JB

REVISED -
 REVISED -
 REVISED -
 REVISED -

STATE OF ILLINOIS
DEPARTMENT OF TRANSPORTATION

NORTH ABUTMENT PLAN AND ELEVATION
STRUCTURE NO. 090-0179

SHEET NO. S17 OF S22 SHEETS

F.A.P. RTE.	SECTION	COUNTY	TOTAL SHEETS	SHEET NO.
673	(102B-1) BR	TAZEWELL	89	60
CONTRACT NO. 68671			ILLINOIS FED. AID PROJECT	