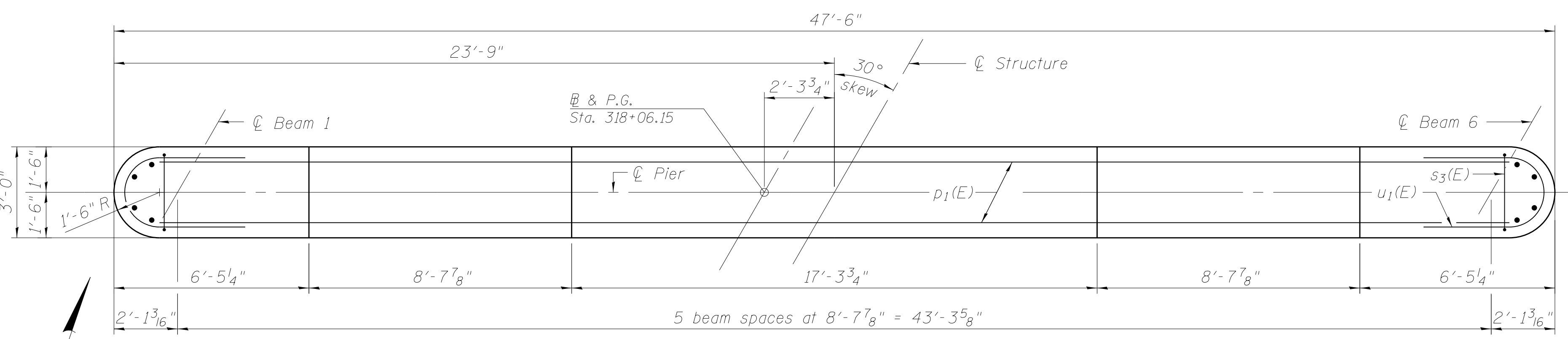
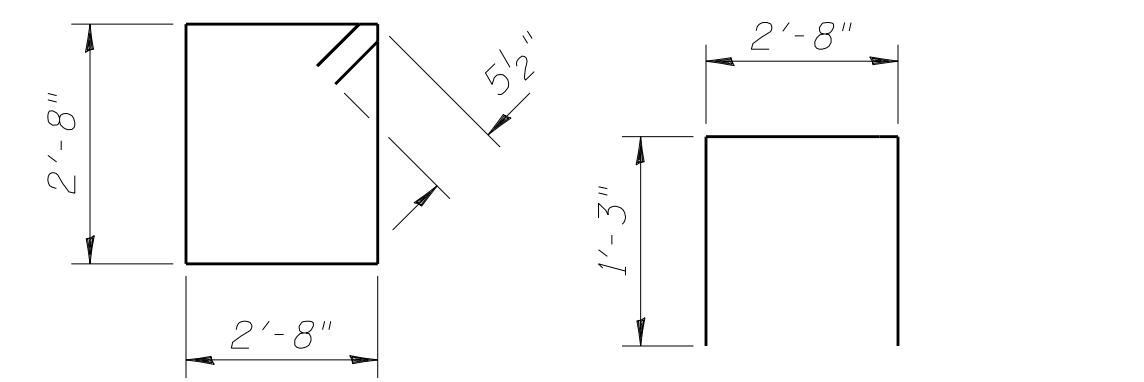


SECTION THRU WALL AT PILE LOCATION

Alternate placement of 90° hooked end of s5(E) tie bars between vertical layers of tie bars.

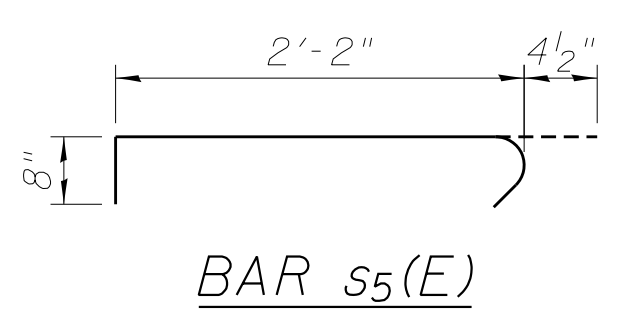


TOP PLAN

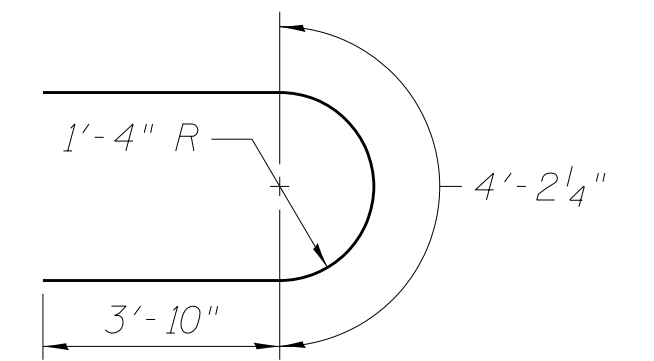


BAR s3(E)

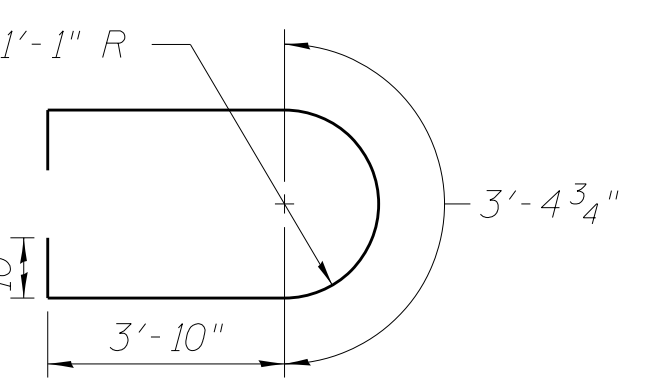
BAR s4(E)



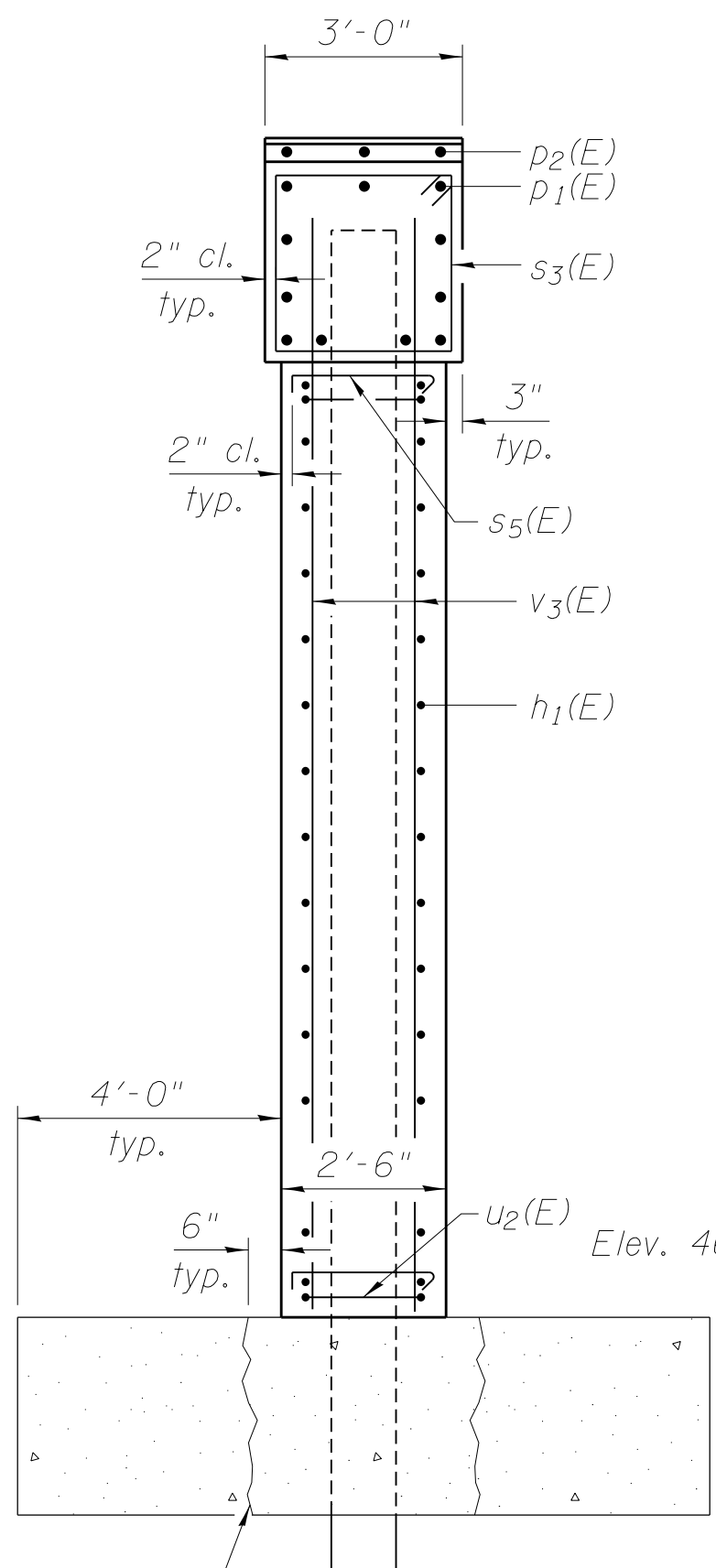
BAR s5(E)



BAR u1(E)



BAR u2(E)

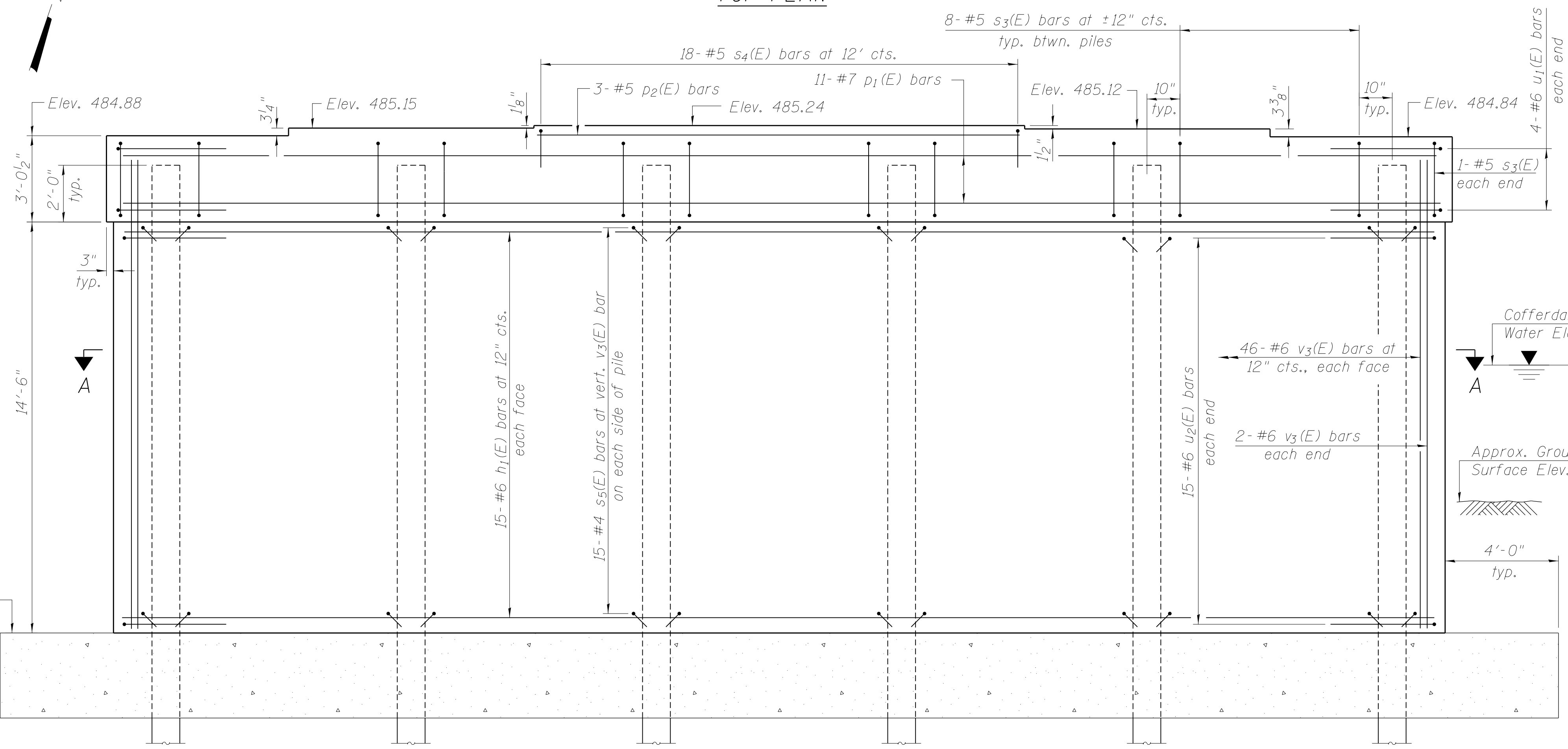


END VIEW

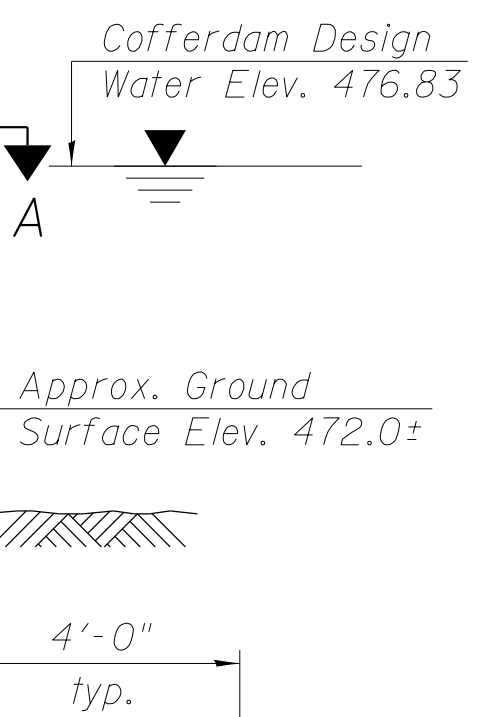
Contractor shall fracture seal coat (full depth) approximately 6" from each side of stem wall prior to backfilling. Care shall be taken to avoid damage to new construction. Cost included with Cofferdam (Type 2).

PILE DATA

Type: HP 14x117
 Nominal Required Bearing: 929 k
 Factored Resistance Available: 511 k
 Est. Length: 93'
 No. Production Piles: 5
 No. Test Piles: 1

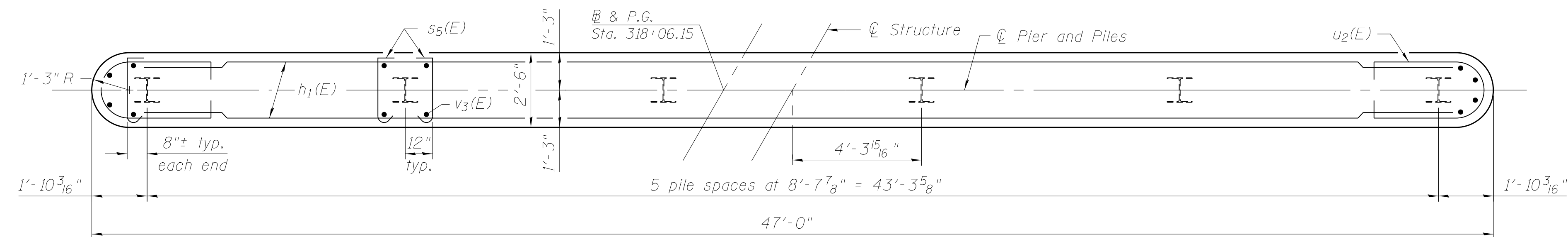


ELEVATION (Looking North)



BILL OF MATERIAL

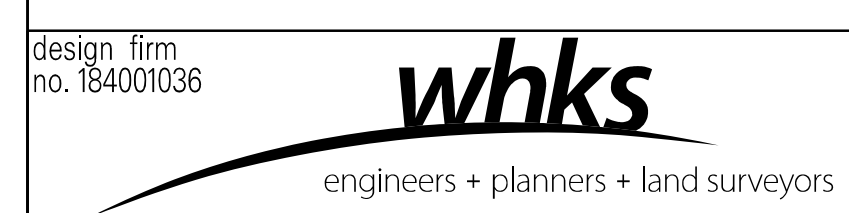
Bar	No.	Size	Length	Shape
h1(E)	30	#6	44'-6"	—
p1(E)	11	#7	44'-6"	—
p2(E)	3	#5	17'-0"	—
s3(E)	42	#5	11'-7"	□
s4(E)	18	#5	5'-2"	□
s5(E)	180	#4	3'-3"	L
u1(E)	8	#6	11'-11"	U
u2(E)	30	#6	12'-9"	U
v3(E)	96	#6	16'-6"	—
Cofferdam Excavation		Cu. Yd.	164	
Cofferdam (Type 2)		Each	1	
Concrete Structures		Cu. Yd.	79.3	
Seal Coat Concrete		Cu. Yd.	64.2	
Reinforcement Bars, Epoxy Coated		Pound	7,160	
Furnishing Steel Piles HP 14x117		Foot	465	
Driving Piles		Foot	465	
Test Pile Steel HP 14x117		Each	1	



SECTION A-A

Notes:

Pour steps monolithically with cap.
 For pile details, see sheet S20 of S22.
 Space reinforcement in cap to miss anchor bolts. See sheet S14 of S22 for anchor bolt details.
 Seal coat thickness design is based on the Cofferdam Design Water Elevation (CDWE). Cofferdam design details and proposed changes in seal coat thickness shall be submitted to the Engineer for approval with the cofferdam design.



USER NAME = *OPERATOR*	DESIGNED - RJN	REVISED
FILE NAME = 090-0179-0468671.dgn	CHECKED - CWC	REVISED
PLOT SCALE = 0:1" = 1'-0"	DRAWN - DLH	REVISED
PLOT DATE = 4/30/2013	CHECKED - CWC	REVISED

STATE OF ILLINOIS DEPARTMENT OF TRANSPORTATION

PIER STRUCTURE NO. 090-0179

SHEET NO. S18 OF S22 SHEETS

F.A.P. RTE.	SECTION	COUNTY	TOTAL SHEETS	SHEET NO.
673	(102B-1)BR	TAZEWELL	89	61
CONTRACT NO. 68671				
ILLINOIS FED. AID PROJECT				